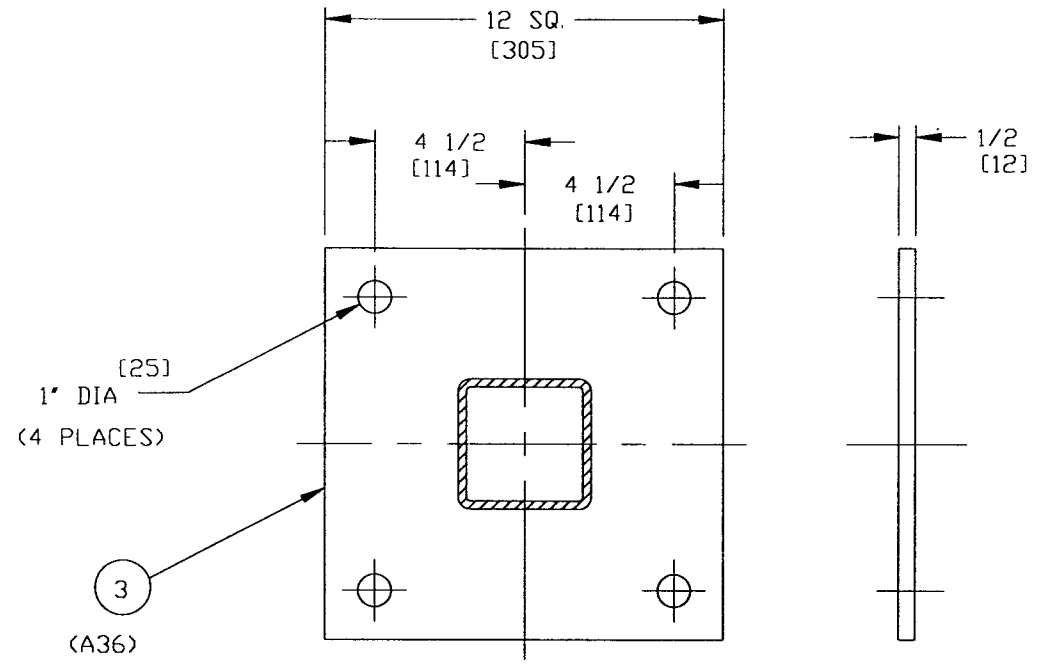
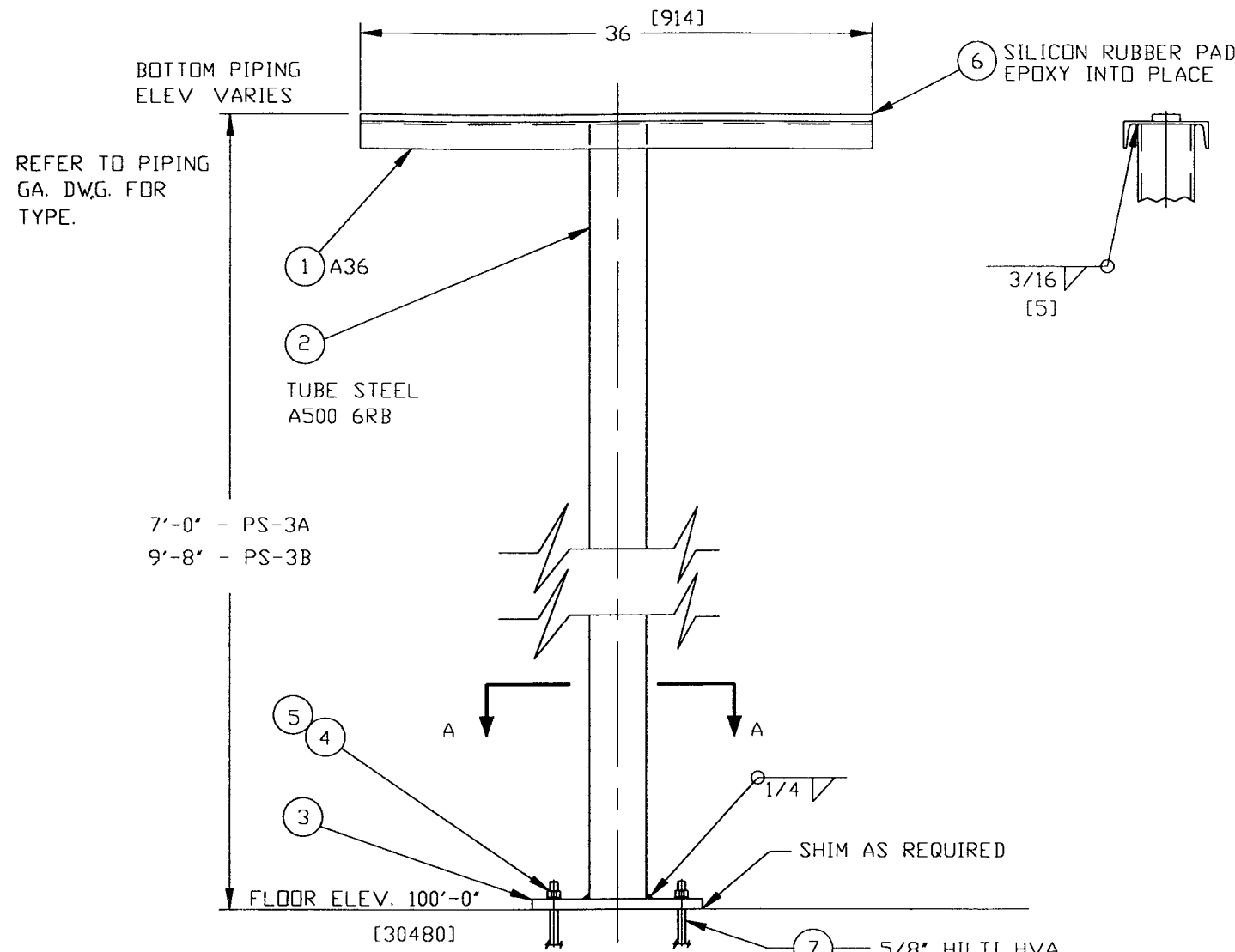


ITEM	PART NO.	SUFFIX	QTY	UM	DESCRIPTION
1			1	EA	CHANNEL, C6x8.23#/FT.x3 FT. A36
2			2	EA	TUBE, SQ, 1/4"x4"x20 FT. LG. A500 GRB
3			4	EA	PLATE, 1/4"x12"x12"
4			4	EA	BOLT 5/8"x3" LG. C.S. NICKEL PLT.
5			4	EA	WASHER, FLAT, 3/4" ID
6			3	FT	SILICON PAD 1/2" X 2" X 3 FT LG.
7			4	EA	ANCHOR HILTI HVA 5/8"x 5" LG.



SCALE: 1 1/2" = 1'-0"

SECTION A-A
SCALE: 1/4"

NOTE:
1. PAINT PER PSI SPEC V049-2-139.



0961135-01-V

PROPRIETARY AND CONFIDENTIAL
THIS DOCUMENT CONTAINS PROPRIETARY INFORMATION BELONGING TO PROCESS SYSTEMS INTERNATIONAL, INC. OR ITS COMPANIES AND SHALL BE USED FOR THE PURPOSE FOR WHICH SUPPLIED. IT SHALL NOT BE REPRODUCED OR OTHERWISE USED, IN WHOLE OR IN PART, WITHOUT THE WRITTEN CONSENT OF PROCESS SYSTEMS INTERNATIONAL, INC. AND SHALL BE RETURNED UPON REQUEST.

DWG. NO.	DESCRIPTION	REV.	DESCRIPTION	CHKD	DRAWN	DATE	DEO
		1	ISSUED FOR RELEASE/FDR UPDATE	RDC	DMV	12/27/96	0360
		0	ISSUED FOR FDR/BIDS	RDC	REC	4/29/96	0150

PROCESS SYSTEMS INTERNATIONAL, INC. 20 WALKUP DR. WESTBOROUGH, MASSACHUSETTS 01581 USA			
PS-3 'T'-POST SUPPORT MECH ROOM PIPING LIGO VACUUM EQUIPMENT			
CAD FILE V0494074	SIZE C	DWG. NO. V049-4-074	REV 1
SCALE AS NOTED		SHEET 1 OF 1	

Dec 27, 1996 - 14:19:08