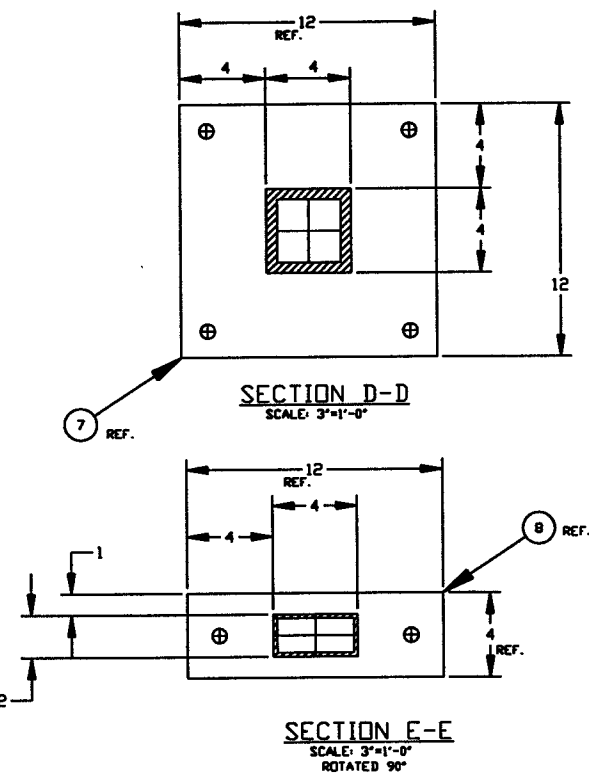
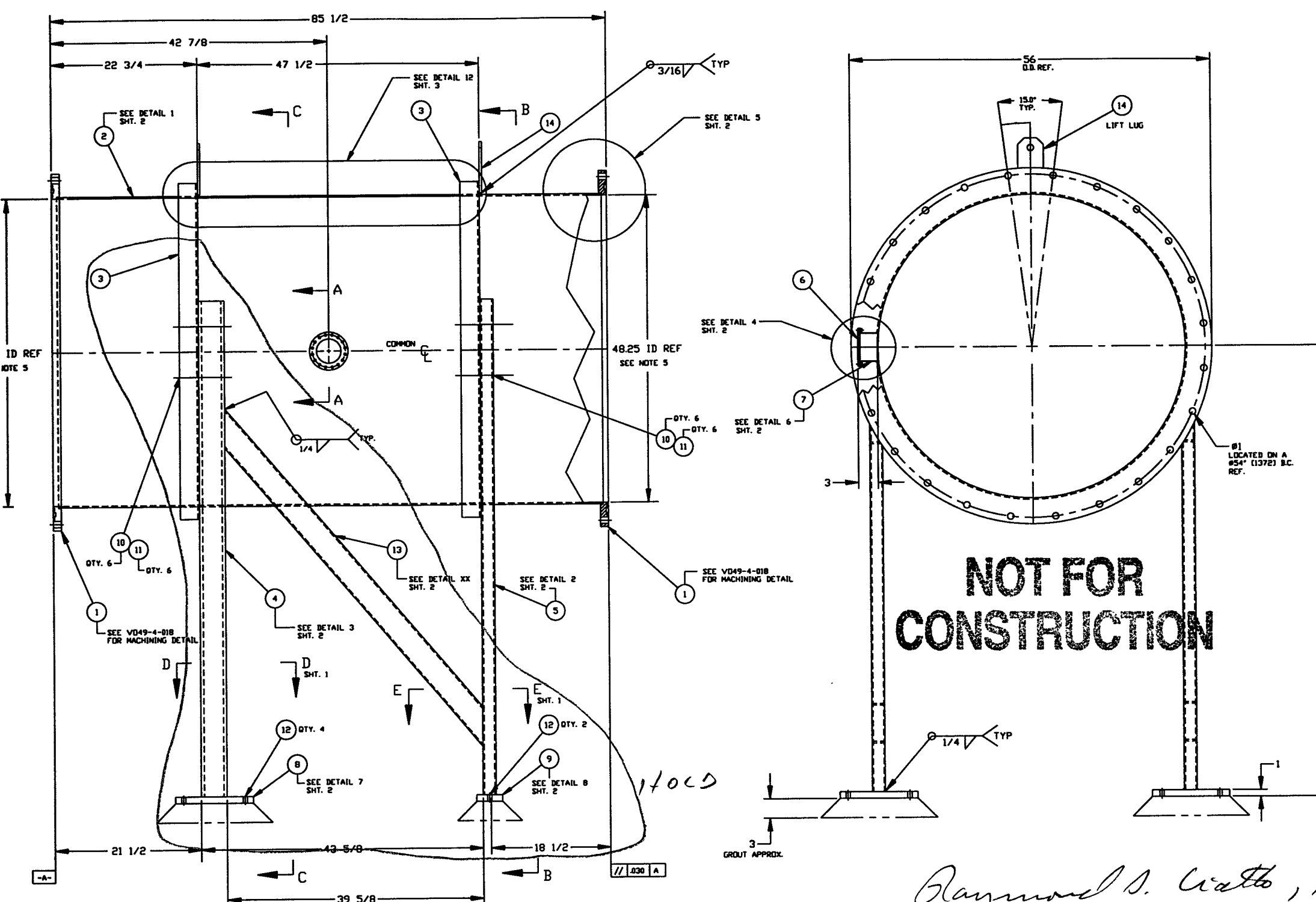


ITEM	PART NUMBER	SUFFIX	QTY	UH	DESCRIPTION
1	V049-4-018		2	EA	FLANGE, GROOVED
2	X		X	SF	PLATE, 304L SST. 1/4" THK.
3	X		X	FT	ANGLE, 304L SST. 4"x3"x1/4"
4	X		X	FT	TUBE STL. (TS) A500 GRB 4"x3"x1/2"
5	X		X	FT	TUBE STL. (TS) 4"x2"x3/16"
6	X		1	EA	FLANGE
7	X		X	SF	PLATE, 304L SST. 11 GA. (1196)
8	X		X	SF	PLATE, 304L SST. 1" THK.
9	X		X	SF	PLATE, 304L SST. 1" THK.
10	X		X	EA	BOLT, 5/8"-11 UNC x
11	X		X	EA	NUT, 5/8"-11 UNC
12	X		X	EA	ANCHOR BOLT, 1" DIA.
13	X		X	FT	TUBE STL. (TS) A500 GRB 4"x2"x3/16"



- NOTES:
- LEAK TEST & METHOD PER PSI SPEC V049-2-014
  - CERTIFIED MANUFACTURER'S MATERIAL TEST REPORTS REQUIRED.
  - BOLT HOLES TO STRADDLE CENTERLINES AS SHOWN +/- .015
  - CLEAN PER SPEC V049-2-015
  - DO NOT USE CARBON STEEL BRUSHES OR BRUSHES CONTAMINATED WITH CARBON STEEL OR STAINLESS OR ALUMINUM MATERIAL.
  - THE CENTER LINES OF ALL SHELLS AND FLANGES ARE TO LIE ON THE COMMON CENTER LINE WITHIN +/- 1/16.
  - SPOOL FABRICATION TO BE IN ACCORDANCE WITH SPEC. V049-2-097.
  - FOR FLANGE DETAILS SEE DWG. V049-4-018
  - THESE FLANGES EACH INCLUDE AN ANGULAR CHANNEL BETWEEN O-RINGS, MANIFOLD TO A SINGLE PUMPOUT PORT ON EACH CHAMBER. SEE DWG V049-4-
  - REGISTERED TRADEMARK, VARIAN VACUUM PRODUCTS; COMPATIBLE ALTERNATIVES ARE ACCEPTABLE.

*Raymond S. Watts, P.E.*  
5/7/96

DWG. NO.	DESCRIPTION	REF. DRAWINGS	DWG. NO.	DESCRIPTION

UNLESS OTHERWISE SPECIFIED DIMENSIONS ARE IN INCHES									
TOLERANCES:									
FUNCTIONAL: .01									
FINISH: .0015									
DO NOT SCALE THIS DRAWING									
USED ON:									
NEXT ASS'Y:									

ISSUED FOR	DATE	BY	CHKD	DRWN	DATE	DECR
ISSUED FOR FDR	4/29/96	DA				
PRELIMINARY	3/19/96	MAA				

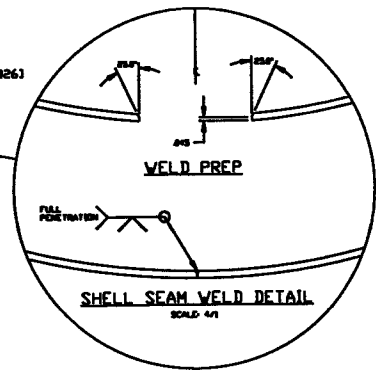
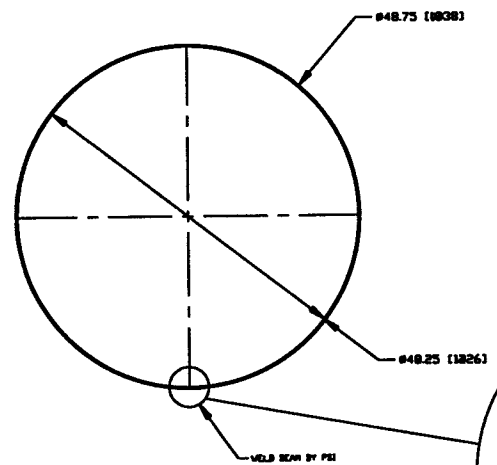
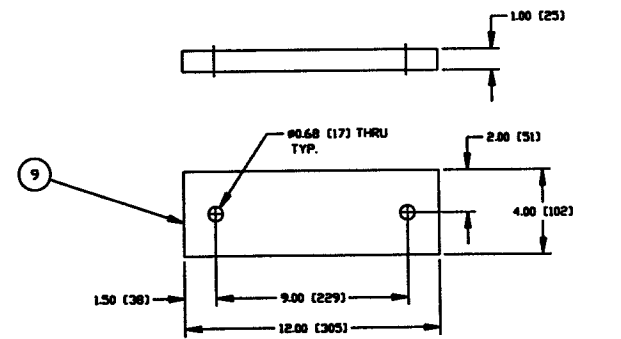
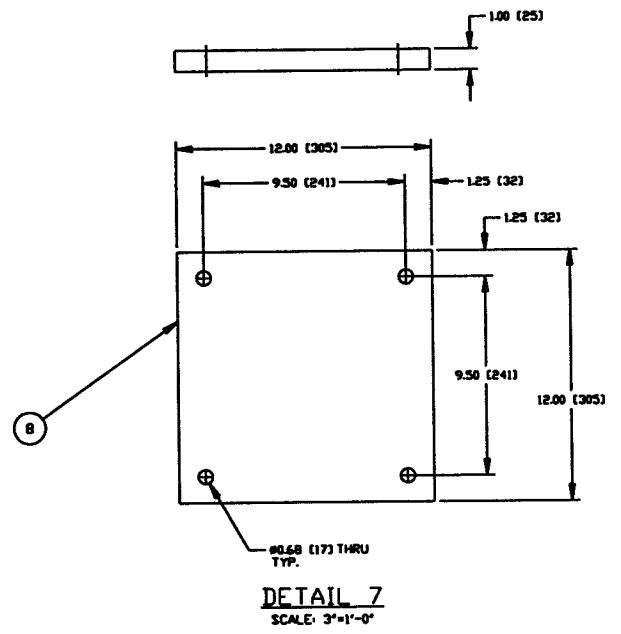
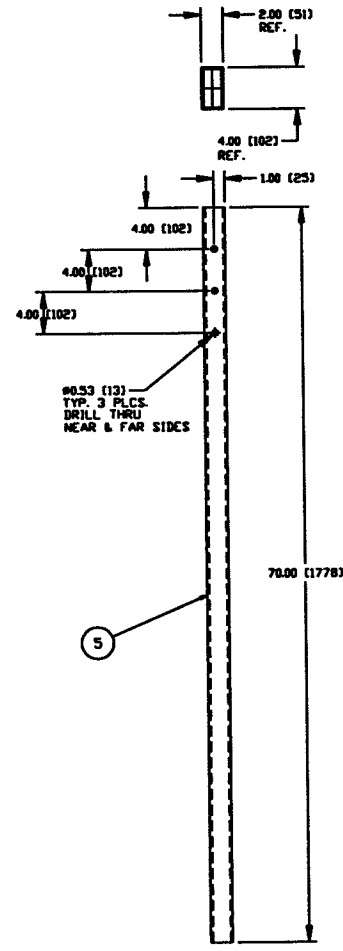
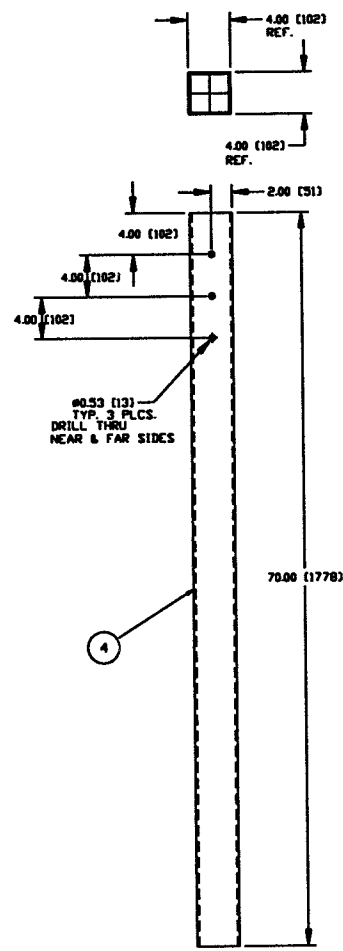
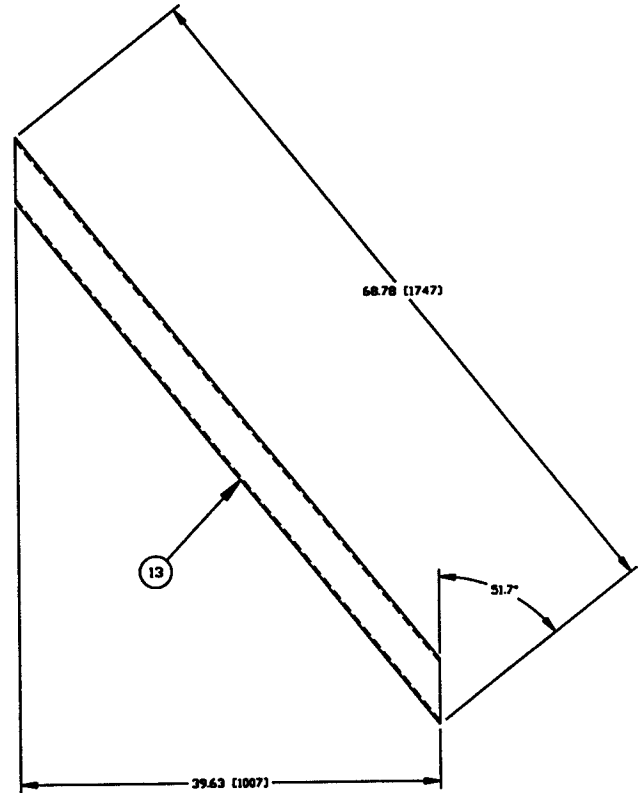
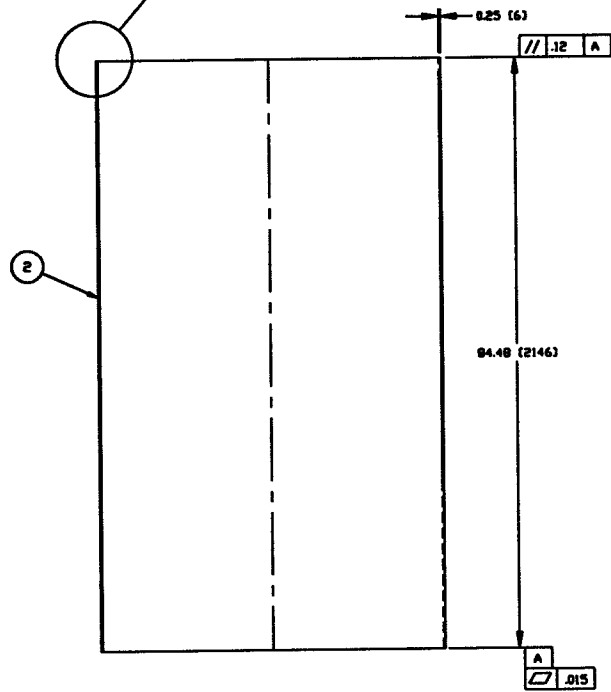
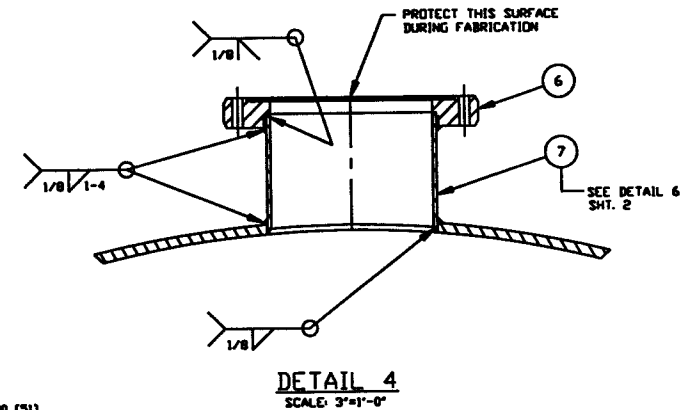
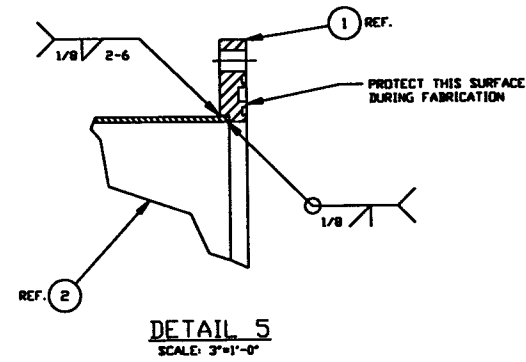
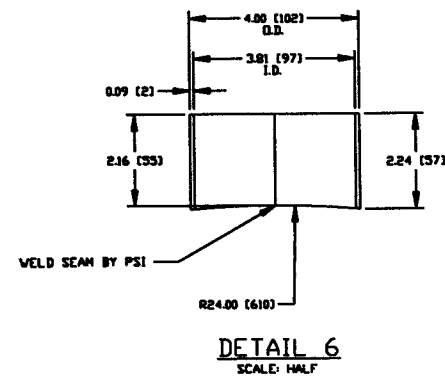
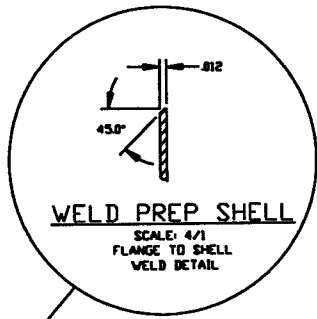
  

CAB FILE	SIZE	DWG. NO.	REV.
48651	D	V049-4-86	0

SCALE	SHEET
AS NOTED	1 OF 3

MAY 07, 1996 - 143608



**NOT FOR CONSTRUCTION**

*Raymond D. Liath, P.E.*  
5/7/96

*Hold*

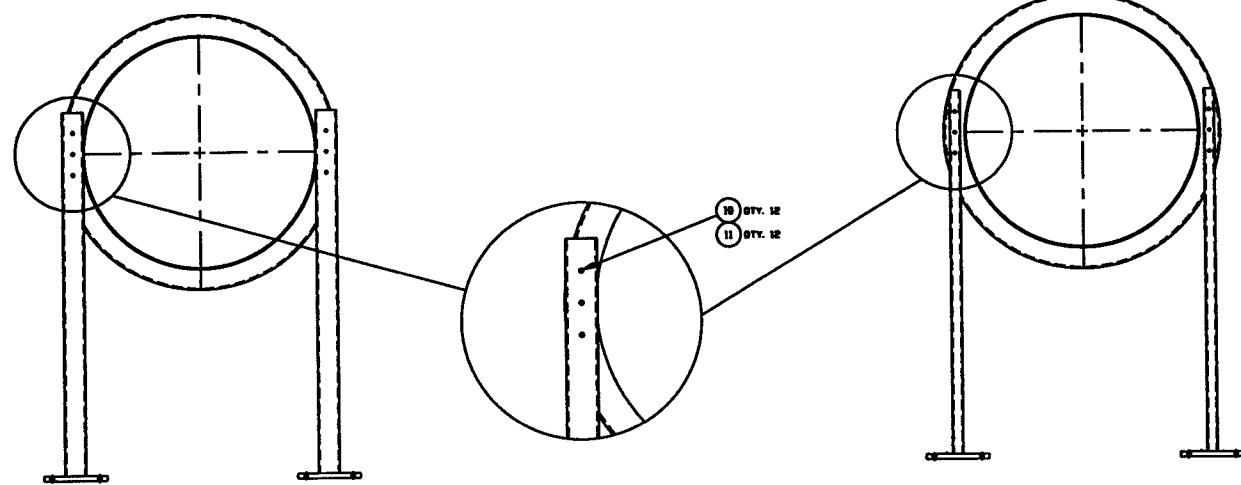
LIGO D961156-00-V

PROCESS SYSTEMS INTERNATIONAL, INC.  
A DIVISION OF GENERAL ELECTRIC

SPOOL B-6  
48.50" ID  
LIGO VACUUM EQUIPMENT

CAD FILE NAME	SIZE D	DWG. NO. V049-4-B6	REV. D
SCALE AS NOTED	SHEET 2 OF 3		

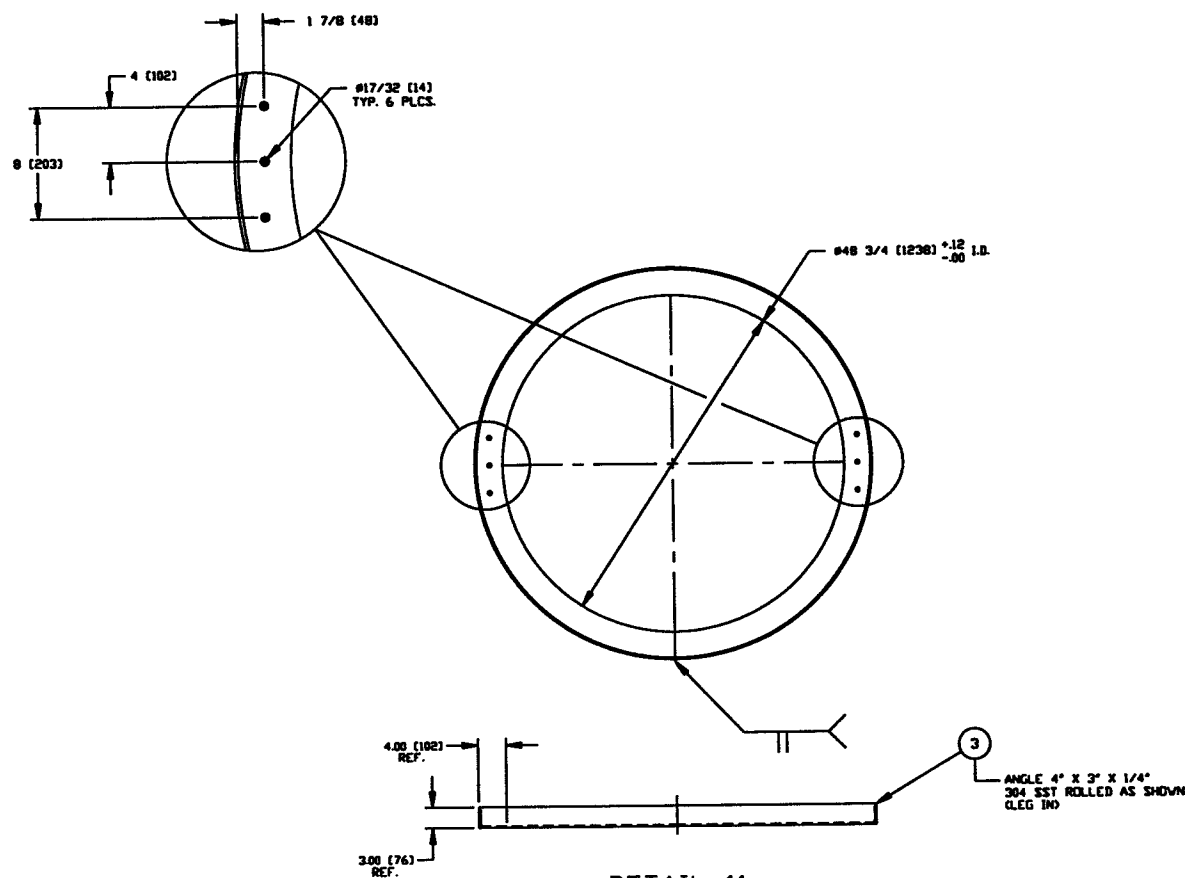
May 07, 1996 - 144213



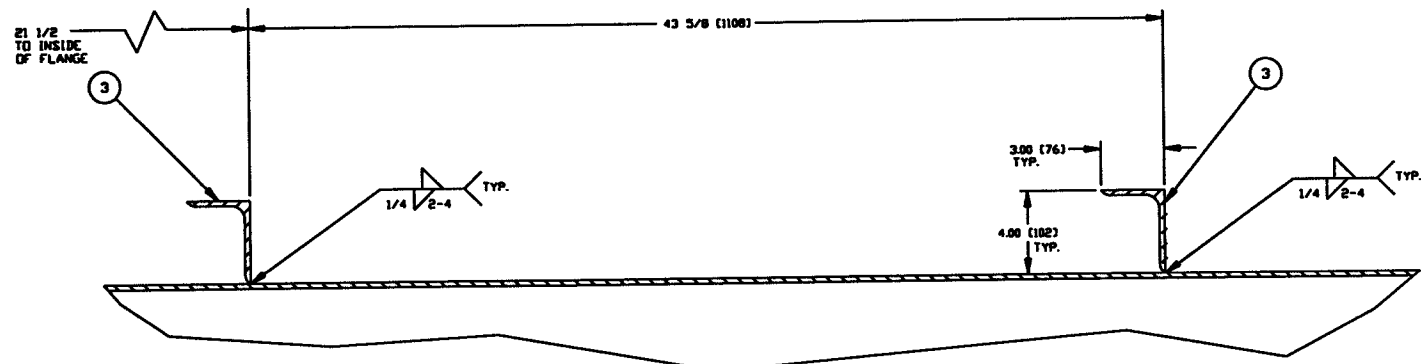
SECTION C-C  
SCALE: 3/4"=1'-0"

DETAIL 10  
SCALE: 8X

SECTION B-B  
SCALE: 3/4"=1'-0"



DETAIL 11  
SCALE: 1"=1'-0"



DETAIL 12  
SCALE: 3"=1'-0"

**NOT FOR  
CONSTRUCTION**

*Raymond S. Watts, PE*  
5/7/96

**(HOLD)**

LIG00961156-00-V

SPOOL B-6 48.25" ID LIGO VACUUM EQUIPMENT			
CAD FILE 9-6882	SIZE D	REV. NO. V049-4-B6	REV. D
SCALE AS NOTED	SHEET 3 OF 3		

May 07, 1996 - 144489