

ITEM	PART NUMBER	SUFFIX	QTY	UN	DESCRIPTION
1	V0494064		2	EA	FLANGE, FLAT FACED, 60 1/2" ID x 68 1/4" OD x 1" THK
2			1	EA	PLATE, 304L SST, 1/4" WALL x 61" OD x 42 1/4" LG
3			8	FT	TUBING, RECT, 8" x 6" x 1/2" 304 SST
4			1	EA	BELLOWS ASSY.
5			16	EA	NUT, HEX, A563 GR-A, 1"-8 UNC-2B
6			4	FT	ROD, THREADED, 1"-8 UNC-2A (A36)
7			1	EA	PLATE, 304L SST, 1/4" WALL x 61" OD x 18 5/16" LG
8			16	EA	WASHER, FLAT, 1"
9			4	EA	PLATE, 4"x3 3/4"x3/8" 304 SST
10			2	EA	PLATE, 8"x4"x3/8" 304 SST

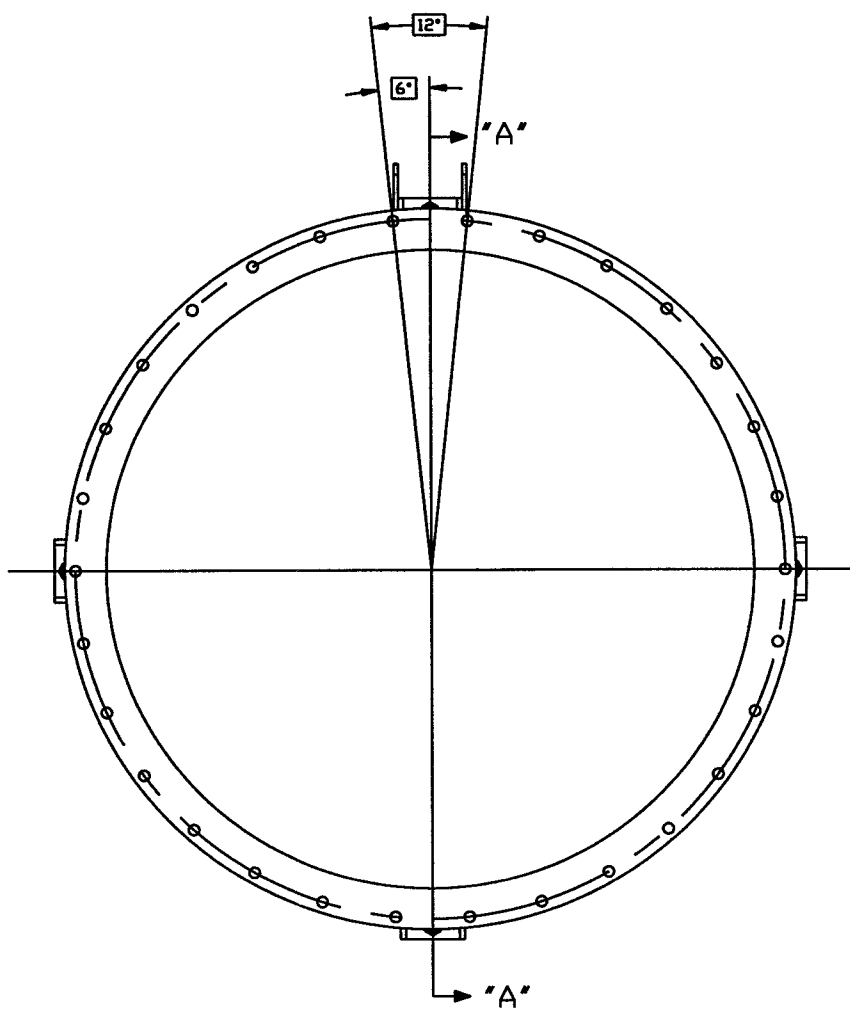
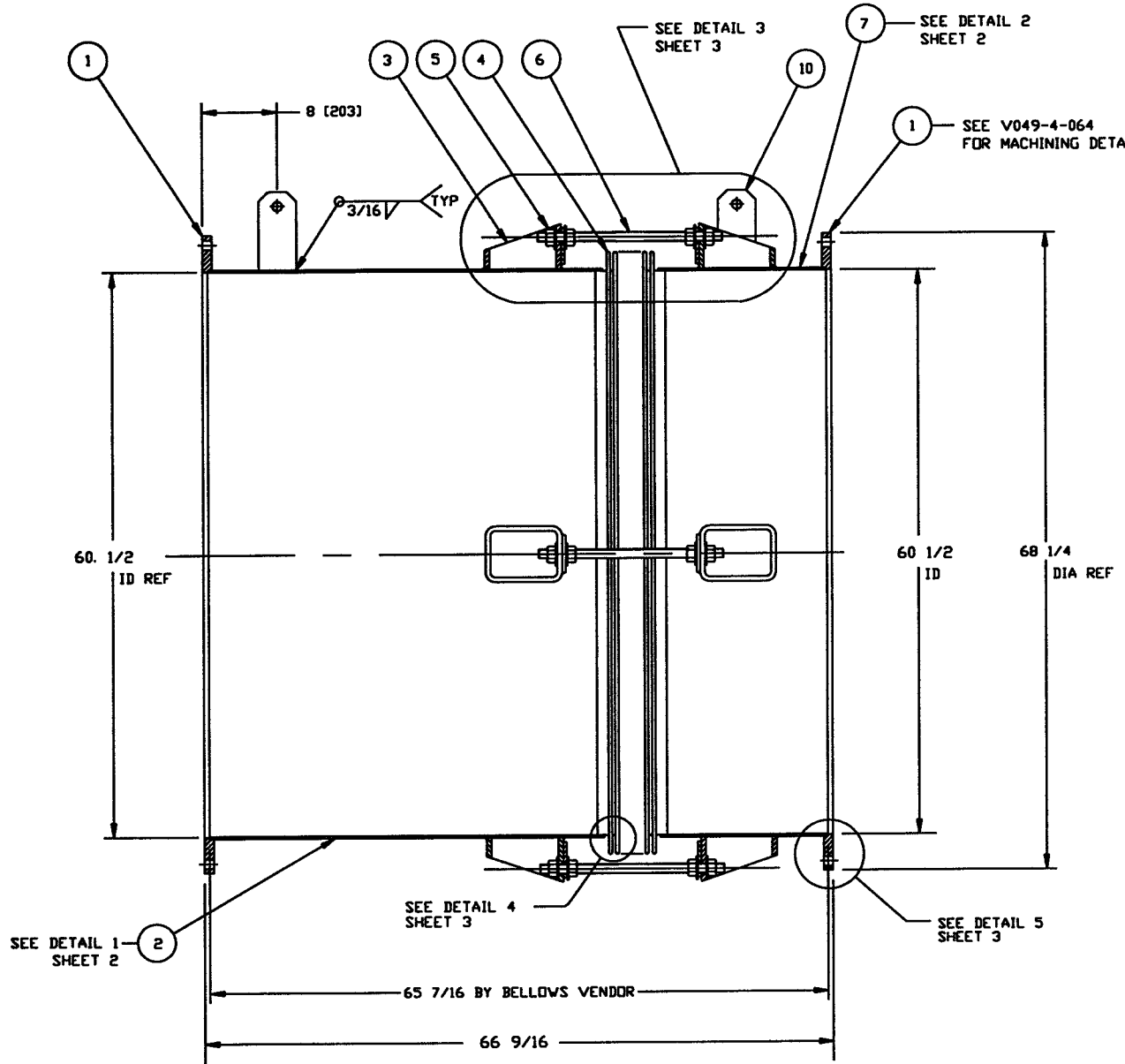
* ELECTROLESS NICKEL PLATE

NOT FOR CONSTRUCTION

- NOTES:
- LEAK TEST & METHOD PER PSI SPEC: V049-2-014
 - CERTIFIED MANUFACTURER'S MATERIAL TEST REPORTS REQUIRED.
 - BOLT HOLES TO STRADDLE NATURAL CENTERLINES AS SHOWN ± .015.
 - CLEAN PER SPEC: V049-2-015
 - DO NOT USE CARBON STEEL BRUSHES OR BRUSHES CONTAMINATED WITH CARBON STEEL ON STAINLESS OR ALUMINUM MATERIAL.
 - DIMENSIONS SHOWN IN PARENTHESES ARE IN MILLIMETERS.
 - FABRICATION TO BE IN ACCORDANCE WITH SPEC. V049-2-077.
 - FOR FLANGE DETAILS SEE DWG. V049-4-064

Raymond D. Gatto, PE
5/6/95

LIGO 0961160-00-V



SECTION "A"- "A"

ALL CONFIDENTIAL

THIS DRAWING CONTAINS PROPRIETARY INFORMATION BELONGING TO PROCESS SYSTEMS INTERNATIONAL, INC. OR ITS AFFILIATED COMPANIES AND SHALL BE USED ONLY FOR THE PURPOSE FOR WHICH IT WAS SUPPLIED. IT SHALL NOT BE COPIED, REPRODUCED OR OTHERWISE TRANSMITTED IN ANY FORM OR BY ANY MEANS, AND SHALL BE RETURNED TO PROCESS SYSTEMS INTERNATIONAL, INC. UPON REQUEST.

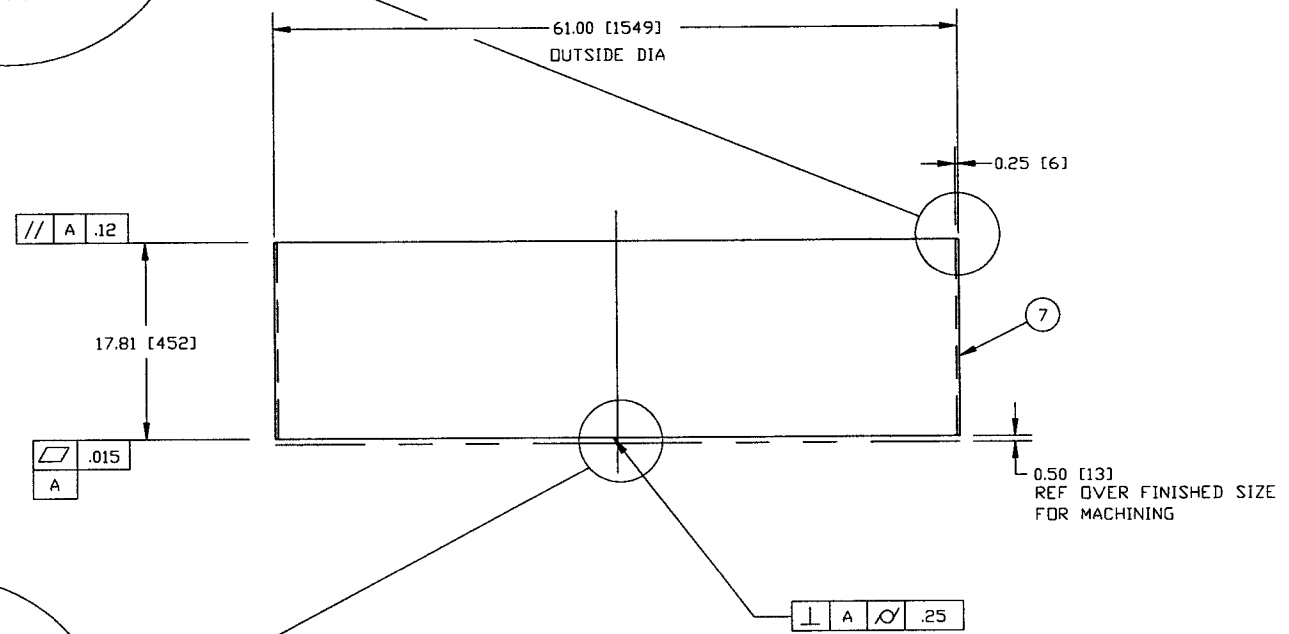
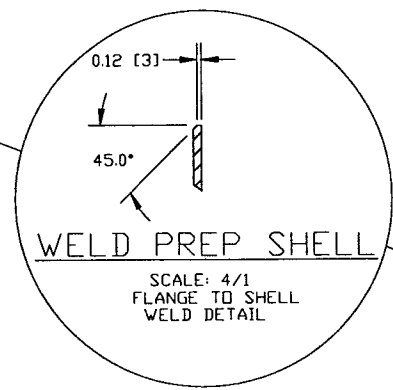
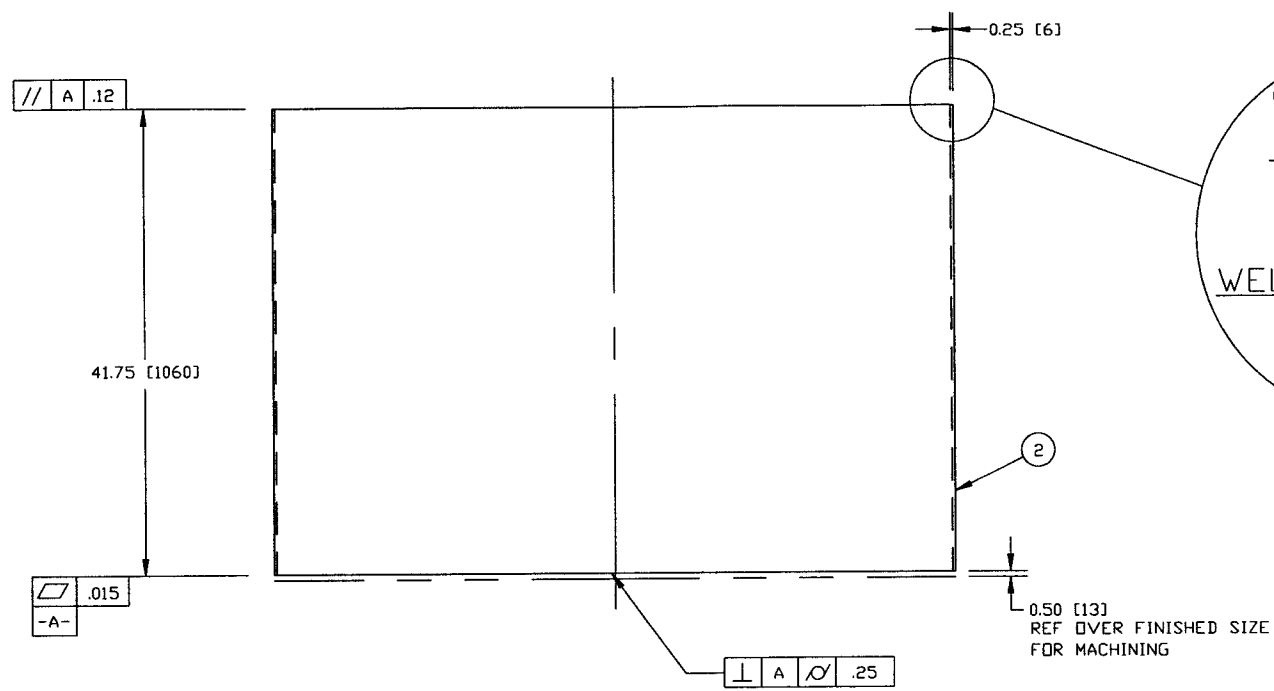
SYMBOL	CHARACTERISTIC	UNLESS OTHERWISE SPECIFIED TOLERANCES ARE IN INCHES	REV	DESCRIPTION	CHKD	DRWN	DATE	DCDR
\square	FLATNESS	FRACTIONAL: .01	0	ISSUED FOR FDR			4/29/96	0146
\circ	CYLINDRICITY	ANGULAR: .01	P1	PRELIMINARY			4/17/96	
//	PARALLELISM	TWO PLACE DECIMAL: .01	REV					
\perp	PERPENDICULARITY	THREE PLACE DECIMAL: .005						
\sphericalangle	ANGULARITY	FURNISHED SURFACE FINISH: REMOVE ALL BURRS						
\oplus	TRUE POSITION	DO NOT SCALE THIS DRAWING						
\odot	CONCENTRICITY	USED DIM: NEXT ASS'Y.						

PROCESS SYSTEMS INTERNATIONAL, INC.
20 WILKUP DR. WESTBOROUGH, MASSACHUSETTS 01581 USA

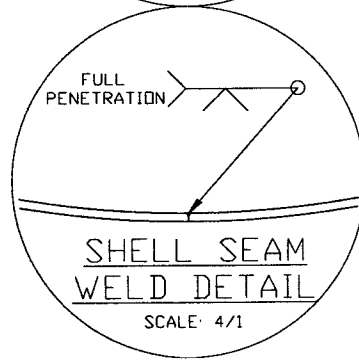
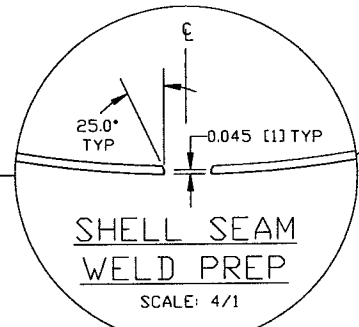
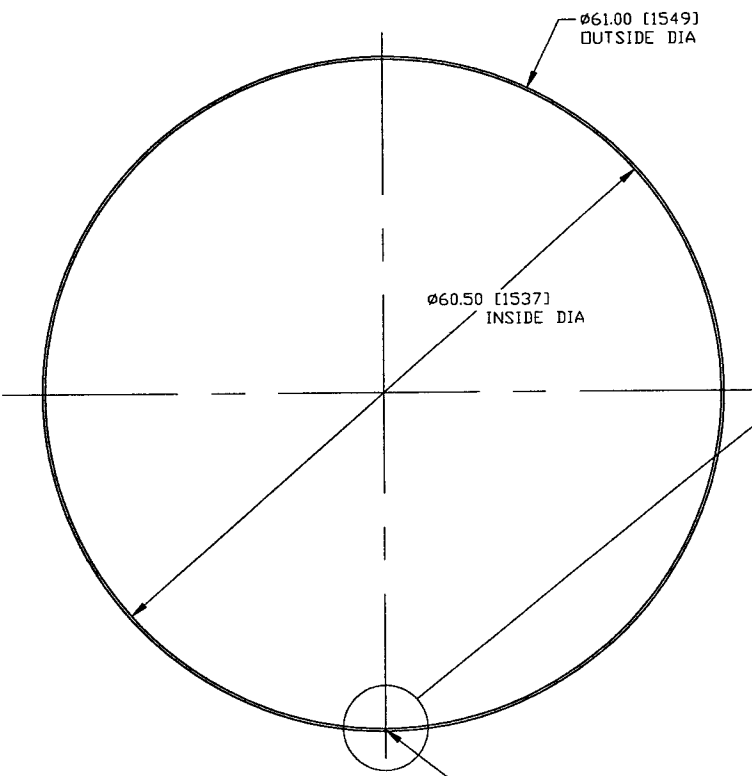
SPOOL BE-2
60.50" ID
LIGO VACUUM EQUIPMENT

CAD FILE: V0494BE2/4BE2S1
SIZE: D
DWG NO: V049-4-BE2
REV: 0

SCALE: 1-1/2" = 1"
SHEET: 1 OF 3



DETAIL 2
SCALE: 1-1/2"=1"
QTY. 1



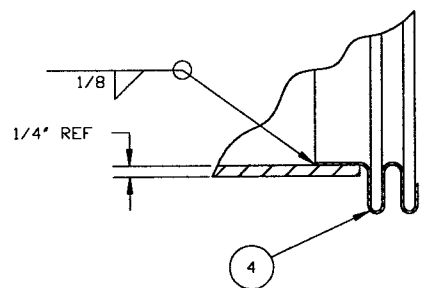
DETAIL 1
SCALE: 1-1/2"=1"
QTY. 1

NOT FOR CONSTRUCTION

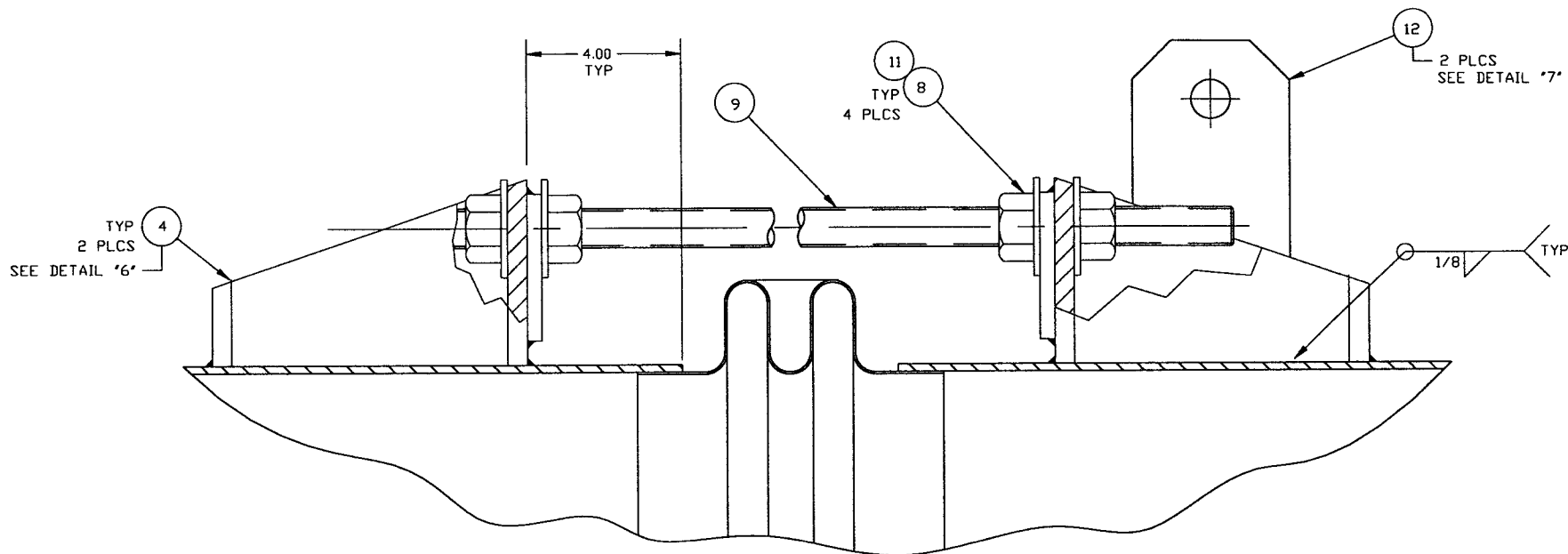
Raymond J. Cortis, PE
5/6/95
LIGO D961160-00-V

PROCESS SYSTEMS INTERNATIONAL INC. 20 WALKUP DR WESTBOROUGH, MASSACHUSETTS 01581 USA			
SPOOL BE-2 60.50" ID LIGO VACUUM EQUIPMENT			
CAD FILE 4BE2S2	SIZE D	DWG. NO. V049-4-BE2	REV. 0
SCALE AS NOTED	SHEET 2 OF 3		

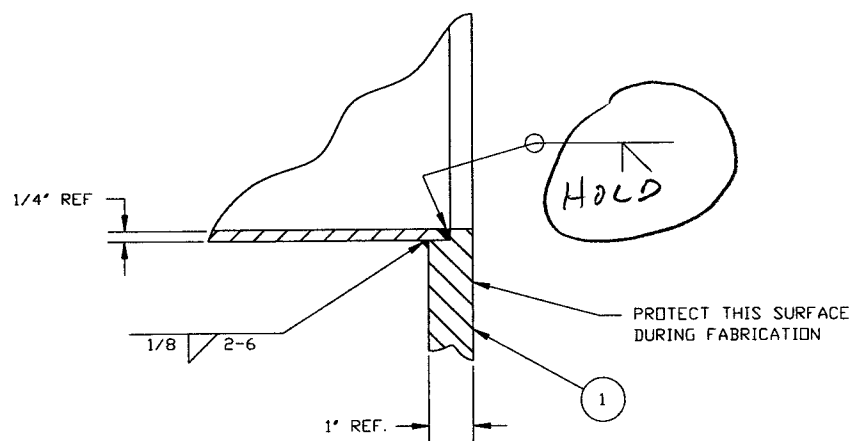
REV. 06, 1996 - 115008



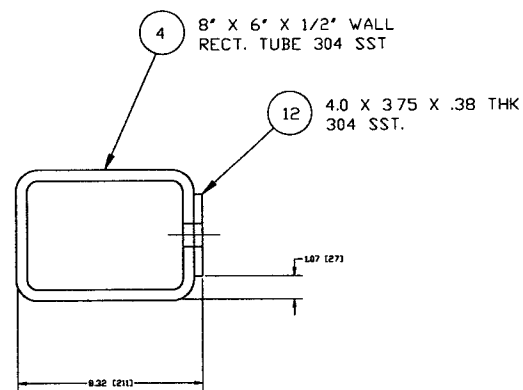
DETAIL "4"
QTY: 2



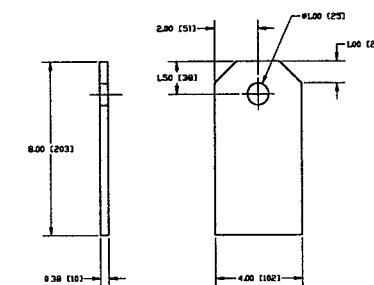
DETAIL "3"
EXPANSION JOINT & TIE ROD ASSY.
QTY: 3



DETAIL "5"



DETAIL "6"
QTY: 6



DETAIL "7"
QTY: 2

**NOT FOR
CONSTRUCTION**

*Hold
Raymond P. Cistto, PE
5/16/96 LIGO 0961160-00-V*

PROCESS SYSTEMS INTERNATIONAL INC. 20 WALKUP DR WESTBOROUGH, MASSACHUSETTS 01581 USA			
SPOOL BE-2 60 1/2" I.D. LIGO VACUUM EQUIPMENT			
CAD FILE 4BE2S3	SIZE D	DWG. NO. V049-4-BE2	REV 0
SCALE AS NOTED	SHEET 3 OF 3		

APR 27, 1996 - 075851