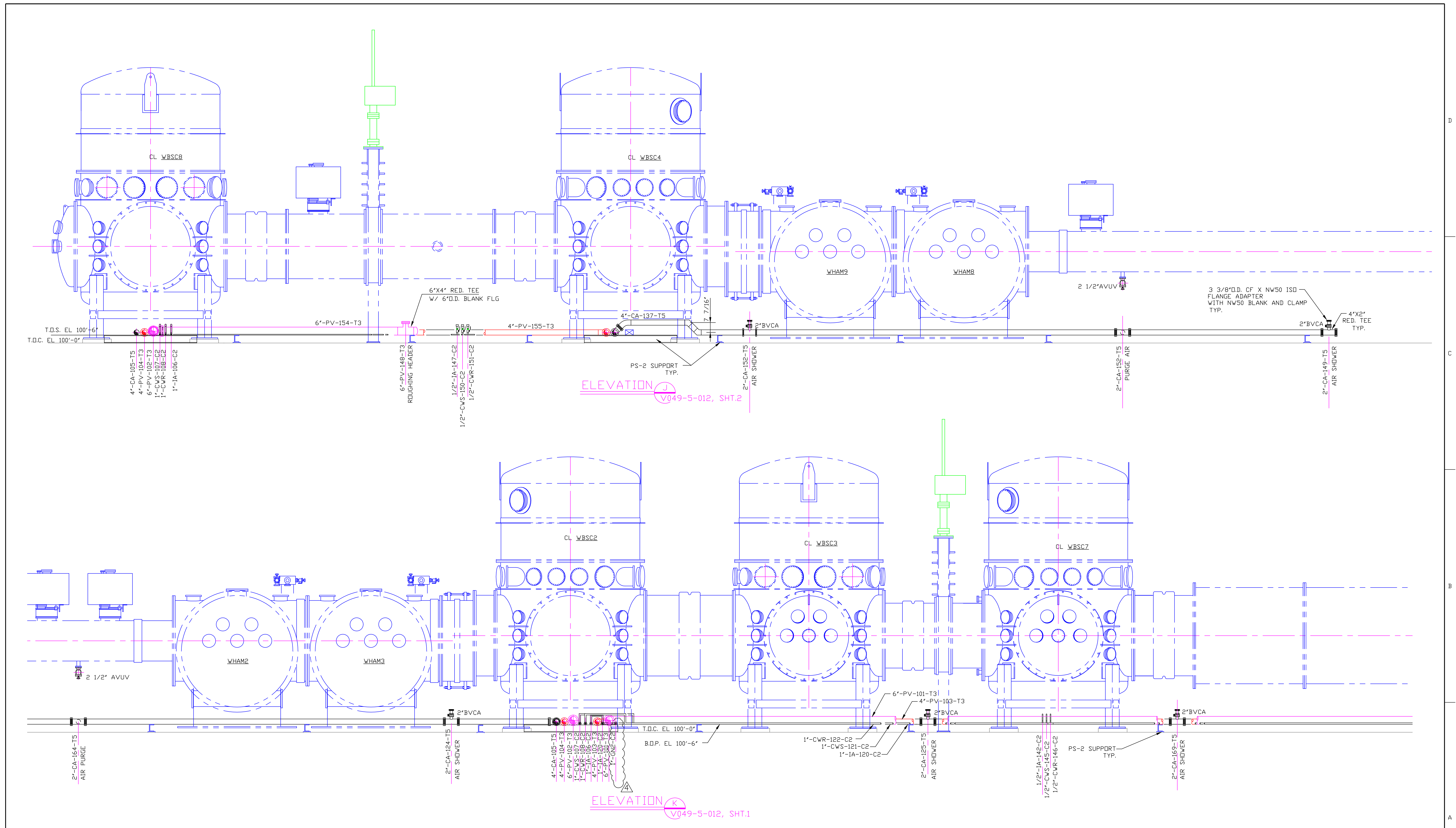


EDUCATION VERSION - NOT FOR COMMERCIAL USE



| DWG. NO.   | DESCRIPTION                            | DWG. NO. | DESCRIPTION |
|------------|--|----------|-------------|
| V049-5-012 | PIPING ARRANGEMENT PLAN CORNER STATION |          |             |
| V049-5-001 | EQUIPMENT ARRANGEMENT CORNER STATION   |          |             |
| 1101100    | LIGD VACUUM EQUIPMENT CORNER STATION   |          |             |

| REV | DESCRIPTION                        | ISSUE DESCRIPTION                |
|-----|------------------------------------|----------------------------------|
| 4   | AS-BUILT                           |                                  |
| 3   | REISSUED FOR CONSTRUCTION AS NOTED | DMW RDC REC SPIDER 06.06.97 0491 |
| 2   | ISSUED FOR CONSTRUCTION            | DMW RDC REC RM 04.28.97 0440     |
| 1   | ISSUED FOR FDR UPDATE & BID        | DMW RDC REC RM 12.24.96 0153     |
| 0   | ISSUED FOR FINAL DESIGN REVIEW     | DMW RDC REC RM 5.3.96 0153       |

| PROPRIETARY AND CONFIDENTIAL  | UNLESS OTHERWISE SPECIFIED | SCALE      | DATE    | REV. |
|---|----------------------------|------------|---------|------|
| THIS DOCUMENT CONTAINS PROPRIETARY INFORMATION BELONGING TO PROCESS SYSTEMS INTERNATIONAL, INC. OR ITS AFFILIATED COMPANIES AND SHALL BE USED ONLY FOR THE PURPOSE FOR WHICH IT WAS SUPPLIED. IT SHALL NOT BE COPIED, REPRODUCED OR OTHERWISE USED, NOR SHALL SUCH INFORMATION BE FURNISHED IN WHOLE OR IN PART TO OTHERS EXCEPT IN ACCORDANCE WITH THE TERMS OF ANY AGREEMENT UNDER WHICH IT WAS SUPPLIED OR WITH THE PRIOR WRITTEN CONSENT OF PROCESS SYSTEMS INTERNATIONAL, INC. AND SHALL BE RETURNED UPON REQUEST. | DIMENSIONS ARE IN INCHES   | 3/8"=1'-0" | 6/26/98 | 0623 |
|   | TOLERANCES:                |            |         |      |
|   | FRACTIONAL ±               |            |         |      |
|   | ANGULAR ±                  |            |         |      |
|   | BEND ±                     |            |         |      |
|   | TWO PLACE DECIMAL ±        |            |         |      |
|   | THREE PLACE DECIMAL ±      |            |         |      |
|   | FINISHED SURFACE RMS       |            |         |      |
|   | BREAK CORNERS IN           |            |         |      |
|   | REMOVE ALL BURRS           |            |         |      |

**PROCESS SYSTEMS INTERNATIONAL INC.**  
20 WALKUP DR. WESTBOROUGH, MASSACHUSETTS 01581 USA

**PIPING ARRANGEMENT ELEVATIONS**  
CORNER STATION WASHINGTON LIGD VACUUM EQUIPMENT

CAD FILE: V0495013/5013S1  
SIZE: D  
DWG. NO.: V049-5-013  
REV. 4

SCALE: 3/8"=1'-0"

SHEET 1 OF 2

Jun 18, 1998 13:24:60