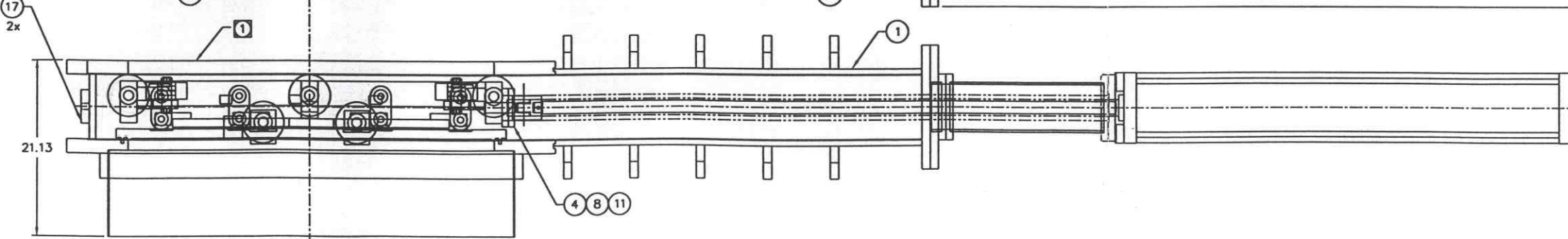
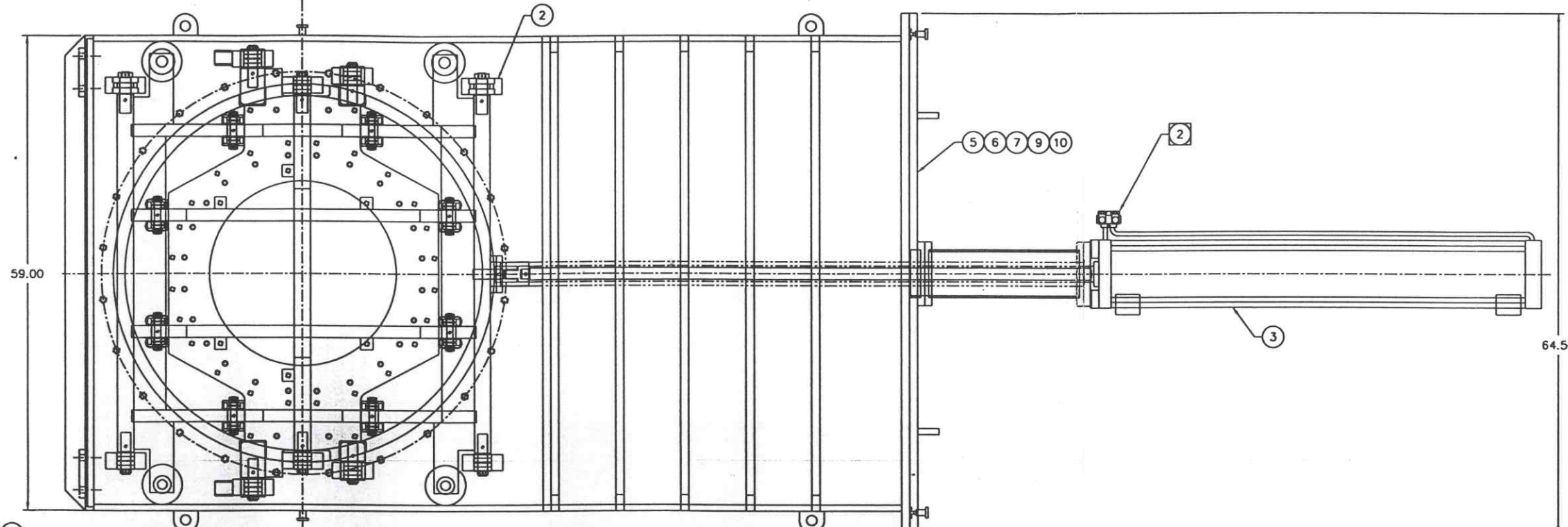
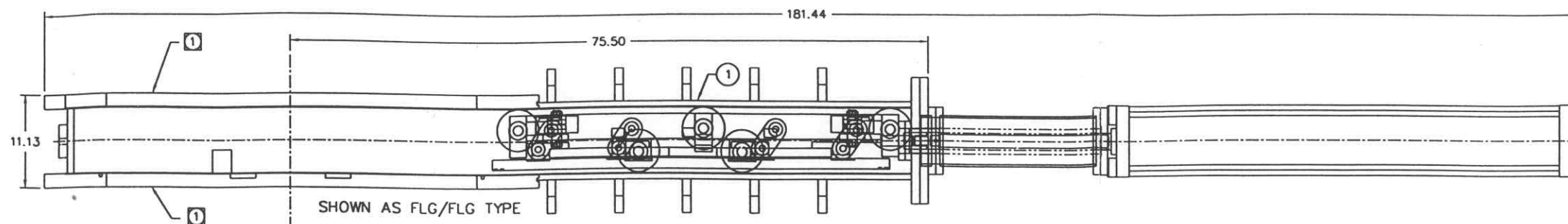


REV.	DESCRIPTION	DATE	BY
A	RELEASED		
B	ADDED MOUNTING PADS, CHANGED NOTE 2, AND MATL. SPEC.		



NOTES:

- 1 VACUUM SEALING SURFACE
- 2 USE AIR FLOW ADJUSTMENT WASHER. ADJUSTED CARRIAGE MOVES 5 MINS. FOR CLOSE, AND 5 MINS. FOR OPEN WITHOUT SPEED CONTROL.
- 3 FINAL ASSEMBLY AND CLEANING PER ASSY-LG-001.
- 4 ALL O-RINGS TO BE PRE-BAKED AND GREASE FREE.

5 MINUTE TOTAL OPEN,
5 " " CLOSE

ITEM	QTY.	PART NO.	DESCRIPTION
1	1	4103225-01	BODY WELDMENT, (BW/FLG TYPE)
		4103225-02	BODY WELDMENT, (FLG/FLG TYPE)
2	1	3103255	CARRIAGE ASSEMBLY
3	1	3103292	ACTUATOR ASSEMBLY
4	1	462-CG	4" CF FLANGE Cu GASKET
5	1		O-RING, #41.75 ID, 1/4 C/S, VITON
6	1		O-RING, #43.88 ID, 1/4 C/S, VITON
7	20		SHCS, 3/4-10, 2.75 LG
8	10		VENTED SHCS, 5/16-24, 1.25 LG
9	20		NUT, 3/4-10
10	20		LOCKWASHER, SPLIT, 3/4
11	10		LOCKWASHER, SPLIT, 5/16
12	1	1101460	GNB NAME PLATE
13	1	1103293-01	SPARE PARTS LIST, G44P
14	REF	1103098-05	OUTLINE DWG, (BW/FLG TYPE)
		1103098-04	OUTLINE DWG, (FLG/FLG TYPE)
15	1	34264	GATE ADJUSTMENT
16	1	1102202	INSTRUCTION DWG
17	2		MOUNTING PAD, 1x4x6 SST PLT. WITH 2x 3/4-18 THRL

PART LIST		MATERIAL SPECIFICATION SST	
UNLESS OTHERWISE SPECIFIED DIMENSIONS ARE IN INCHES TOLERANCES ARE: DECIMALS ANGLES FRACTIONS .005 ± .010 ± .100 12°/15° ±.005 ±.010 H, C, J WITHIN .05 UNSPECIFIED FILED EDGES BREAK EDGES .040 ± .030 REMOVE ALL BURRS	CONTRACT OR SALES ORDER NO.	GNB Corporation SCIENTIFIC AND INDUSTRIAL EQUIPMENT 30871 San Benito Court HAYWARD, CALIFORNIA 94544 (510) 441-1900 FAX: (510) 441-0838	
THIRD ANGLE PROJECTION	APPROVALS DATE	TITLE ASSEMBLY DWG G44 PNEUMATIC	
DO NOT SCALE DRAWING	DRAWN BY: AH 3/14/96	DWG. NO. 103279	
CAD FILE NAME C:\96\6028\4103279.DWG	ENGINEER: AH	SCALE: 1=8 SHEET 1 OF 1	

4-5-96

A/N