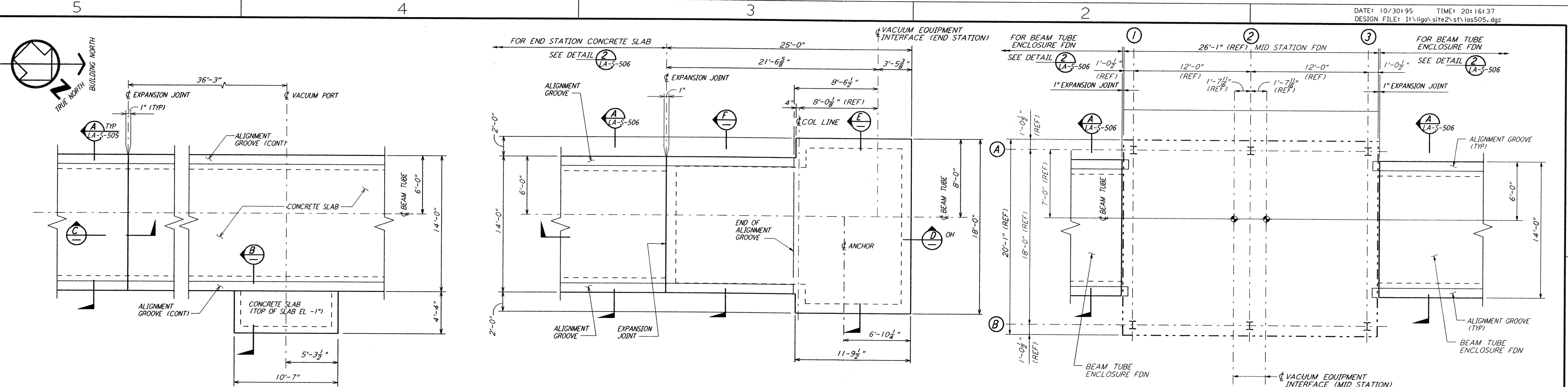


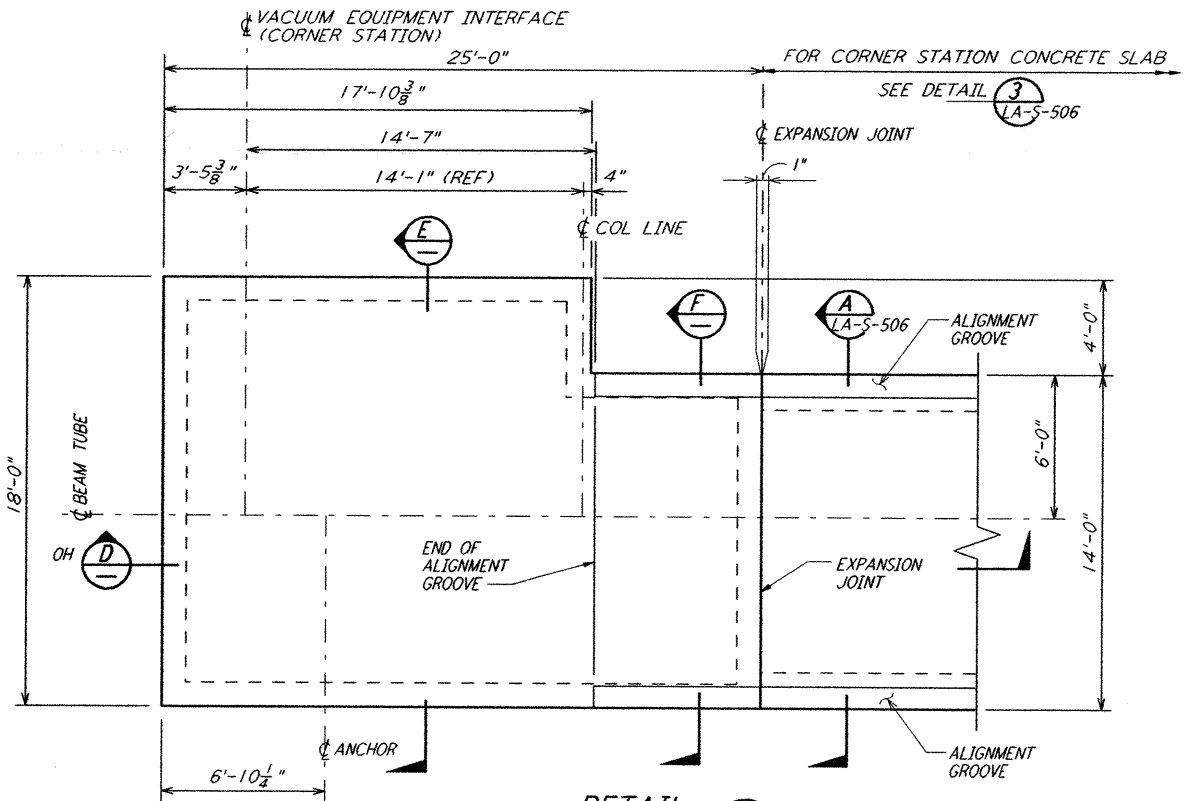
This document and the design it covers are the property of PARSONS. They are loaned only with the borrower's expressed written agreement that they will not be reproduced, copied, loaned, exhibited, or used in any other way, except by written consent from PARSONS.



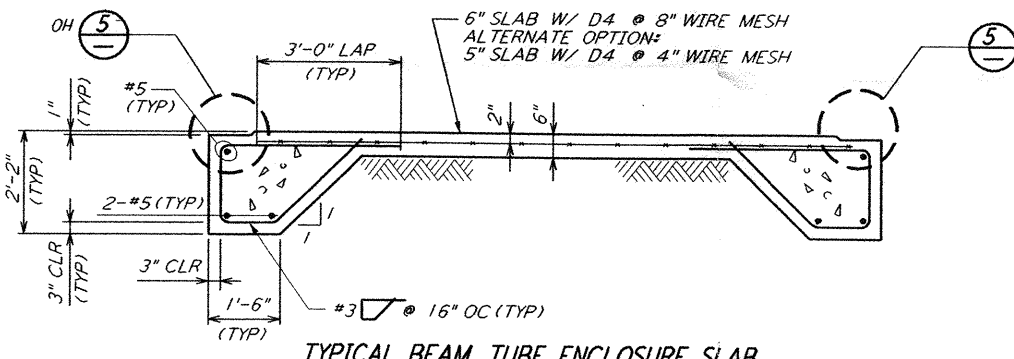
**DETAIL 1** REF  
 LA-S-505 LA-S-504  
 1/4" = 1'-0"

**DETAIL 2** REF  
 LA-S-505 LA-S-504  
 1/4" = 1'-0"

**DETAIL 3** REF  
 LA-S-504 BT-S-004  
 1/4" = 1'-0"



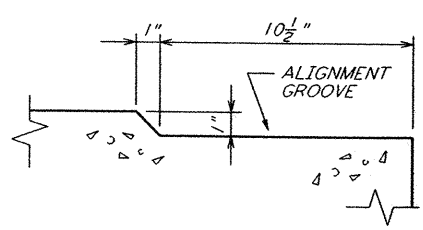
**DETAIL 4** REF  
 LA-S-505 LA-S-504  
 1/4" = 1'-0"



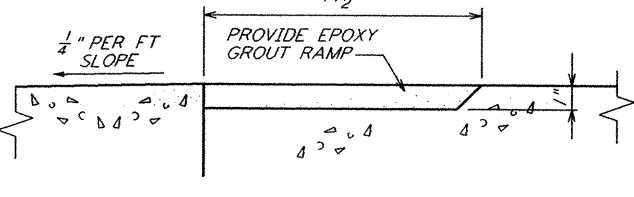
**SECTION A** REF  
 LA-S-505 LA-S-506  
 1/2" = 1'-0"

**SECTION B**  
 1/2" = 1'-0"

**SECTION C**  
 1/2" = 1'-0"

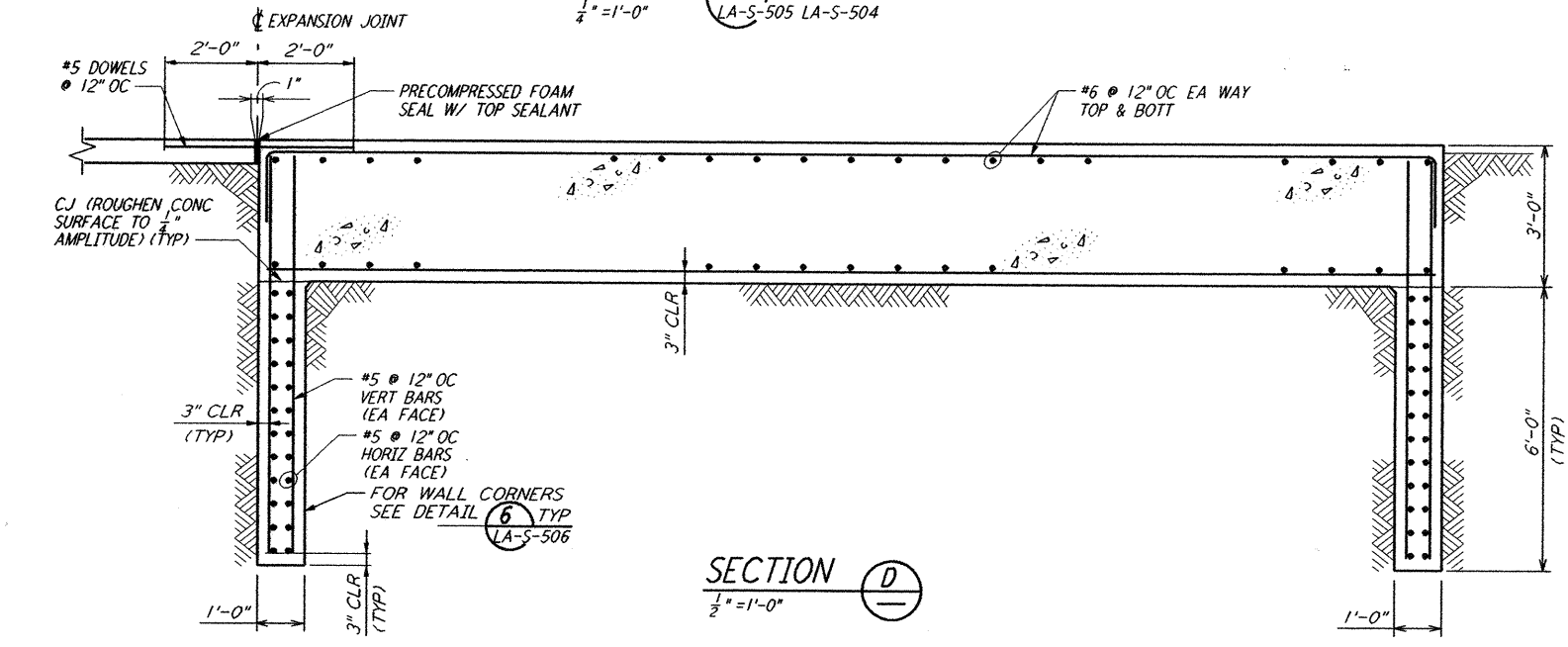
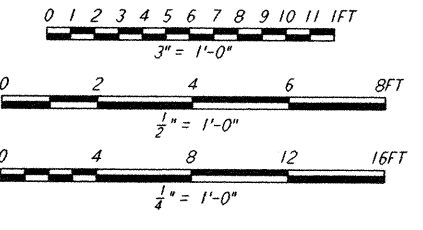


**DETAIL 5** REF  
 LA-S-505 LA-S-506  
 3" = 1'-0"

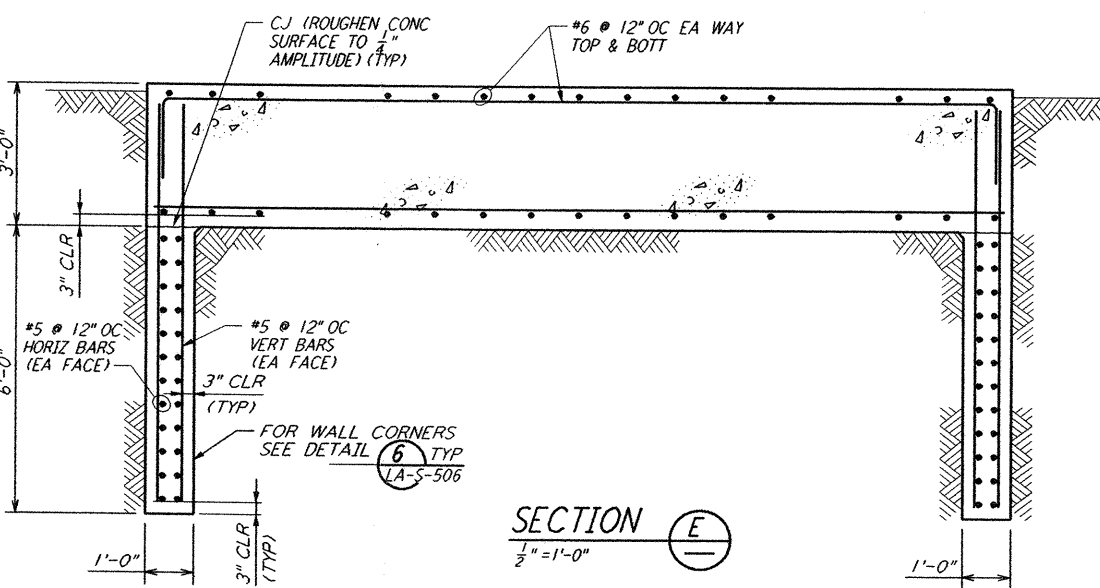


**DETAIL 6**  
 3" = 1'-0"

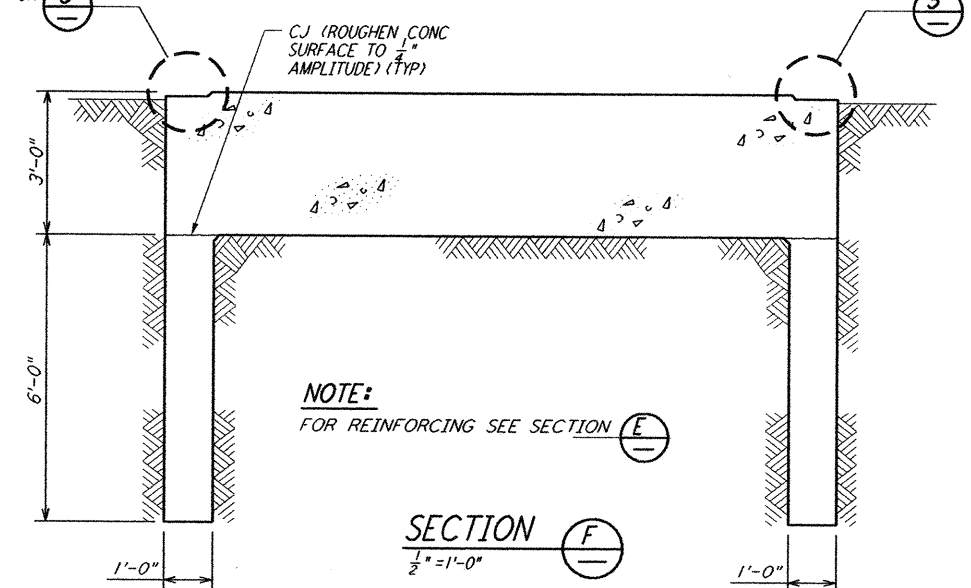
**NOTE:**  
 1. FOR GENERAL NOTES, ABBREVIATIONS AND LEGEND SEE DRAWING LA-S-501.



**SECTION D**  
 1/2" = 1'-0"



**SECTION E**  
 1/2" = 1'-0"



**SECTION F**  
 1/2" = 1'-0"

**LIGO-D961240-A-0**

NO.	DATE	APPROVED BY	DESCRIPTION OF REVISION
9			
8			
7			
6			
5			
4			
3			
2			
1			

NO.	DATE	APPROVED BY	ISSUED FOR
A	10-31-95	TOM	PRELIMINARY DESIGN REVIEW

DATE	10-31-95
DRAWN	MCS
CHECKED	
ENGINEER	
PROJ MGR	

**PARSONS**  
 100 WEST WALNUT STREET  
 PASADENA, CALIFORNIA

**LIGO**  
 CALIFORNIA INSTITUTE OF TECHNOLOGY  
 MASSACHUSETTS INSTITUTE OF TECHNOLOGY

**LASER INTERFEROMETER  
 GRAVITATIONAL-WAVE OBSERVATORY  
 SITE NO. 2 - LIVINGSTON, LOUISIANA**

TITLE: **BEAM TUBE ENCLOSURE SECTIONS & DETAILS SHEET 1**

SCALE: **AS NOTED**

CONTRACT NUMBER: **PPI50969**

PROJECT NUMBER: **8094**

REVISIONS: **LA-S-505**

Mon Oct 30 20:15:02 1995 s3-v18b2 J:\PLOTS\QUEUES\18B2\ST505.PRF