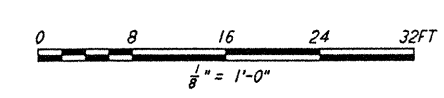
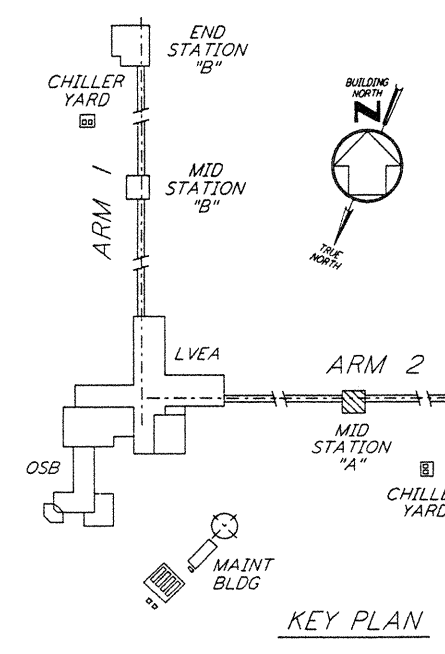
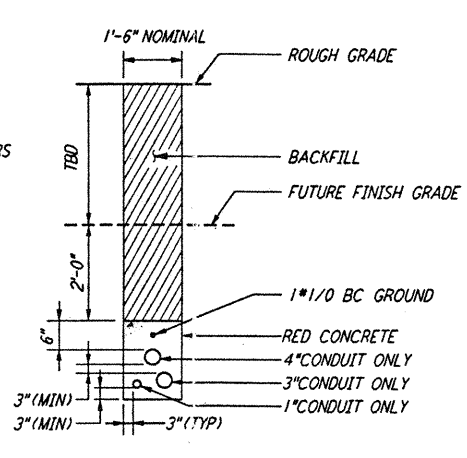
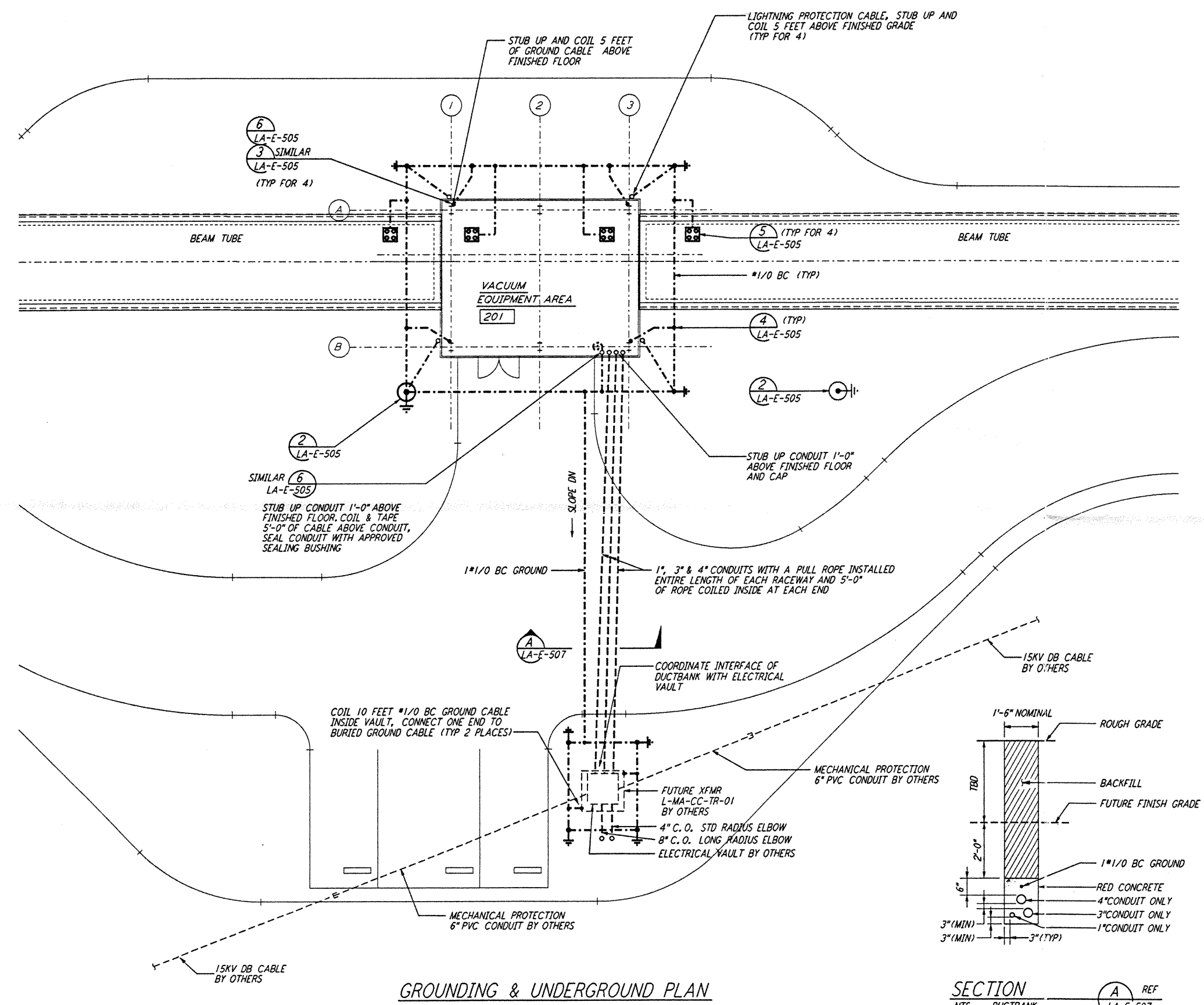
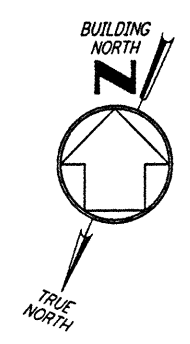


**NOTES:**

1. SEE CIVIL DRAWING LA-C-521 FOR ACTUAL LOCATION OF ELECTRICAL VAULT.
2. SEE SPECIFICATION SECTION 16670 FOR LIGHTNING PROTECTION AND GROUNDING MATERIAL.
3. LARGE DIAMETER PVC CONDUIT ELBOW SHALL ACCOMMODATE 15 KV TERMINATION ELBOW (TERMINATOR BY OTHERS).
4. CONDUIT ELBOW STUB-UPS AT ELECTRICAL VAULT ARE BEING PROVIDED TO ACCOMMODATE FUTURE TAKE-OUT TRANSFORMERS BY OTHERS.
5. PROVIDE PULLROPES AND CONDUIT CAPS FOR ALL CONDUIT STUB-UPS.

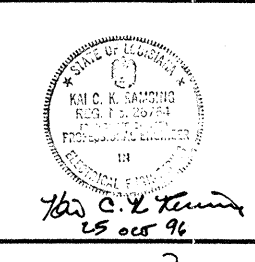


This document and the design it covers are the property of PARSONS. They are loaned only with the borrower's expressed written agreement that they will not be reproduced, copied, loaned, exhibited, or used in any other way, except by written consent from PARSONS to the borrower.

I:\LIC\CC\1120230.DWG 5374980C J:\VOLUME\10E507\10E507.HMTF

NO.	DATE	BY	CHKD	ENGR	PROJ	DESCRIPTION

ISSUED FOR CONSTRUCTION	
DRAWN	M. M. 11-15-96
CHECKED	JCL 7-28-96
ENGINEER	KCC 10-25-96
PROJ	2223 11/15/96



**PARSONS**  
 100 WEST WALNUT STREET  
 PASADENA, CALIFORNIA

**LIGO**  
 CALIFORNIA INSTITUTE OF TECHNOLOGY  
 MASSACHUSETTS INSTITUTE OF TECHNOLOGY

LASER INTERFEROMETER  
 GRAVITATIONAL-WAVE OBSERVATORY  
 BEAM TUBE ENCLOSURE - LIVINGSTON, LA

TITLE	SCALE	CONTRACT NUMBER	PROJECT NUMBER
ELECTRICAL MID STATION A GROUNDING & UNDERGROUND PLAN	AS NOTED	PP150969	8094
SHEET NUMBER		REVISION	
LA-E-507			