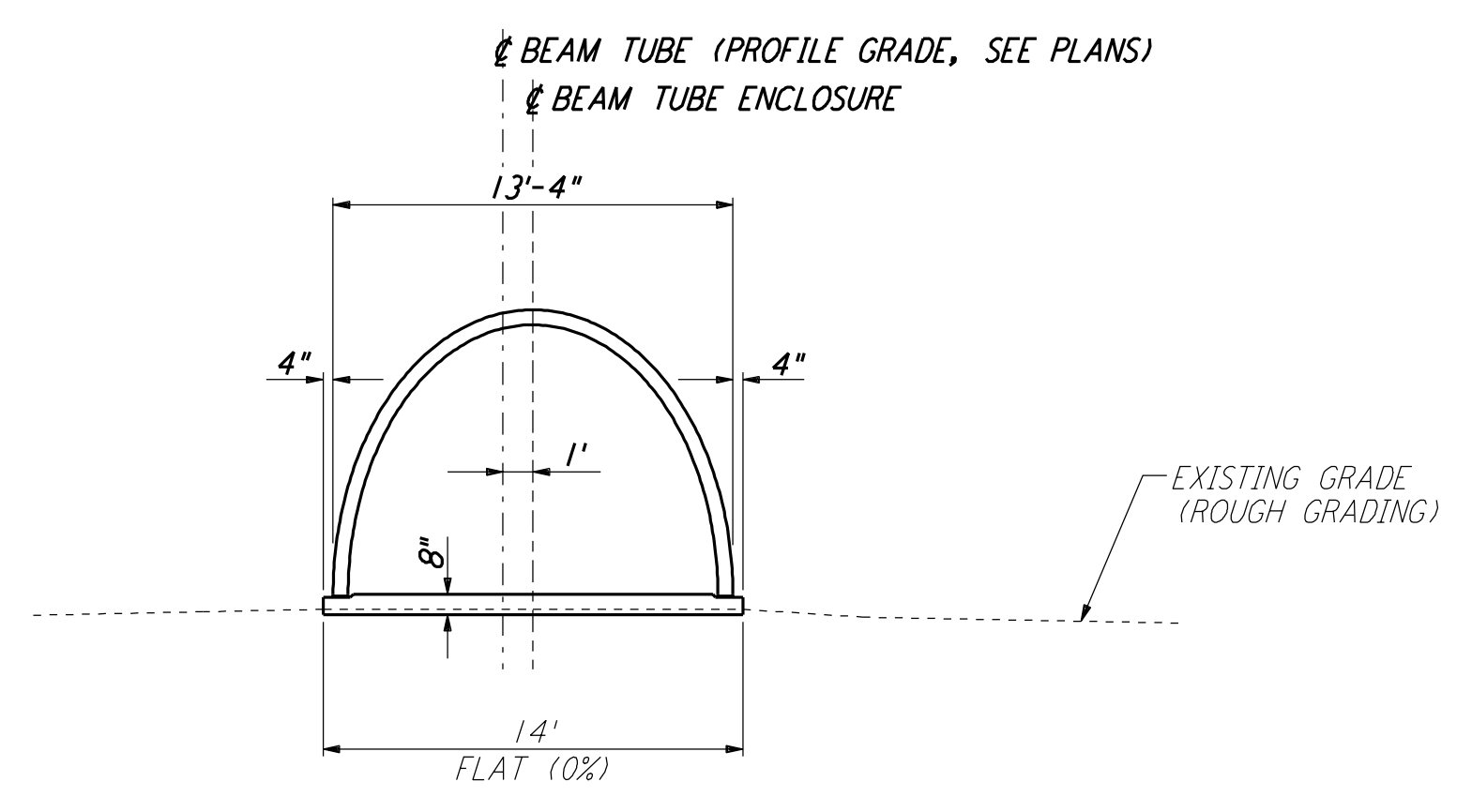
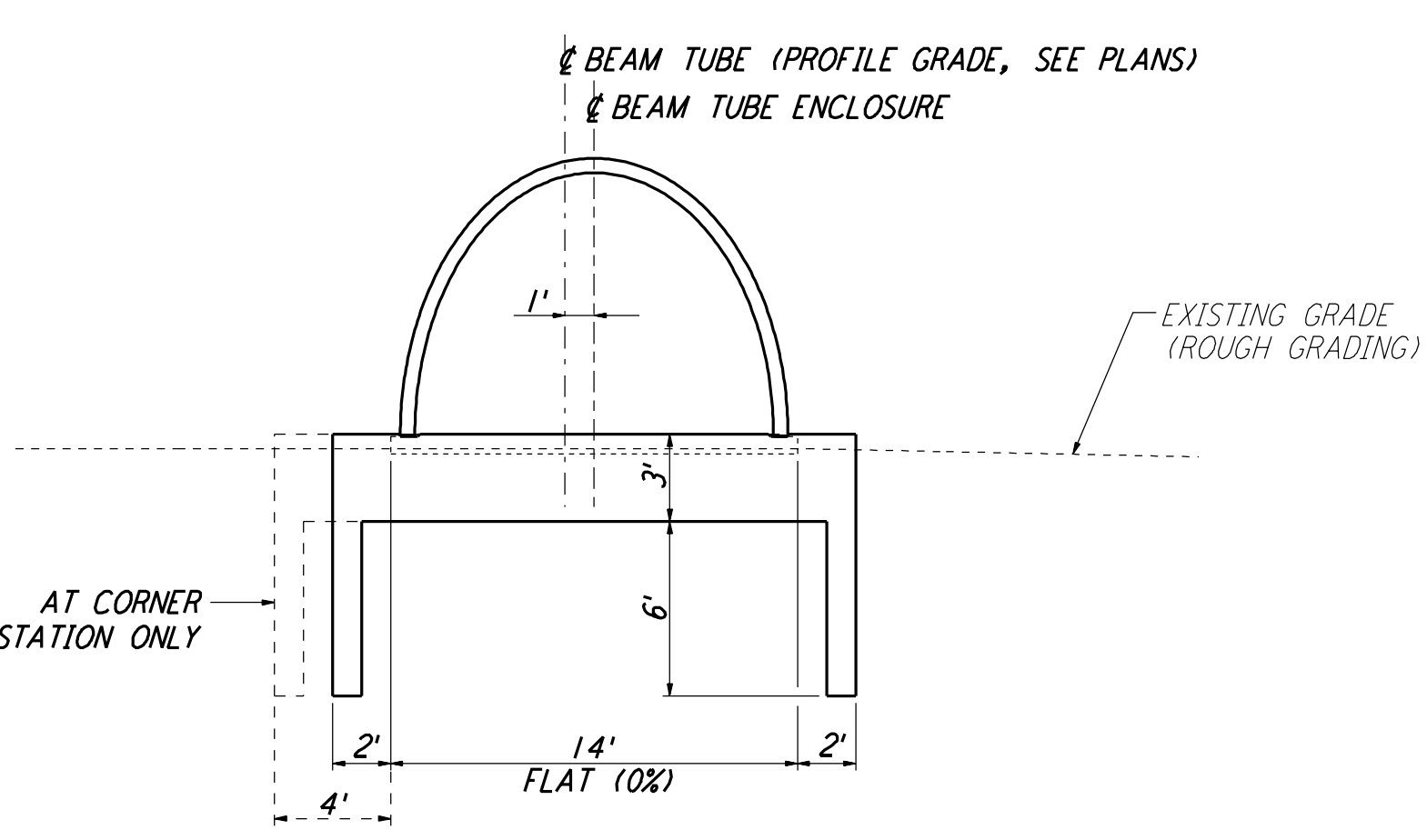


This document and the design it covers are the property of PARSONS. They are loaned only with the borrower's expressed written agreement that they will not be reproduced, copied, loaned, exhibited, or used in any other way, except by written consent from PARSONS to the borrower.



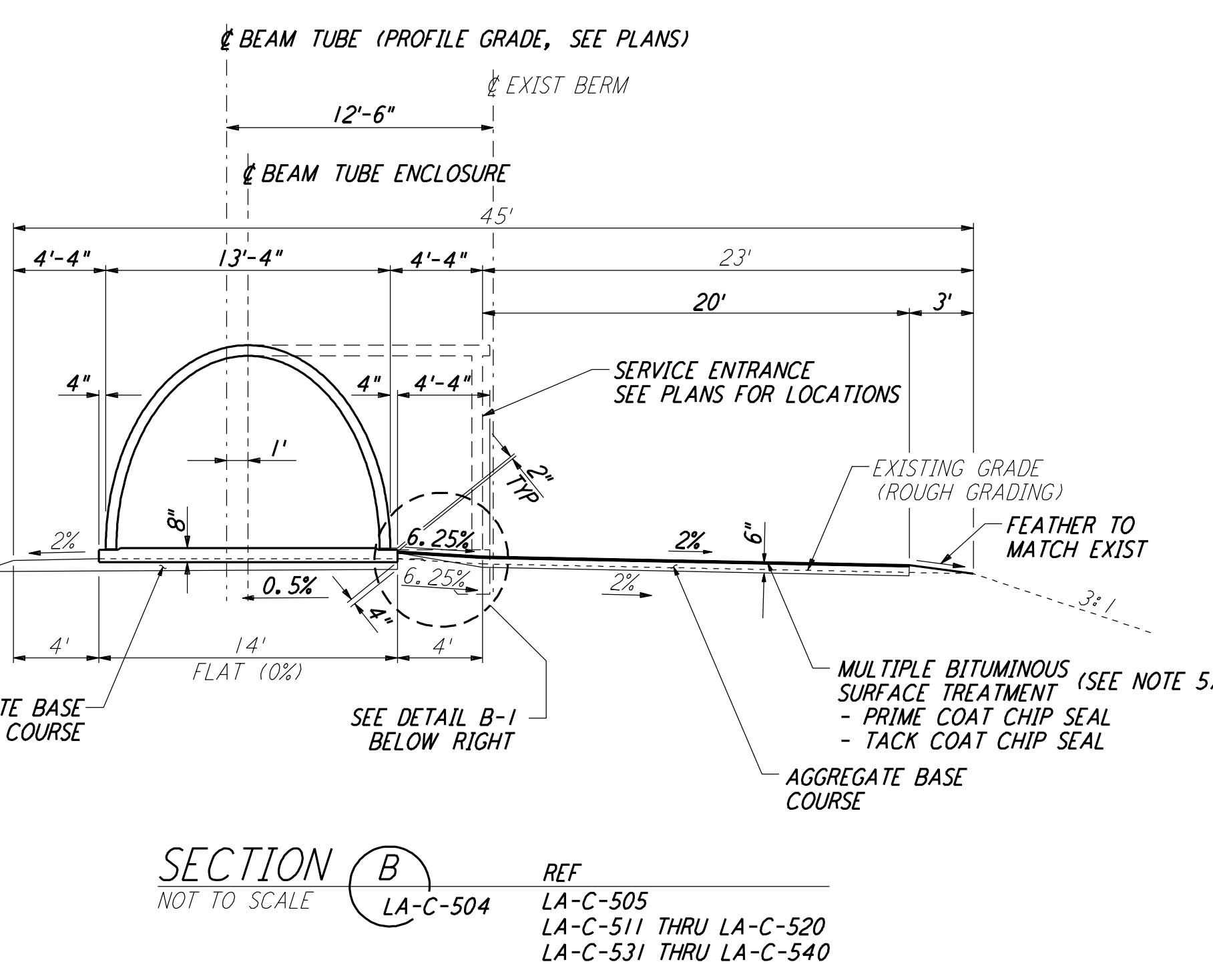
**SECTION A**  
 NOT TO SCALE  
 REF: LA-C-505, LA-C-511, LA-C-515, LA-C-520, LA-C-531, LA-C-540

<b>SOUTHWEST ARM:</b>	STA 1+72.48 THRU STA 5+84.85 STA 64+90.37 THRU STA 66+04.96 STA 66+33.87 THRU STA 67+11.70 STA 128+56.67 THRU STA 130+64.05	<b>SOUTHWEST ARM:</b>	STA 1+72.48 THRU STA 4+54.37 STA 64+90.37 THRU STA 66+04.96 STA 66+33.86 THRU STA 67+11.70 STA 128+56.67 THRU STA 130+64.05
-----------------------	--	-----------------------	--



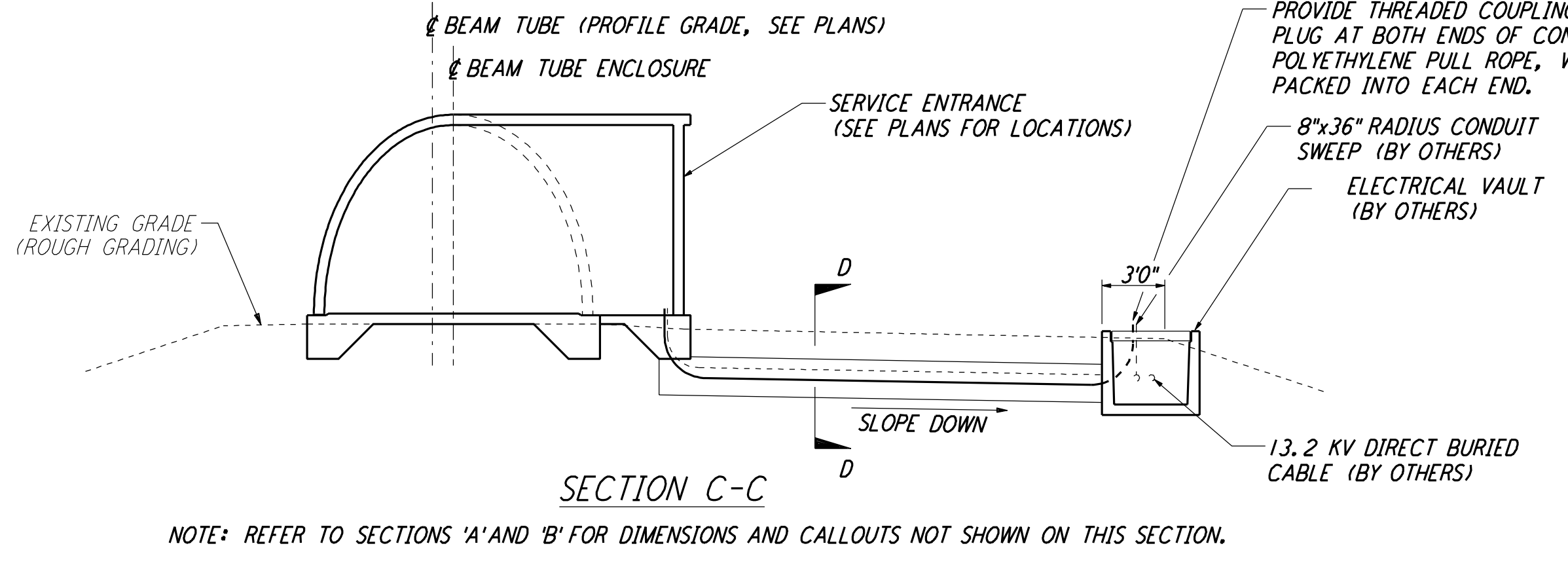
**SECTION A (SIM)**  
 NOT TO SCALE  
 REF: LA-C-505, LA-C-511, LA-C-520, LA-C-531, LA-C-540

<b>SOUTHWEST ARM:</b>	STA 1+47.48 THRU STA 1+72.48 STA 130+64.05 THRU STA 130+89.05	<b>SOUTHWEST ARM:</b>	STA 1+47.48 THRU STA 1+72.48 STA 130+64.05 THRU STA 130+89.05
-----------------------	--	-----------------------	--

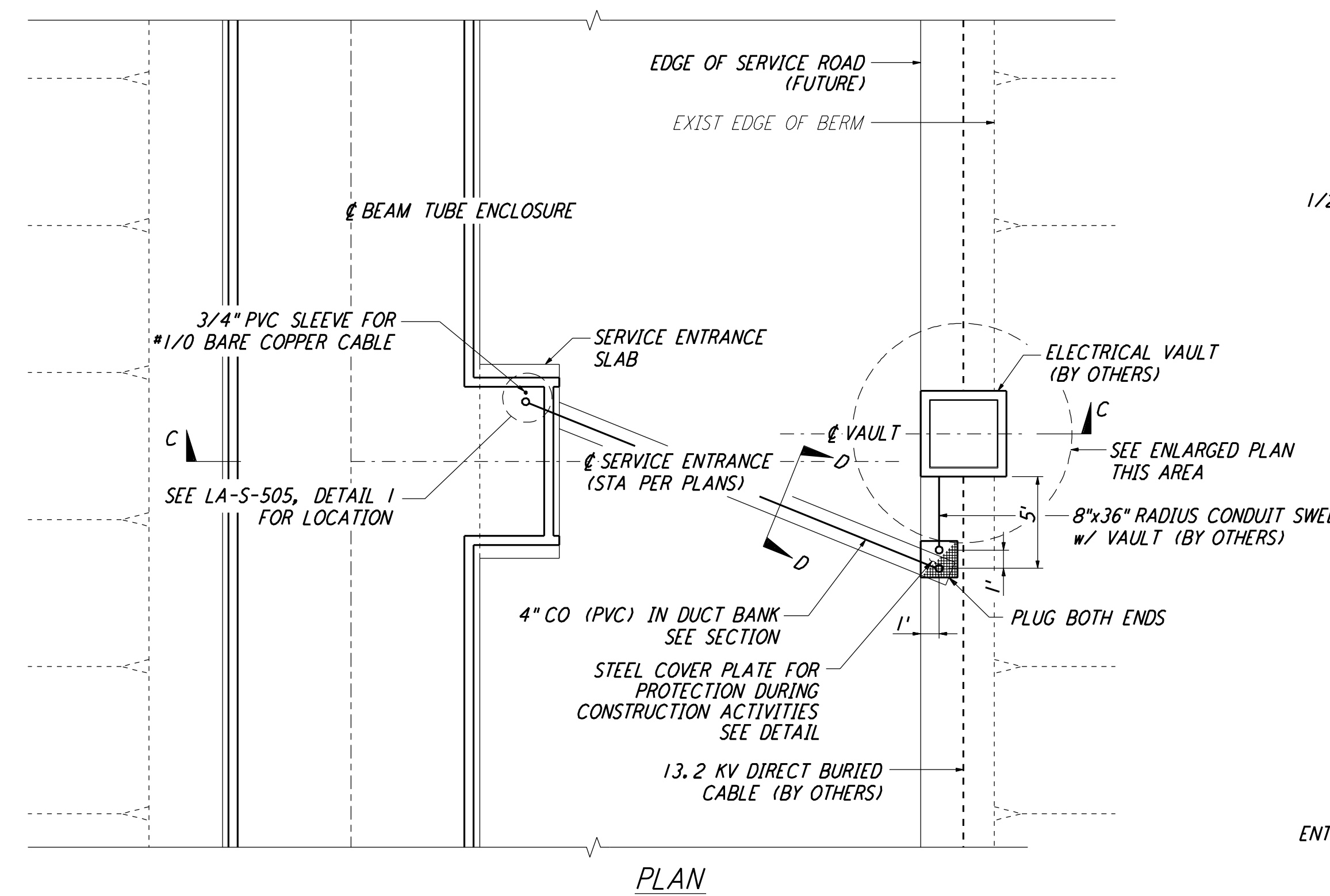


**SECTION B**  
 NOT TO SCALE  
 REF: LA-C-505, LA-C-511 THRU LA-C-520, LA-C-531 THRU LA-C-540

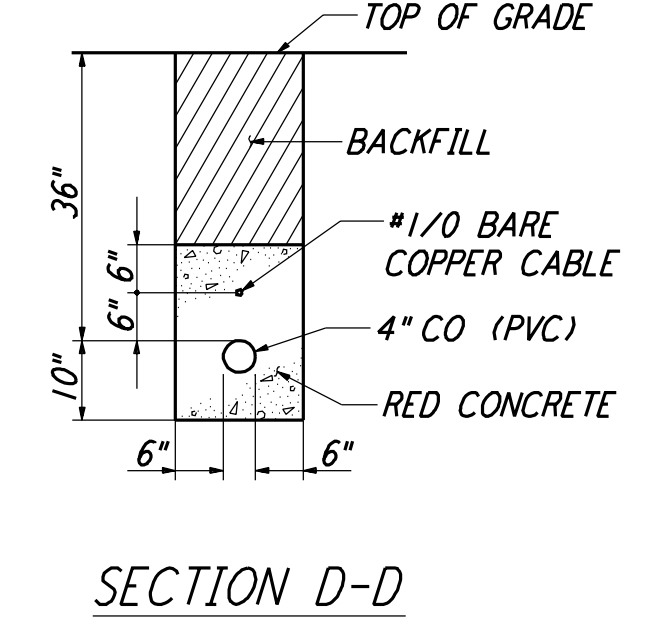
<b>SOUTHWEST ARM:</b>	STA 5+84.85 THRU STA 64+90.37 STA 67+11.70 THRU STA 128+56.67	<b>SOUTHWEST ARM:</b>	STA 4+54.37 THRU STA 64+90.37 STA 67+11.70 THRU STA 128+56.67
-----------------------	--	-----------------------	--



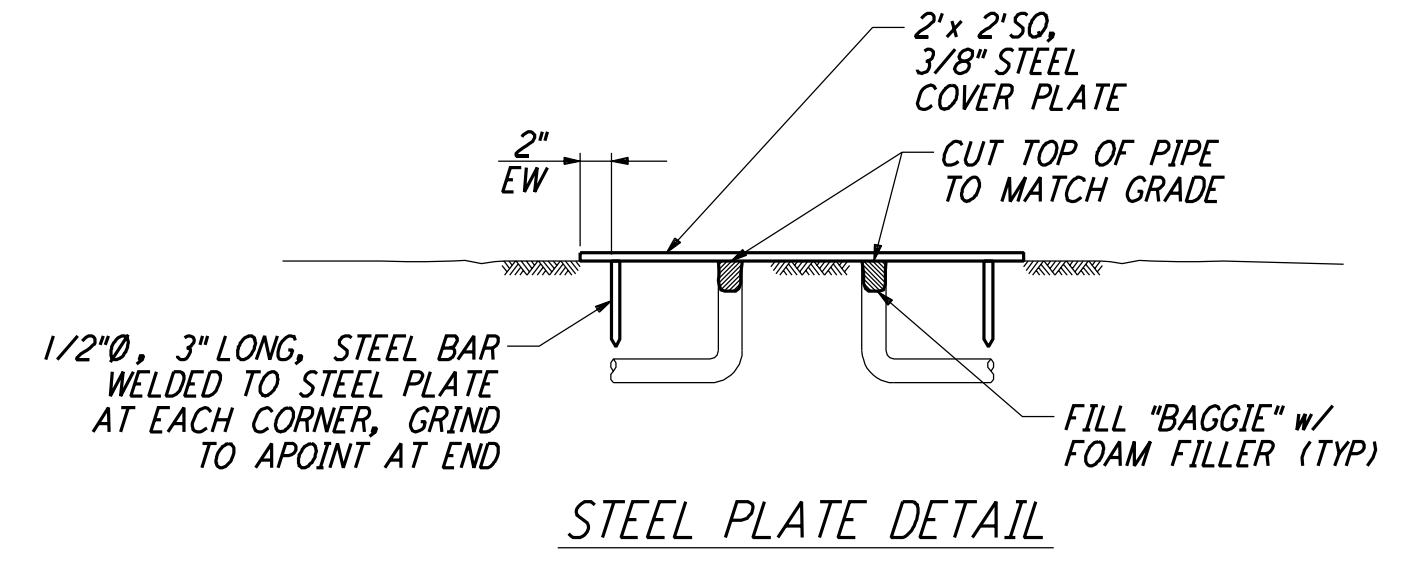
**SECTION C-C**  
 NOTE: REFER TO SECTIONS 'A' AND 'B' FOR DIMENSIONS AND CALLOUTS NOT SHOWN ON THIS SECTION.



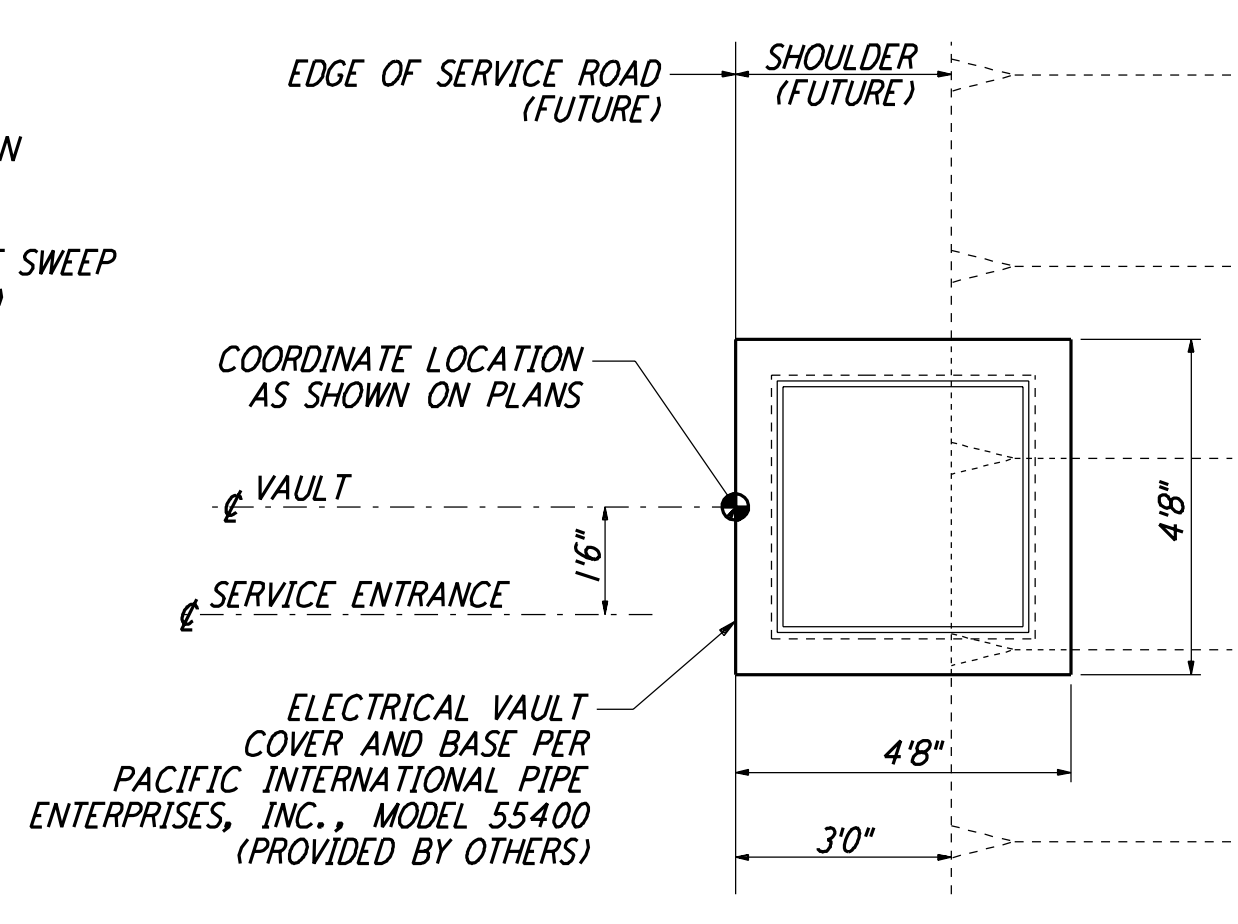
**TYPICAL LOCATION PLAN @ SERVICE ENTRANCE FOR ELECTRICAL VAULT**  
 NOT TO SCALE



**SECTION D-D**

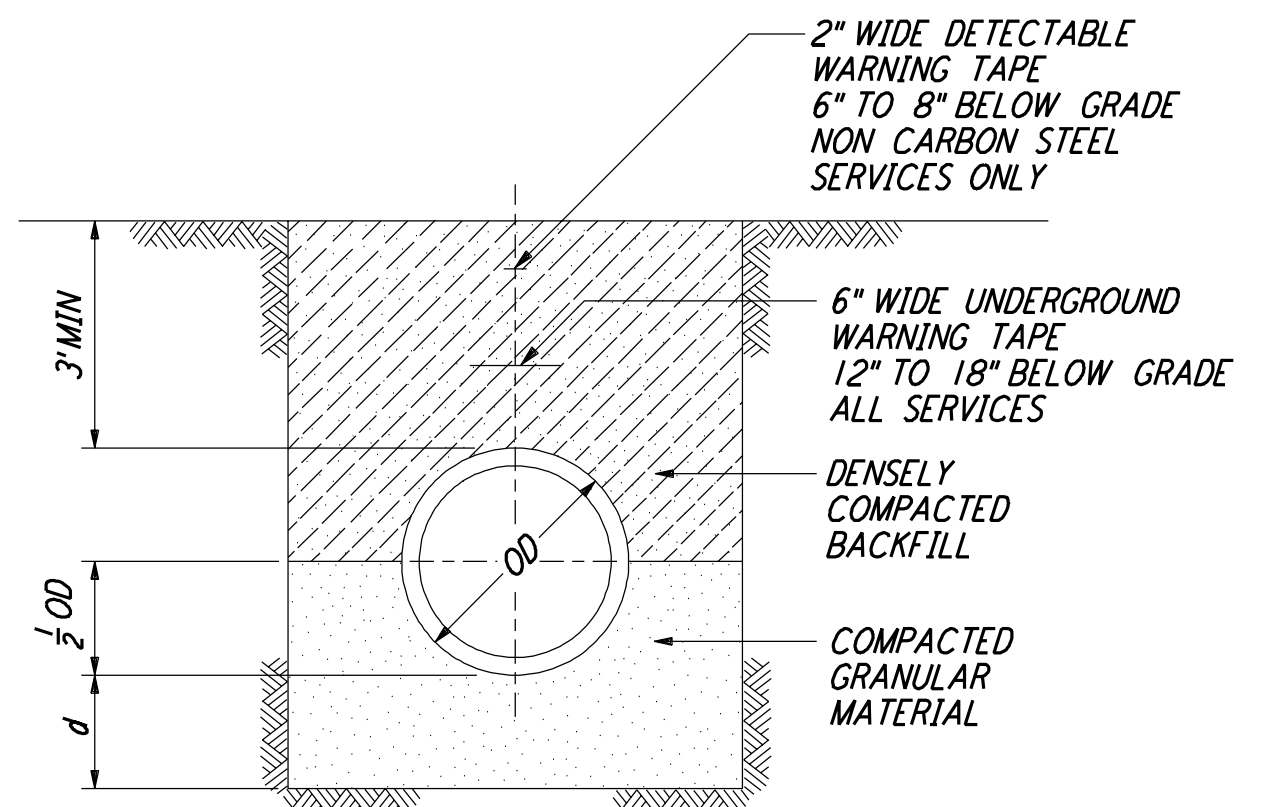


**STEEL PLATE DETAIL**



**ENLARGED PLAN @ VAULT**

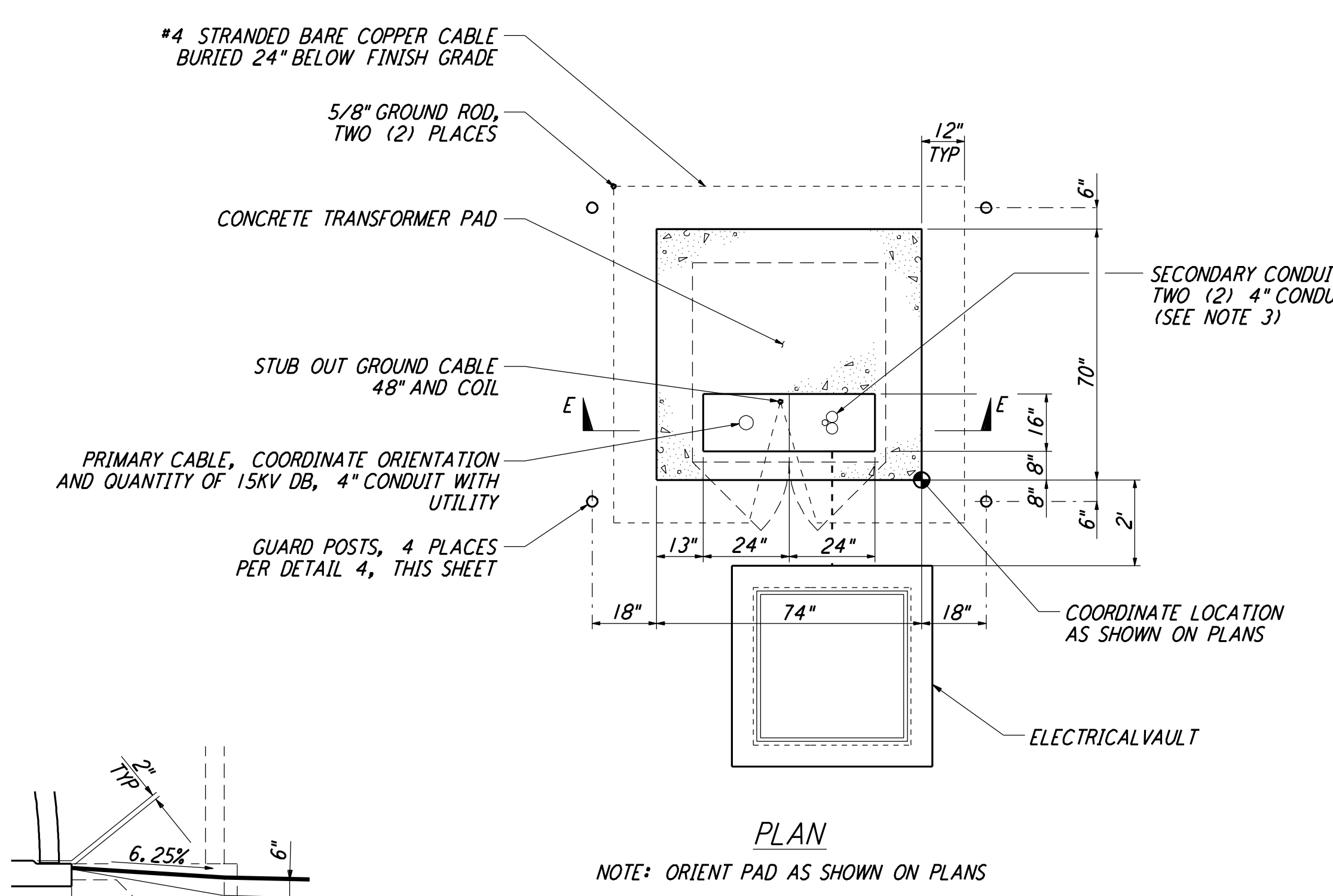
- NOTES:**
- SEE SHEET LA-C-502 FOR GENERAL NOTES, LEGEND AND ABBREVIATIONS.
  - FOR SOUTHWEST ARM, SECTIONS 'A' AND 'A (SIM)' ARE MIRRORED ABOUT THE BEAM TUBE CENTERLINE.
  - SECONDARY CONDUIT DIRECTION SHALL FACE END STATION, AS APPROPRIATE.
  - CONDUITS SHALL EXTEND TOWARD BUILDING VIA DUCT BANK, DETAIL 4, THIS SHEET.
  - BITUMINOUS SURFACE TREATMENT TO BE APPLIED WHEN SCHEDULED BY THE CONSTRUCTION MANAGER.



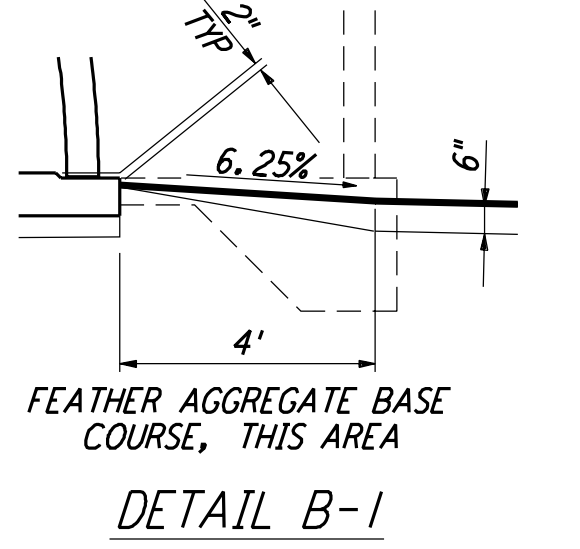
ID	d(MIN)
27" & SMALLER	3"

**TRENCH BEDDING**  
 NOT TO SCALE

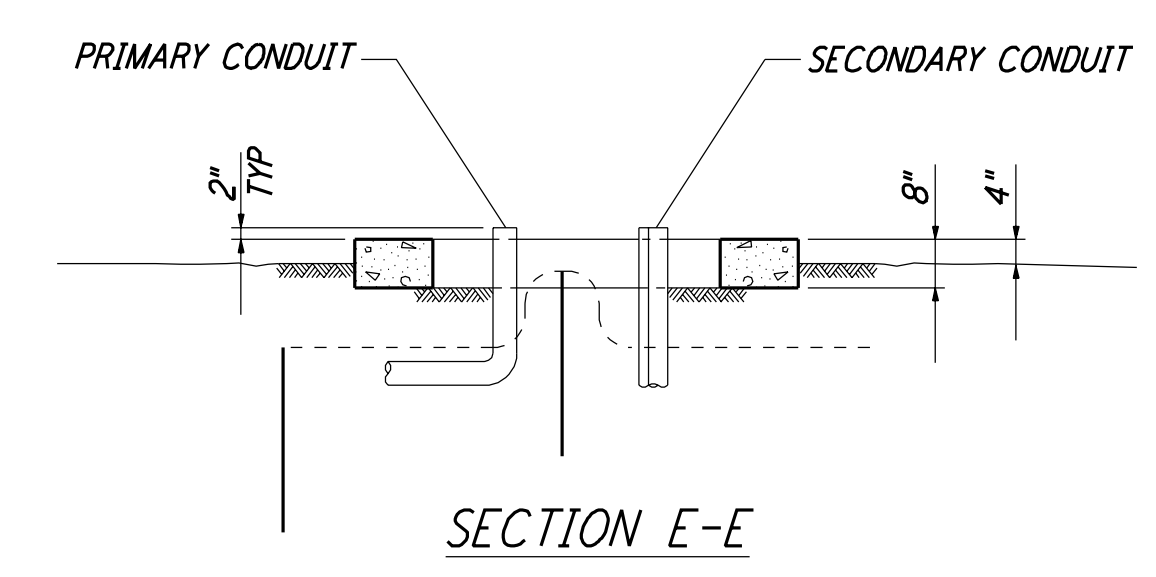
<b>LA-C-505</b>	LA-C-511 THRU LA-C-514 LA-C-516 THRU LA-C-519 LA-C-531 THRU LA-C-534 LA-C-536 THRU LA-C-539
-----------------	--



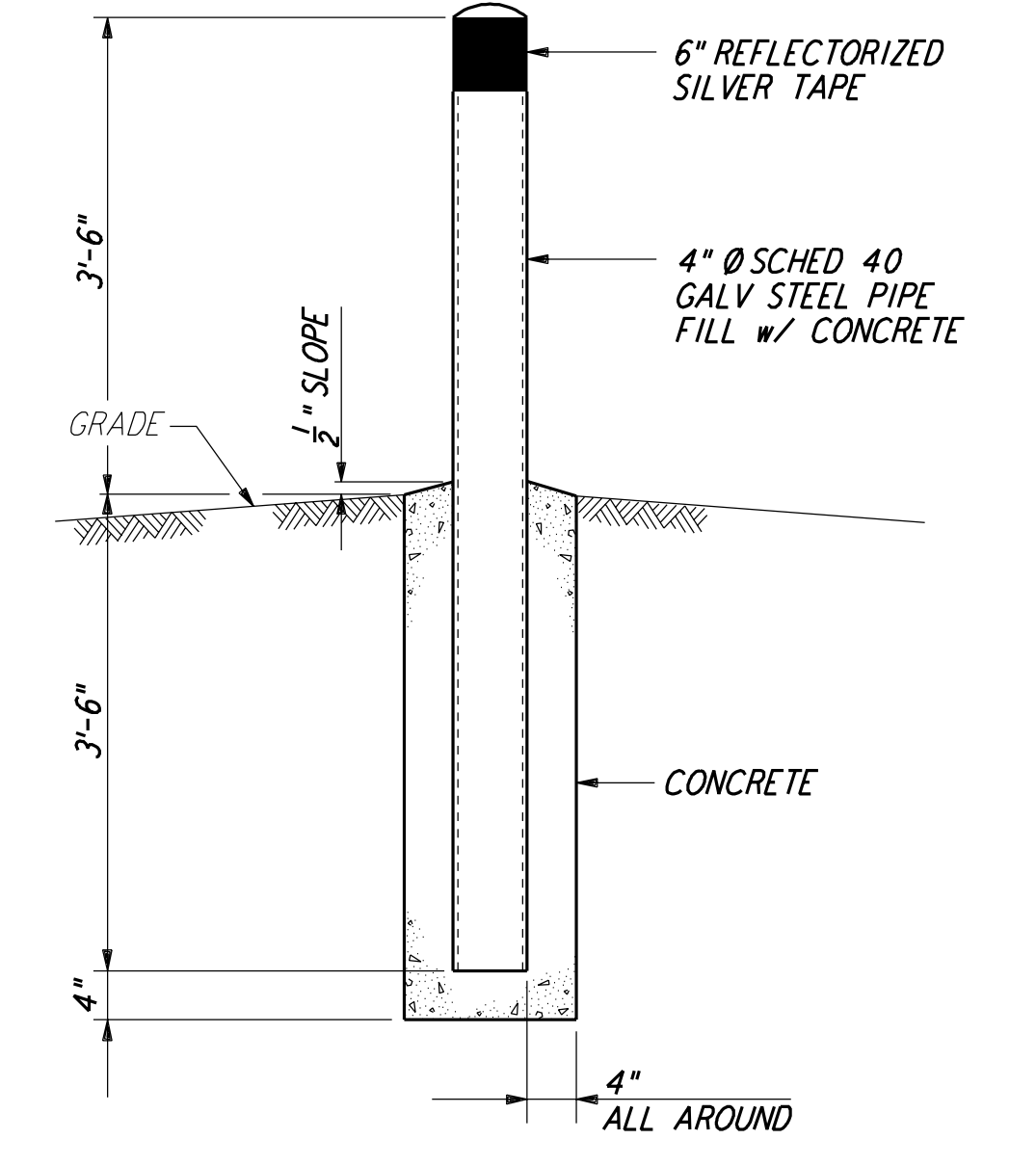
**TYPICAL LOCATION PLAN FOR ELECTRICAL TRANSFORMER PAD**  
 NOT TO SCALE



**DETAIL B-1**



**SECTION E-E**



**GUARD POST**  
 NOT TO SCALE

NO.	DATE	BY	CHKD	ENGR	PROJ	DESCRIPTION
1	3-20-97	WRB				REVISED STATIONS - SECTION A

ISSUED FOR CONSTRUCTION		
DRAWN	WRB	11-15-96
CHECKED	ML	11-15-96
ENGINEER	JB	11-15-96
PROJ	TDM	11-15-96



100 WEST WALNUT STREET  
 PASADENA, CALIFORNIA



CALIFORNIA INSTITUTE OF TECHNOLOGY  
 MASSACHUSETTS INSTITUTE OF TECHNOLOGY

LASER INTERFEROMETER GRAVITATIONAL-WAVE OBSERVATORY BEAM TUBE ENCLOSURE - LIVINGSTON, LA			
TITLE	SCALE	CONTRACT NUMBER	PROJECT NUMBER
CIVIL TYPICAL SECTIONS AND DETAILS	NONE	PP150969	8094
SHEET NUMBER		REVISIONS	
LA-C-504			

LIGO-D961261-00-O

*Note 1, LIGO, 04/08/99 10:19:14 PM*  
LIGO-D961261-00-O