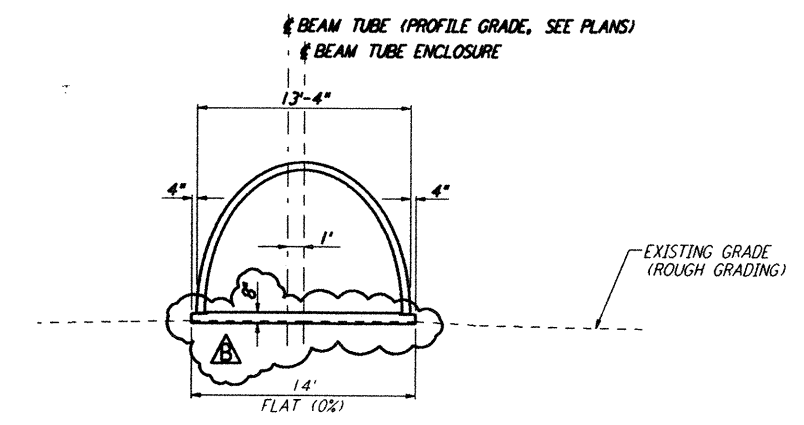


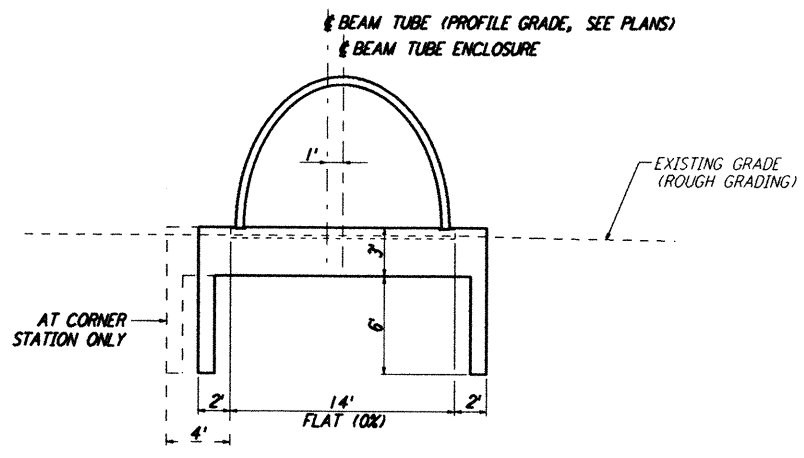
Mon Sep 09 19:09:27 1996 s3-v18b2 J:\PLOTS\VOUQUES\W18B2\CE504A.PRF
 This document and the design it covers are the property of PARSONS. They are loaned only with the borrower's expressed written agreement that they will not be reproduced, copied, loaned, exhibited, or used in any other way, except by written consent from PARSONS to the borrower.



SECTION A
 NOT TO SCALE
 REF: LA-C-505, LA-C-511, LA-C-515, LA-C-520, LA-C-531, LA-C-535, LA-C-540

SOUTHWEST ARM: STA 1+72.48 THRU STA 5+84.85
 STA 64+90.37 THRU STA 66+02.66
 STA 66+31.83 THRU STA 67+11.70
 STA 128+56.67 THRU STA 130+64.05

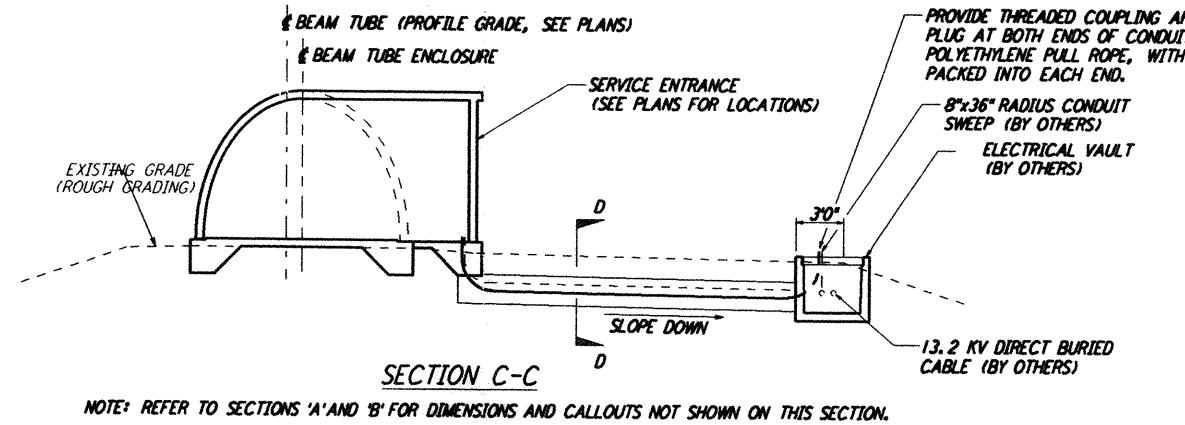
SOUTHEAST ARM: STA 1+72.48 THRU STA 4+54.37
 STA 64+90.37 THRU STA 66+02.66
 STA 66+31.83 THRU STA 67+11.70
 STA 128+56.67 THRU STA 130+64.05



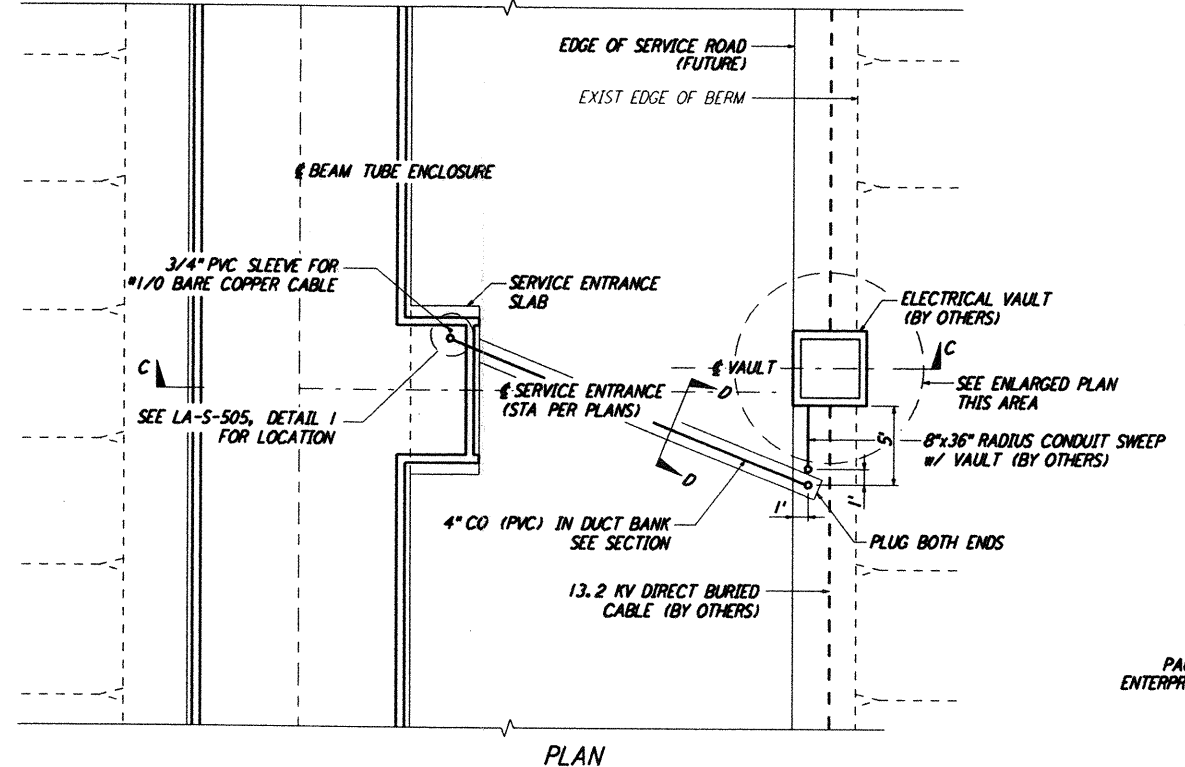
SECTION A (SIM)
 NOT TO SCALE
 REF: LA-C-505, LA-C-511, LA-C-520, LA-C-531, LA-C-540

SOUTHWEST ARM: STA 1+47.48 THRU STA 1+72.48
 STA 130+64.05 THRU STA 130+89.05

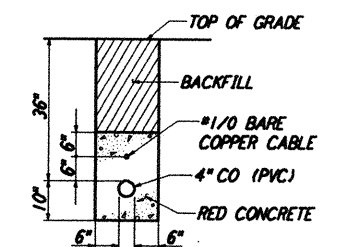
SOUTHEAST ARM: STA 1+47.48 THRU STA 1+72.48
 STA 130+64.05 THRU STA 130+89.05



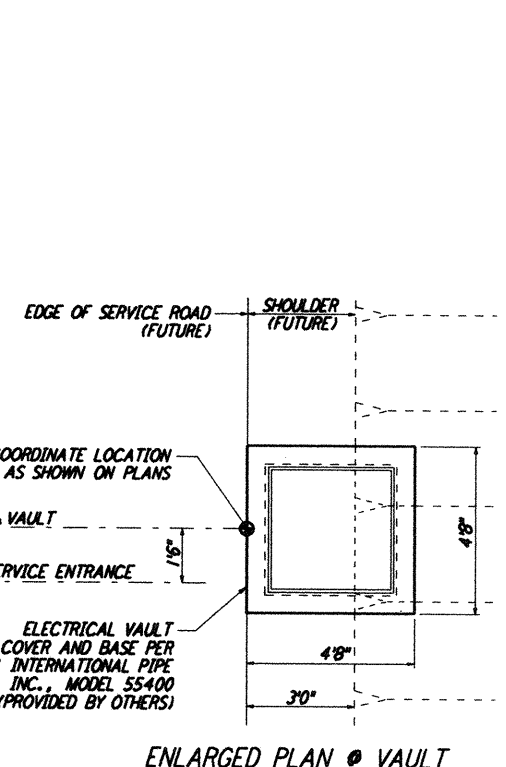
SECTION C-C
 NOTE: REFER TO SECTIONS 'A' AND 'B' FOR DIMENSIONS AND CALLOUTS NOT SHOWN ON THIS SECTION.



TYPICAL LOCATION PLAN @ SERVICE ENTRANCE FOR ELECTRICAL VAULT
 NOT TO SCALE

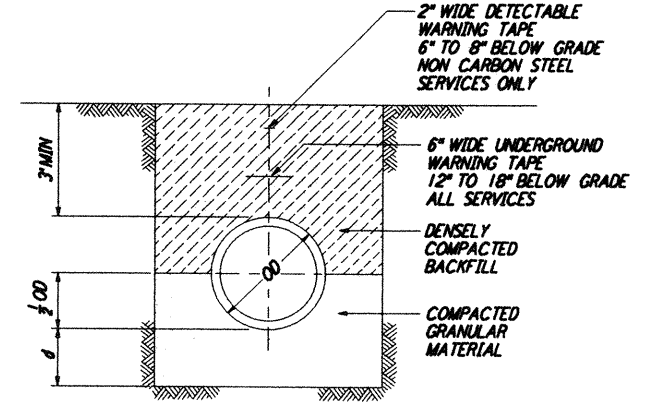


SECTION D-D



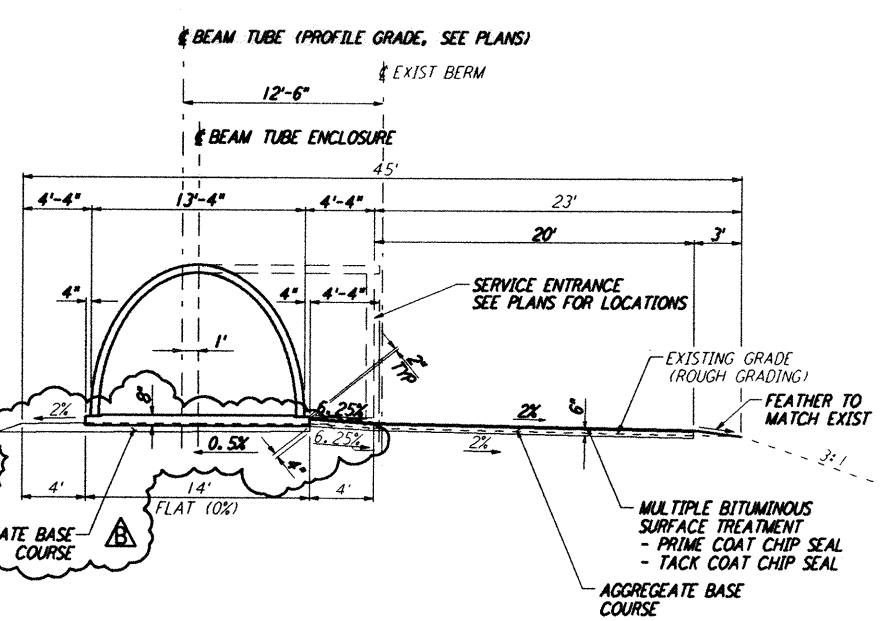
ENLARGED PLAN @ VAULT

- NOTES:**
- SEE SHEET LA-C-502 FOR GENERAL NOTES, LEGEND AND ABBREVIATIONS.
 - FOR SOUTHEAST ARM, SECTIONS 'A' AND 'A (SIM)' ARE MIRRORED ABOUT THE BEAM TUBE CENTERLINE.
 - SECONDARY CONDUIT DIRECTION SHALL FACE END STATION, AS APPROPRIATE.
 - CONDUITS SHALL EXTEND TOWARD BUILDING VIA DUCT BANK, DETAIL 4, THIS SHEET.



DEPTH OF BEDDING MATERIAL BELOW PIPE	
ID	MIN
27" & SMALLER	3"

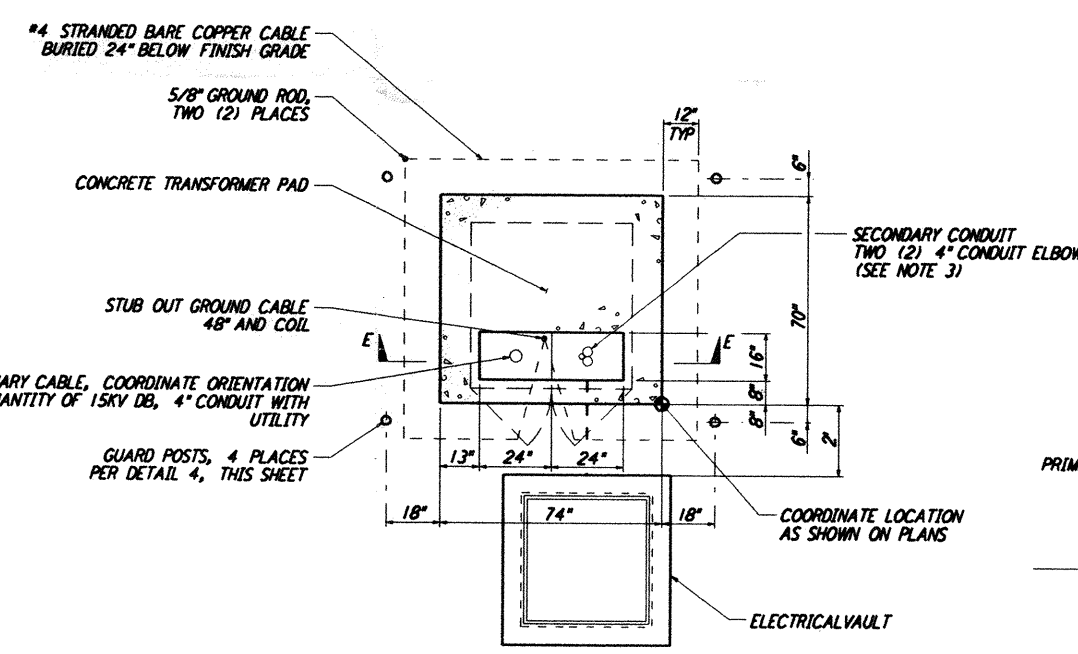
TRENCH BEDDING
 NOT TO SCALE
 REF: LA-C-505, LA-C-511, LA-C-531



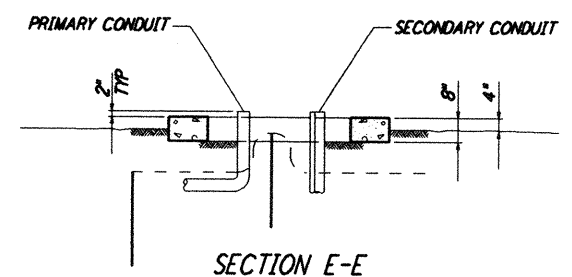
SECTION B
 NOT TO SCALE
 REF: LA-C-505, LA-C-511 THRU LA-C-520, LA-C-531 THRU LA-C-540

SOUTHWEST ARM: STA 5+84.85 THRU STA 64+90.37
 STA 67+11.70 THRU STA 128+56.67

SOUTHEAST ARM: STA 4+54.37 THRU STA 64+90.37
 STA 67+11.70 THRU STA 128+56.67

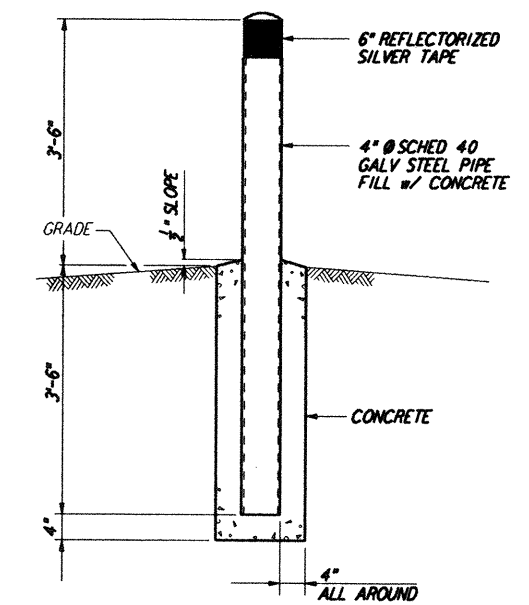


TYPICAL LOCATION PLAN FOR ELECTRICAL TRANSFORMER PAD
 NOT TO SCALE



SECTION E-E

(@ END STATIONS ONLY)
 REF: LA-C-504, LA-C-520, LA-C-521, LA-C-540, LA-C-541



GUARD POST
 NOT TO SCALE
 REF: LA-C-504

NO.	DATE	BY	CHK'D	ENGR	PROJ.	DESCRIPTION
B	9/10/96	WRB	ML	JB	TM	BID ADDENDUM NO. 2
A	6/28/96	WRB	ML	JB	TM	FINAL DESIGN REVIEW

DRAWN	WRB	6/24/96
CHECKED		
ENGINEER		
PROJ		

PARSONS
 100 WEST WALNUT STREET
 PASADENA, CALIFORNIA

LIGO
 CALIFORNIA INSTITUTE OF TECHNOLOGY
 MASSACHUSETTS INSTITUTE OF TECHNOLOGY

LASER INTERFEROMETER
 GRAVITATIONAL-WAVE OBSERVATORY
 BEAM TUBE ENCLOSURE - LIVINGSTON, LA

TITLE	SCALE	CONTIN. NUMBER	PROJECT NUMBER
CIVIL TYPICAL SECTIONS AND DETAILS	NONE	PP150969	8094
SHEET NUMBER			REVISED
LA-C-504			