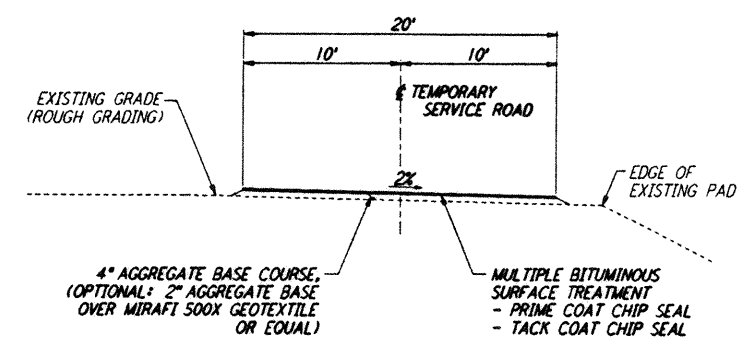
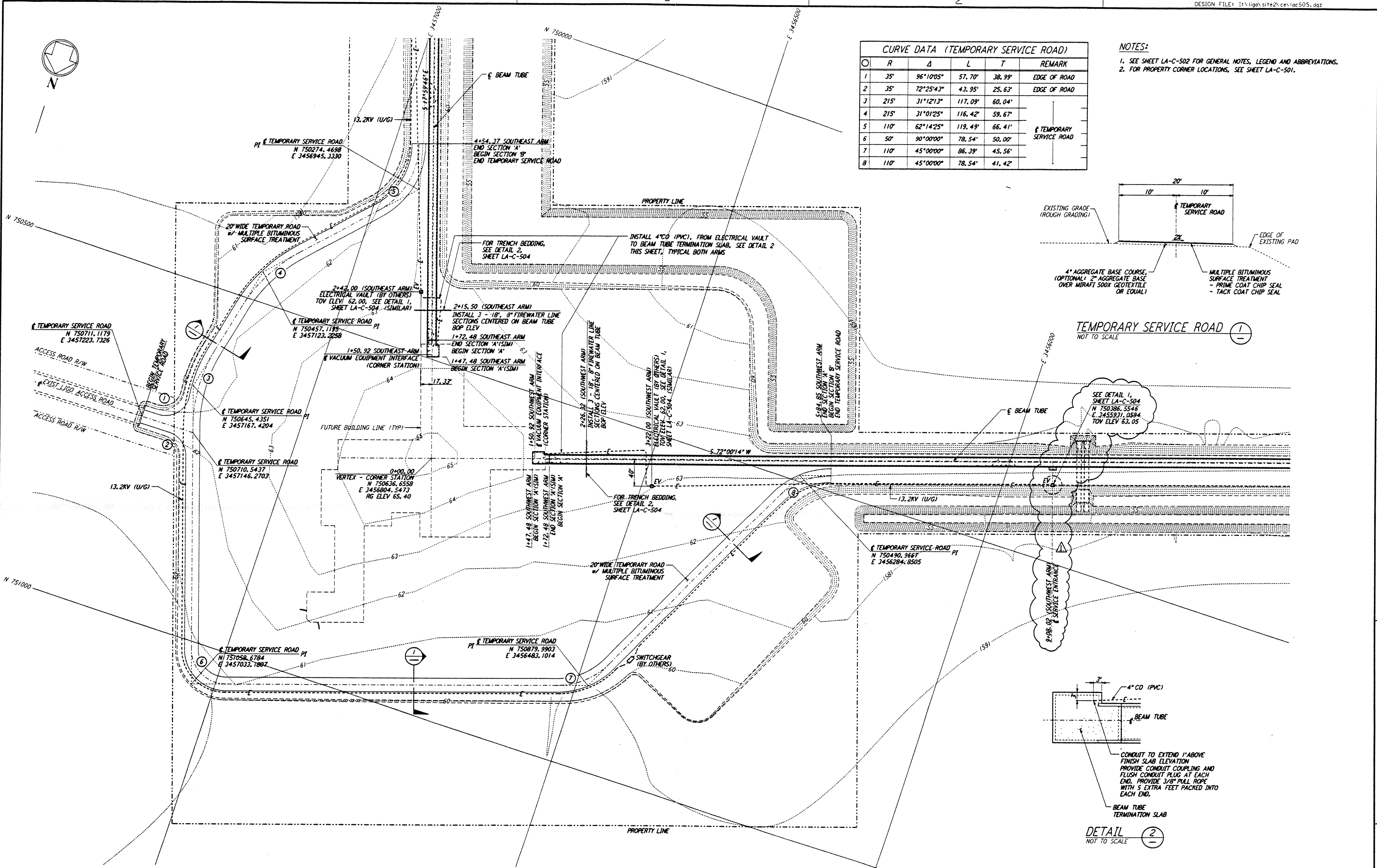


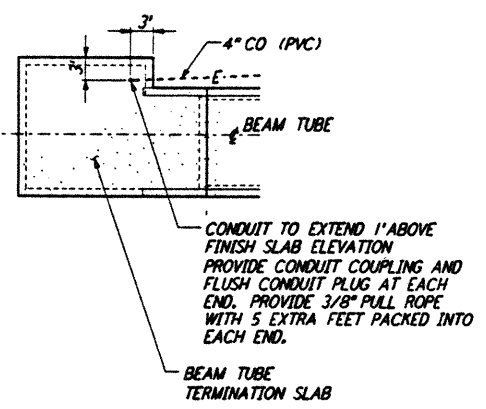


CURVE DATA (TEMPORARY SERVICE ROAD)					
Ø	R	Δ	L	T	REMARK
1	35'	96°10'05"	57.70'	38.99'	EDGE OF ROAD
2	35'	72°25'43"	43.95'	25.63'	EDGE OF ROAD
3	215'	31°12'13"	117.09'	60.04'	
4	215'	31°01'25"	116.42'	59.67'	
5	110'	62°14'25"	119.49'	66.41'	TEMPORARY SERVICE ROAD
6	50'	90°00'00"	78.54'	50.00'	
7	110'	45°00'00"	86.39'	45.56'	
8	110'	45°00'00"	78.54'	41.42'	

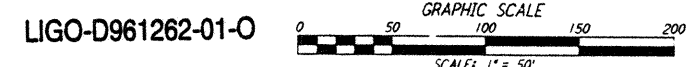
- NOTES:**
- SEE SHEET LA-C-502 FOR GENERAL NOTES, LEGEND AND ABBREVIATIONS.
 - FOR PROPERTY CORNER LOCATIONS, SEE SHEET LA-C-501.



TEMPORARY SERVICE ROAD
 NOT TO SCALE



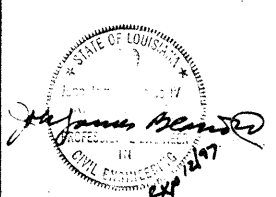
DETAIL 2
 NOT TO SCALE



This document and the design it covers are the property of PARSONS. They are loaned only with the borrower's expressed written agreement that they will not be reproduced, copied, loaned, exhibited, or used in any other way, except by written consent from PARSONS to the borrower.

NO.	DATE	BY	CHKD	ENGR	PROJ	DESCRIPTION
1	2-3-97	WRB	CL	JB	TDM	REVISED SERVICE ENTRANCE, ELEC VAULT

ISSUED FOR CONSTRUCTION	WRB	11-15-96
CHECKED	ML	11-15-96
ENGINEER	JB	11-15-96
PROJ	TDM	11-15-96



PARSONS
 100 WEST WALNUT STREET
 PASADENA, CALIFORNIA

LIGO
 CALIFORNIA INSTITUTE OF TECHNOLOGY
 MASSACHUSETTS INSTITUTE OF TECHNOLOGY

CIVIL CORNER STATION PLAN
 LASER INTERFEROMETER GRAVITATIONAL-WAVE OBSERVATORY
 BEAM TUBE ENCLOSURE - LIVINGSTON, LA

SHEET NUMBER: **LA-C-505**