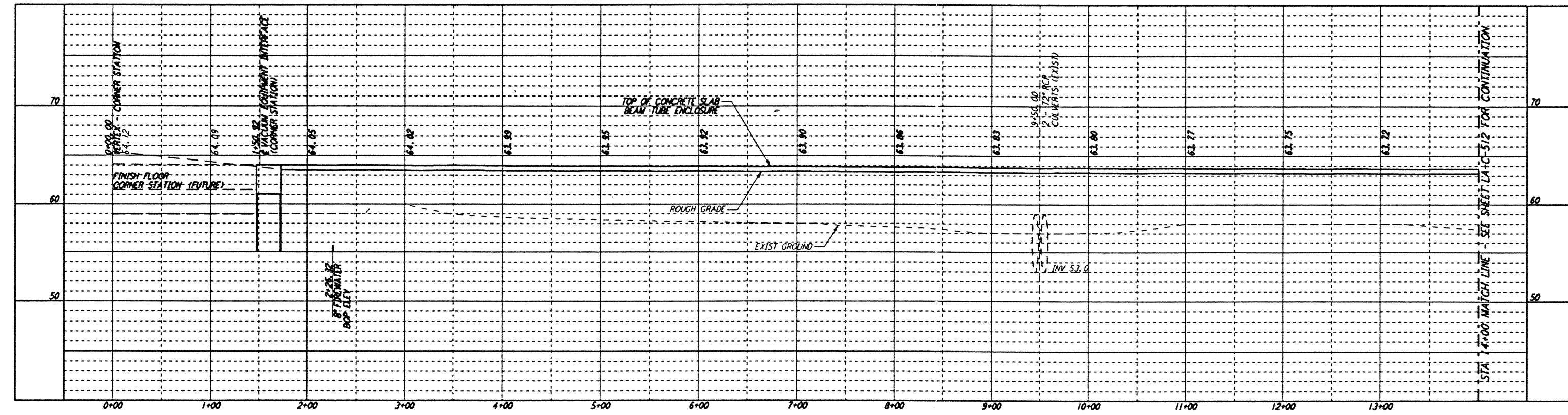


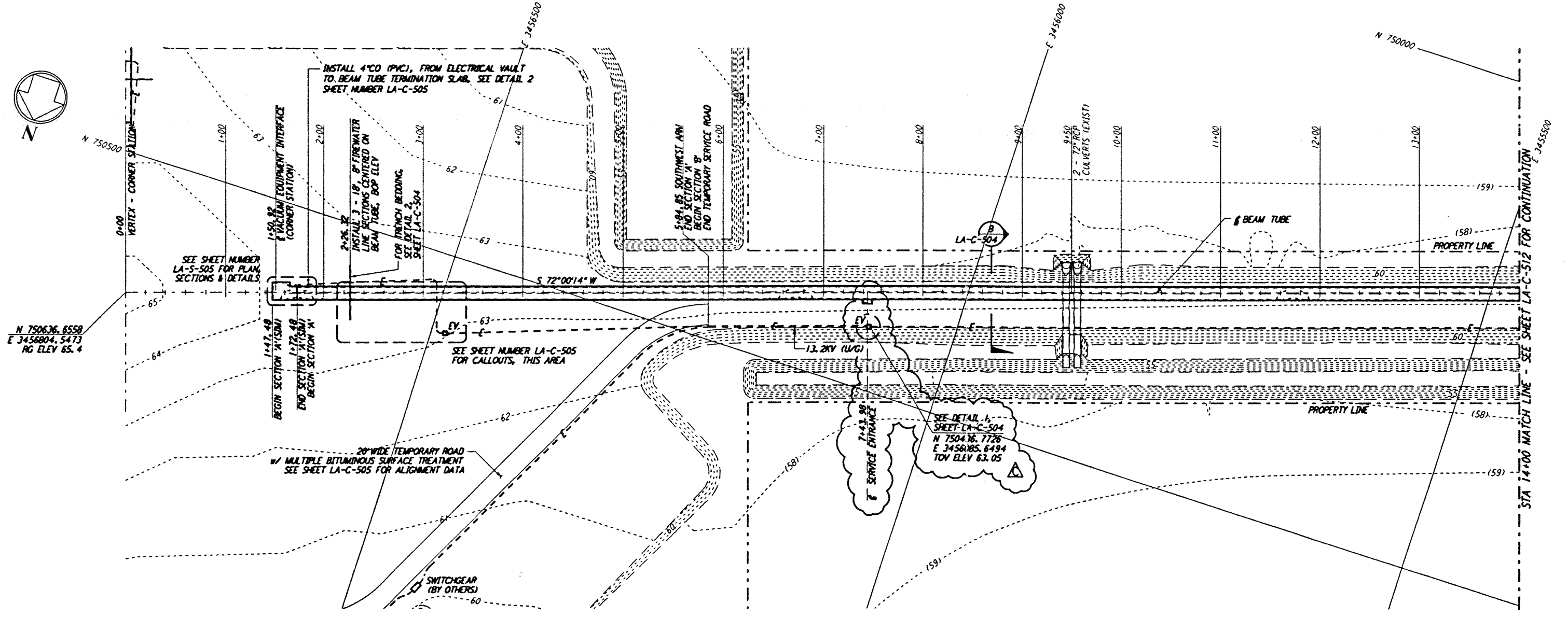
Mon Sep 30 05:31:22 1996 s3-v18b2 J:\PI\015\N\FILES\18R2\CF511A.PRF

DATE: 09/30/96 TIME: 05:32:54
 DESIGN FILE: I:\ligo\site2\ce\lloc511.dwg

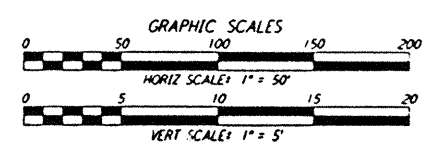
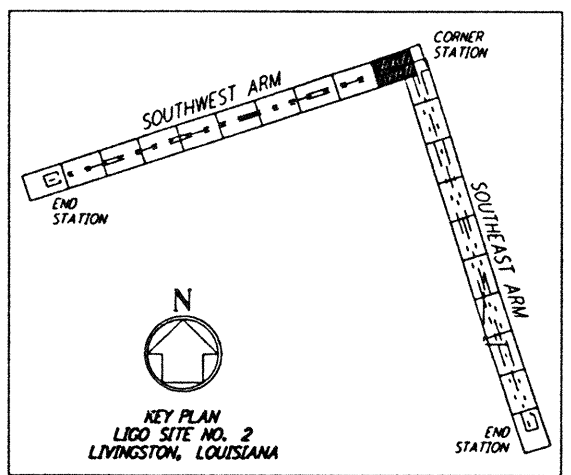
NOTES:
 1. SEE SHEET LA-C-502 FOR GENERAL NOTES, LEGEND AND ABBREVIATIONS.
 2. SEE SHEET LA-C-504 FOR TYPICAL SECTIONS AND DETAILS.



PROFILE
 SCALES: HORIZ: 1" = 50'
 VERT: 1" = 5'



PLAN
 SCALE: 1" = 50'



NO.	DATE	BY	CHKD	ENGR	PROJ	DESCRIPTION
C	9/27/96	WRB	ML	JB	TDM	BID ADDENDUM NO. 3
B	9/10/96	WRB	ML	JB	TDM	BID ADDENDUM NO. 2
A	6/28/96	WRB	ML	JB	TDM	FINAL DESIGN REVIEW

DRAWN	WRB	6/24/96
CHECKED		
ENGINEER		
PROJ		

PARSONS
 100 WEST WALNUT STREET
 PASADENA, CALIFORNIA

LIGO
 CALIFORNIA INSTITUTE OF TECHNOLOGY
 MASSACHUSETTS INSTITUTE OF TECHNOLOGY

LASER INTERFEROMETER
 GRAVITATIONAL-WAVE OBSERVATORY
 BEAM TUBE ENCLOSURE - LIVINGSTON, LA

TITLE: CIVIL
 SCALE: AS NOTED
 CONTRACT NUMBER: P150969
 PROJECT NUMBER: 8094

STA 0+00 TO STA 14+00
LA-C-511

LIGO-D961263-C-01

LIGOLF3.BOR

This document and the design it covers are the property of PARSONS. They are loaned only with the borrower's expressed written agreement that they will not be reproduced, copied, loaned, exhibited, or used in any other way, except by written consent from PARSONS to the borrower.