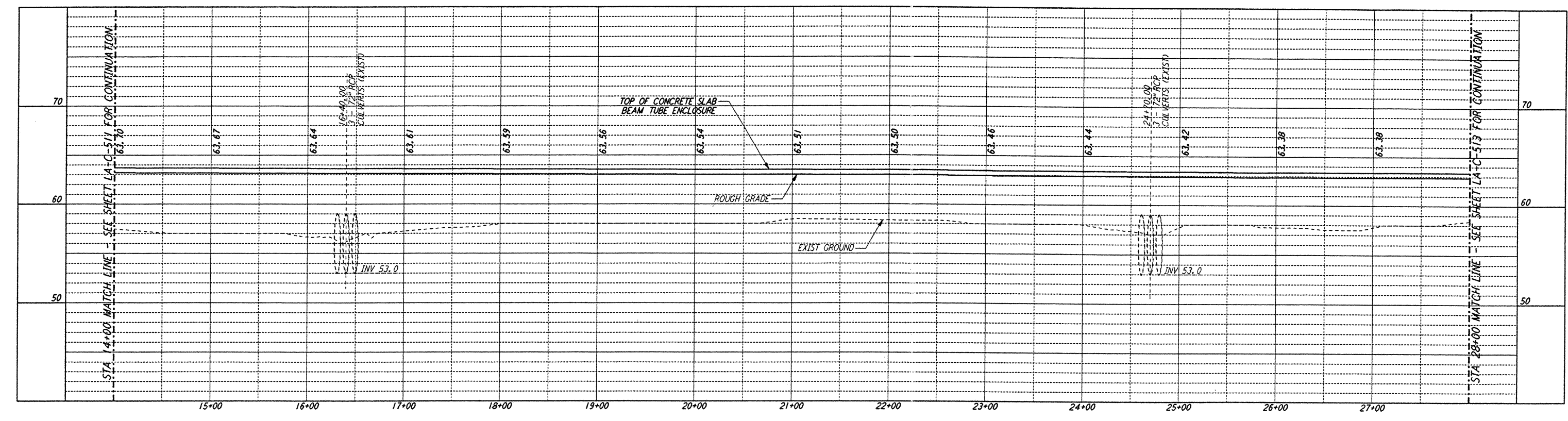
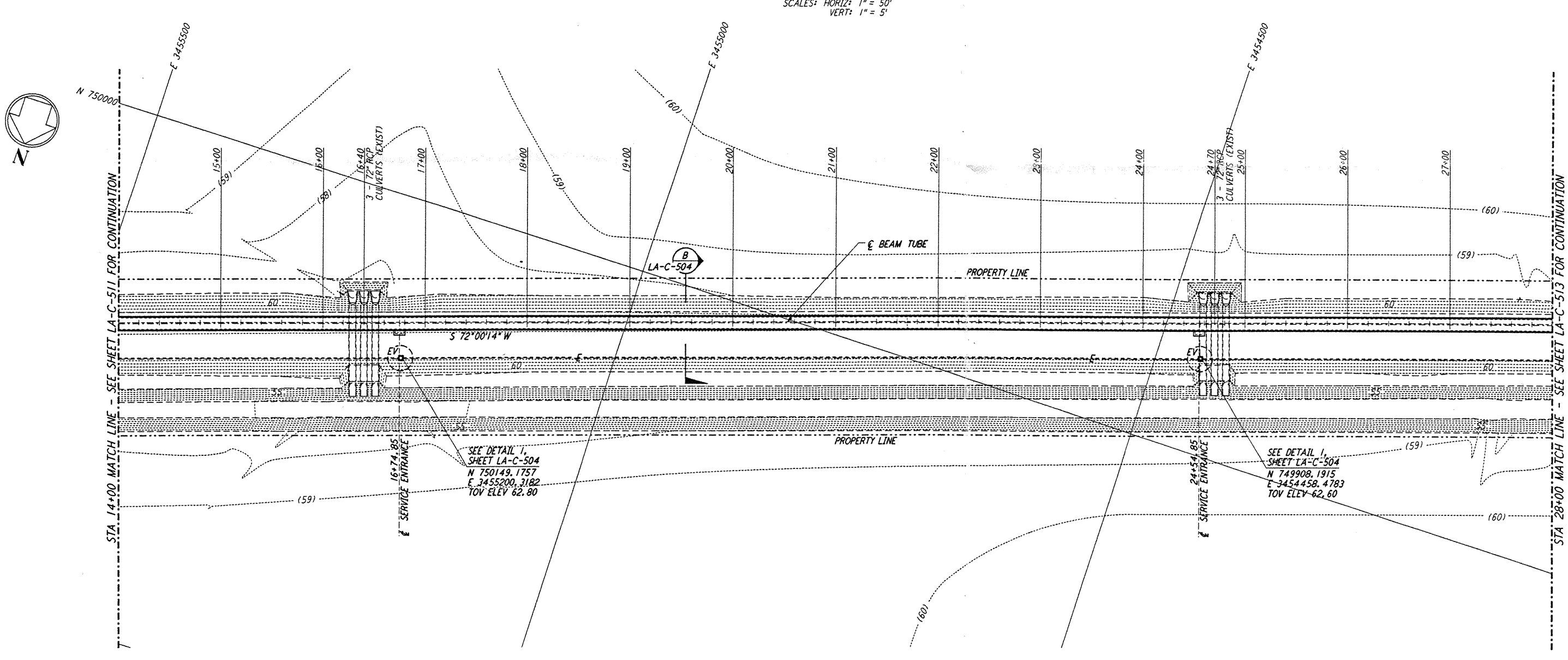


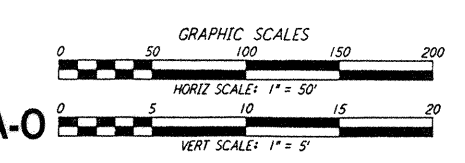
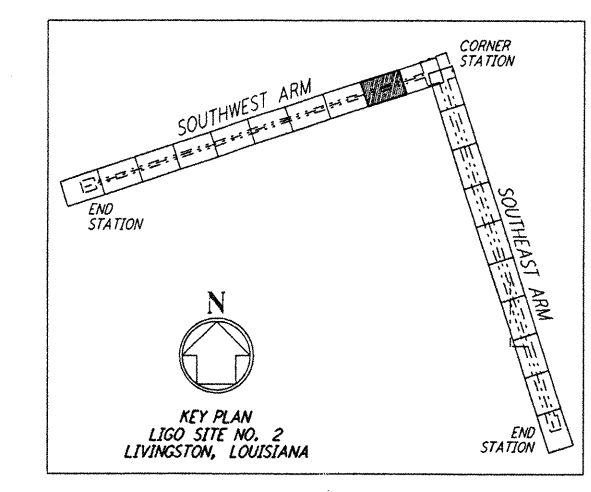
- NOTES:**
- SEE SHEET LA-C-502 FOR GENERAL NOTES, LEGEND AND ABBREVIATIONS.
  - SEE SHEET LA-C-504 FOR TYPICAL SECTIONS AND DETAILS.



**PROFILE**  
 SCALES: HORIZ: 1" = 50'  
 VERT: 1" = 5'



**PLAN**  
 SCALE: 1" = 50'



LIGO-D961264-A-O

REVISED	NO.	DATE	BY	CHKD	ENGR	PROJ	DESCRIPTION
A	6/28/96	WRB	MW				FINAL DESIGN REVIEW

DRAWN	WRB	6/24/96
CHECKED		
ENGINEER		
PROJ		

**PARSONS**  
 100 WEST WALNUT STREET  
 PASADENA, CALIFORNIA

**LIGO**  
 CALIFORNIA INSTITUTE OF TECHNOLOGY  
 MASSACHUSETTS INSTITUTE OF TECHNOLOGY

LASER INTERFEROMETER  
 GRAVITATIONAL-WAVE OBSERVATORY  
 BTE SITWORK & FABRICATION - LIVINGSTON, LA

TITLE: CIVIL  
 SOUTHWEST ARM  
 PLAN AND PROFILE  
 STA 14+00 TO STA 28+00

SCALE: AS NOTED  
 CONTRACT NUMBER: PPI50969  
 PROJECT NUMBER: 8094

SHEET NUMBER: **LA-C-512**

LIGO-D961-A-O

This document and the design it covers are the property of PARSONS. They are loaned only with the borrower's expressed written agreement that they will not be reproduced, copied, loaned, exhibited, or used in any other way, except by written consent from PARSONS to the borrower.

P:\LIGO\ATFE2\CE\LOC512.DWG 6/28/96 7:01:41 AM

P:\LIGO\ATFE2\CE\LOC512.DWG 6/28/96 7:01:41 AM