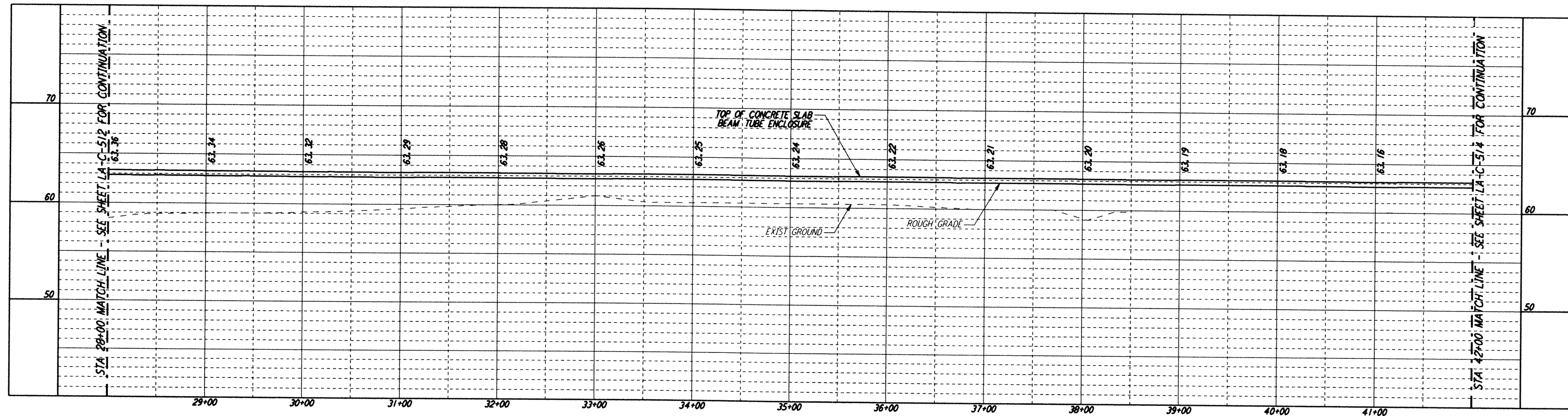


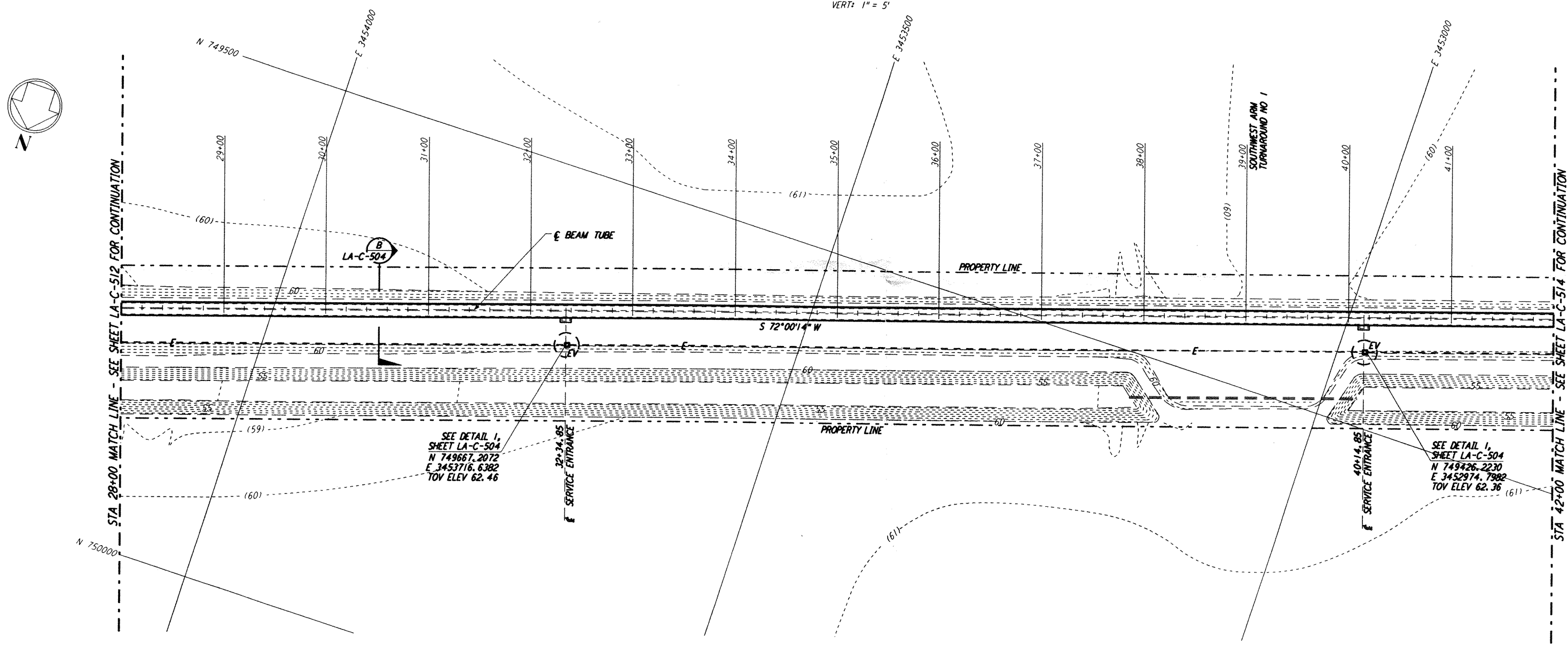
Mon Sep 09 17:05:09 1996 s3-v18b2 J:\PLOTS\QUEUES\18B2\CE513A.PRF

DATE: 09/09/96 TIME: 17:06:35
 DESIGN FILE: I:\ligo\site2\ce\lcc513.dwg

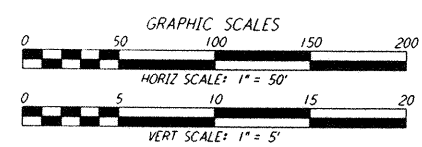
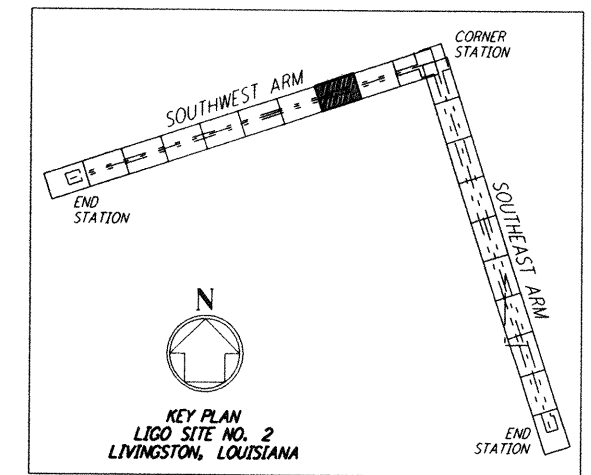


- NOTES:**
- SEE SHEET LA-C-502 FOR GENERAL NOTES, LEGEND AND ABBREVIATIONS.
 - SEE SHEET LA-C-504 FOR TYPICAL SECTIONS AND DETAILS.

PROFILE
 SCALES: HORIZ: 1" = 50'
 VERT: 1" = 5'



PLAN
 SCALE: 1" = 50'



NO.	DATE	BY	CHKD	ENGR	PROJ	DESCRIPTION
B	9/10/96	WRB	ML	JB	TOM	BID ADDENDUM NO. 2
A	6/28/96	WRB	ML	JB	TOM	FINAL DESIGN REVIEW

DRAWN	WRB	6/24/96
CHECKED		
ENGINEER		
PROJ		

PARSONS
 100 WEST WALNUT STREET
 PASADENA, CALIFORNIA

LIGO
 CALIFORNIA INSTITUTE OF TECHNOLOGY
 MASSACHUSETTS INSTITUTE OF TECHNOLOGY

LASER INTERFEROMETER
 GRAVITATIONAL-WAVE OBSERVATORY
 BEAM TUBE ENCLOSURE - LIVINGSTON, LA

CIVIL
 SOUTHWEST ARM
 PLAN AND PROFILE
 STA 28+00 TO STA 42+00

AS NOTED PPI50969 8094
LA-C-513

LIGO-D961265-B-O

LIGOLTF3.BOP