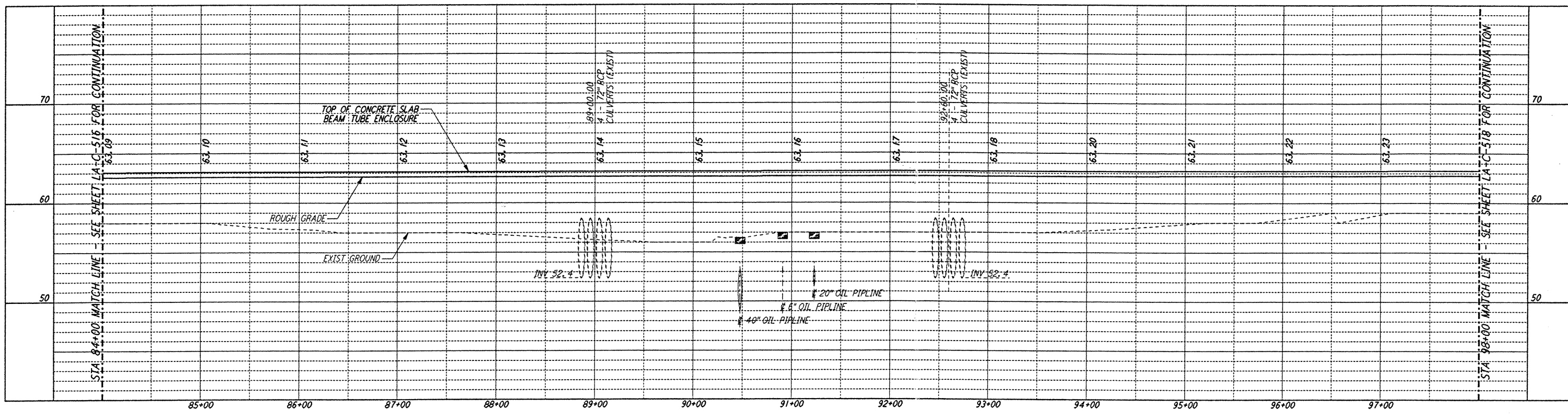
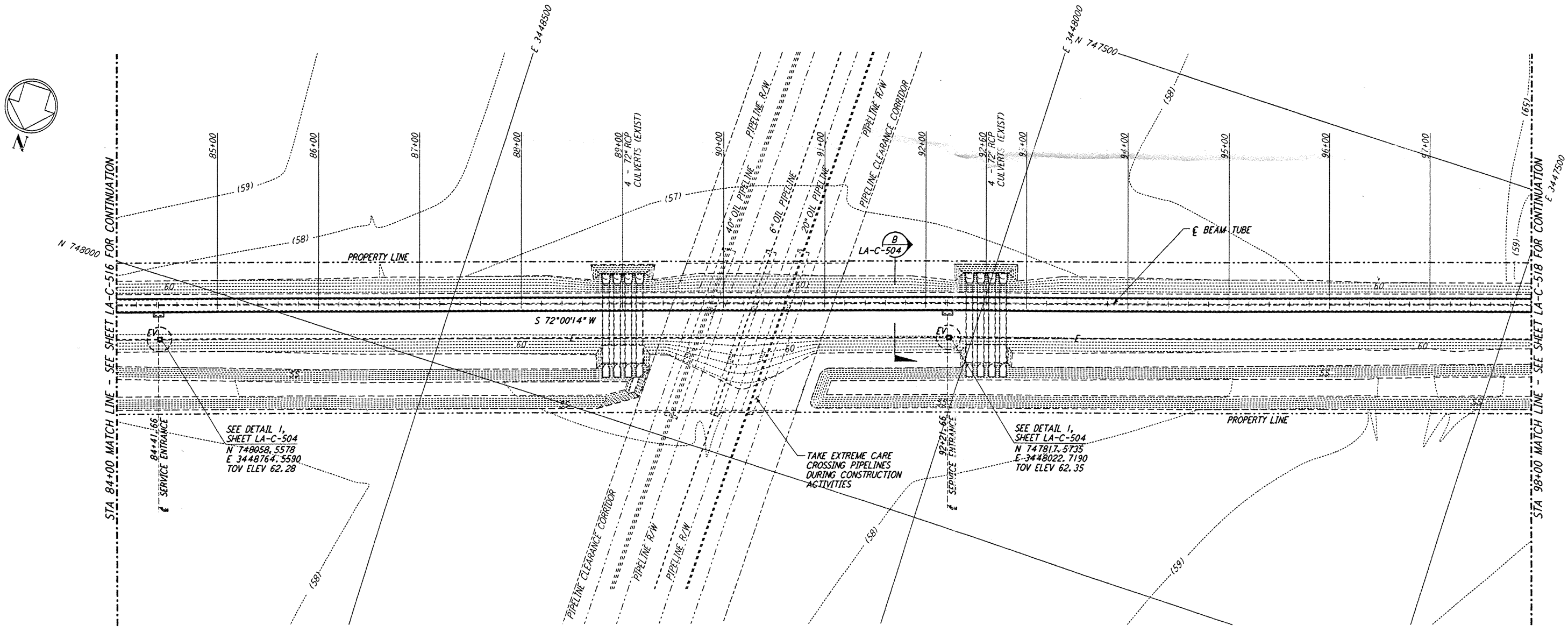


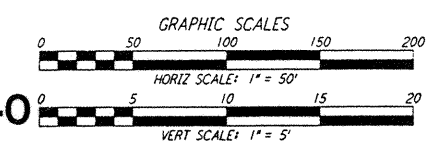
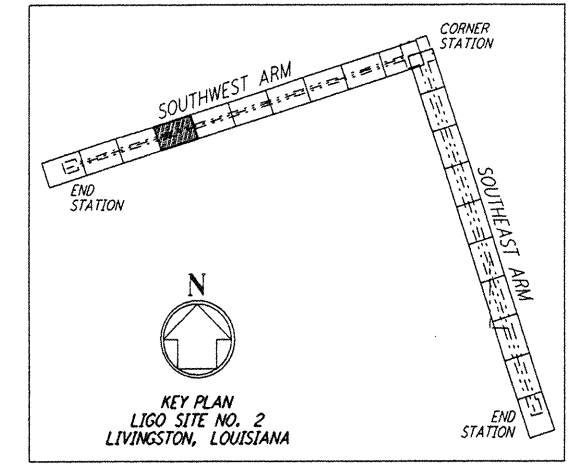
**NOTES:**  
 1. SEE SHEET LA-C-502 FOR GENERAL NOTES, LEGEND AND ABBREVIATIONS.  
 2. SEE SHEET LA-C-504 FOR TYPICAL SECTIONS AND DETAILS.



**PROFILE**  
 SCALES: HORIZ: 1" = 50'  
 VERT: 1" = 5'



**PLAN**  
 SCALE: 1" = 50'



LIGO-D961271-A-O

This document and the design it covers are the property of PARSONS. They are loaned only with the borrower's expressed written agreement that they will not be reproduced, copied, loaned, exhibited, or used in any other way, except by written consent from PARSONS to the borrower.

REFERENCES		DRAWN		CHECKED		ENGINEER		PROJ	
		WRB		6/24/96					
REVISIONS		FINAL DESIGN REVIEW							
NO.	DATE	BY	CHKD	ENGR	PROJ	DESCRIPTION			
A	6/28/96	WRB	NJC	SP	MM				

**PARSONS**  
 100 WEST WALNUT STREET  
 PASADENA, CALIFORNIA

**LIGO**  
 CALIFORNIA INSTITUTE OF TECHNOLOGY  
 MASSACHUSETTS INSTITUTE OF TECHNOLOGY

LASER INTERFEROMETER  
 GRAVITATIONAL-WAVE OBSERVATORY  
 BTE SITEWORK & FABRICATION - LIVINGSTON, LA

CIVIL  
 SOUTHWEST ARM  
 PLAN AND PROFILE  
 STA 84+00 TO STA 98+00

SCALE: 1" = 50'  
 SHEET NUMBER: PP150969  
 PROJECT NUMBER: 8094

**LA-C-517**

LIGO-D961271-A-O