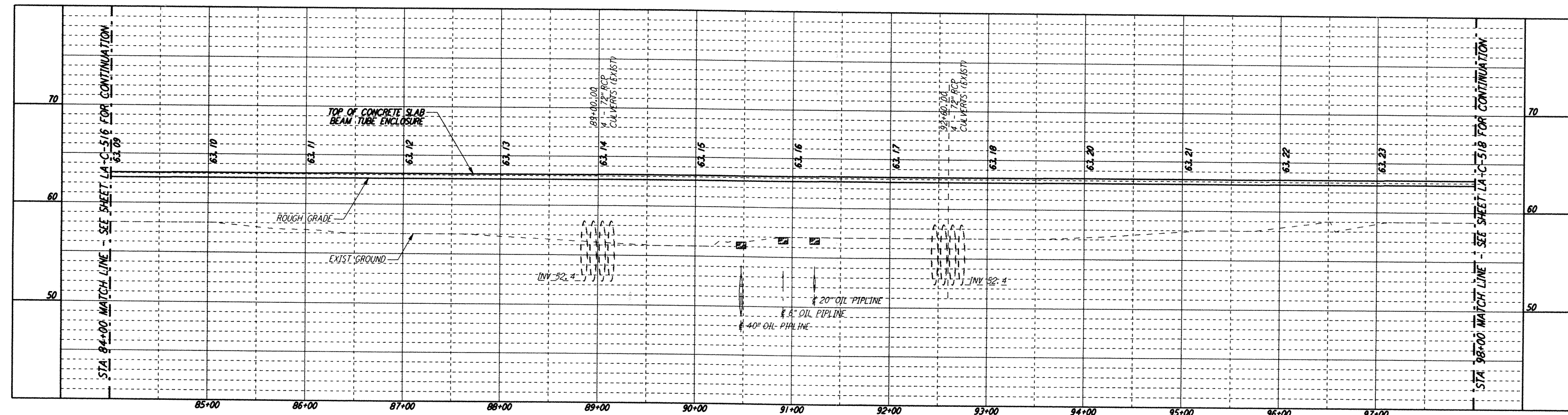
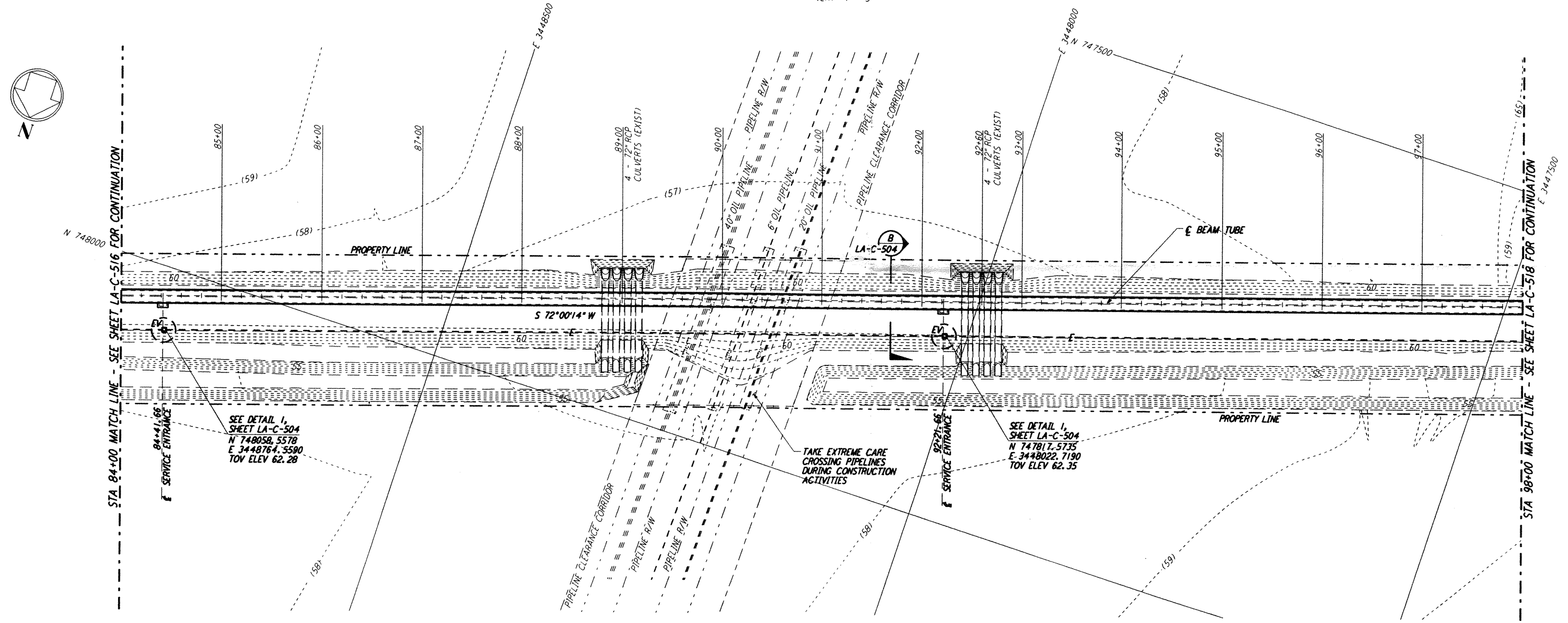


- NOTES:**
- SEE SHEET LA-C-502 FOR GENERAL NOTES, LEGEND AND ABBREVIATIONS.
 - SEE SHEET LA-C-504 FOR TYPICAL SECTIONS AND DETAILS.

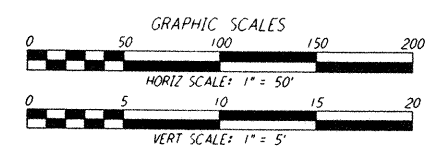
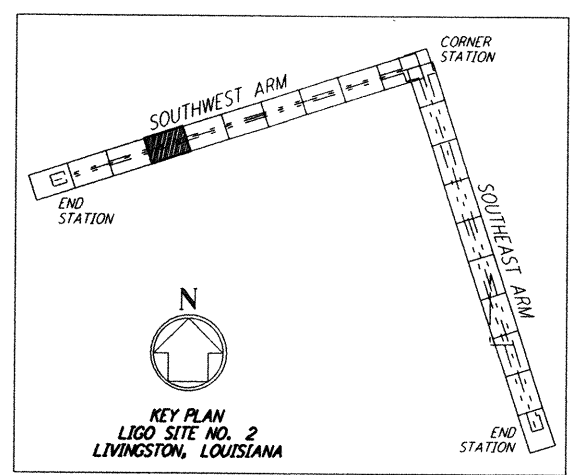


PROFILE
 SCALES: HORIZ: 1" = 50'
 VERT: 1" = 5'



PLAN
 SCALE: 1" = 50'

NOTE:
 LIGO SOUTHWEST ARM CROSSING OF SHELL PIPELINE R/W OCCURS WITHIN LIVINGSTON PARRISH, LOUISIANA, TOWNSHIP 6 SOUTH - RANGE 4 EAST, SECTION 3.



Mon Sep 09 17:28:34 1996 s3-v18b2 J:\PLOTS\NQUEUES\18B2\CE517A.PRF

This document and the design it covers are the property of PARSONS. They are loaned only with the borrower's expressed written agreement that they will not be reproduced, copied, loaned, exhibited, or used in any other way, except by written consent from PARSONS to the borrower.

NO.	DATE	BY	CHKD	ENGR	PROJ	DESCRIPTION
B	9/10/96	WRB	ML	JB	ZPM	BID ADDENDUM NO. 2
A	6/28/96	WRB	ML	JB	TDM	FINAL DESIGN REVIEW

DRAWN	WRB	6/24/96
CHECKED		
ENGINEER		
PROJ		

PARSONS
 100 WEST WALNUT STREET
 PASADENA, CALIFORNIA

LIGO
 CALIFORNIA INSTITUTE OF TECHNOLOGY
 MASSACHUSETTS INSTITUTE OF TECHNOLOGY

LASER INTERFEROMETER GRAVITATIONAL-WAVE OBSERVATORY BEAM TUBE ENCLOSURE - LIVINGSTON, LA

TITLE	SCALE	CONTRACT NUMBER	PROJECT NUMBER
CIVIL SOUTHWEST ARM PLAN AND PROFILE STA 84+00 TO STA 98+00	AS NOTED	PP150969	8094
LA-C-517		REVISED	

LIGO-D961271-B-0