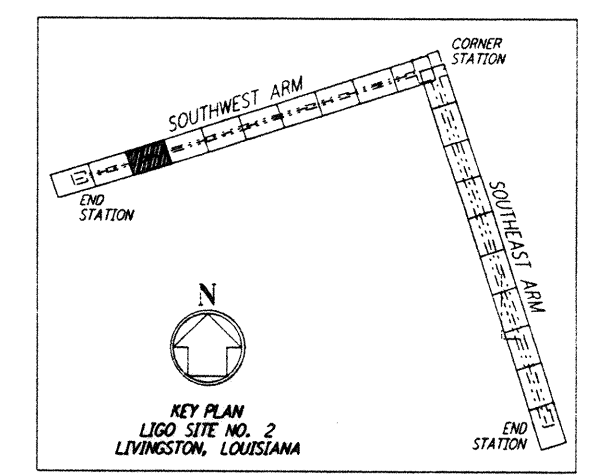
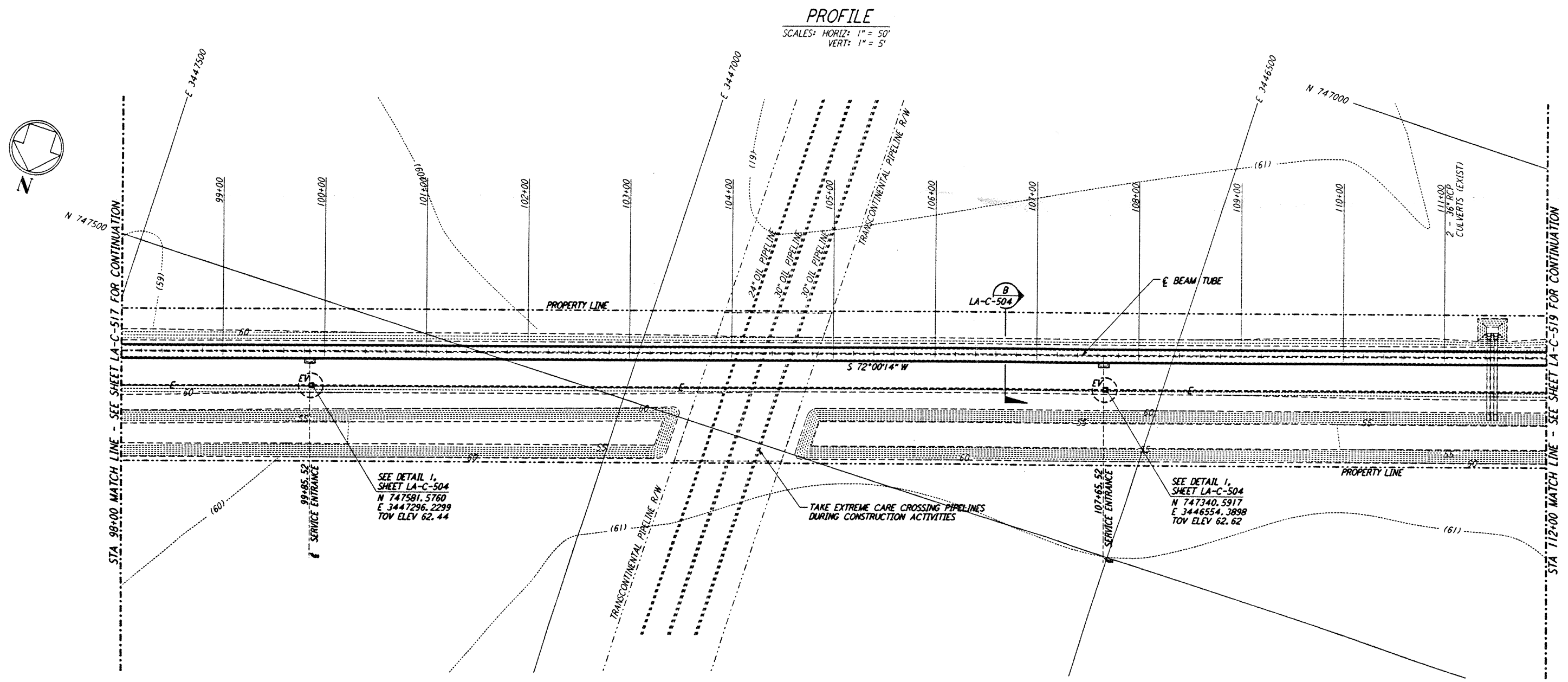
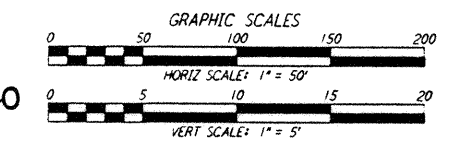


NOTES:
 1. SEE SHEET LA-C-502 FOR GENERAL NOTES, LEGEND AND ABBREVIATIONS.
 2. SEE SHEET LA-C-504 FOR TYPICAL SECTIONS AND DETAILS.



NOTE:
 LIGO SOUTHWEST ARM CROSSING OF TRANSCONTINENTAL PIPELINE R/W OCCURS WITHIN LIVINGSTON PARRISH, LOUISIANA, TOWNSHIP 6 SOUTH - RANGE 4 EAST, SECTION 4.

PLAN
 SCALE: 1" = 50'



LIGO-D961272-01-0

DRAWING NO.	DESCRIPTION

NO.	DATE	BY	CHKD	ENGR	PROJ	REVISIONS
1	2-3-97	WRB	CL	JR	TDM	REVISED PROFILE ELEVATIONS

ISSUED FOR CONSTRUCTION		
DRAWN	WRB	11-15-96
CHECKED	ML	11-15-96
ENGINEER	JB	11-15-96
PROJ	TDM	11-15-96

John J. ...
 02/13/97

PARSONS
 100 WEST WALNUT STREET
 PASADENA, CALIFORNIA

LIGO
 CALIFORNIA INSTITUTE OF TECHNOLOGY
 MASSACHUSETTS INSTITUTE OF TECHNOLOGY

LASER INTERFEROMETER
 GRAVITATIONAL-WAVE OBSERVATORY
 BEAM TUBE ENCLOSURE - LIVINGSTON, LA

TITLE: CIVIL
 SOUTHWEST ARM
 PLAN AND PROFILE
 STA 98+00 TO STA 112+00

AS NOTED PPI 50969 8094

LA-C-518

LIGO-D961272-01-0

LIGD.LF3.BOR

This document and the design it covers are the property of PARSONS. They are loaned only with the borrower's expressed written agreement that they will not be reproduced, copied, loaned, exhibited, or used in any other way, except by written consent from PARSONS to the borrower.

PORT 100 03 02/03/97 3:13:02Z J:\LIVINGSTON\LA-C-518\LA-C-518.DWG

PORT 100 03 02/03/97 3:13:02Z J:\LIVINGSTON\LA-C-518\LA-C-518.DWG