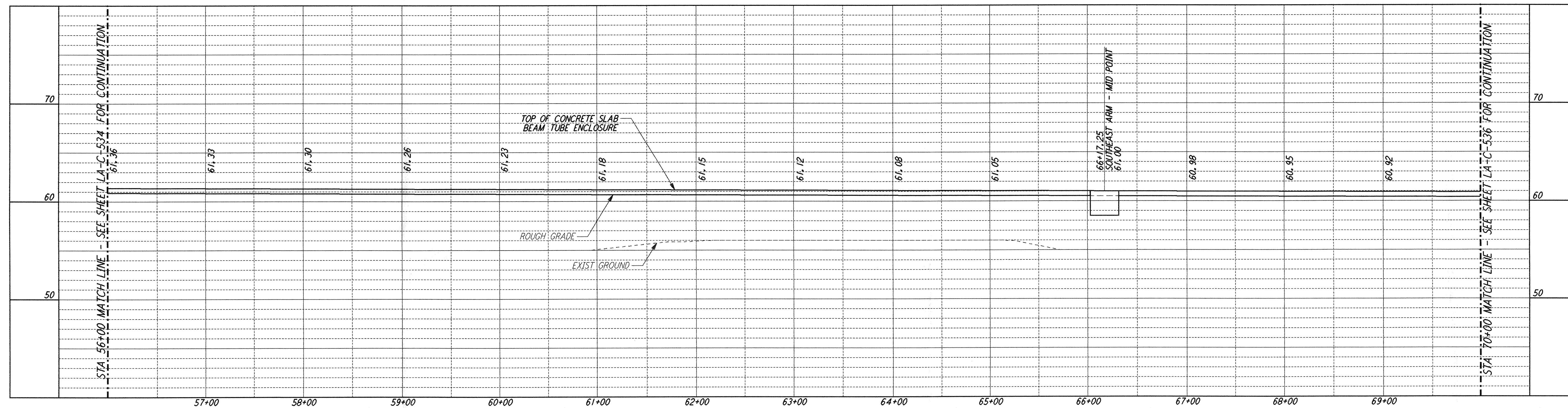


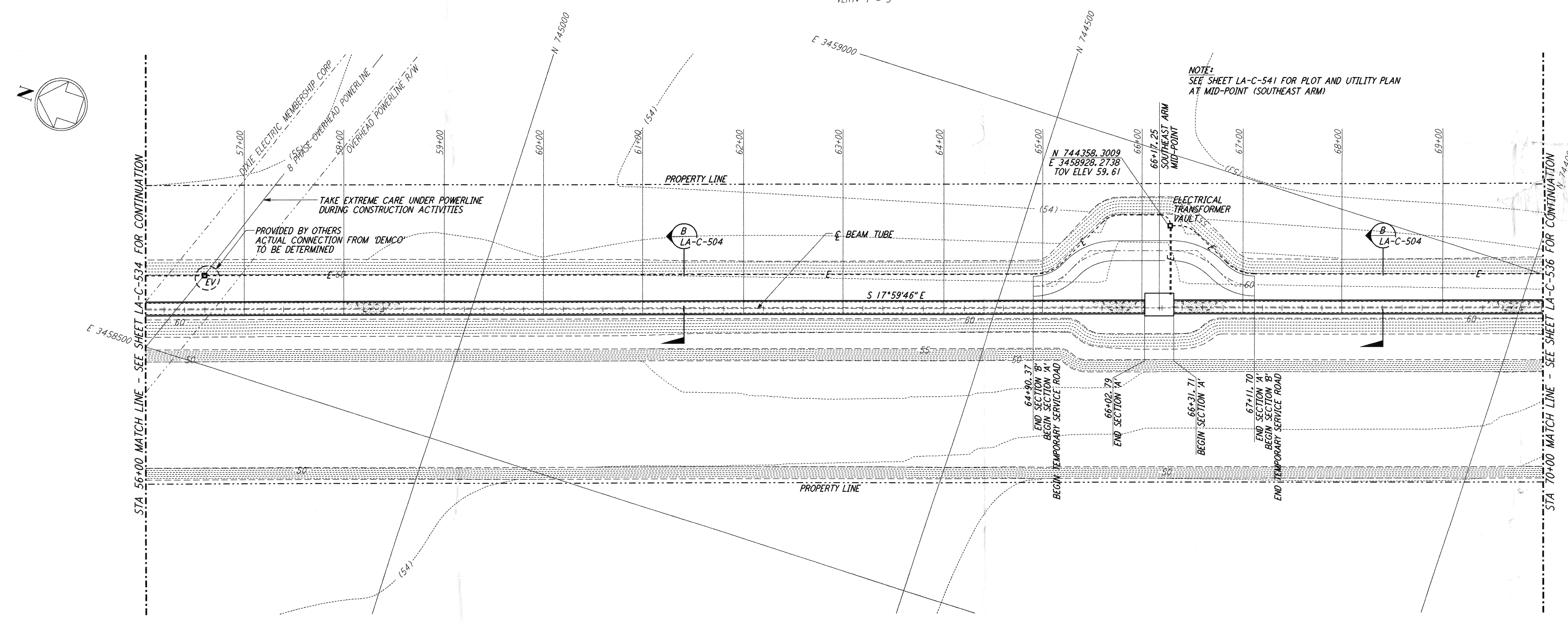
not be reproduced, copied, loaned, exhibited, or used in any other way, except by written consent from PARSONS to the borrower.

This document and the design it covers are the property of PARSONS. They are loaned only with the borrower's expressed written agreement that they will

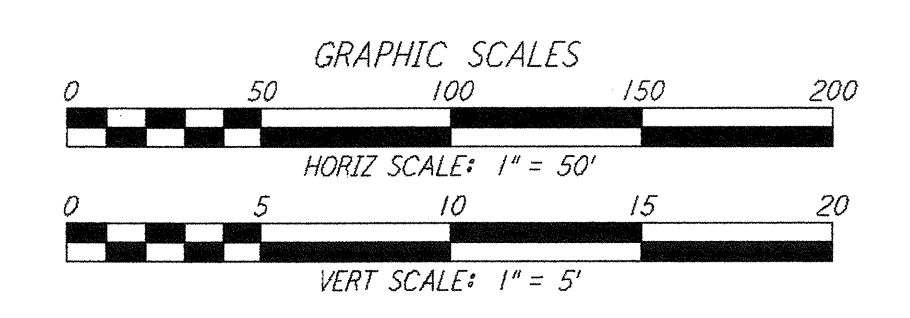
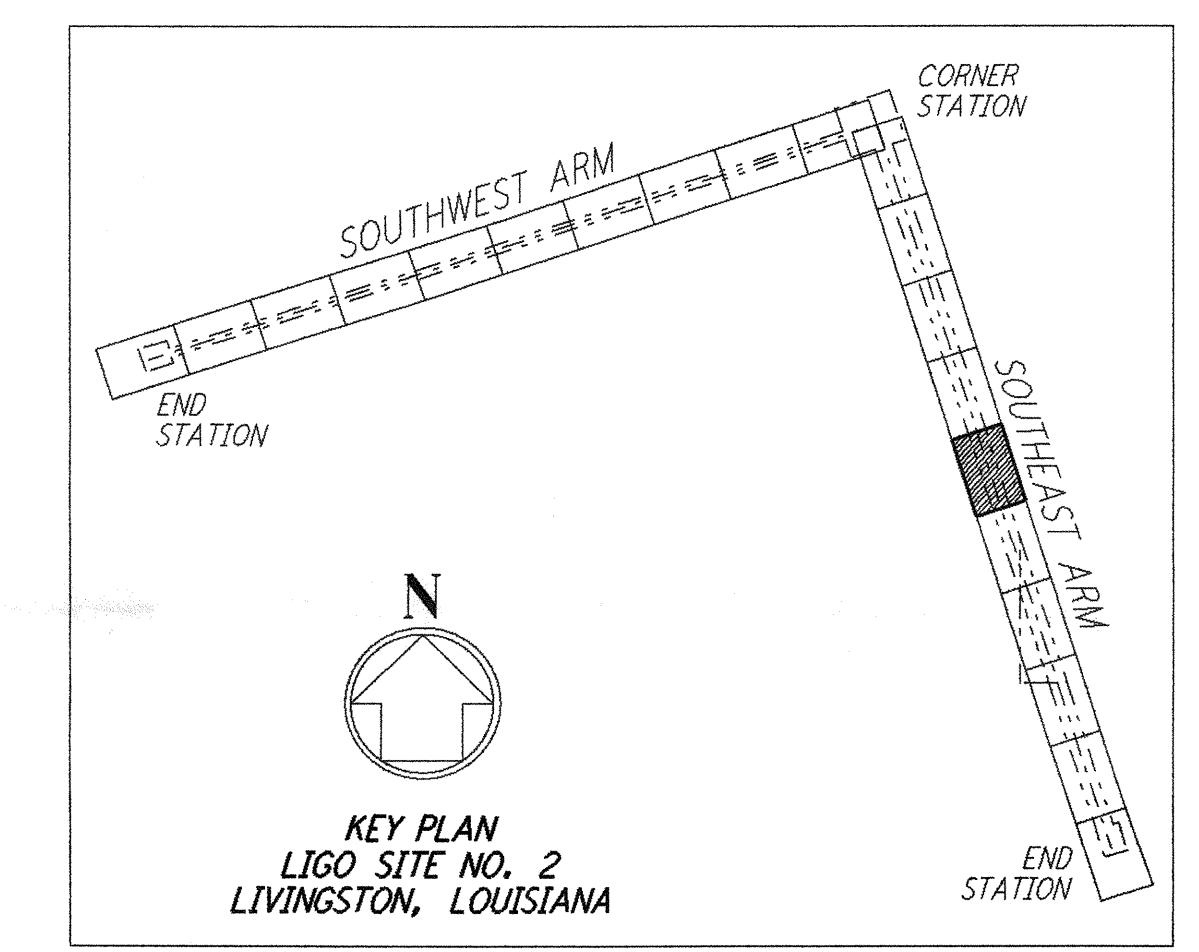


- NOTES:**
- SEE SHEET LA-C-502 FOR GENERAL NOTES, LEGEND AND ABBREVIATIONS.
 - SEE SHEET LA-C-504 FOR TYPICAL SECTIONS AND DETAILS.

PROFILE
 SCALES: HORIZ: 1" = 50'
 VERT: 1" = 5'



PLAN
 SCALE: 1" = 50'



LIGO-D961280-B-0

REFERENCES									
REVISIONS									
B	7/24/96	WRB	WL	Am	ISSUED FOR BID				
A	6/28/96	WRB	ML	TDM	FINAL DESIGN REVIEW				
DRAWING NO.	DESCRIPTION		NO.	DATE	BY	CHK'D	ENGR	PROJ	DESCRIPTION

DRAWN	WRB	6/24/96
CHECKED		
ENGINEER		
PROJ		



100 WEST WALNUT STREET
 PASADENA, CALIFORNIA



CALIFORNIA INSTITUTE OF TECHNOLOGY
 MASSACHUSETTS INSTITUTE OF TECHNOLOGY

LASER INTERFEROMETER GRAVITATIONAL-WAVE OBSERVATORY BEAM TUBE ENCLOSURE - LIVINGSTON, LA

TITLE	SCALE	CONTRACT NUMBER	PROJECT NUMBER
CIVIL SOUTHEAST ARM PLAN AND PROFILE STA 56+00 TO STA 70+00	AS NOTED	PP150969	8094
LA-C-535			

I:\B_001_23_08\0317_1996_5374902C_01\FLOW\SUBFILES\LA-C-535\LA-C-535.DWG

I:\B_001_23_08\0317_1996_5374902C_01\FLOW\SUBFILES\LA-C-535\LA-C-535.DWG