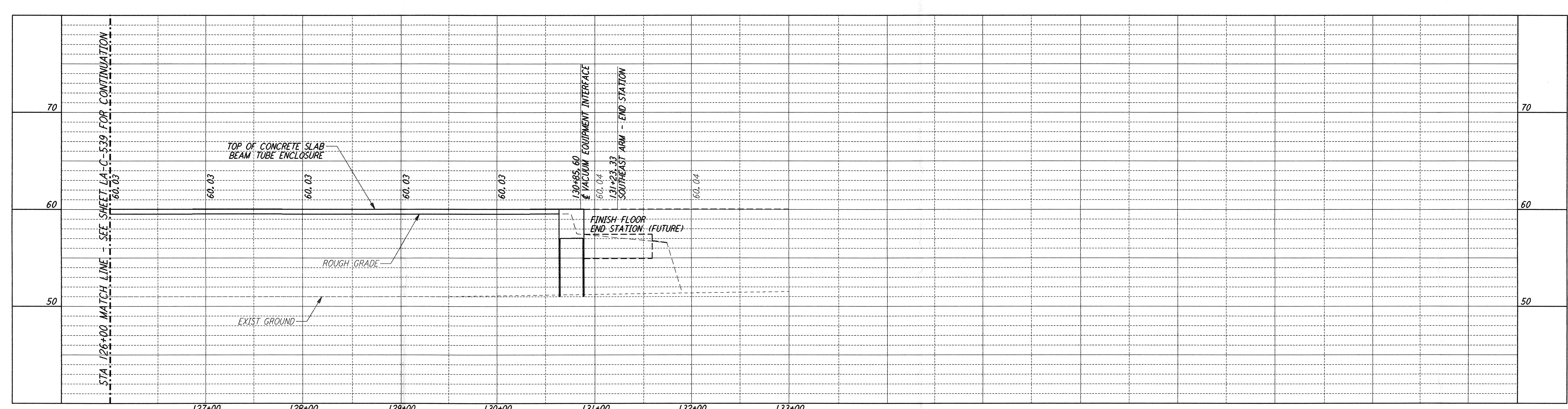


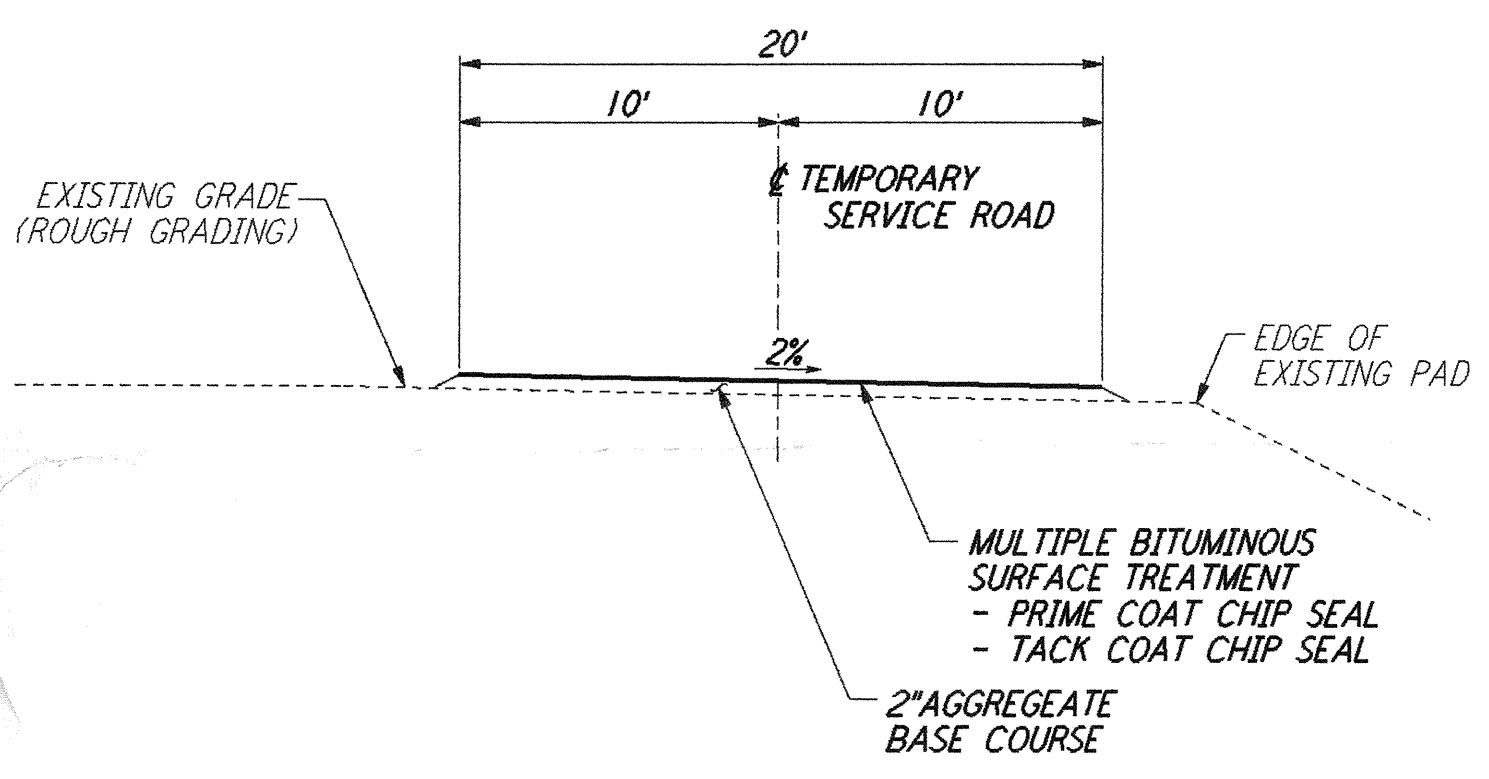
This document and the design it covers are the property of PARSONS. They are loaned only with the borrower's expressed written agreement that they will not be reproduced, copied, loaned, exhibited, or used in any other way, except by written consent from PARSONS to the borrower.



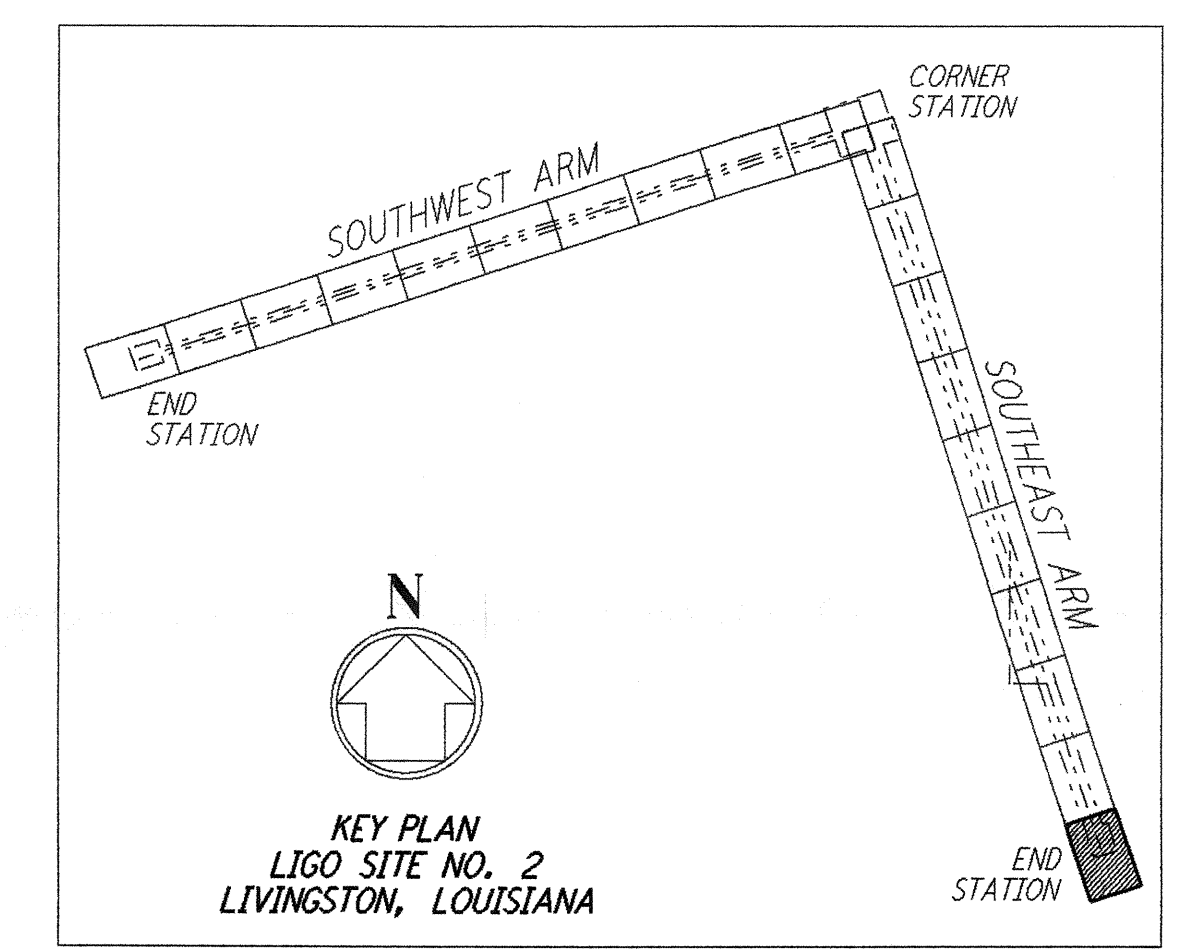
- NOTES:**
- SEE SHEET LA-C-502 FOR GENERAL NOTES, LEGEND AND ABBREVIATIONS.
 - SEE SHEET LA-C-504 FOR TYPICAL SECTIONS AND DETAILS.

CURVE DATA					
Δ	RADIUS	LENGTH	TANGENT	REMARK	
1 35°00'00"	110'	67.19'	34.68'	⊕ ROAD	
2 35°00'00"	100'	61.07'	31.53'	⊕ ROAD	

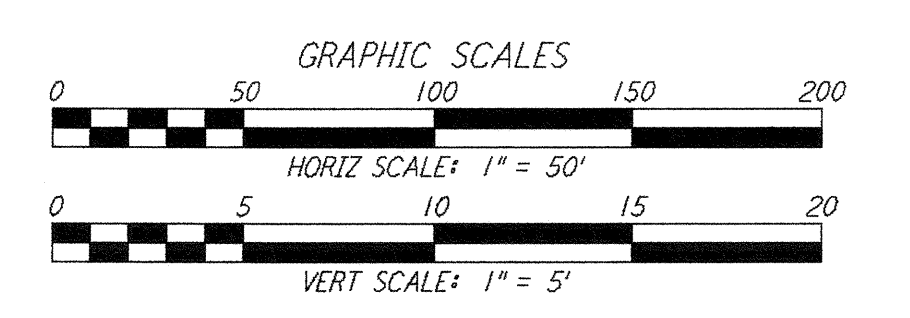
PROFILE
 SCALES: HORIZ: 1" = 50'
 VERT: 1" = 5'



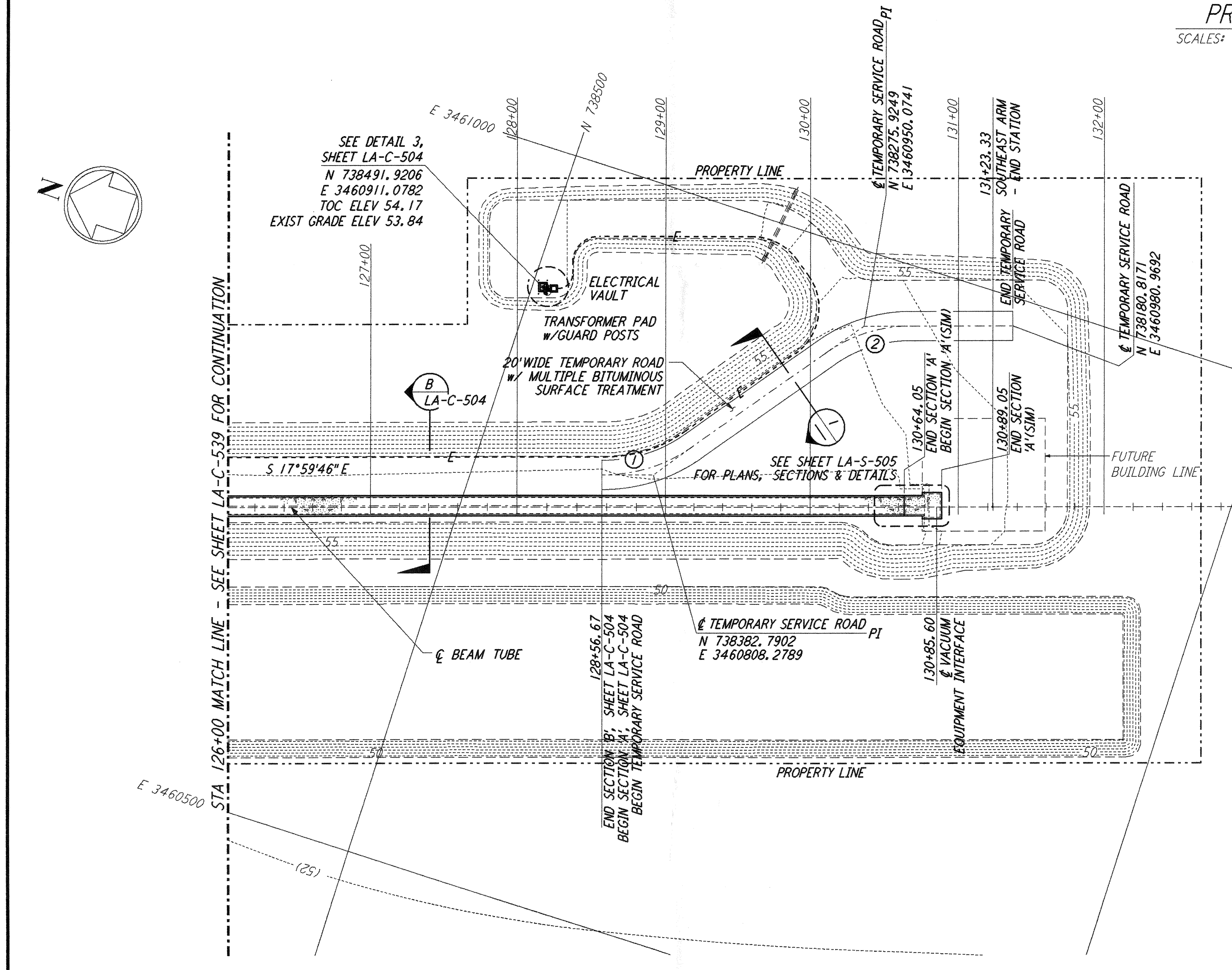
TEMPORARY SERVICE ROAD
 NOT TO SCALE



KEY PLAN
 LIGO SITE NO. 2
 LIVINGSTON, LOUISIANA



LIGO-D961285-B-0



PLAN
 SCALE: 1" = 50'

NO.	DATE	BY	CHKD	ENGR	PROJ	DESCRIPTION
B	7/24/96	WRB	ML		SP	ISSUED FOR BID
A	6/28/96	WRB	ML		TDM	FINAL DESIGN REVIEW

DRAWN	WRB	6/24/96
CHECKED		
ENGINEER		
PROJ		

PARSONS
 100 WEST WALNUT STREET
 PASADENA, CALIFORNIA

LIGO
 CALIFORNIA INSTITUTE OF TECHNOLOGY
 MASSACHUSETTS INSTITUTE OF TECHNOLOGY

**LASER INTERFEROMETER
 GRAVITATIONAL-WAVE OBSERVATORY
 BEAM TUBE ENCLOSURE - LIVINGSTON, LA**

TITLE: CIVIL SOUTHEAST ARM PLAN AND PROFILE
 SCALE: AS NOTED
 CONTRACT NUMBER: PPI50969
 PROJECT NUMBER: 8094
 SHEET NUMBER: **LA-C-540**

LUG JUL 23 07:00:27 1170 537 V0002 JENYLUIS W00LES V000ALEP06707