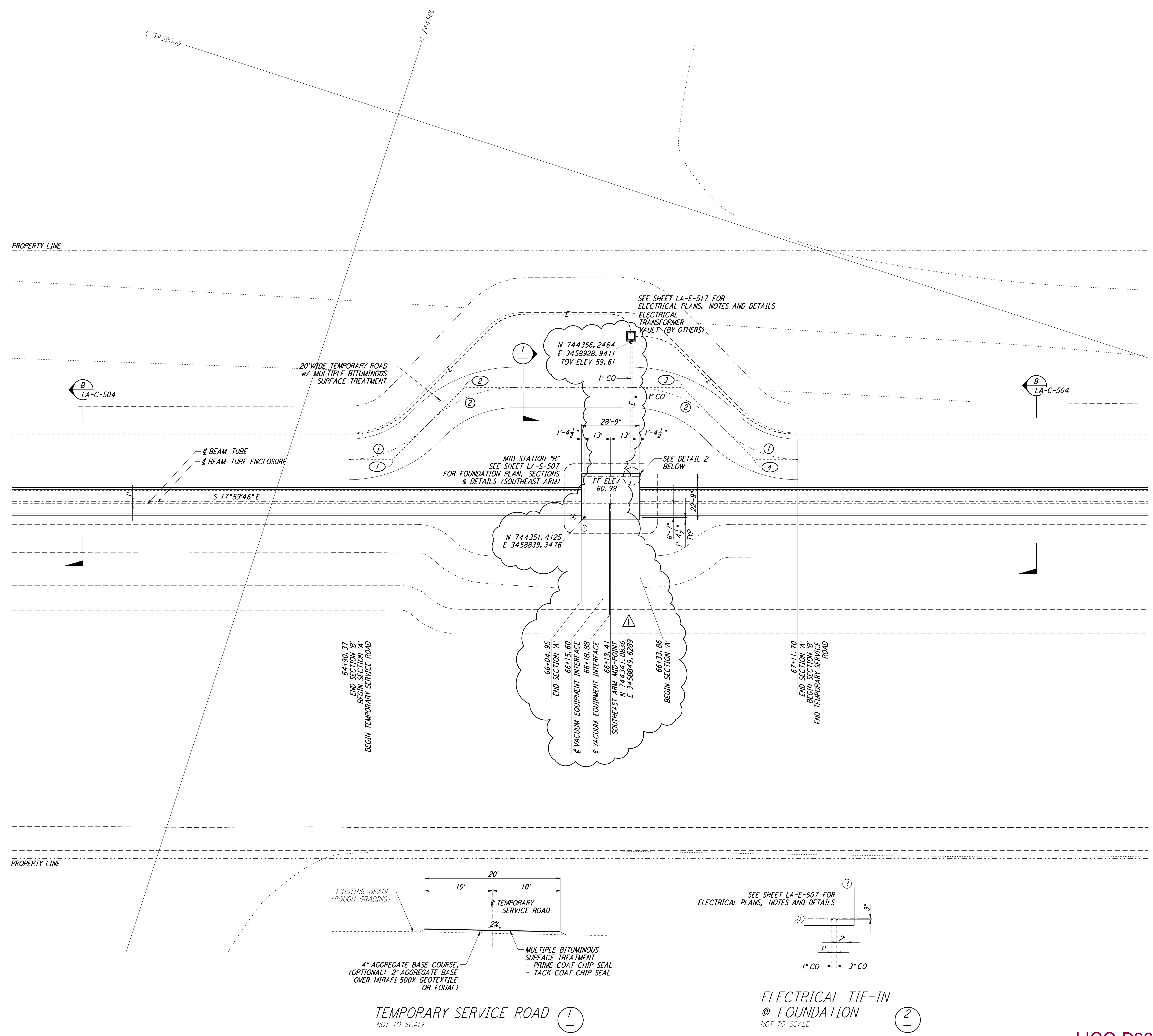


NOTES:

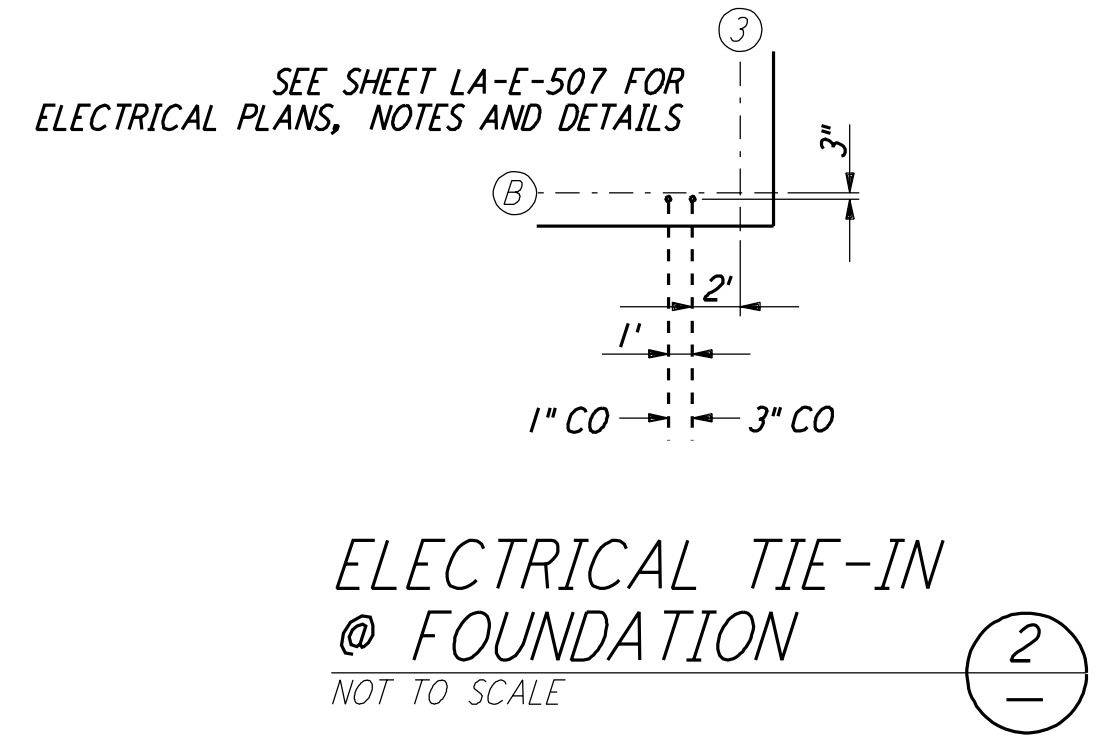
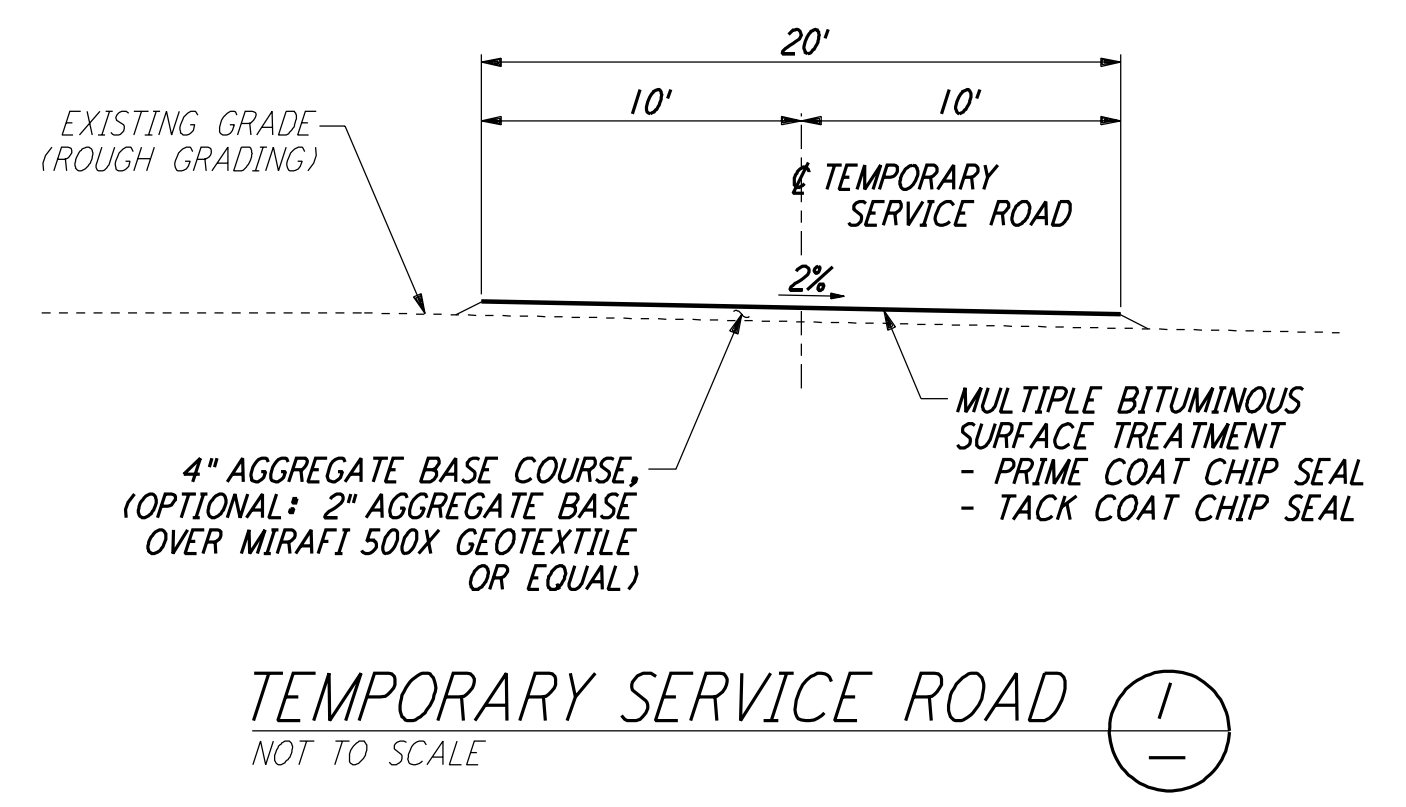
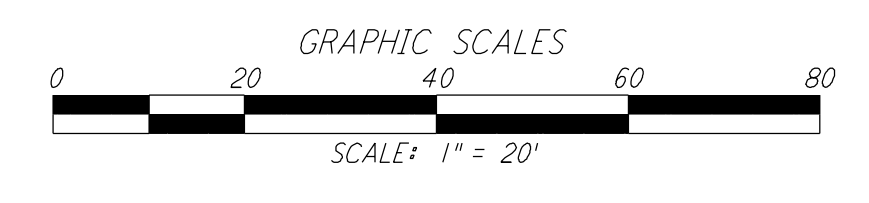
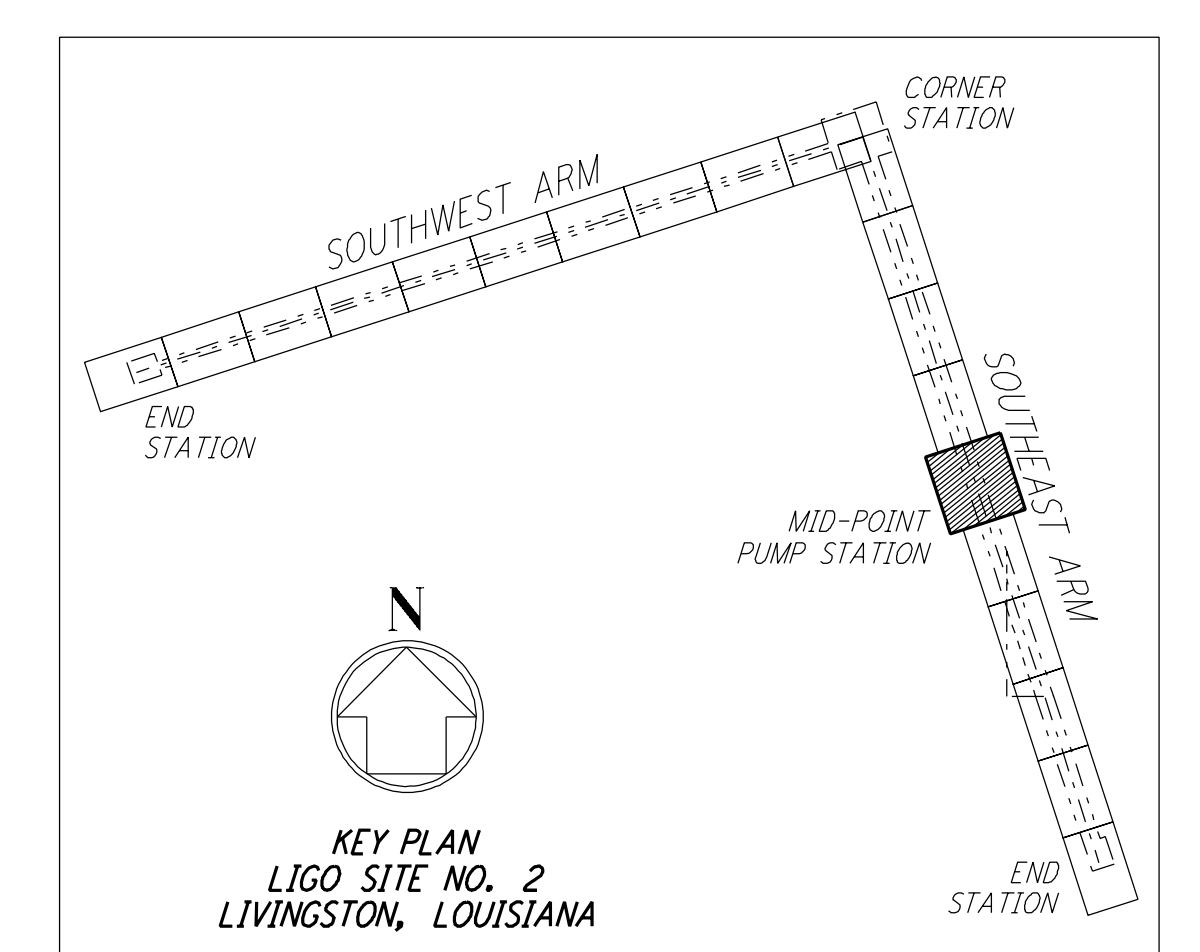
- SEE SHEET LA-C-502 FOR GENERAL NOTES, LEGEND AND ABBREVIATIONS.
- SEE SHEET LA-C-504 FOR TYPICAL SECTIONS AND DETAILS.

This document and the design it covers are the property of PARSONS. They are loaned only with the borrower's expressed written agreement that they will not be reproduced, copied, loaned, exhibited, or used in any other way, except by written consent from PARSONS to the borrower.



CURVE DATA					
Δ	RADIUS	LENGTH	TANGENT	REMARK	
1	45°00'00"	52'	40.84'	21.54'	TEMPORARY ROAD
2	45°00'00"	60'	47.12'	24.85'	TEMPORARY ROAD

COORDINATES			
	NORTH	EAST	REMARK
1	744450.1181	3458837.3414	PI TEMPORARY ROAD
2	744427.3479	3458882.0229	PI TEMPORARY ROAD
3	744325.2733	3458915.1812	PI TEMPORARY ROAD
4	744280.5922	3458892.4109	PI TEMPORARY ROAD



LIGO-D961286-01-O

REVISED	NO.	DATE	BY	CHKD	ENGR	PROJ	DESCRIPTION
1	2-3-97	WRB					REVISED MID STATION, ELEC VAULT, FIN FLR ELEV

ISSUED FOR CONSTRUCTION			
DRAWN	WRB	11-15-96	
CHECKED	ML	11-15-96	
ENGINEER	JB	11-15-96	
PROJ	TDM	11-15-96	

PARSONS
 100 WEST WALNUT STREET
 PASADENA, CALIFORNIA

LIGO
 CALIFORNIA INSTITUTE OF TECHNOLOGY
 MASSACHUSETTS INSTITUTE OF TECHNOLOGY

LASER INTERFEROMETER
 GRAVITATIONAL-WAVE OBSERVATORY
 BEAM TUBE ENCLOSURE - LIVINGSTON, LA

CIVIL
 SOUTHEAST ARM
 PUMP STATION
 PLOT AND UTILITY PLAN

SCALE: 1" = 20'
 CONTRACT NUMBER: PPI50969
 PROJECT NUMBER: 8094
LA-C-541

Note 1, LIGO, 04/08/99 10:31:57 PM
LIGO-D961286-01-O