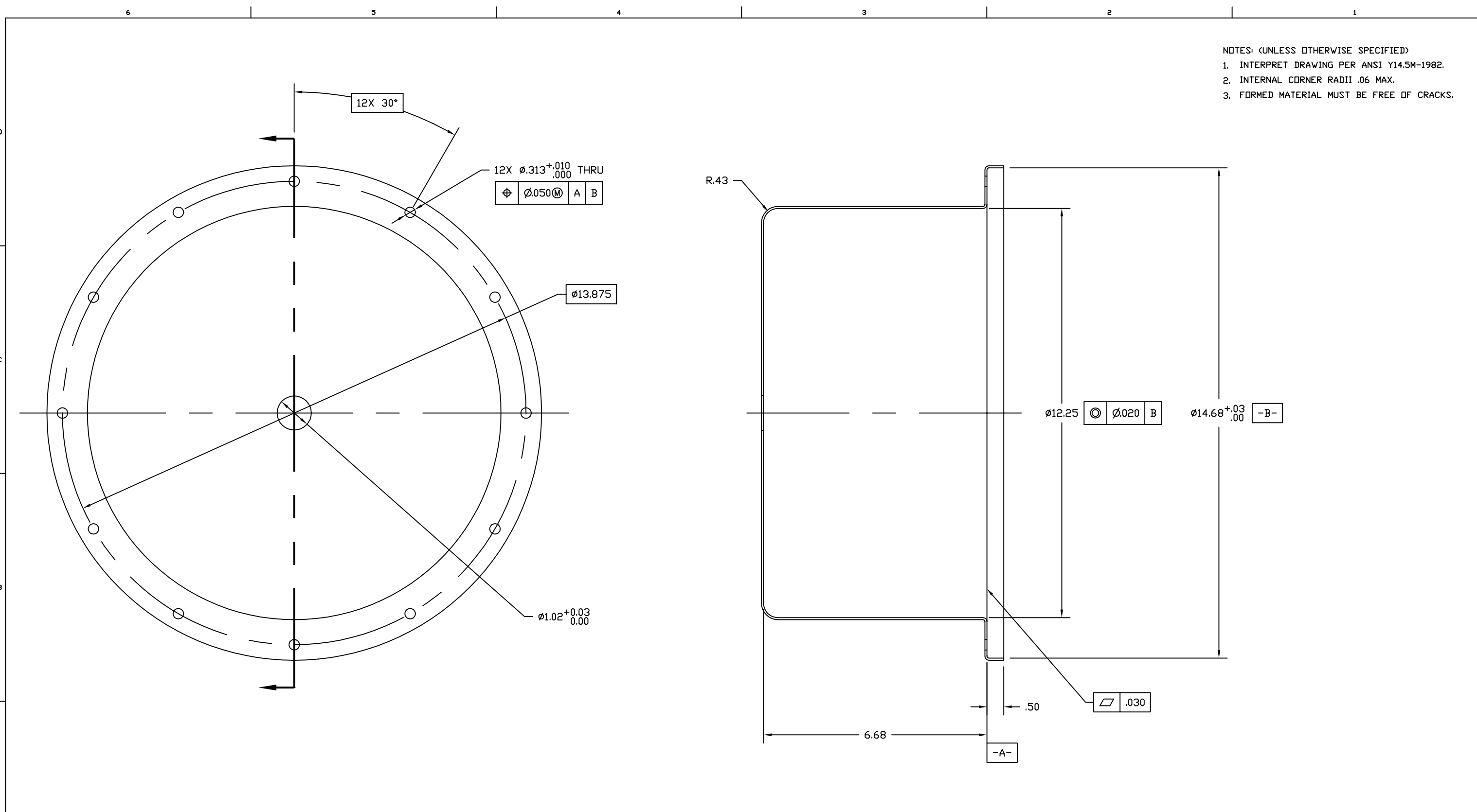


- NOTES: (UNLESS OTHERWISE SPECIFIED)
1. INTERPRET DRAWING PER ANSI Y14.5M-1982.
  2. INTERNAL CORNER RADII .06 MAX.
  3. FORMED MATERIAL MUST BE FREE OF CRACKS.



		UNLESS OTHERWISE SPECIFIED DIMENSIONS ARE IN INCHES												LIGO CALIFORNIA INSTITUTE OF TECHNOLOGY MASSACHUSETTS INSTITUTE OF TECHNOLOGY			
		TOLERANCES: FRACTIONAL ± ANGULAR ± 0.5° ANGULAR MACH ± BEND ± TWO PLACE DECIMAL ± .03		THREE PLACE DECIMAL ± .005 FINISHED SURFACE MICROINCH AVERAGE BREAK CORNERS IN DUT: .005-.010 REMOVE ALL BURRS												CORE OPTIC COMPONENT CARRIER COVER	
		MATERIAL: 6061 ALU SHEET, 1/16 THK PER QQ-A-250/11		HEAT TREAT: T6 PER AMS 2770												CAD FILE D961416-A.dwg	
		USED ON:		NEXT ASS'Y: D961419												SIZE DWG. NO. B D961416-A-D	
DWG. NO.		DESCRIPTION		REV		ISSUE DESCRIPTION										SCALE NTS	
REFERENCE DRAWINGS																SHEET 1 OF 1	