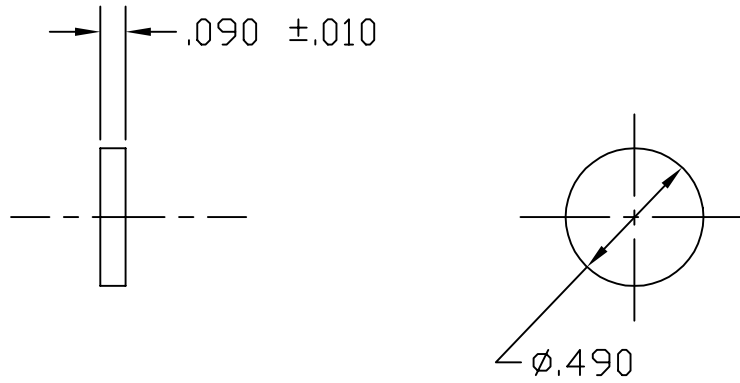


NOTES: (UNLESS OTHERWISE SPECIFIED)  
 1. INTERPRET DRAWING PER ANSI Y14.5M-1982  
 ⚠ N/A: D961434, D961435, D961444, D961445  
 D961454, & D961455



UNLESS OTHERWISE SPECIFIED  
 DIMENSIONS ARE IN INCHES

TOLERANCES:  
 FRACTIONAL  $\pm$   
 ANGULAR  $\pm 0.5^\circ$   
 ANGULAR MACH  $\pm$  BEND  $\pm$   
 TWO PLACE DECIMAL  $\pm .03$

THREE PLACE DECIMAL  $\pm .005$   
 FINISHED SURFACE 32 MICRINCH AVERAGE  
 BREAK CORNERS IN: OUT:  $.005-.010$   
 REMOVE ALL BURRS

MATERIAL:  
 .50 DIA 6061 ALU BAR  
 PER QQ-A-225/8

HEAT TREAT:  
 T6 PER AMS 2770

FINISH

REV	DESCRIPTION	DCC	SYS	DET	CDS	VE	CC	BT	CHECK	DRWN	DATE
A	DCN E960157										
01	RELEASE FOR FAB										
0A	PRELIMINARY RELEASE										
00	PRE-RELEASE									KABOT	12-19-96

**LIGO** CALIFORNIA INSTITUTE OF TECHNOLOGY  
 MASSACHUSETTS INSTITUTE OF TECHNOLOGY

CORE OPTIC COMPONENT CARRIER  
 PRESSURE DISC

CAD FILE D961426-A.dwg	SIZE A	DWG. NO. D961426-A-D
SCALE NTS	SHEET 1 OF 1	

USED ON: NEXT ASS'Y: ⚠

ISSUE DESCRIPTION