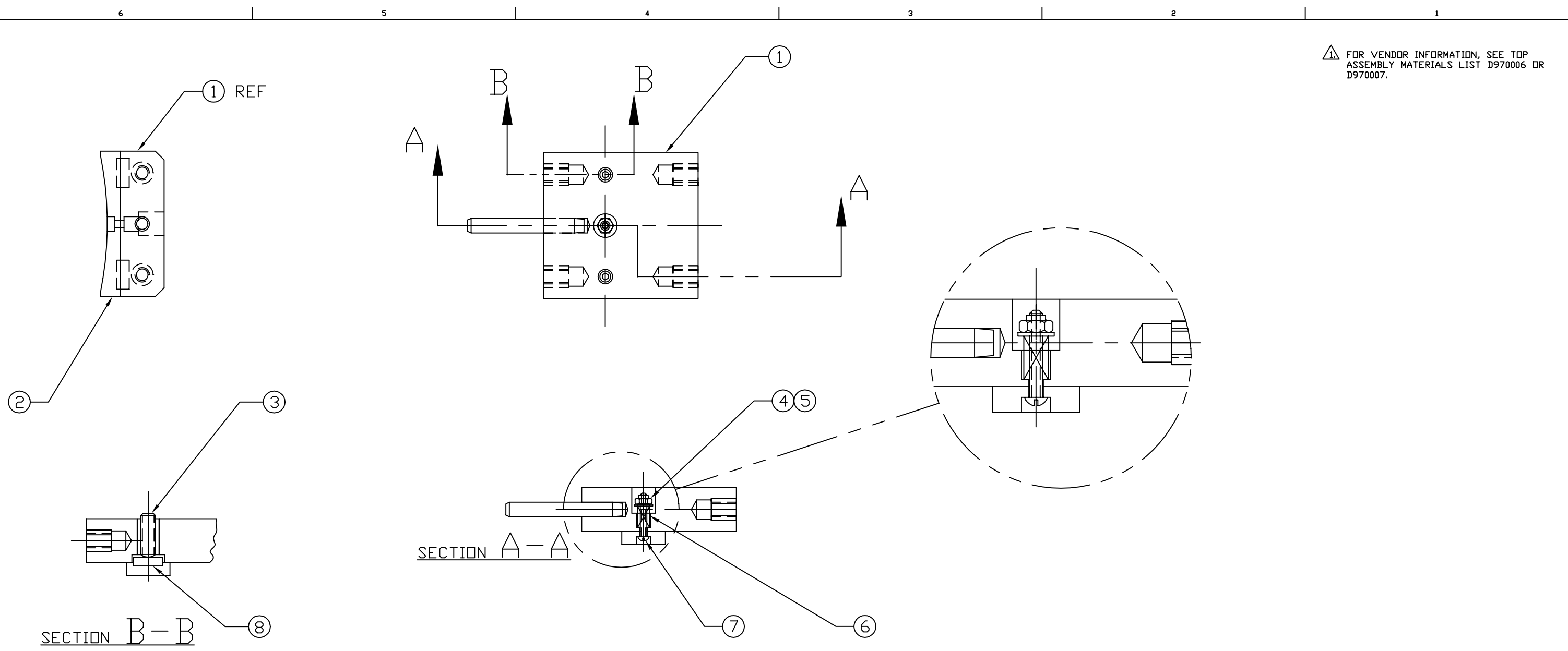


⚠ FOR VENDOR INFORMATION, SEE TOP ASSEMBLY MATERIALS LIST D970006 OR D970007.



REF	QTY	PART or DRWG No.	NOMENCLATURE or DESCRIPTION	MATERIAL
8	2	D961426	PRESSURE DISC	-
7	1	McM-Carr #91810A113	#4-40 X .75 LG SLOTTED RD HD SCR	STAINLESS STEEL
6	1	McM-Carr #9435K36	.240 OD, .022 WIRE, .56 F.L. COMP. SPRING	STAINLESS STEEL
5	1	McM-Carr #92141A005	#4 NOM, .13 ID, .31 OD, .032 THK FL WASH	STAINLESS STEEL
4	1	McM-Carr #91839A005	#4-40 HEX NUT, "FLEXLOC"	STAINLESS STEEL
3	2	McM-Carr #92765A999	1/4-20 X .75 LG OVAL POINT SDC SET SCR	STAINLESS STEEL
2	1	D961423	SIDE PAD	-
1	1	D961433	STANDOFF	-

UNLESS OTHERWISE SPECIFIED DIMENSIONS ARE IN INCHES		TOLERANCES: FRACTIONAL ± ANGULAR ± ANGULARMACH ± BEND ± TWO PLACE DECIMAL ±		THREE PLACE DECIMAL ± FINISHED SURFACE RMS BREAK CORNERS IN OUT REMOVE ALL BURRS		MATERIAL:		HEAT TREAT:		FINISH:		DCN No. E960157		LIGO CALIFORNIA INSTITUTE OF TECHNOLOGY MASSACHUSETTS INSTITUTE OF TECHNOLOGY	
DWG. NO.		DESCRIPTION		MATERIAL:		HEAT TREAT:		FINISH:		DCN No. E960157		DCN No. E960157		LIGO CALIFORNIA INSTITUTE OF TECHNOLOGY MASSACHUSETTS INSTITUTE OF TECHNOLOGY	
REFERENCE DRAWINGS		USED ON:		NEXT ASS'Y: D961461		MATERIAL:		HEAT TREAT:		FINISH:		DCN No. E960157		LIGO CALIFORNIA INSTITUTE OF TECHNOLOGY MASSACHUSETTS INSTITUTE OF TECHNOLOGY	
6		5		4		3		2		1		DCN No. E960157		LIGO CALIFORNIA INSTITUTE OF TECHNOLOGY MASSACHUSETTS INSTITUTE OF TECHNOLOGY	

REV	DESCRIPTION	DCC	SYS	DET	CDS	VE	CC	BT	CHECK	DRWN	DATE	SCALE	SIZE	DWG. NO.	SHEET
A	DCN No. E960157														
01	RELEASE FOR FAB														
pA	PRELIMINARY RELEASE														
00	PRE-RELEASE														

BEAM SPLITTER OPTIC CARRIER
STANDOFF ASSEMBLY

CAD FILE: D961435-A.dwg
SCALE: NTS
SHEET: 1 OF 1