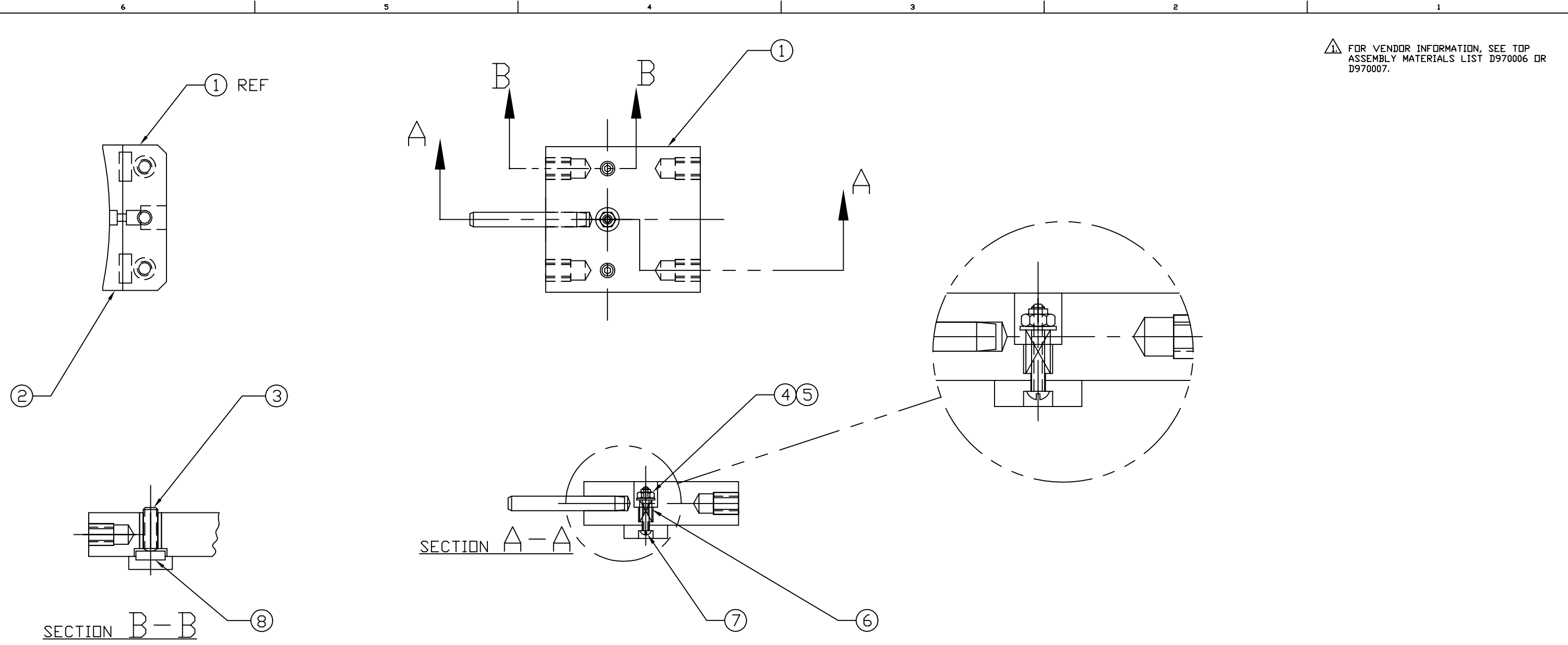


FOR VENDOR INFORMATION, SEE TOP ASSEMBLY MATERIALS LIST D970006 OR D970007.



| REF | QTY | PART or DRWG No. | NOMENCLATURE or DESCRIPTION | MATERIAL |
|-----|-----|---------------------|---|-----------------|
| 8 | 2 | D961426 | PRESSURE DISC | - |
| 7 | 1 | McM-Carr #91810A113 | #4-40 X .75 LG SLOTTED RD HD SCR | STAINLESS STEEL |
| 6 | 1 | McM-Carr #9435K36 | .240 OD, .022 WIRE, .56 F.L. COMP. SPRING | STAINLESS STEEL |
| 5 | 1 | McM-Carr #92141A005 | #4 NDM, .13 ID, .31 OD, .032 THK FL WASH | STAINLESS STEEL |
| 4 | 1 | McM-Carr #91839A005 | #4-40 HEX NUT, "FLEXLOC" | STAINLESS STEEL |
| 3 | 2 | McM-Carr #92765A999 | 1/4-20 X .625 LG OVAL POINT SDC SET SCR | STAINLESS STEEL |
| 2 | 1 | D961423 | SIDE PAD | - |
| 1 | 1 | D961433 | STANDOFF | - |

PARTS and MATERIAL LIST

| | | | | | | | | | | | | | | | | | | | | | | | | | |
|--|--|--|--|---|--|-------------------|--|-------------|--|-----------------|--|-----------------|--|--------------------|--|--|--|------------------------|--|----------------|--|--|--|--|--|
| UNLESS OTHERWISE SPECIFIED DIMENSIONS ARE IN INCHES | | TOLERANCES: FRACTIONAL ± ANGULAR ± ANGULAR MACH ± BEND ± TWO PLACE DECIMAL ± | | THREE PLACE DECIMAL ± FINISHED SURFACE RMS BREAK CORNERS IN OUT REMOVE ALL BURRS | | MATERIAL: | | HEAT TREAT: | | FINISH: | | DCN No. E970060 | | DCN No. E960157 | | 01 RELEASE FOR FAB | | pA PRELIMINARY RELEASE | | 00 PRE-RELEASE | | KABOT 12-28-96 | | LIGO CALIFORNIA INSTITUTE OF TECHNOLOGY MASSACHUSETTS INSTITUTE OF TECHNOLOGY | |
| DWG. NO. | | DESCRIPTION | | MATERIAL: | | HEAT TREAT: | | FINISH: | | DCN No. E970060 | | DCN No. E960157 | | 01 RELEASE FOR FAB | | pA PRELIMINARY RELEASE | | 00 PRE-RELEASE | | KABOT 12-28-96 | | LIGO CALIFORNIA INSTITUTE OF TECHNOLOGY MASSACHUSETTS INSTITUTE OF TECHNOLOGY | | | |
| REFERENCE DRAWINGS | | USED ON: | | NEXT ASS'Y: D961461 | | ISSUE DESCRIPTION | | SCALE | | NTS | | SHEET | | 1 OF 1 | | BEAM SPLITTER OPTIC CARRIER STANDOFF ASSEMBLY | | CAD FILE | | D961435-B.dwg | | SIZE DWG. NO. | | B D961435-B-D | |