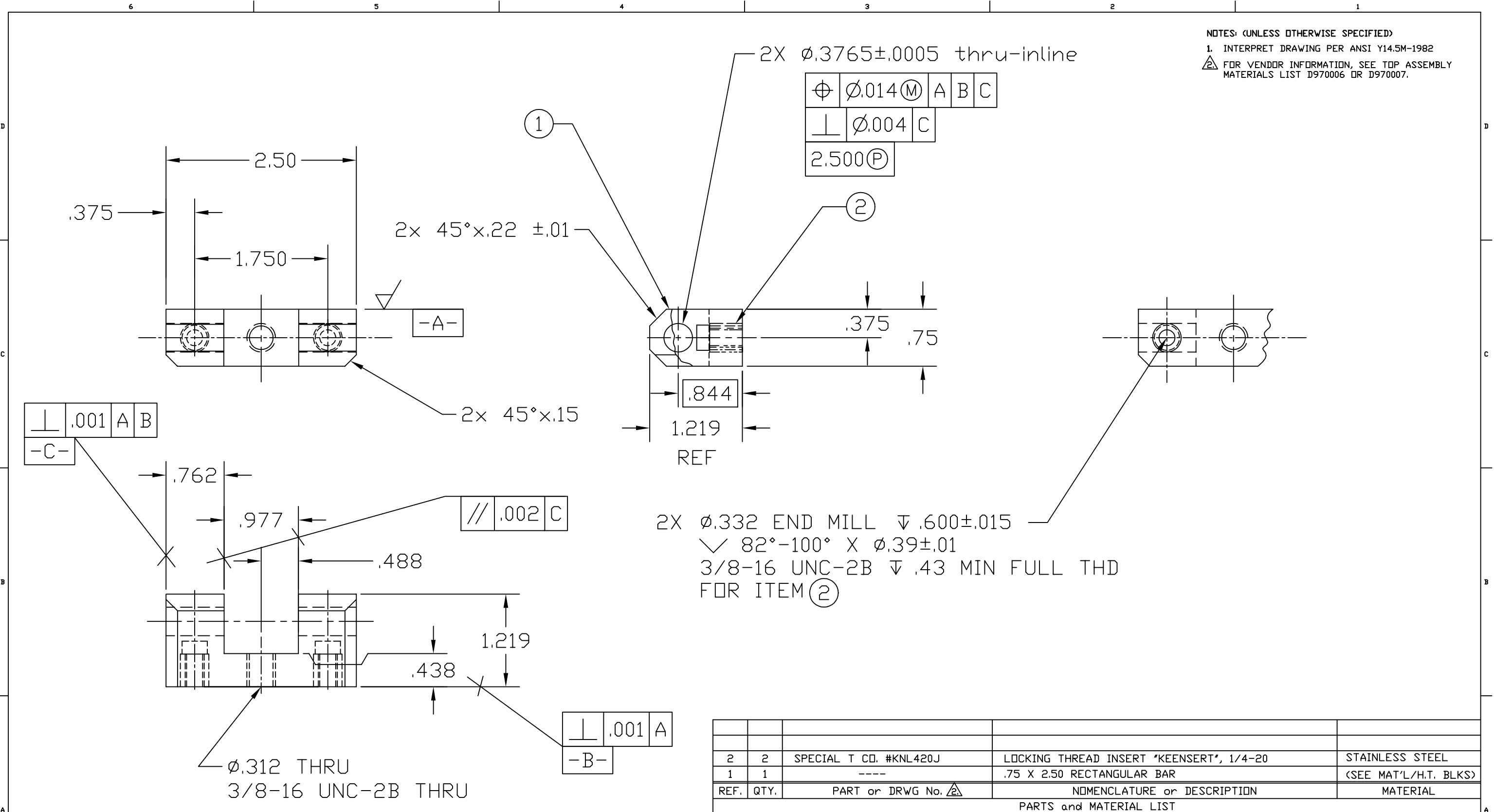


NOTES: (UNLESS OTHERWISE SPECIFIED)  
 1. INTERPRET DRAWING PER ANSI Y14.5M-1982  
 2. FOR VENDOR INFORMATION, SEE TOP ASSEMBLY MATERIALS LIST D970006 OR D970007.



REF.	QTY.	PART or DRWG No.	NOMENCLATURE or DESCRIPTION	MATERIAL
2	2	SPECIAL T CD. #KNL420J	LOCKING THREAD INSERT "KEENSERT", 1/4-20	STAINLESS STEEL
1	1	----	.75 X 2.50 RECTANGULAR BAR	(SEE MAT'L/H.T. BLKS)
PARTS and MATERIAL LIST				

UNLESS OTHERWISE SPECIFIED DIMENSIONS ARE IN INCHES		TOLERANCES: FRACTIONAL ± ANGULAR ± 0.5° ANGULAR MACH ± BEND ± TWO PLACE DECIMAL ± .03		THREE PLACE DECIMAL ± .005 FINISHED SURFACE 32 MICROINCH AVERAGE BREAK CORNERS IN "OUT" .005-.010 REMOVE ALL BURRS		A DCN No. E960157		LIGO CALIFORNIA INSTITUTE OF TECHNOLOGY MASSACHUSETTS INSTITUTE OF TECHNOLOGY	
MATERIAL: 6061 ALU BAR PER QQ-A-225/8		HEAT TREAT: T6 PER AMS 2770		FINISH:		01 RELEASE FOR FAB		CORE OPTICS COMPONENT CARRIER STANDOFF BRACKET	
USED ON:		NEXT ASS'Y: D961444 & D961445		00 PRE-RELEASE		KABOT 12-19-96		DWG. NO. D961440-A-D	
REFERENCE DRAWINGS				ISSUE DESCRIPTION		SCALE NTS		SHEET 1 OF 1	