

NOTES: (UNLESS OTHERWISE SPECIFIED)

- INTERPRET DRAWINGS PER ANSI Y14.5M-1982
- INSTALL ITEM 2 (THREAD INSERT) FROM FAR SIDE, TO WITHIN 1/4 THREAD PITCH FLUSH WITH NEAR END OF TAPPED HOLE, NO PROTRUSION. ALTER LENGTH FLUSH WITH FAR SIDE WITHIN 1/2 THREAD PITCH, NO PROTRUSION.
- FOR VENDOR INFORMATION, SEE TOP ASSEMBLY MATERIALS LIST D970006 OR D970007.

2X  $\phi.332 \pm 0.68$   
 $\sphericalangle 82^\circ-100^\circ \times \phi.39 \pm 0.01$   
 3/8-16 UNC-2B  $\pm .43$  MIN FULL THD  
 FOR ITEM ③

2X  $\phi.2660$  THRU  
 $\sphericalangle \phi.562 \pm .13 \pm 0.01$  NEAR SIDE  
 $\sphericalangle 120 \pm 5^\circ \times \phi.315 \pm 0.015$  BOTH SIDES  
 HELI-COIL TAP THRU, FOR ITEM ②

$\perp$  .002 A  
 -B-

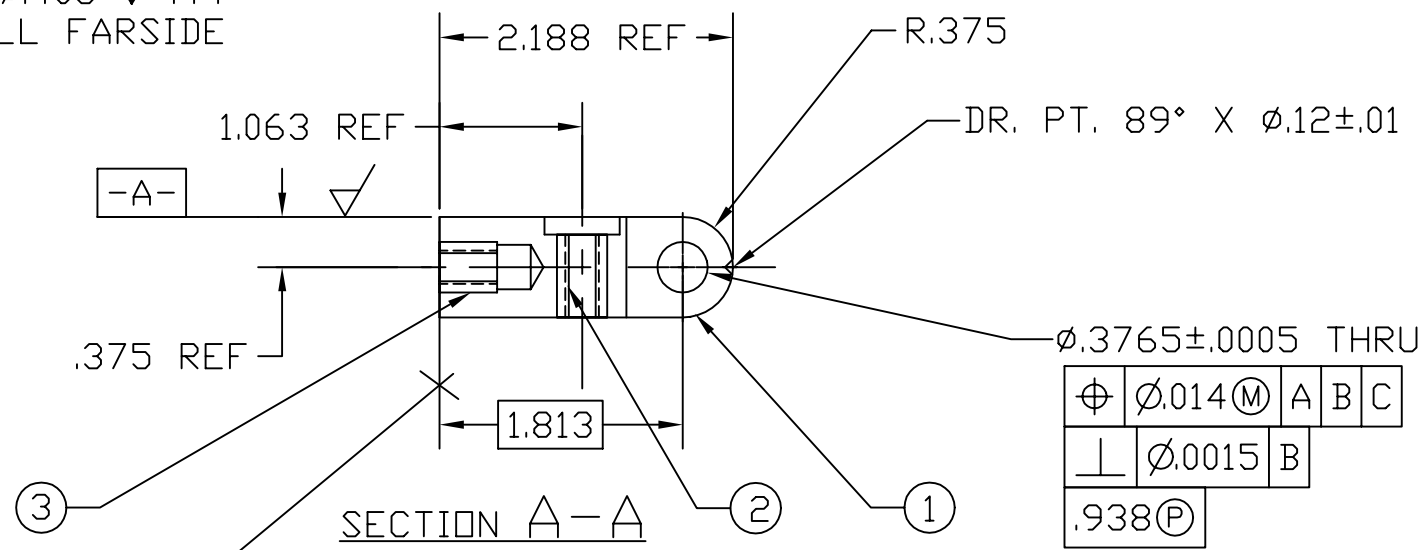
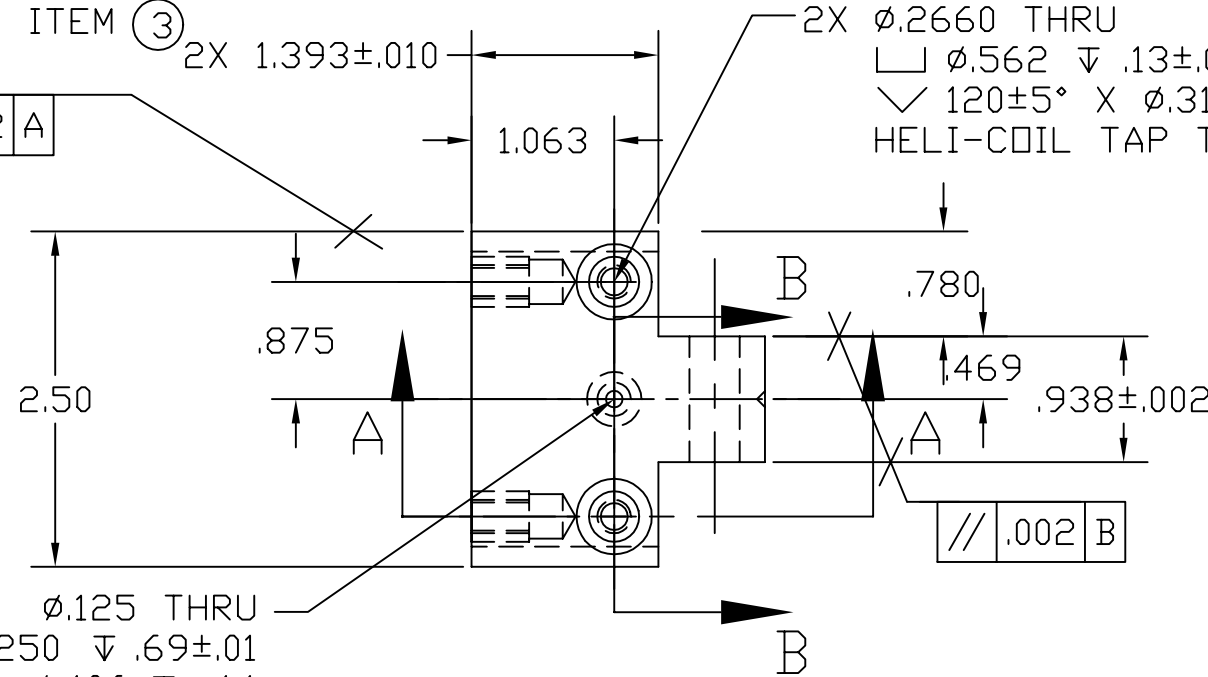
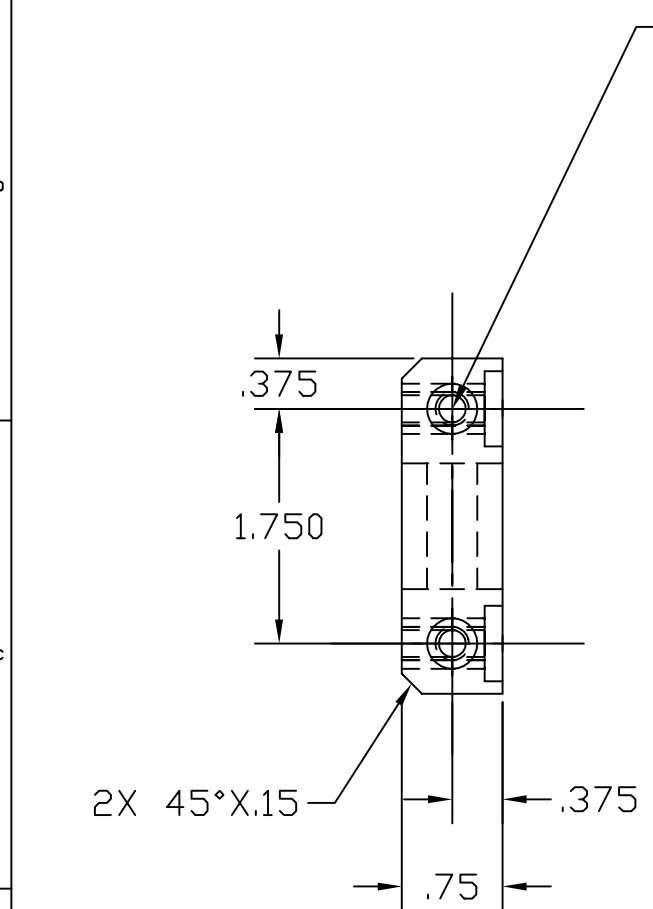
$\parallel$  .002 B

$\phi.125$  THRU  
 $\phi.250 \pm .69 \pm 0.01$   
 $\phi.406 \pm .44$   
 ALL FAR SIDE

$\phi.3765 \pm 0.0005$  THRU  
 $\phi \phi.014$  (M) A B C  
 $\perp \phi.0015$  B  
 $.938$  (P)

$\perp$  .001 A  
 .003 B  
 -C-

REF	QTY	PART or DRWG No.	NOMENCLATURE OR DESCRIPTION	MATERIAL
3	2	SPECIAL-T #KN420J	LT. WT. THD. "KEENSERT" 1/4-20 X 5/8	STAINLESS STEEL
2	2	EMHART FST #1185-4CN625	THREAD INSERT "HELI-COIL" 1/4-20 X 5/8	STAINLESS STEEL
1	1	-	.75 X 2.50 RECTANGULAR BAR	(SEE MAT'L/H.T. BLKS)
PARTS and MATERIAL LIST				



REF ② SECTION B-B

UNLESS OTHERWISE SPECIFIED DIMENSIONS ARE IN INCHES		TOLERANCES: FRACTIONAL $\pm$ ANGULAR $\pm 0.5^\circ$ ANGULAR MACH $\pm$ BEND $\pm$ TWO PLACE DECIMAL $\pm .03$		THREE PLACE DECIMAL $\pm .005$ FINISHED SURFACE 32 MICROINCH AVERAGE BREAK CORNERS IN $\pm$ .005-.010 REMOVE ALL BURRS		MATERIAL: 6061 ALU BAR PER QQ-A-225/8		HEAT TREAT: T6 PER AMS 2770		FINISH:		DCN No. E960157		KABOT 1-6-97		CAD FILE D961443-A.dwg		SIZE DWG. NO. B D961443-A-D	
DWG. NO.		DESCRIPTION		MATERIAL		HEAT TREAT		FINISH		DCN No.		KABOT		CAD FILE		SIZE DWG. NO.			
REFERENCE DRAWINGS		USED ON:		NEXT ASS'Y: D961445						ISSUE DESCRIPTION		SCALE		SHEET		1 OF 1			