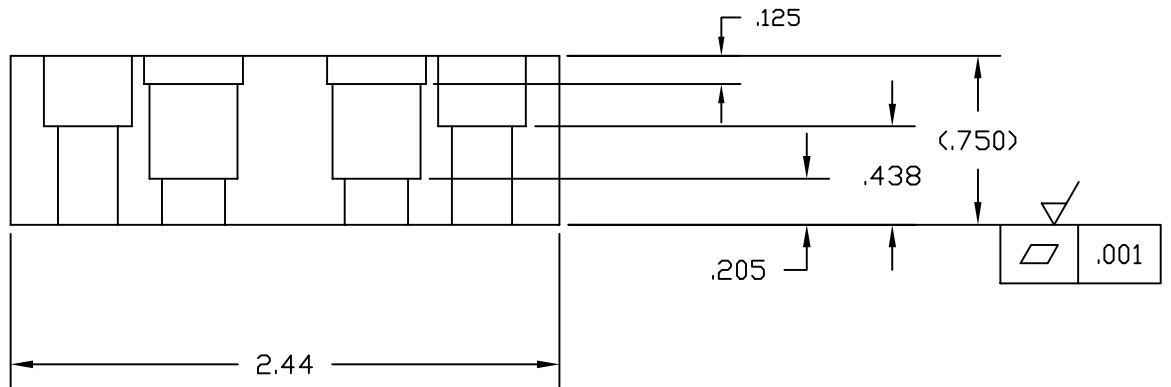


NOTES: (UNLESS OTHERWISE SPECIFIED)
 1. INTERPRET DRAWING PER ANSI
 Y14.5M-1982.



SECTION A - A

UNLESS OTHERWISE SPECIFIED
DIMENSIONS ARE IN INCHES

TOLERANCES:
 FRACTIONAL \pm
 ANGULAR $\pm 0.5^\circ$
 ANGULAR MACH \pm BEND \pm
 TWO PLACE DECIMAL $\pm .03$

THREE PLACE DECIMAL $\pm .005$
 FINISHED SURFACE 63 MICRINCH AVERAGE
 BREAK CORNERS IN: OUT: .005-.010
 REMOVE ALL BURRS

MATERIAL:
 303 CRES. 3/4 X 3/4 BAR
 PER AMS 5738

HEAT TREAT:

FINISH:

USED ON:

NEXT ASS'Y: D961450/D961468

REV	DESCRIPTION	DCC	SYS	DET	CDS	VE	CC	BT	CHECK	DRWN	DATE
A	DCN E960157										
00	RELEASE FOR FAB									CONLEY	1-13-97

LIGO CALIFORNIA INSTITUTE OF TECHNOLOGY
 MASSACHUSETTS INSTITUTE OF TECHNOLOGY

CORE OPTIC COMPONENT CARRIER
 CAPTIVE SCREW BRACKET

CAD FILE: D961447-A.dwg
 SCALE: NTS
 SIZE: DWG. NDL: A
 SHEET: D961447-A-D
 SHEET 1 OF 1

ISSUE DESCRIPTION