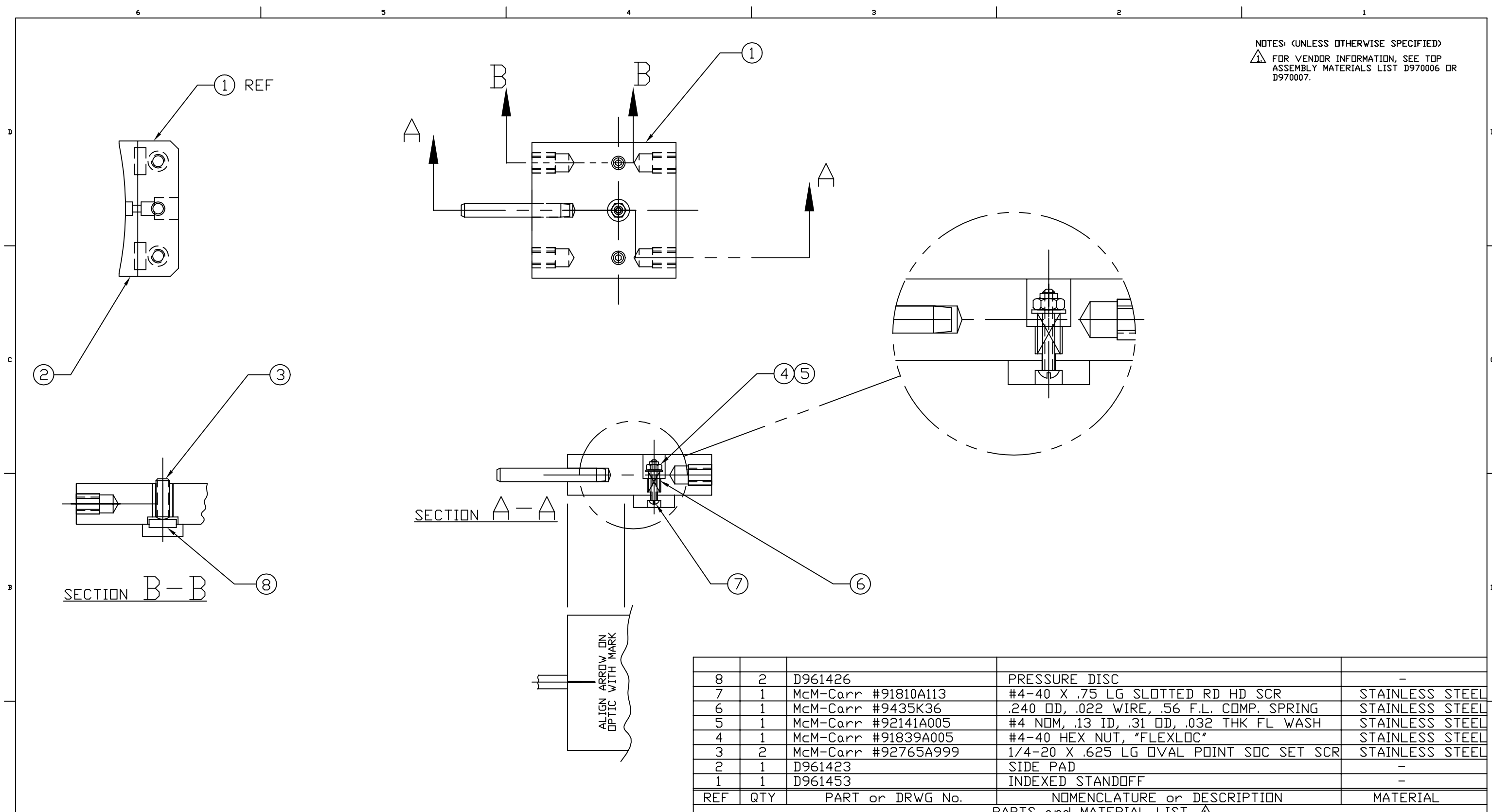


NOTES: (UNLESS OTHERWISE SPECIFIED)
 ⚠ FOR VENDOR INFORMATION, SEE TOP ASSEMBLY MATERIALS LIST D970006 OR D970007.



REF	QTY	PART or DRWG No.	NOMENCLATURE or DESCRIPTION	MATERIAL
8	2	D961426	PRESSURE DISC	-
7	1	McM-Carr #91810A113	#4-40 X .75 LG SLOTTED RD HD SCR	STAINLESS STEEL
6	1	McM-Carr #9435K36	.240 OD, .022 WIRE, .56 F.L. COMP. SPRING	STAINLESS STEEL
5	1	McM-Carr #92141A005	#4 NDM, .13 ID, .31 OD, .032 THK FL WASH	STAINLESS STEEL
4	1	McM-Carr #91839A005	#4-40 HEX NUT, "FLEXLOC"	STAINLESS STEEL
3	2	McM-Carr #92765A999	1/4-20 X .625 LG OVAL POINT SDC SET SCR	STAINLESS STEEL
2	1	D961423	SIDE PAD	-
1	1	D961453	INDEXED STANDOFF	-

PARTS and MATERIAL LIST ⚠

DWG. NO.	DESCRIPTION	MATERIAL	HEAT TREAT	FINISH	REV	DESCRIPTION	DCC	SYS	DET	CDS	VE	CC	BT	CHECK	DRWN	DATE	SCALE	SHEET
					B	DCN No. E970060								CDYNE	CONLEY	5-7-97		
					A	DCN No. E960157								CDYNE	KABOT	2-14-97		
					01	RELEASE FOR FAB												
					pA	PRELIMINARY RELEASE												
					00	PRE-RELEASE												

UNLESS OTHERWISE SPECIFIED
 DIMENSIONS ARE IN INCHES

TOLERANCES:
 FRACTIONAL ±
 ANGULAR ±
 ANGULAR MACH ± BEND ±
 TWO PLACE DECIMAL ±

THREE PLACE DECIMAL ±
 FINISHED SURFACE RMS
 BREAK CORNERS IN OUT
 REMOVE ALL BURRS

MATERIAL: _____ HEAT TREAT: _____ FINISH: _____

USED ON: _____ NEXT ASS'Y: D961461

LIGO CALIFORNIA INSTITUTE OF TECHNOLOGY
 MASSACHUSETTS INSTITUTE OF TECHNOLOGY

**BEAM SPLITTER OPTIC CARRIER
 INDEXED STANDOFF ASSEMBLY**

CAD FILE: D961455-B.dwg SIZE: B DWG. NO.: D961455-B-D
 SCALE: NTS SHEET: 1 OF 1