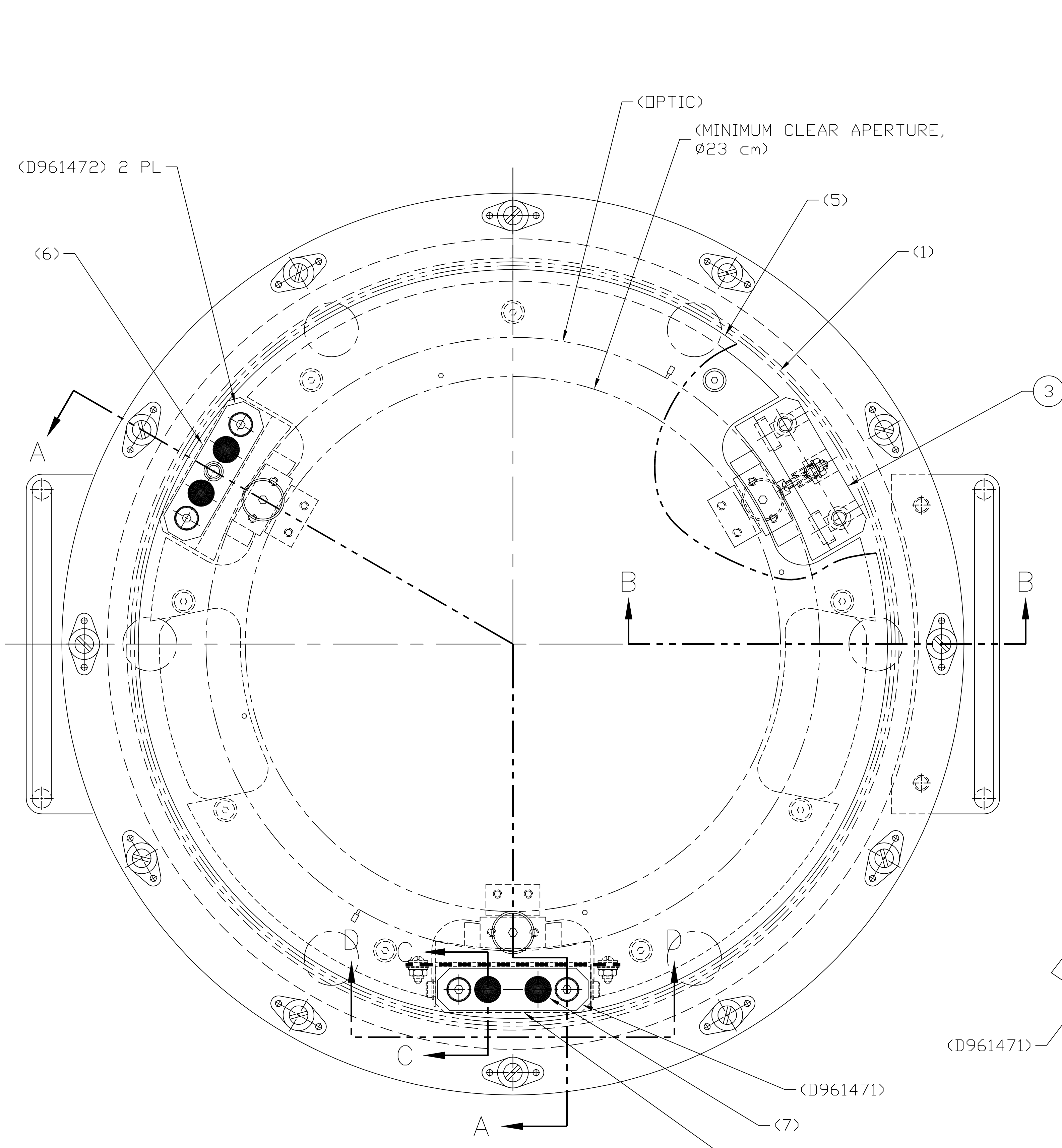
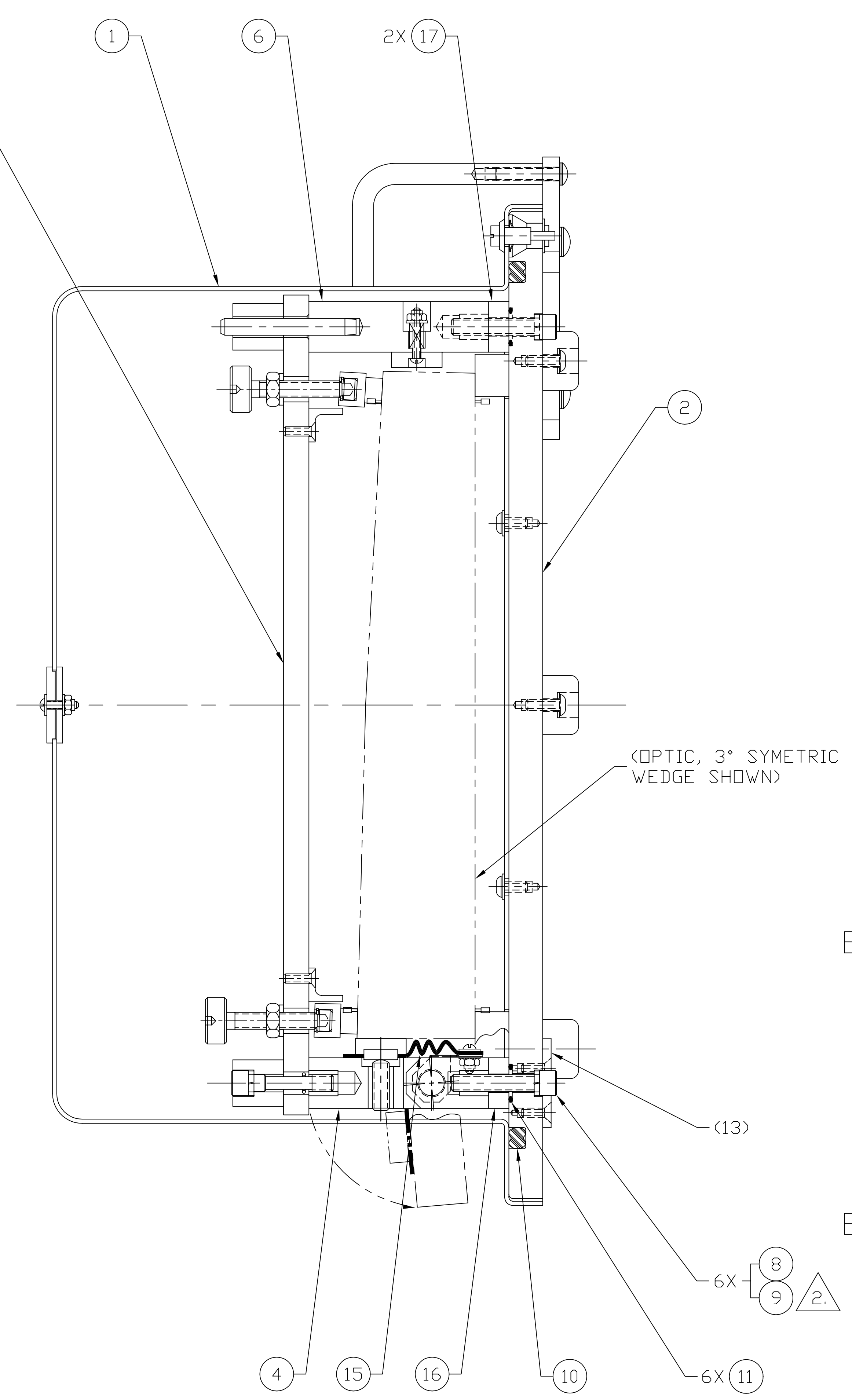
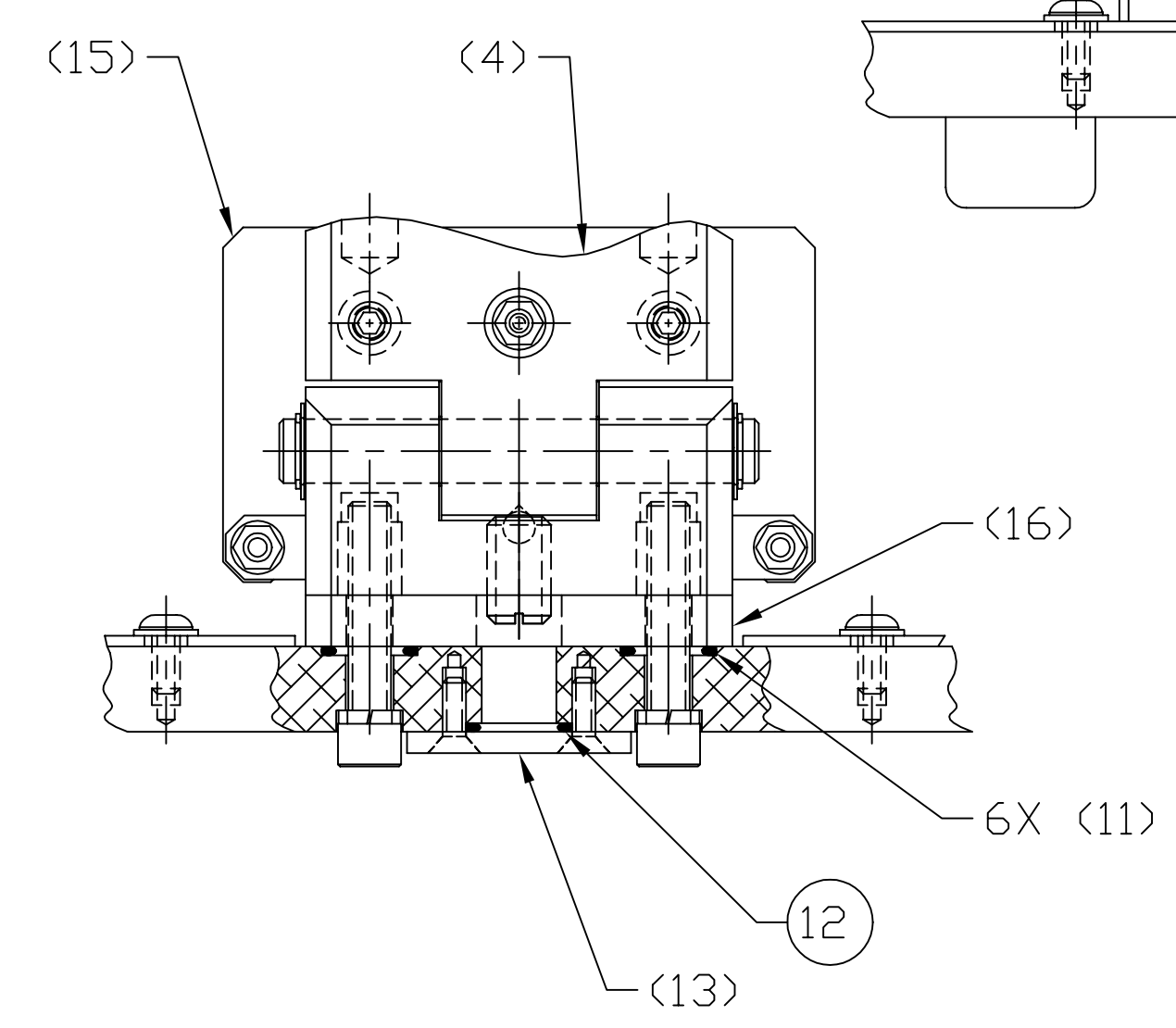
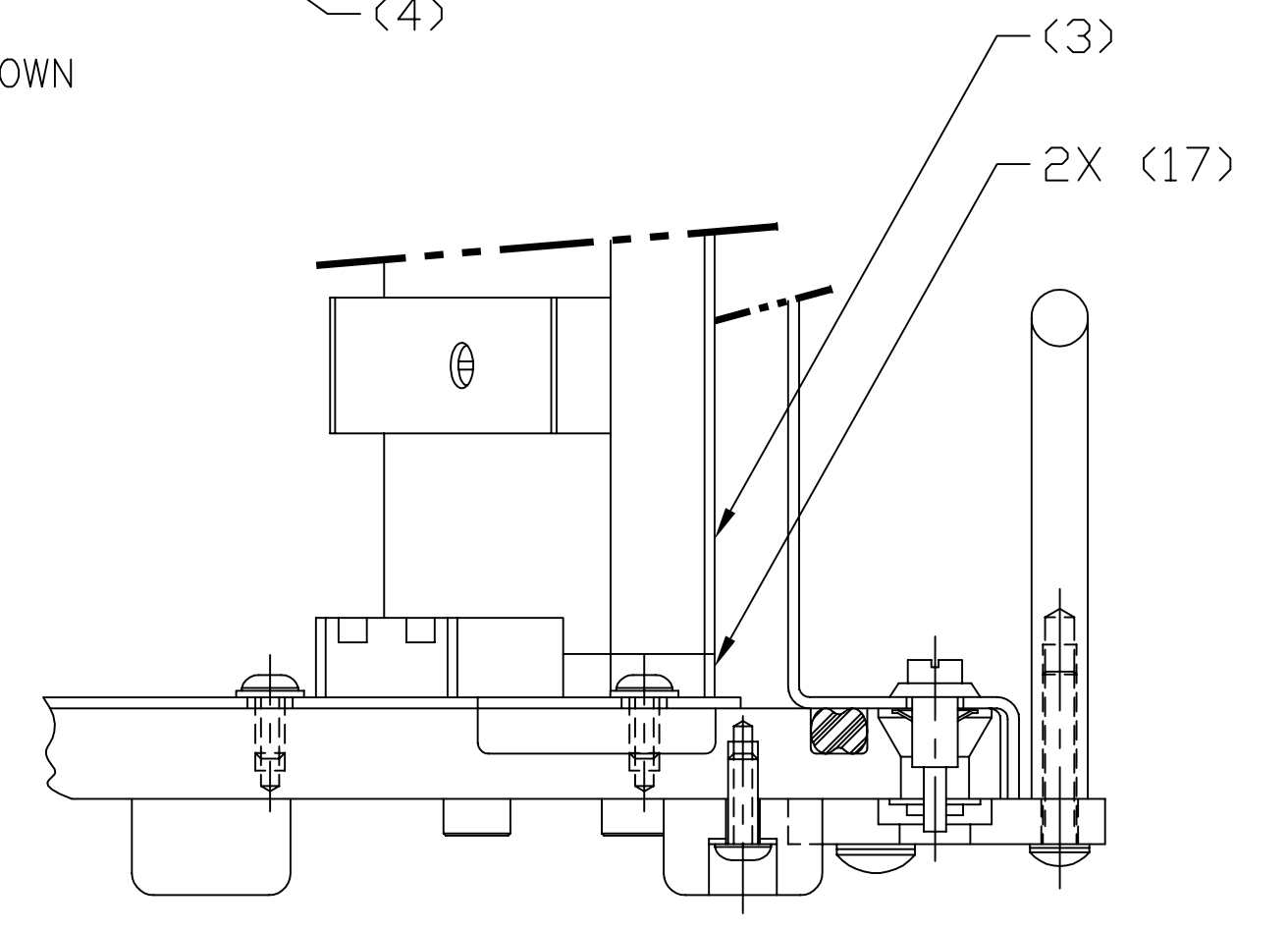
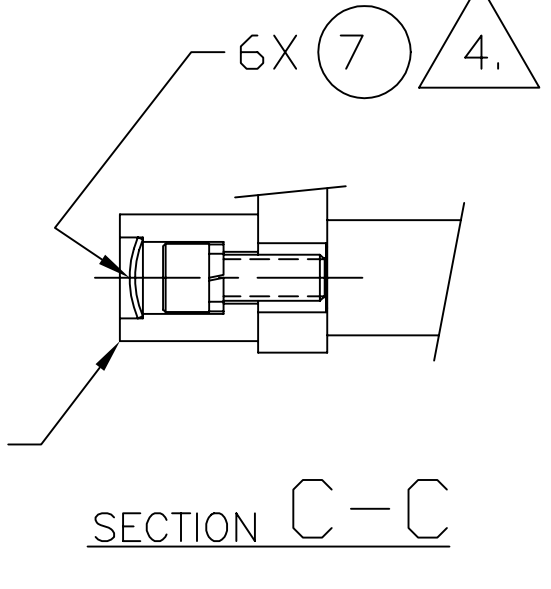


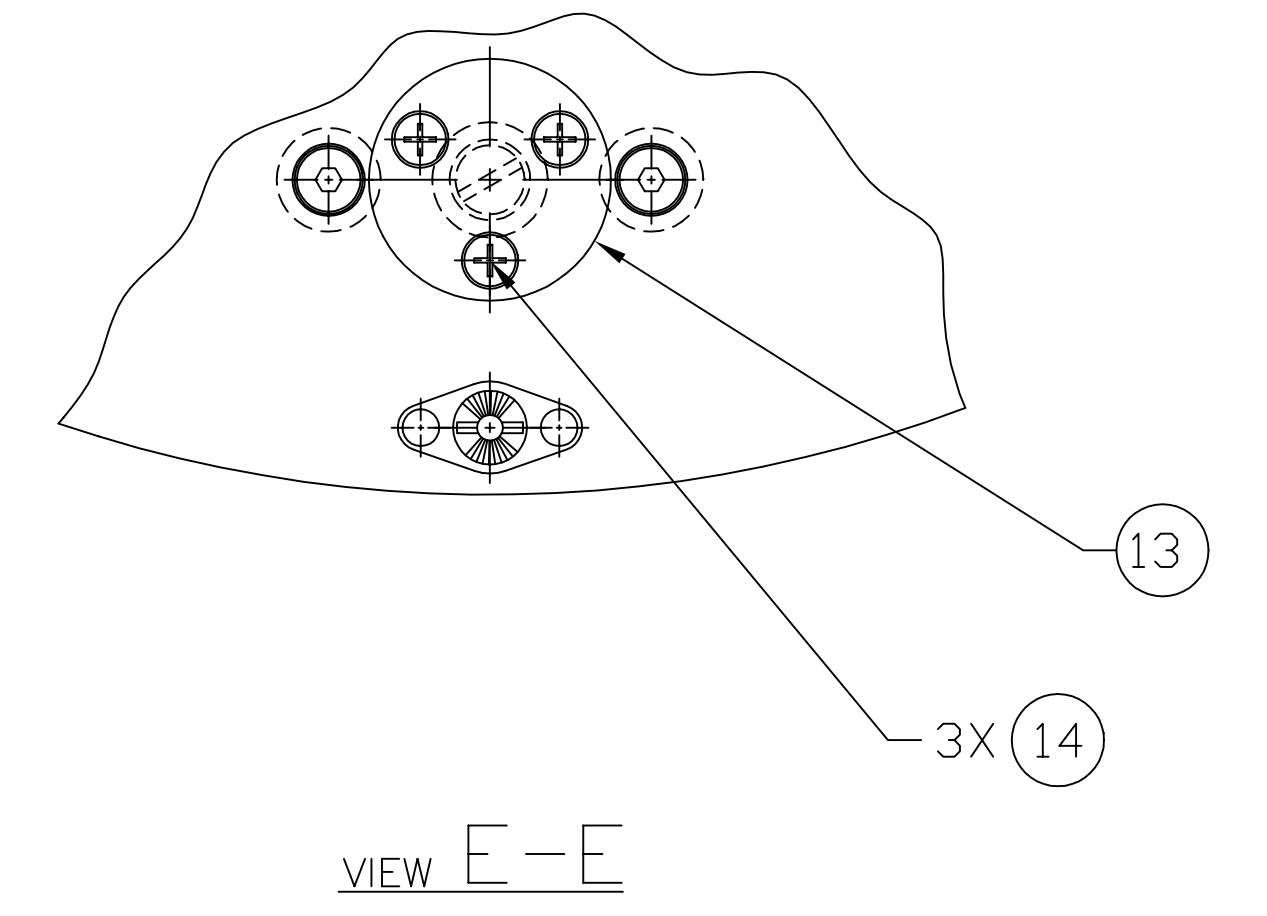
NOTES: (UNLESS OTHERWISE SPECIFIED)
 1. SEE SEPARATE MATERIALS LIST D970007 FOR PARTS, MATERIALS, & VENDOR INFORMATION.
 2. TORQUE ITEM 9 (SCREW) TO 70-75 in-lb.
 3. TO INSTALL ITEM 5 (TOP PLATE ASSEMBLY), BACK OFF THE 2 MOUNTING SCREWS (SEE SECTION C-C) FOR EACH OF THE 3 CAPTIVE SCREW BRACKET SUB ASSEMBLIES (D961471 & D961472), UNTIL THE LOCK WASHERS ARE FREE OF COMPRESSION. SET ITEM 5 IN PLACE AND TORQUE THE CAPTIVE SCREWS (6 TOT) TO 65-70 in-lb. THEN, RE-TORQUE THE CAPTIVE SCREW BRACKET MOUNTING SCREWS TO 65-70 in-lb WHILE ITEM 5 REMAINS MOUNTED. REMOVE ITEM 5 FOR NEXT OPERATION, SEE NOTE 4.
 4. AFTER REMOVING ITEM 5, REMOVE CAPTIVE SCREWS (6 TOT, BY REMOVING WIRE RETAINING RING FROM SHANK USING PLIERS) FROM ITEM 5 AND INSTALL ITEM 7 (EXPANSION PLUG) USING D970004 EXPANSION PLUG INSTALLATION TOOL. DO NOT MAR BOTTOM SURFACE OF ITEM 5 WITH ANVIL. INSTALLATION TOOL MAY BE MODIFIED AS NECESSARY FOR PROPER COMPRESSION OF EXPANSION PLUG BY CUTTING BACK SHOULDER. FINALLY, REPLACE CAPTIVE SCREWS.



TOP OF COVER REMOVED IN VIEW
 ENGRAVING ON COVER PLATE NOT SHOWN



(OPTIC, 3° SYMMETRIC WEDGE SHOWN)



UNLESS OTHERWISE SPECIFIED
 DIMENSIONS ARE IN FEET (cm)
 TOLERANCES:
 FRACTIONAL ± BEND ±
 ANGULAR ± BEND ±
 TWO PLACE DECIMAL ±
 THREE PLACE DECIMAL ±
 FINISHED SURFACE FINISH
 BREAK CORNERS IN OUT
 REMOVE ALL BURRS
 DO NOT SCALE THIS DRAWING
 USED ON:
 NEXT ASSY: N/A

REV	DESCRIPTION	ISSUE DESCRIPTION
D	DCN E980214-00	CDNLEY 9-14-98
C	DCN E970133-00	CDNLEY 10-1-97 COYNE 10-1-97
B	DCN E970059-00	CDNLEY 5-20-97 COYNE 5-27-97
A	DCN E960157-00	CDNLEY 2-14-97 COYNE 2-14-97
00	PRE-RELEASE	CDNLEY 1-2-97

LIGO CALIFORNIA INSTITUTE OF TECHNOLOGY MASSACHUSETTS INSTITUTE OF TECHNOLOGY	
BEAM SPLITTER OPTIC CARRIER ASSEMBLY	
CAD FILE D961461-D.dwg	DWG NO. D961461-D-D
SCALE NTS	SHEET 1 OF 1

DWG. NO.	DESCRIPTION	DWG. NO.	DESCRIPTION
	REFERENCE DRAWINGS		