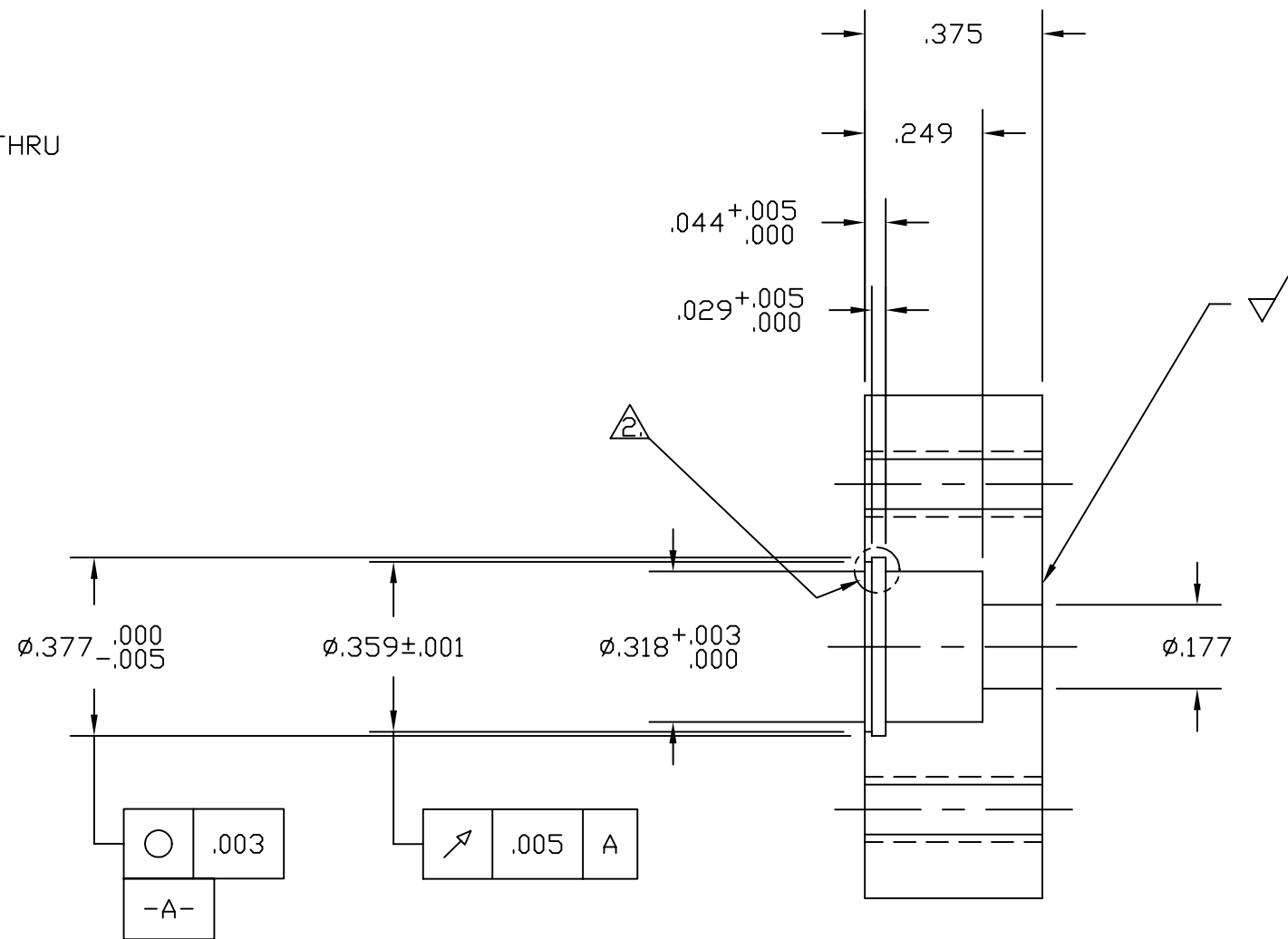
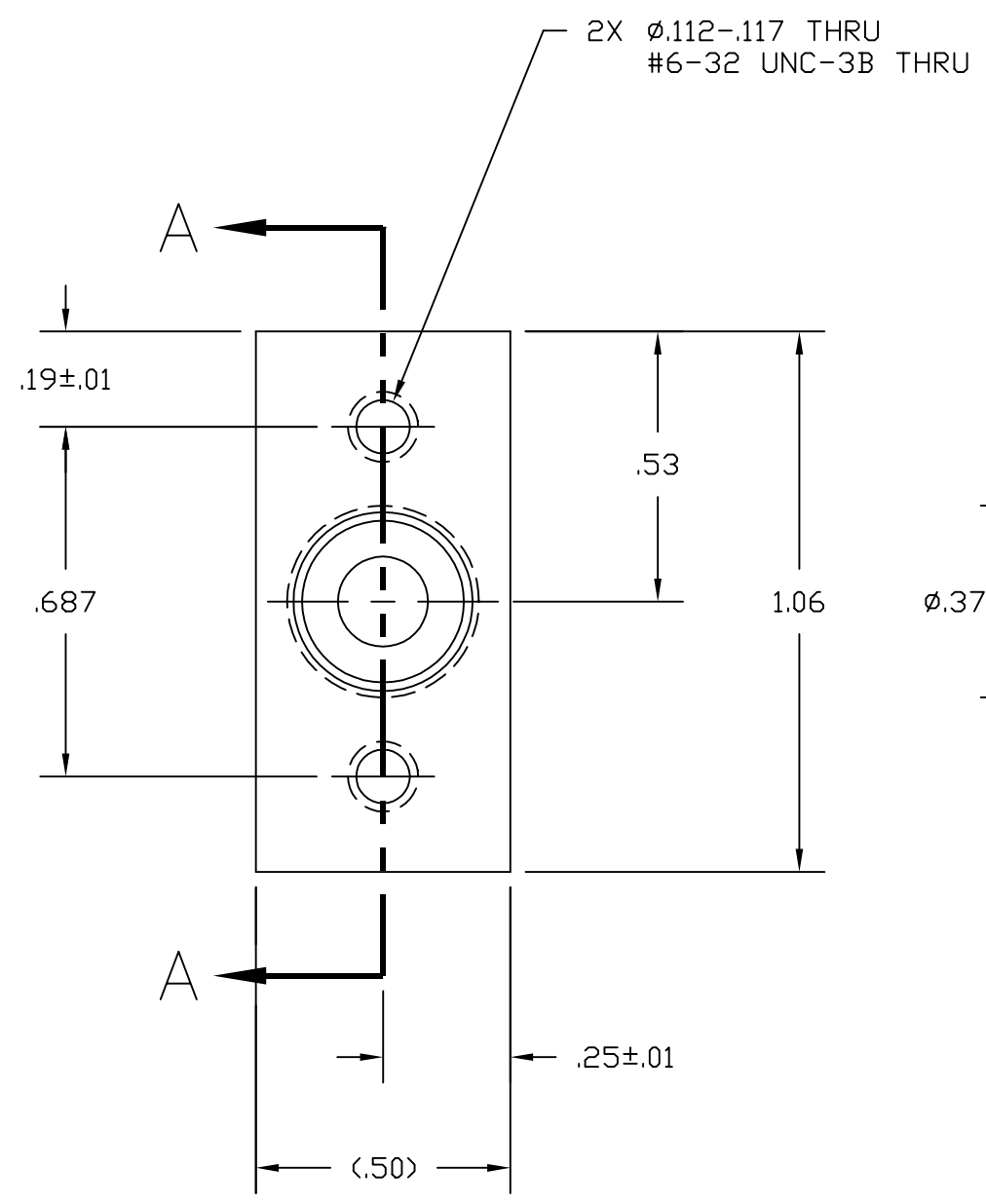


NOTES: (UNLESS OTHERWISE SPECIFIED)  
 1. INTERPRET DRAWING PER ANSI Y14.5M-1982.  
 2. GROOVE MAX. ALLOWABLE INTERNAL CORNER RADII .005.



SECTION A-A

		UNLESS OTHERWISE SPECIFIED DIMENSIONS ARE IN INCHES														LIGO CALIFORNIA INSTITUTE OF TECHNOLOGY MASSACHUSETTS INSTITUTE OF TECHNOLOGY	
		TOLERANCES: FRACTIONAL $\pm$ ANGULAR $\pm 0.5^\circ$ ANGULAR MACH $\pm$ BEND $\pm$ TWO PLACE DECIMAL $\pm .03$		THREE PLACE DECIMAL $\pm .005$ FINISHED SURFACE 32 MICROINCH AVERAGE BREAK CORNERS IN $\varnothing$ .005-.010 REMOVE ALL BURRS												CORE OPTIC COMPONENT CARRIER FOOT	
		MATERIAL: 6061 ALU, 1/2 X 3/8 BAR PER AMS QQ-A-225/8		HEAT TREAT: T6 PER AMS 2770												CONLEY 12-16-96	
DWG. NO.		DESCRIPTION		FINISH:												CAD FILE D961469-B.dwg	
REFERENCE DRAWINGS		USED ON:		NEXT ASS'Y: D961418		ISSUE DESCRIPTION										SIZE DWG. NO. B D961469-B-D	
						REV DESCRIPTION DCC SYS DET CDS VE CC BT CHECK DRWN DATE										SCALE NTS SHEET 1 OF 1	