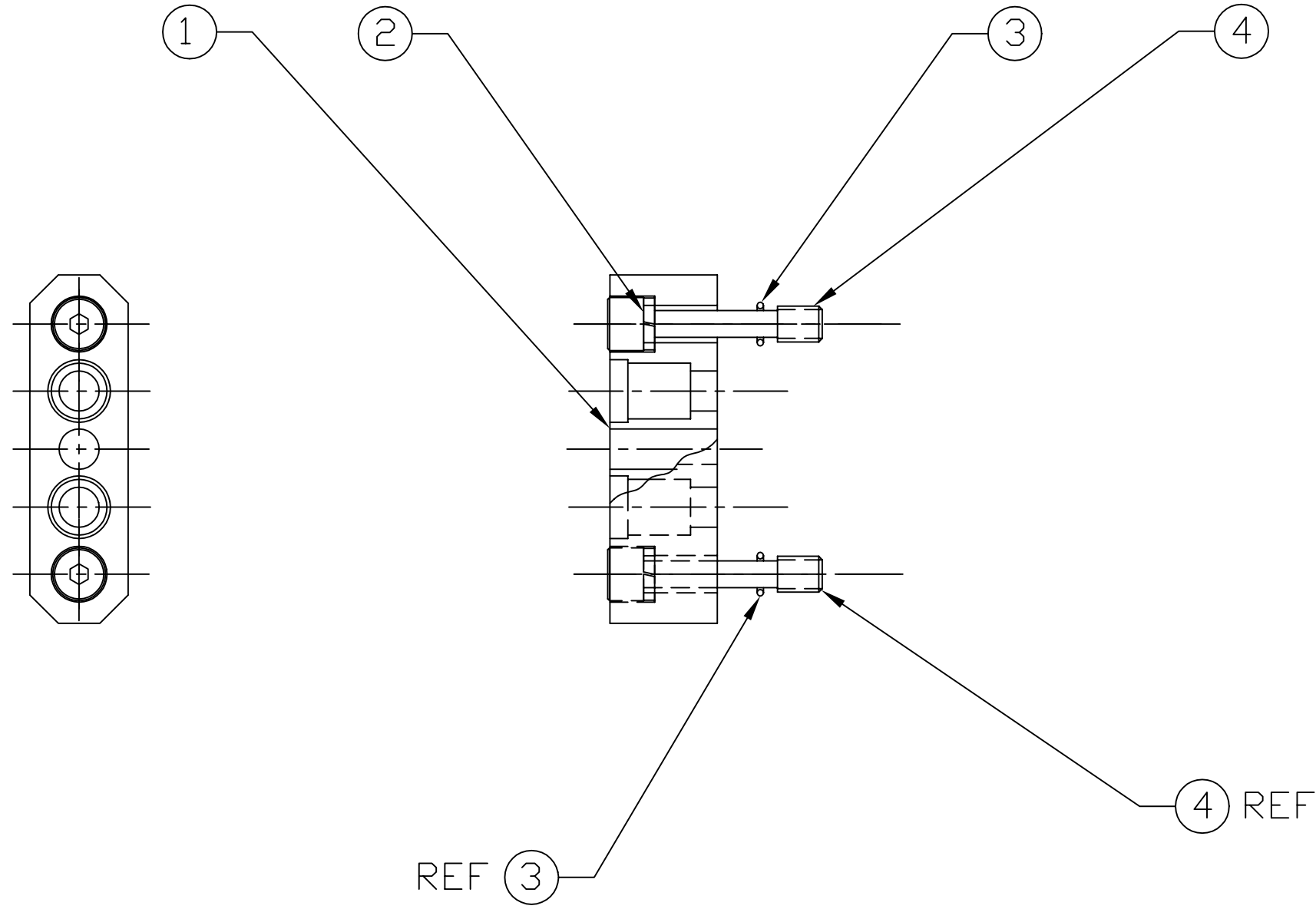


NOTES: (UNLESS OTHERWISE SPECIFIED)  
 1. FOR VENDOR INFORMATION, SEE TOP ASSEMBLY MATERIALS LIST D970006 OR D970007.



REF	QTY	PART or DRWG No.	NOMENCLATURE or DESCRIPTION	MATERIAL
4	2	D961431	CAPTIVE SCREW	-
3	2	D970001	CAPTIVE SCREW RETAINING RING	-
2	2	McM-Carr #98437A029	1/4 NDM HIGH-COLLAR LOCKWASHER	STAINLESS STEEL
1	1	D961448	CAPTIVE SCREW BRACKET, LOCATING	-
REF	QTY	PART or DRWG No.	NOMENCLATURE or DESCRIPTION	MATERIAL

PARTS and MATERIAL LIST

<p><b>UNLESS OTHERWISE SPECIFIED</b> DIMENSIONS ARE IN INCHES</p> <p>TOLERANCES:            FRACTIONAL ±            ANGULAR ±            ANGULARMACH ± BEND ±            TWO PLACE DECIMAL ±</p>		<p>THREE PLACE DECIMAL ±            FINISHED SURFACE RMS            BREAK CORNERS IN OUT            REMOVE ALL BURRS</p>		<p><b>LIGO</b> CALIFORNIA INSTITUTE OF TECHNOLOGY            MASSACHUSETTS INSTITUTE OF TECHNOLOGY</p>											
				<p>CORE OPTIC COMPONENT CARRIER            CAPTIVE SCREW BRACKET ASSEMBLY,            LOCATING</p>											
<p>MATERIAL: _____ HEAT TREAT: _____ FINISH: _____</p>		<p>DCN No. E960157</p>													
<p>USED ON: _____ NEXT ASS'Y: D961450 &amp; D961468</p>		<p>00 RELEASE FOR FAB</p>													
<p>REFERENCE DRAWINGS</p>		<p>ISSUE DESCRIPTION</p>													
<p>6</p>		<p>3 2 1</p>													

CAD FILE: D961472-Adwg  
 SCALE: NTS  
 SHEET: 1 OF 1