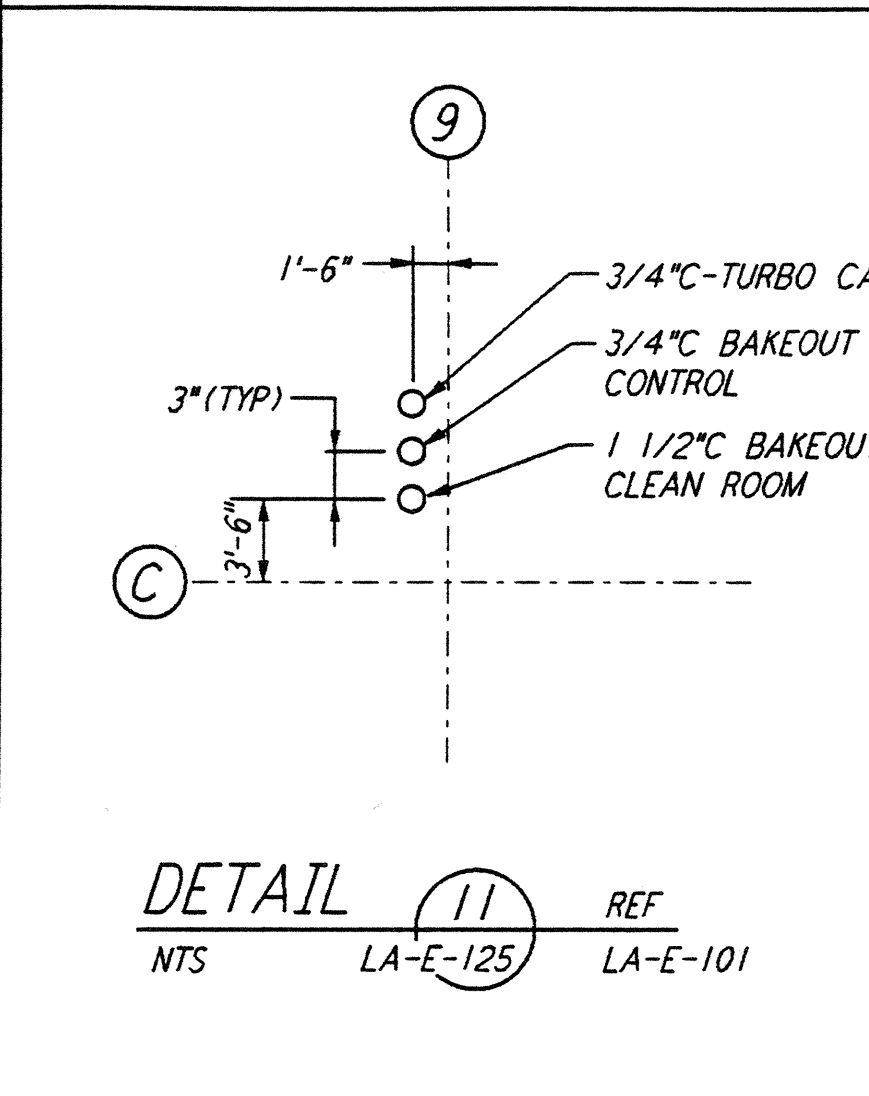
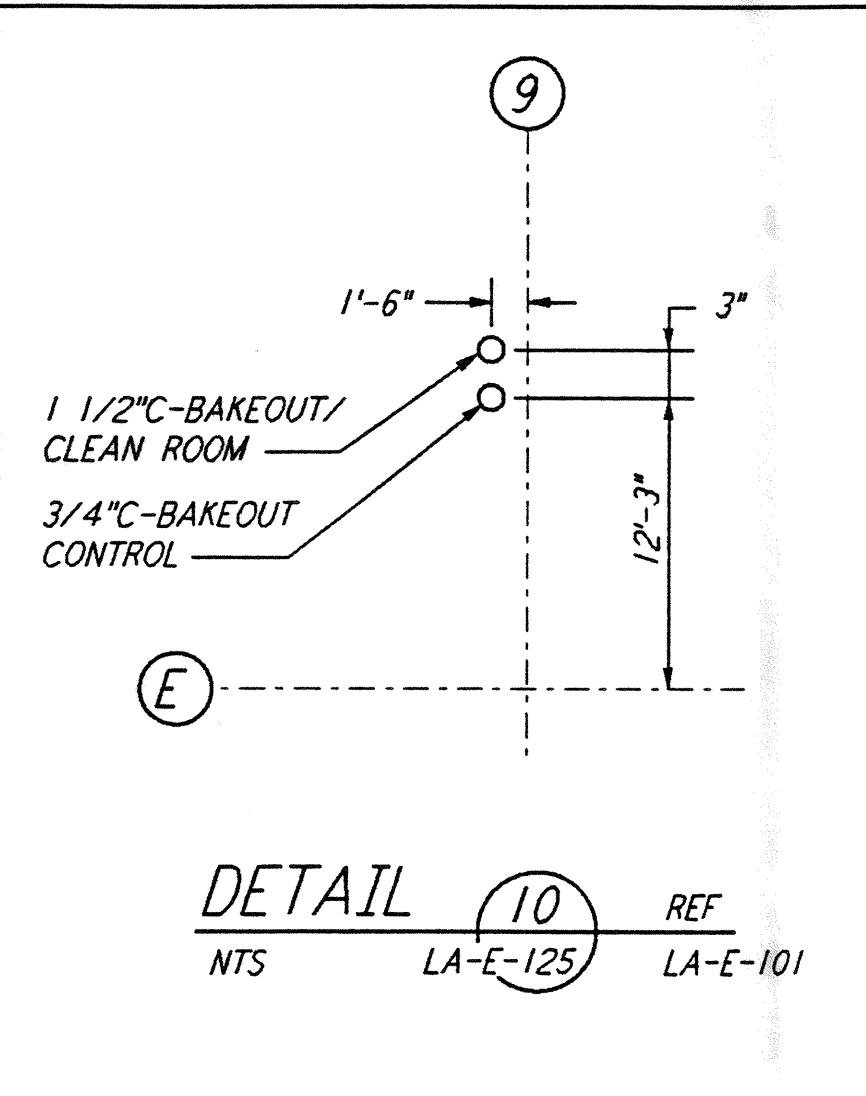
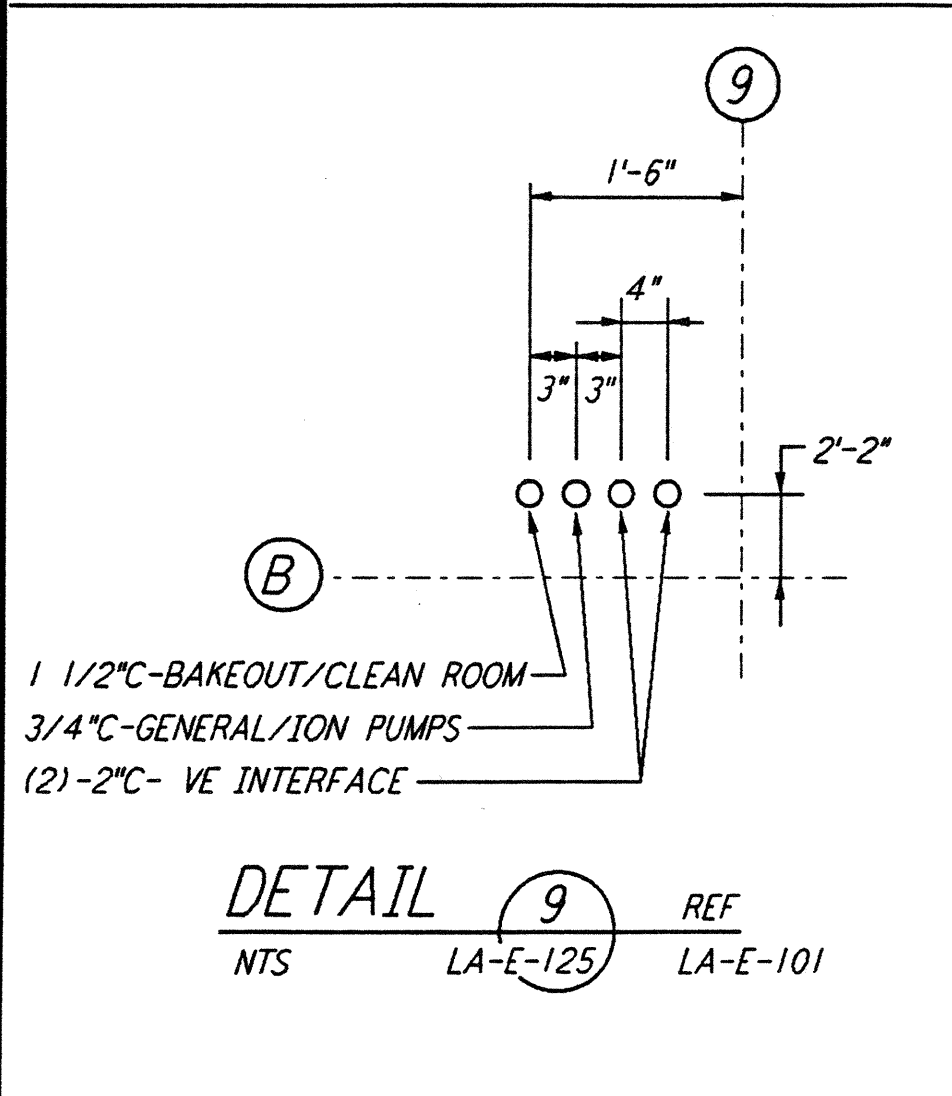
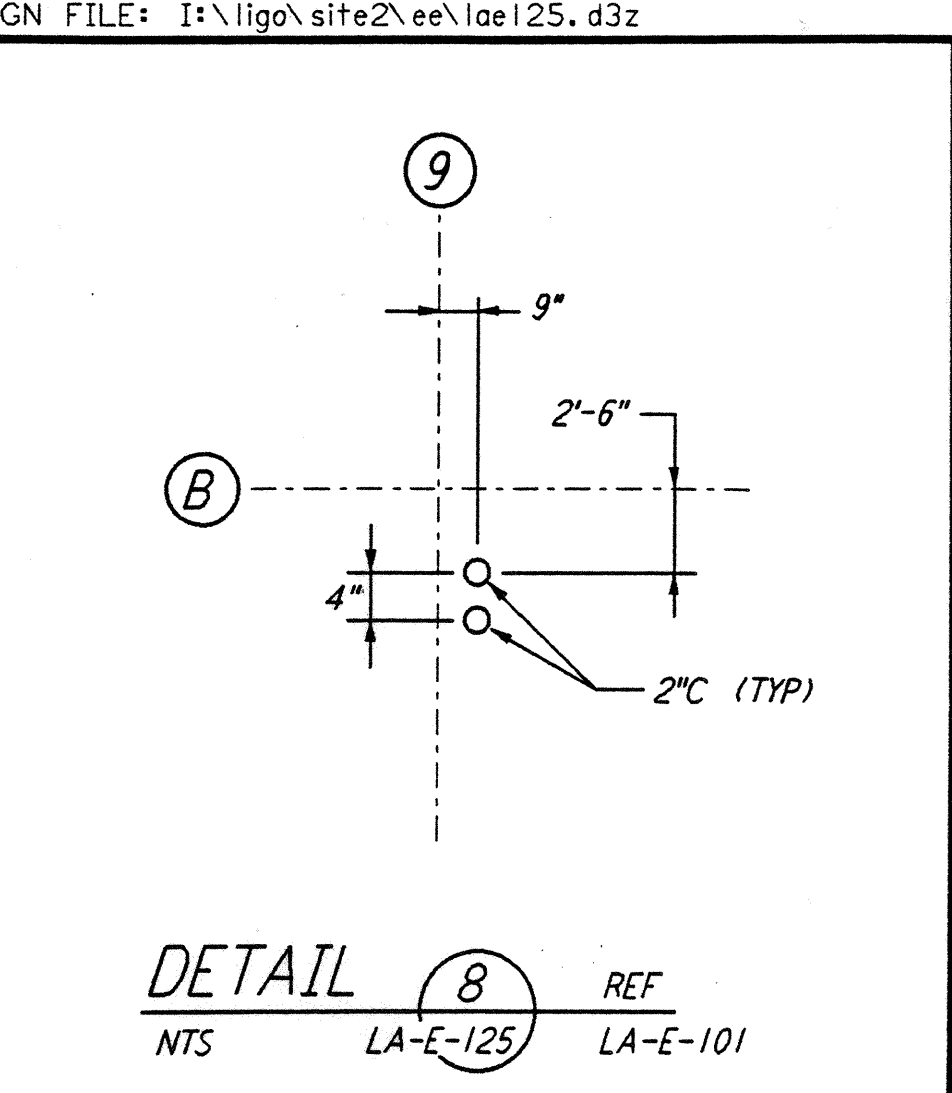
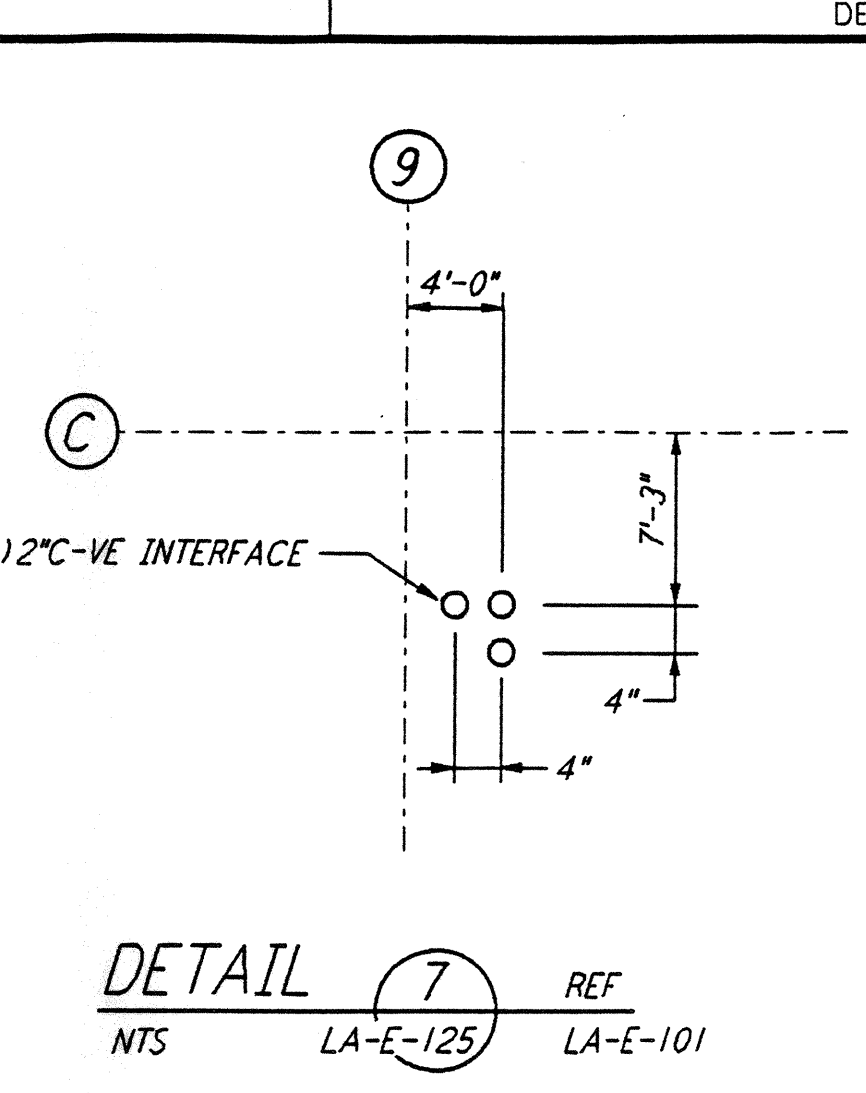
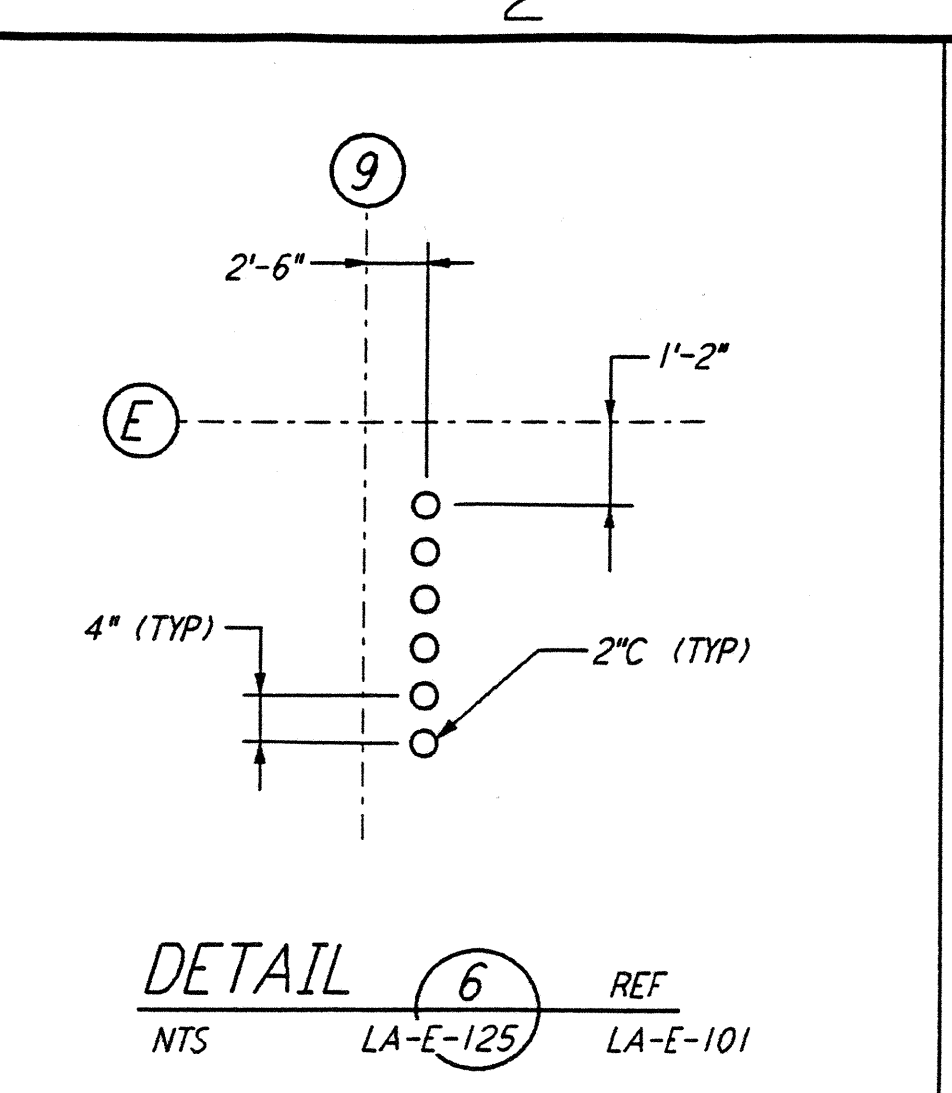
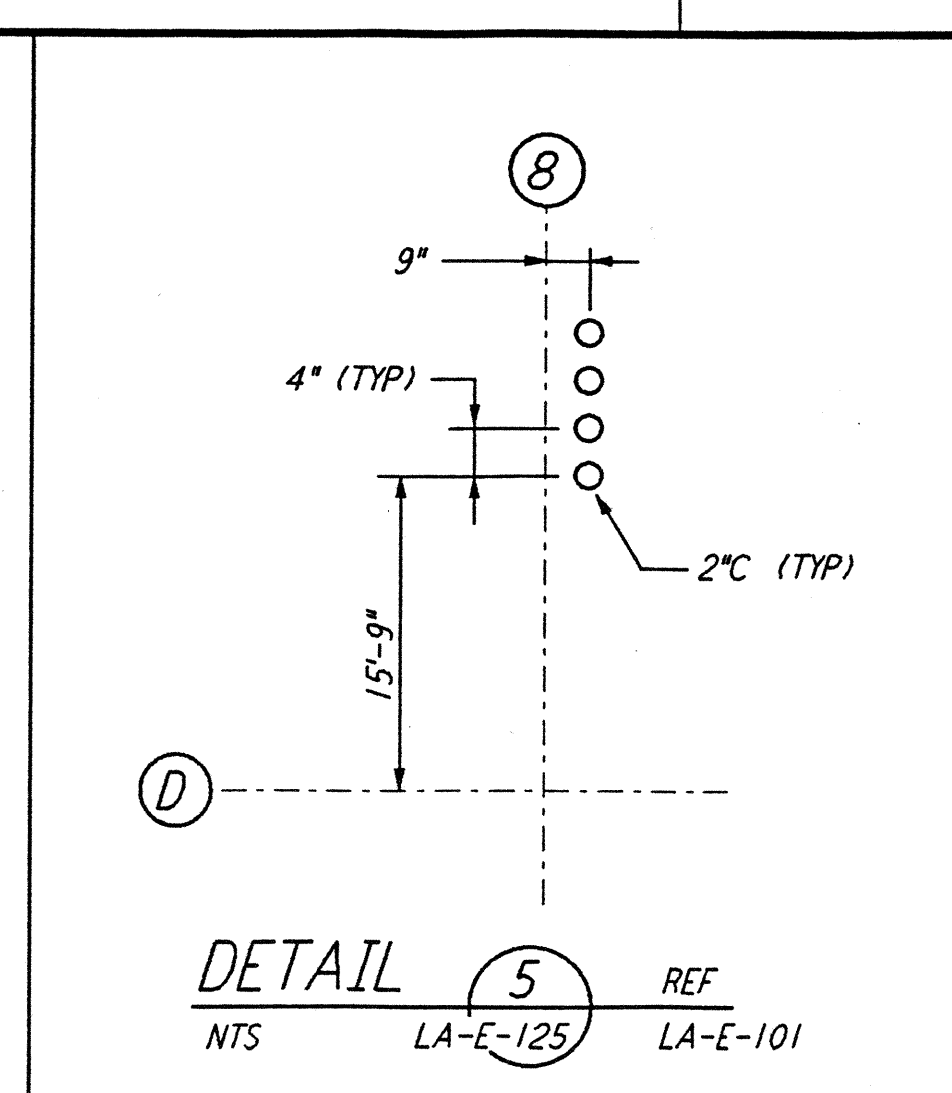
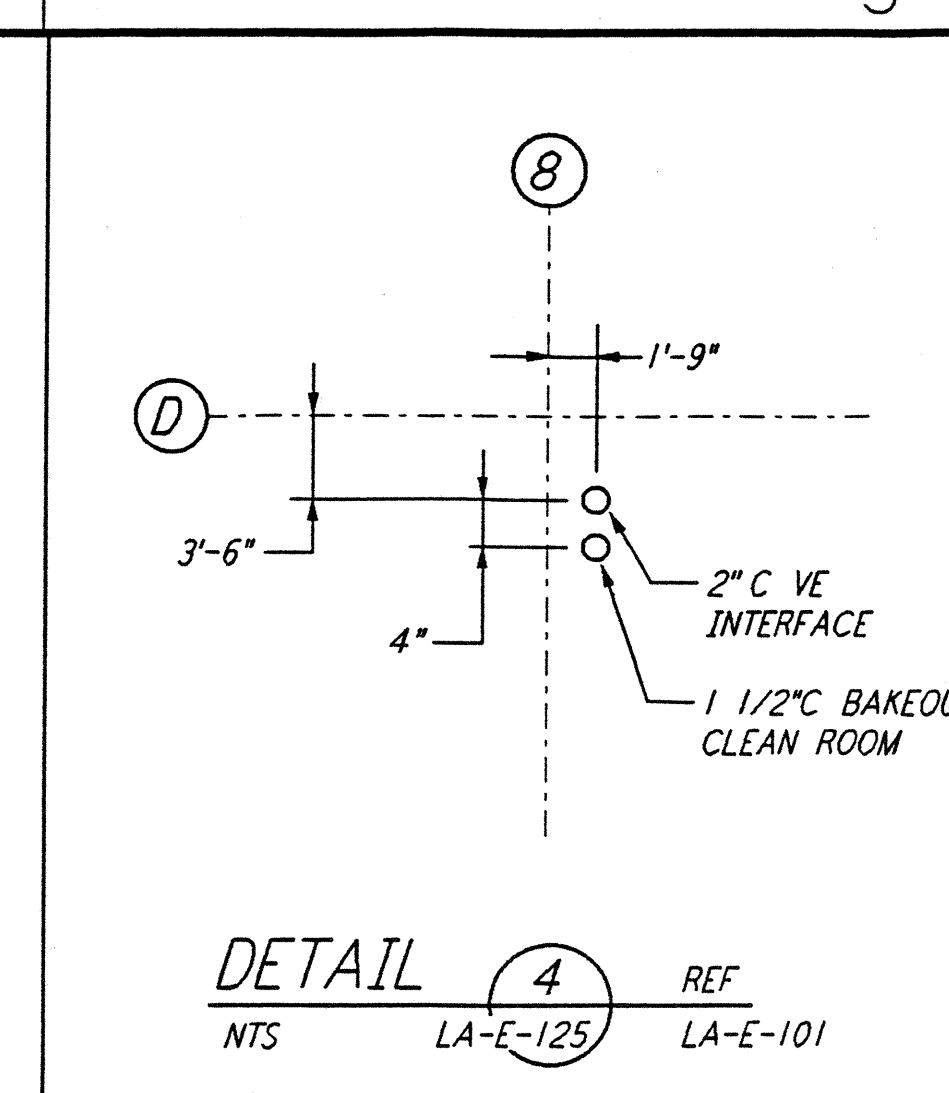
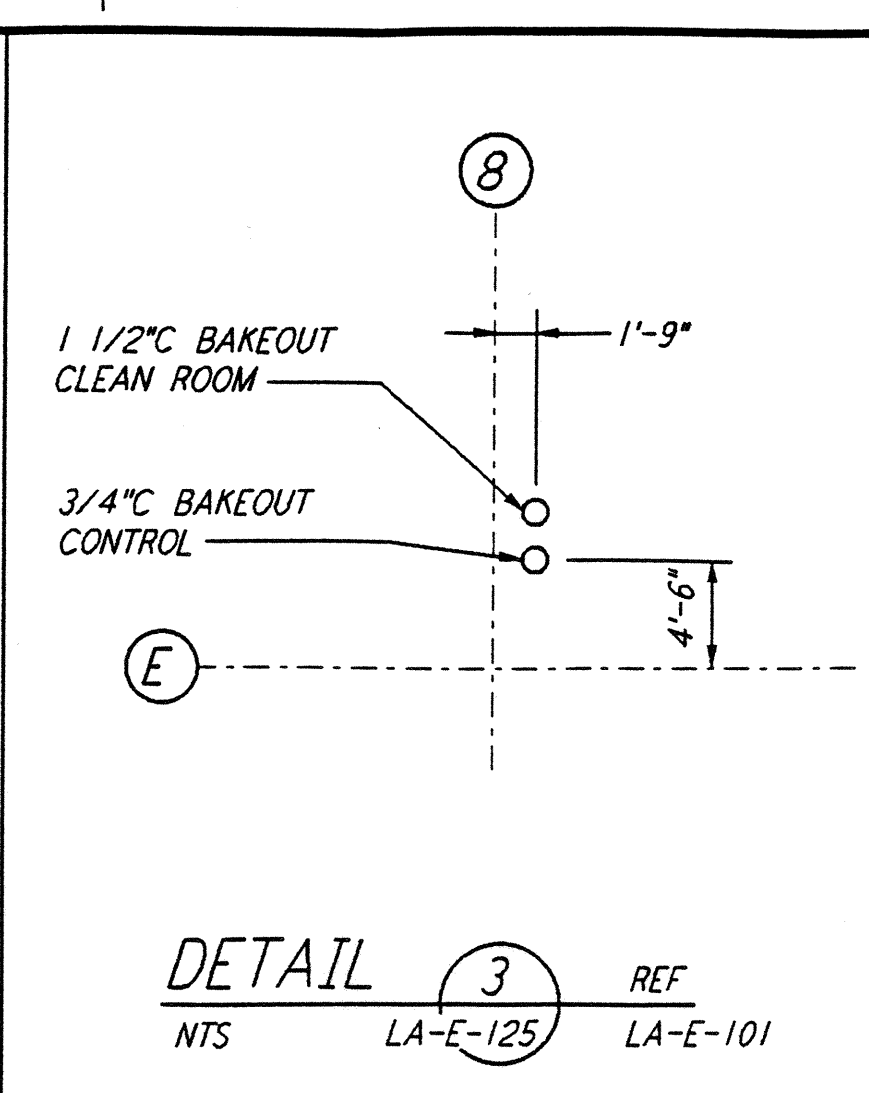
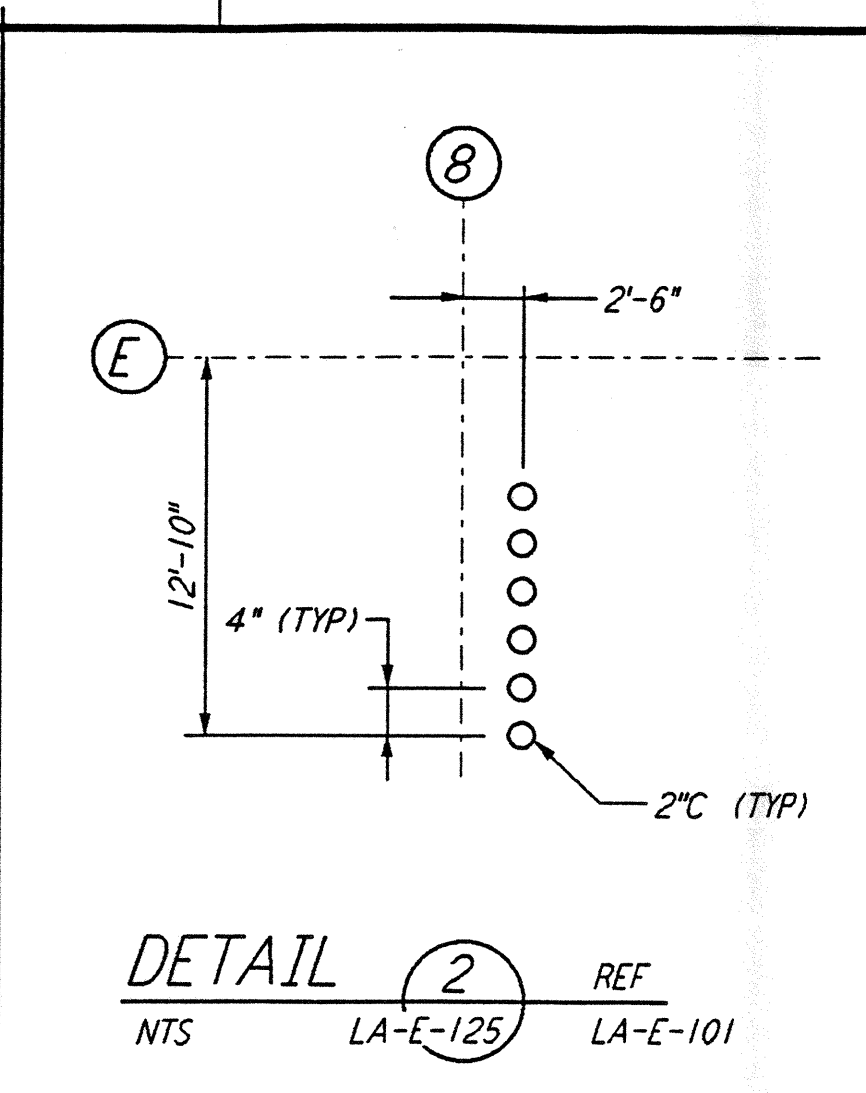
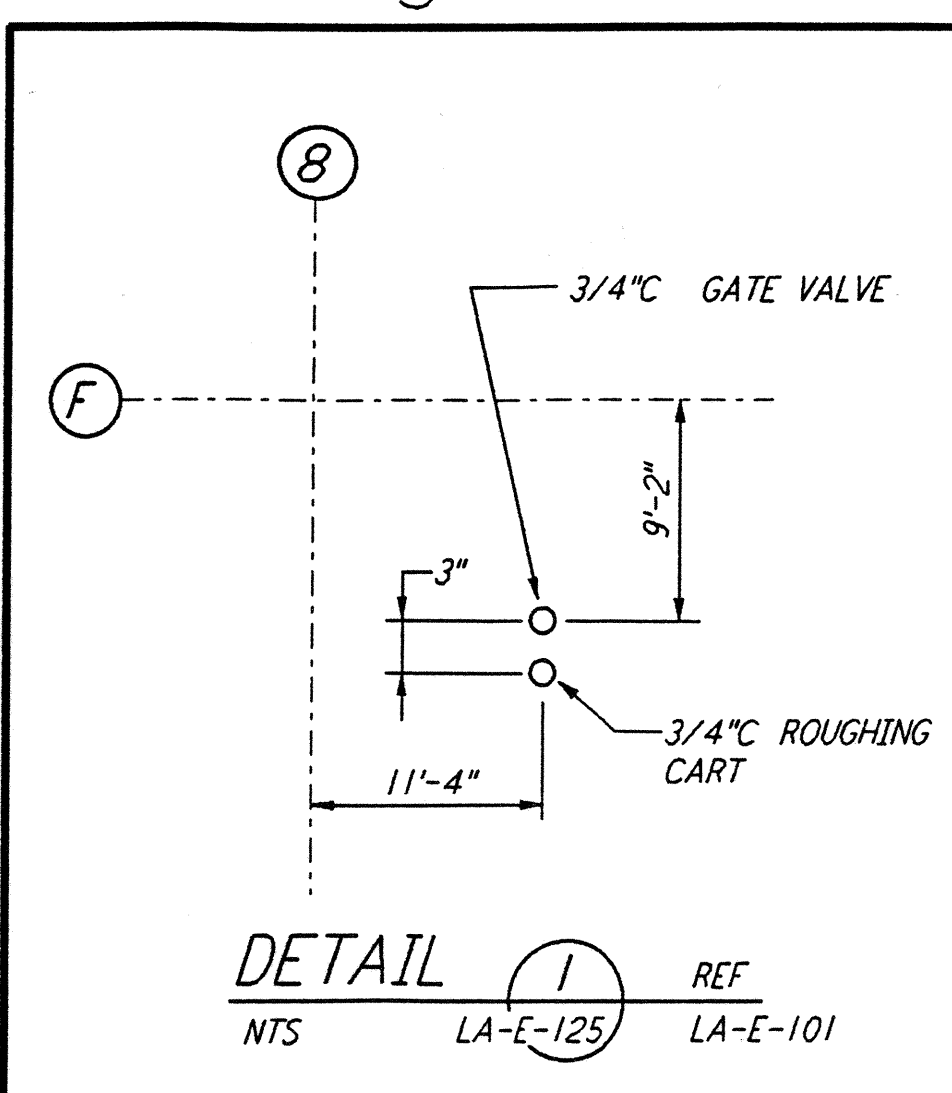


not be reproduced, copied, loaned, exhibited, or used in any other way, except by written consent from PARSONS to the borrower.

This document and the design it covers are the property of PARSONS. They are loaned only with the borrower's expressed written agreement that they will

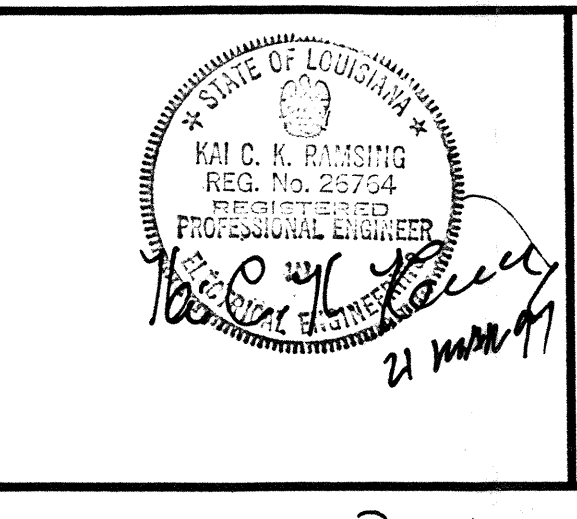


NOTE: THE DETAILS ON SHEETS LA-E-123, LA-E-124 AND LA-E-125 SUPERSEDE, ENTIRELY THE DETAILS ON SHEET LA-E-114

LIGO-D961481-00-0

DRAWING NO.	DESCRIPTION	NO.	DATE	BY	CHKD	ENGR	PROJ.	DESCRIPTION

ISSUED FOR CONSTRUCTION			
DRAWN	J. G.	3-21-97	
CHECKED	BE	3-21-97	
ENGINEER		3-21-97	
PROJ		3-21-97	



PARSONS
 100 WEST WALNUT STREET
 PASADENA, CALIFORNIA

LIGO
 CALIFORNIA INSTITUTE OF TECHNOLOGY
 MASSACHUSETTS INSTITUTE OF TECHNOLOGY

LASER INTERFEROMETER
 GRAVITATIONAL-WAVE OBSERVATORY
 SITE NO. 2 - LIVINGSTON, LOUISIANA

TITLE	SCALE	CONTRACT NUMBER	PROJECT NUMBER
ELECTRICAL CORNER STATION LVEA AREAS 101, 102, 103, 104 DETAILS	NONE	PPI50969	8094
SHEET NUMBER		REVISIONS	
LA-E-125			