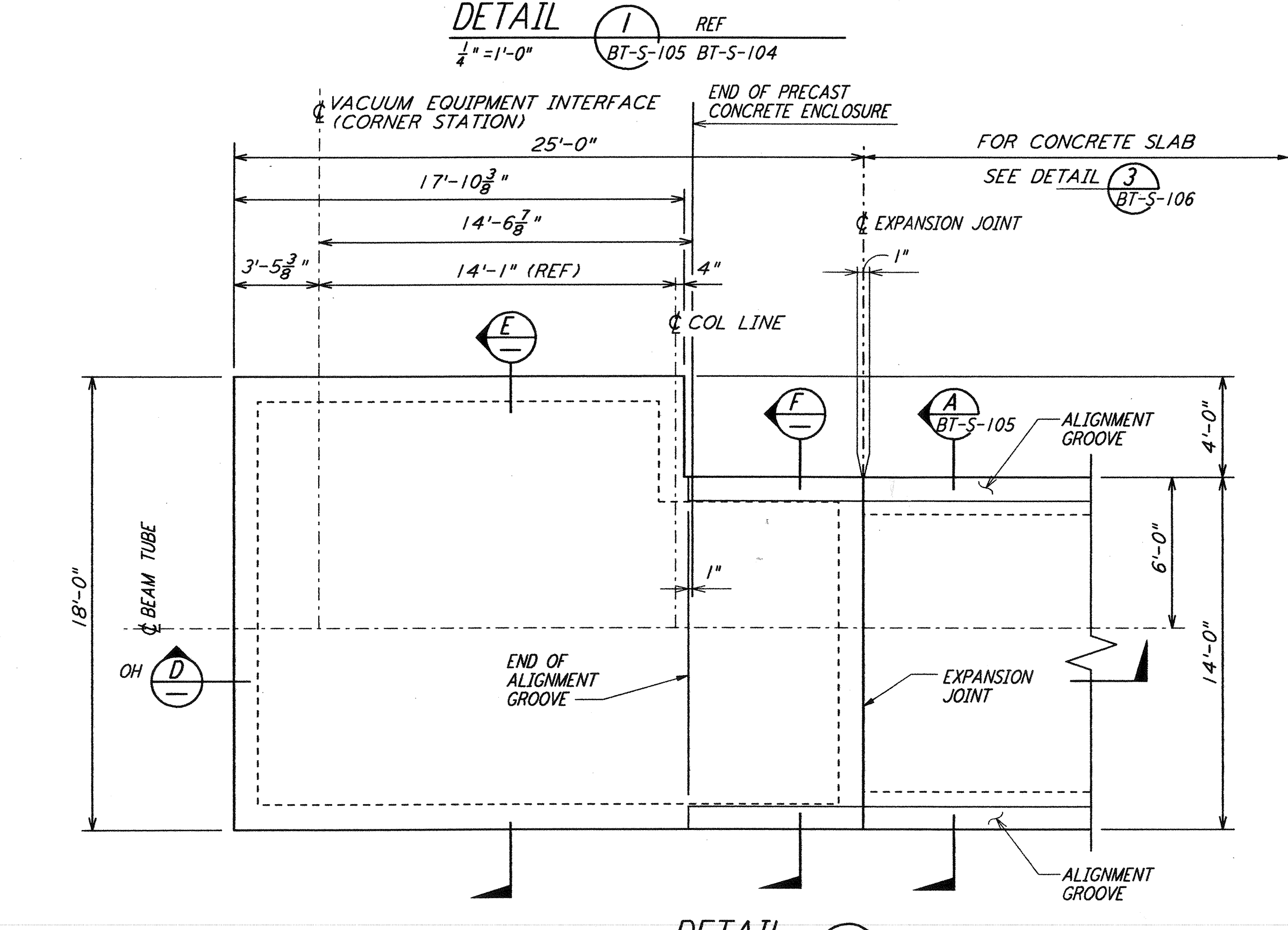


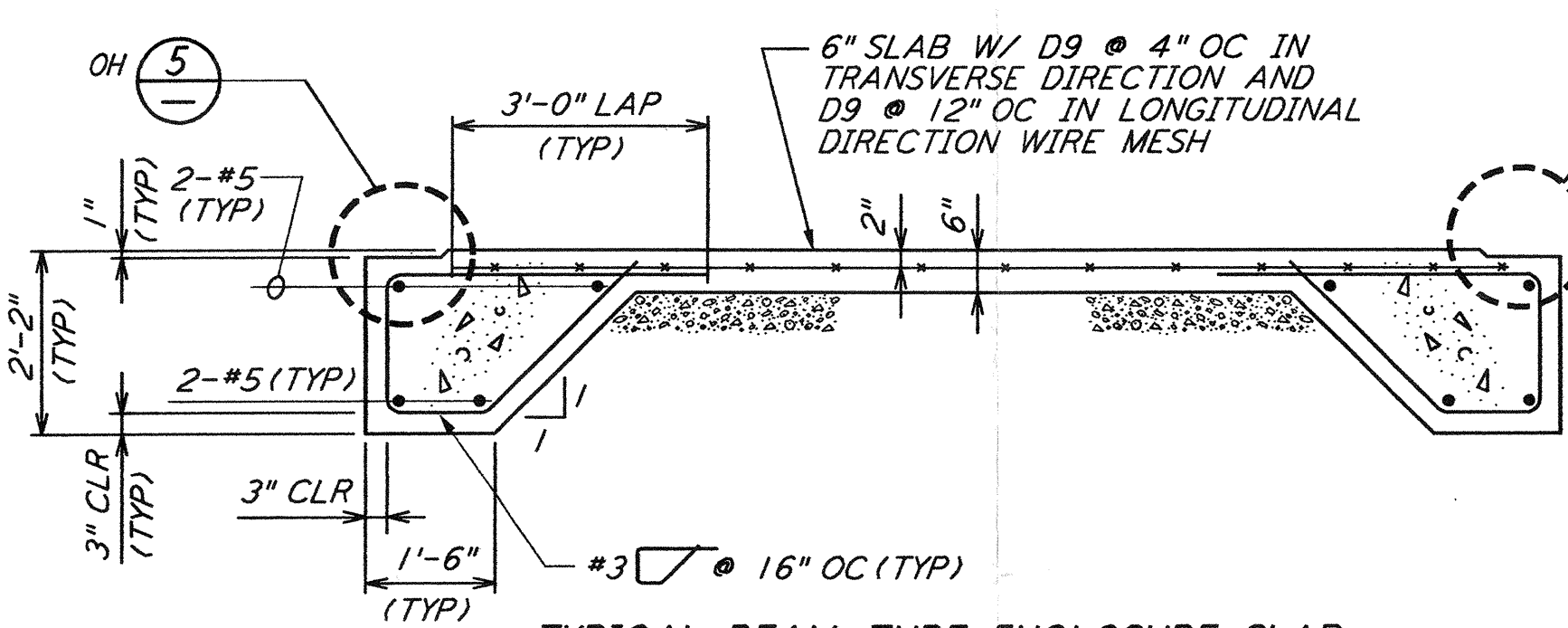
DETAIL 1 REF 1/4" = 1'-0" BT-S-105 BT-S-104

DETAIL 2 REF 1/4" = 1'-0" BT-S-105 BT-S-104

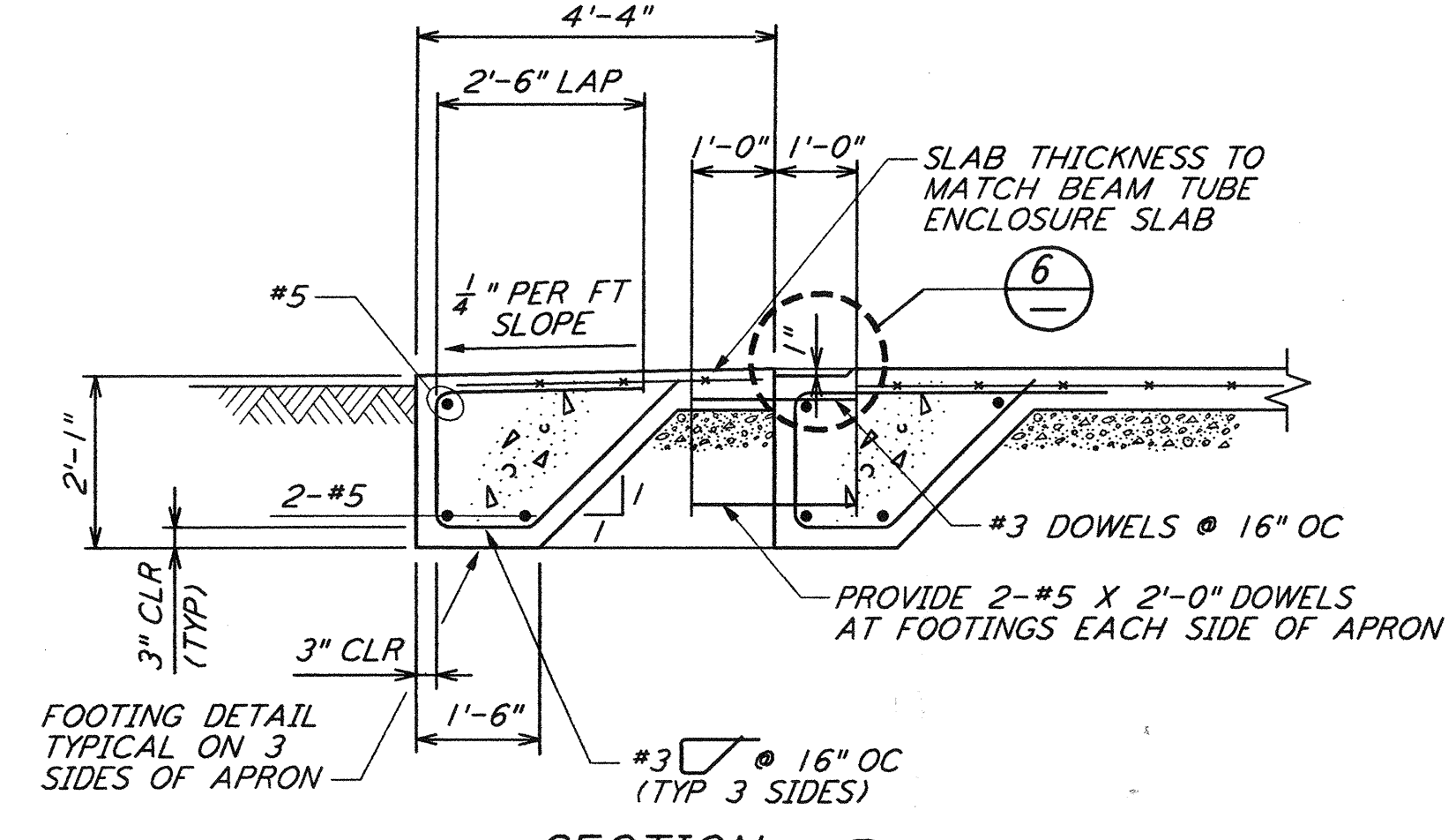
DETAIL 3 REF 1/4" = 1'-0" BT-S-105 BT-S-104



DETAIL 4 REF 1/4" = 1'-0" BT-S-105 BT-S-104



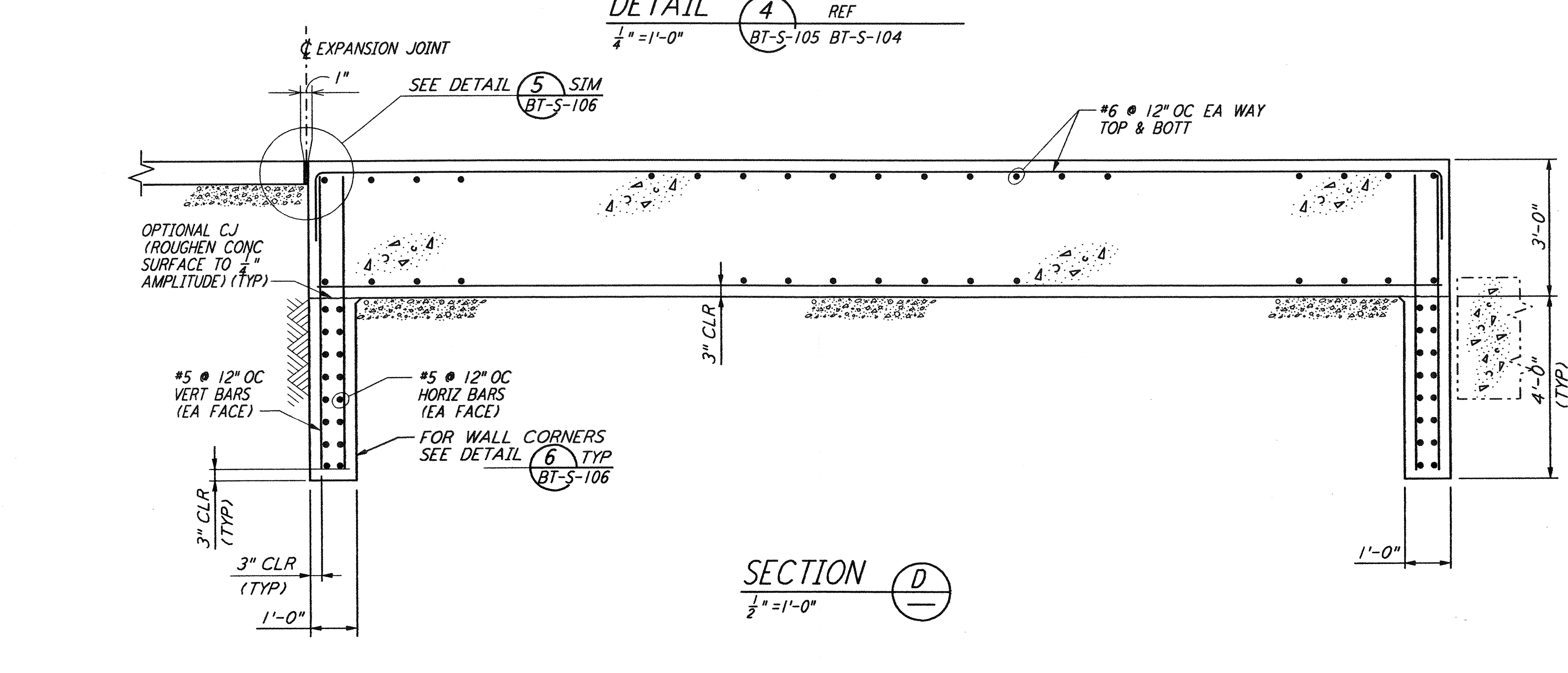
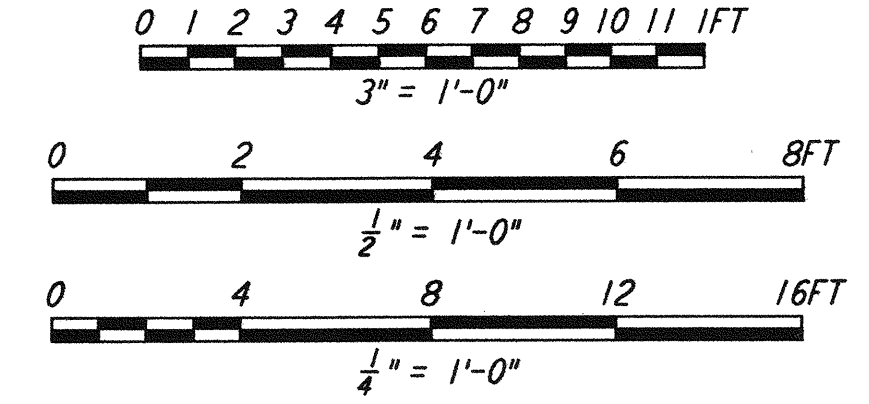
TYPICAL BEAM TUBE ENCLOSURE SLAB SECTION A REF 1/2" = 1'-0" BT-S-105 BT-S-106



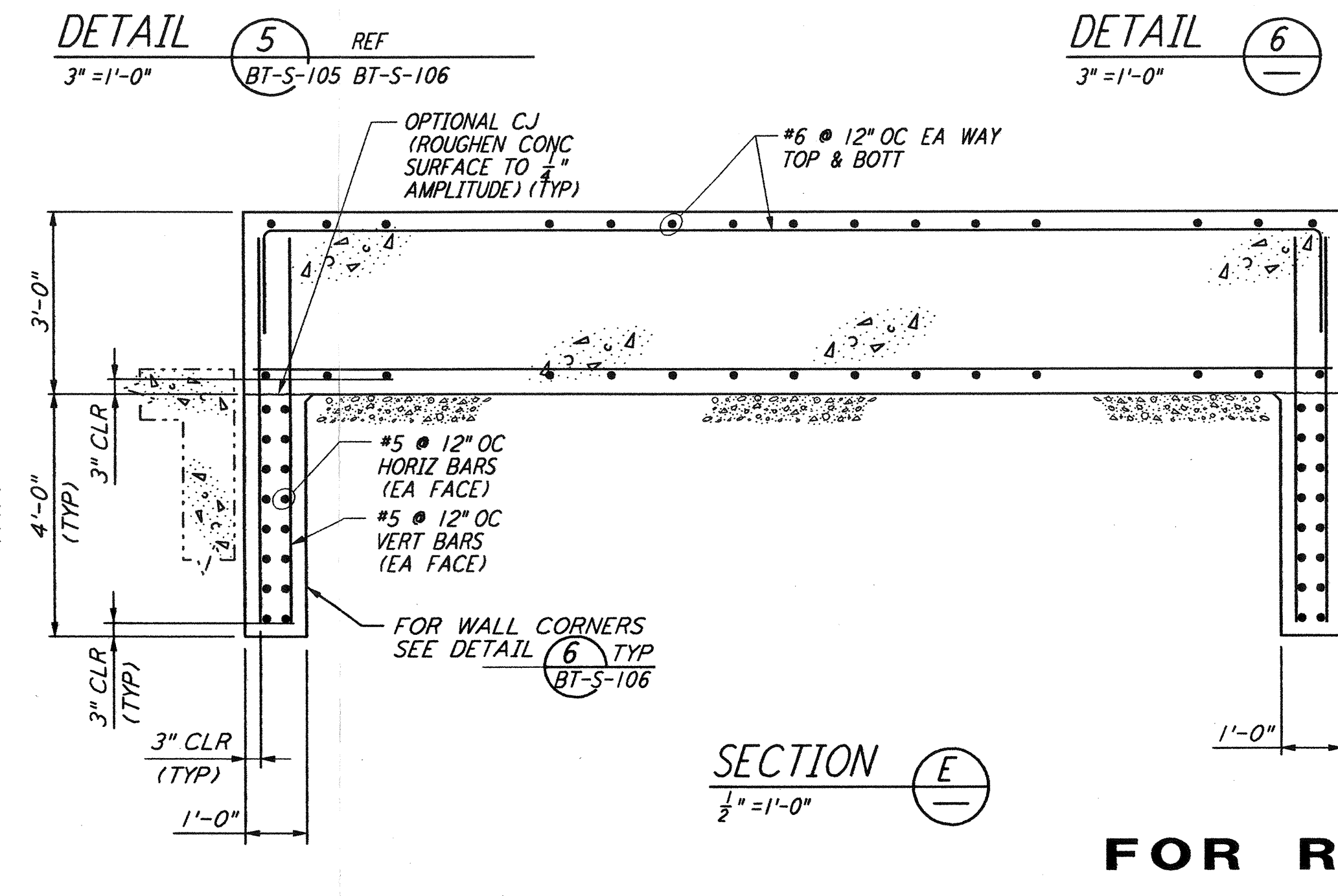
SECTION B REF 1/2" = 1'-0"

SECTION C REF 1/2" = 1'-0"

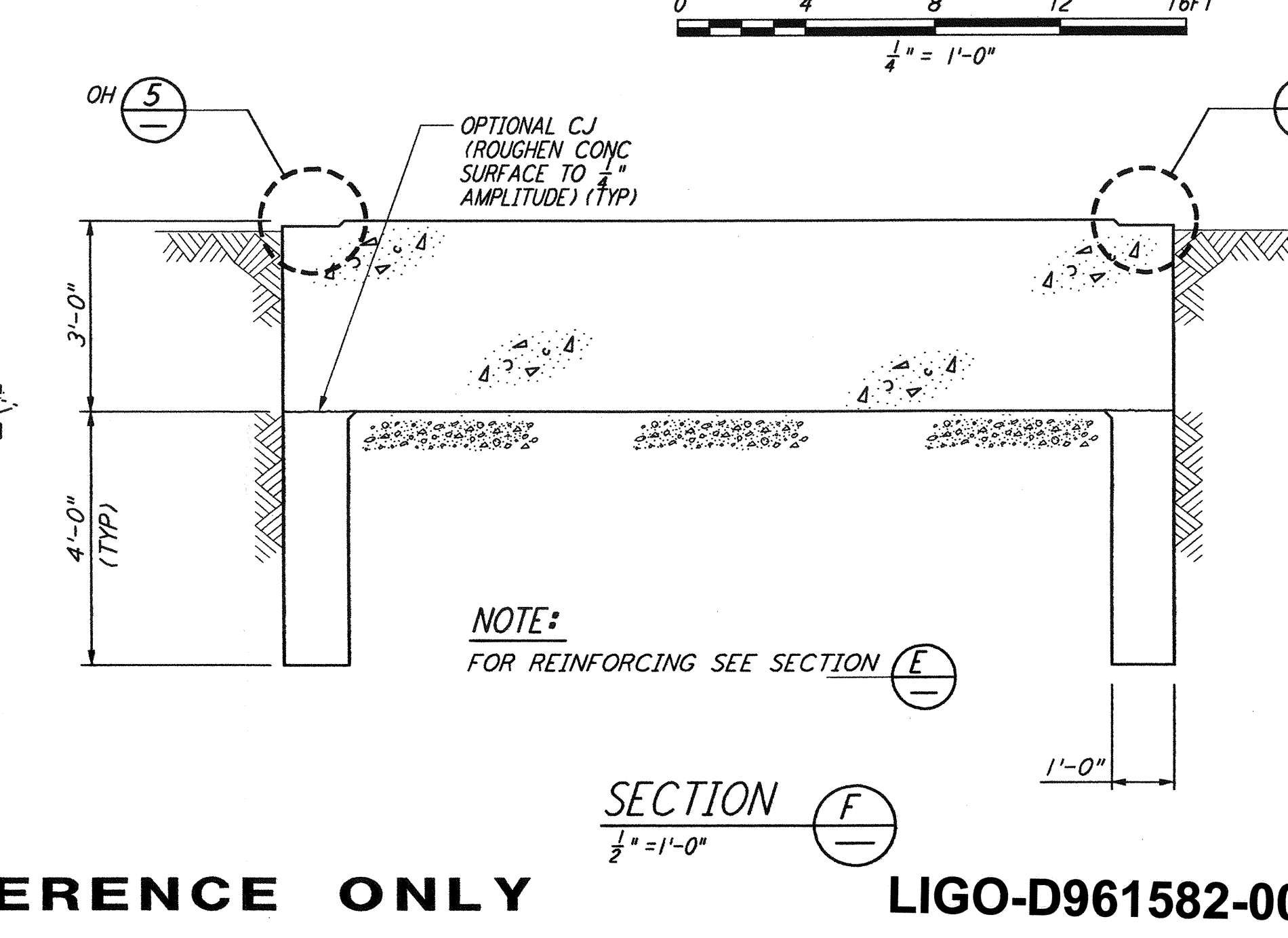
NOTE: 1. FOR GENERAL NOTES, ABBREVIATIONS AND LEGEND SEE DRAWING BT-S-101.



SECTION D REF 1/2" = 1'-0"



SECTION E REF 1/2" = 1'-0"



SECTION F REF 1/2" = 1'-0"

FOR REFERENCE ONLY LIGO-D961582-00-0

NO.	DATE	BY	CHKD	ENGR	PROJ	DESCRIPTION
0	1-22-99	MEI			MDW	ISSUED FOR AS BUILT
A	5-10-96	MCS				ISSUED FOR BID

DRAWN	SH
CHECKED	
ENGINEER	
PROJ	
<b>AS-BUILT DRAWINGS</b>	

**PARSONS**

100 WEST WALNUT STREET  
PASADENA, CALIFORNIA

**LIGO**

CALIFORNIA INSTITUTE OF TECHNOLOGY  
MASSACHUSETTS INSTITUTE OF TECHNOLOGY

LASER INTERFEROMETER GRAVITATIONAL-WAVE OBSERVATORY BTE INSTALLATION - HANFORD, WA			
TITLE	SCALE	CONTRACT NUMBER	PROJECT NUMBER
STRUCTURAL BEAM TUBE ENCLOSURE SECTIONS & DETAILS SHEET I	AS NOTED	PP150969	8094
SHEET NUMBER		REVISIONS	
<b>BT-S-105</b>		<b>BT-S-105</b>	

Thu Jan 21 13:38:46 1999 C:\PI01\LDUE\S3\36B2.DWG 52085 KA\36B2\st105hp.rvt LIGOBTF.BDR