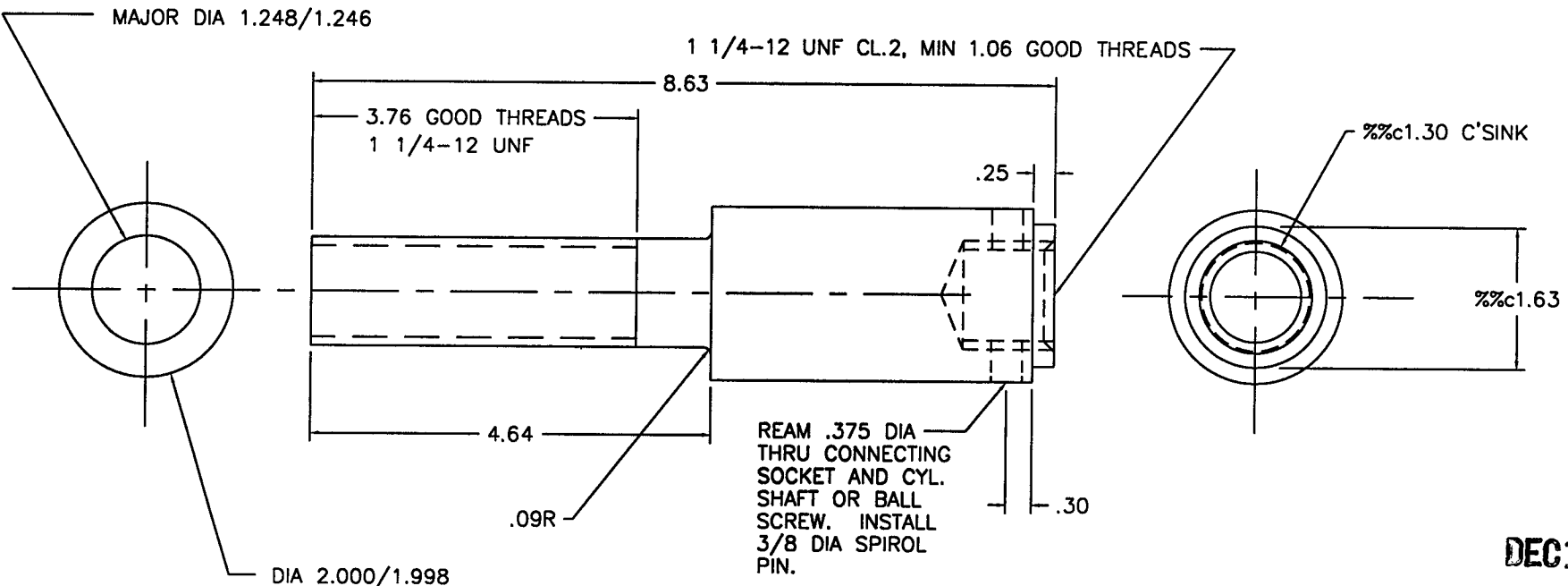


REVISIONS			
REV.	DESCRIPTION	APPROVED	DATE
A	RELEASED	AJL	10/2/96
B	ADDED C'SINK	AJL	10/15/96
C	4.64 DIM WAS 4.14	AJL	10/18/96



DEC 19 1996

PSI DWG # V049-8-504

ITEM	QTY.	PART NO.	DESCRIPTION
PART LIST			MATERIAL SPECIFICATION: T304L
<small>UNLESS OTHERWISE SPECIFIED DIMENSIONS ARE IN INCHES TOLERANCES ARE:</small> <small>DECIMALS .XX ± .01 ± 10' FINISH 32/</small> <small>.XXX ± .005</small> <small>UNSPECIFIED FILLETS: R.015 BREAK EDGES .010 ± 45° REMOVE ALL BURRS</small> <small>THIRD ANGLE PROJECTION</small>		<small>CONTRACT OR SALES ORDER NO.</small> <small>APPR. WT.</small> <small>APPROVALS</small>	 GNB Corporation <small>SCIENTIFIC AND INDUSTRIAL EQUIPMENT</small> <small>30971 San Benito Ct. HAYWARD, CALIFORNIA 94544 (510) 441-1900 FAX: (510) 441-0939</small>
<small>DO NOT SCALE DRAWING</small> <small>CADD FILE NAME</small>		<small>DRAFTER</small> AJL <small>CHECKER</small> <small>ENGINEER</small> <small>DATE</small> 10/15/96	
B103793 USED ON		A103733C	TITLE CONNECTING SOCKET, CARRIAGE, LIGO G44, G48 DWG. NO. 103733 SCALE: NONE SHEET 1 OF 1

REV. C
A
DWG. NO. 103733