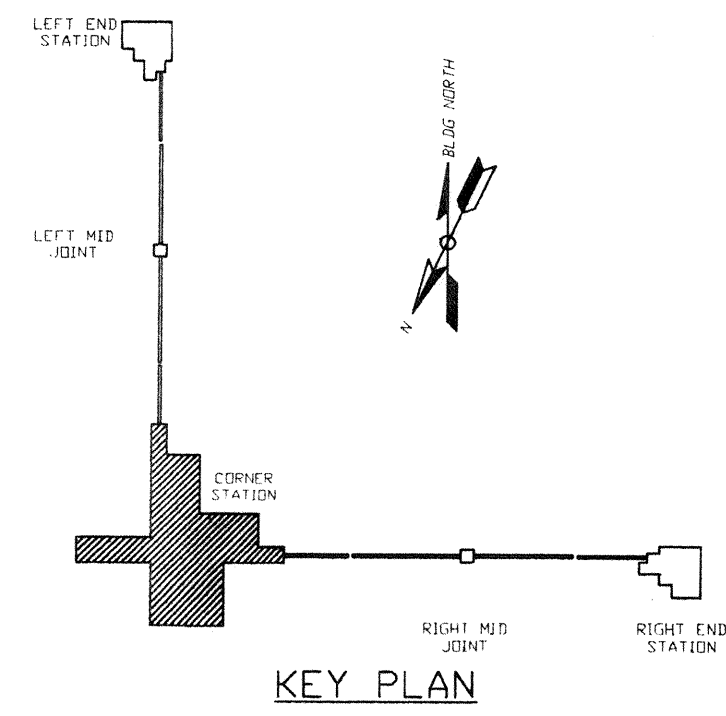
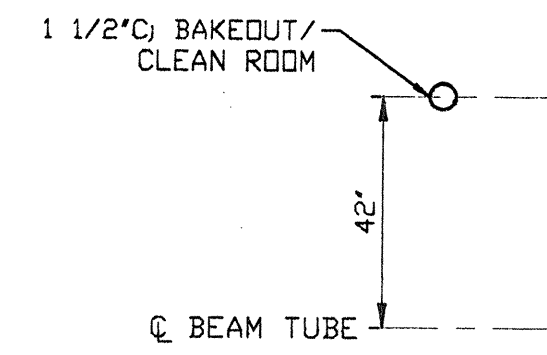


- NOTES:**
- 1.) PROVIDE PULL TAPE IN EACH CONDUIT.
 - 2.) ALL UNDERGROUND INSTALLATION AND DETAILS ARE BY OTHERS.
 - 3.) POWER SOURCE SHALL BE AS FOLLOWS:
 A) BAKEDOUT/CLEAN ROOM 480/277VAC
 B) ROUGHING CART 480/277VAC
 C) GATE VALVE 480/277VAC
 D) GENERAL/ION PUMPS 120VAC
 E) BAKEDOUT CONTROL 120VAC
 F) TURBO CART 208/120VAC
 - 4.) FOR EQUIPMENT POWER REQUIREMENTS, REFER TO PSI DOCUMENT #V049-1-047.
 - 5.) FOR GENERAL NOTES & LEGEND SEE PSI DWG. #V049-3-001 SHT. 1.
 - 6.) FOR LIST OF CIVIL CONTRACTOR REFERENCE DWGS. WITH CURRENT REVISIONS SEE PSI DWG. #V049-3-001 SHT. 2.

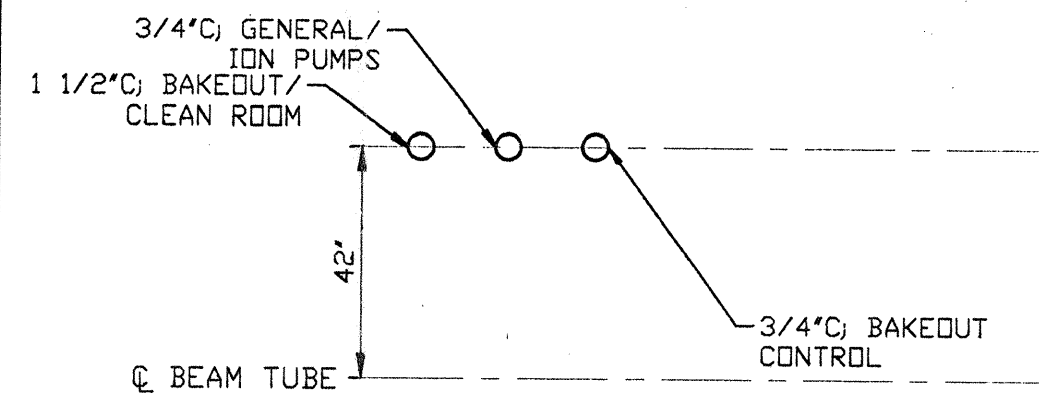
NOT FOR CONSTRUCTION



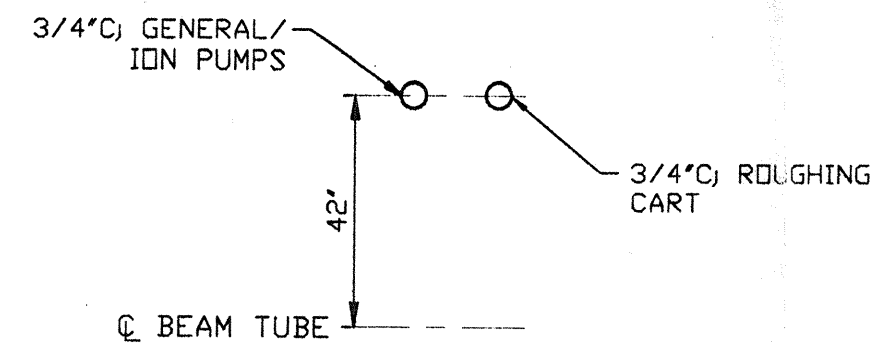
<p>PROPRIETARY AND CONFIDENTIAL</p> <p>THIS DOCUMENT CONTAINS PROPRIETARY INFORMATION BELONGING TO PROCESS SYSTEMS INTERNATIONAL, INC. OR ITS AFFILIATED COMPANIES AND SHALL BE USED ONLY FOR THE PURPOSE FOR WHICH IT WAS SUPPLIED. IT SHALL NOT BE COPIED, REPRODUCED OR OTHERWISE USED, NOR SHALL SUCH INFORMATION BE FURNISHED IN WHOLE OR IN PART TO OTHERS EXCEPT IN ACCORDANCE WITH THE TERMS OF ANY AGREEMENT UNDER WHICH IT WAS SUPPLIED OR WITH THE PRIOR WRITTEN CONSENT OF PROCESS SYSTEMS INTERNATIONAL, INC. AND SHALL BE RETURNED UPON REQUEST.</p>		<p>UNLESS OTHERWISE SPECIFIED DIMENSIONS ARE IN INCHES</p> <p>TOLERANCES: FRACTIONAL ± ANGULAR/ARCH 30°-30° BEND 30° TWO PLACE DECIMAL ± .01 THREE PLACE DECIMAL ± .005 FINISHED SURFACE RMS BREAK CORNERS IN REMOVE ALL BURRS</p>		<p>DD NOT SCALE THIS DRAWING 0 ISSUE FOR INSTALLATION</p>		<p>USED ON: REV 0 DESCRIPTION</p>		<p>NEXT ASS'Y:</p>		<p>ISSUE DESCRIPTION</p>		<p>CHKD: [Signature] DRWN: [Signature] DATE: 12.03.96 DED# 0374</p>		<p>CAD FILE: V0493624\3624S1 SIZE: D DWG. NO: V049-3-624 REV: 0</p>	
DWG. NO.	DESCRIPTION	DWG. NO.	DESCRIPTION	SCALE: 1" = 10'-0"		SHEET: 1 OF 2		PROJECT: LIGO - D970076-024		DRAWN BY: [Signature]		DATE: 12.03.96		REV: 0	



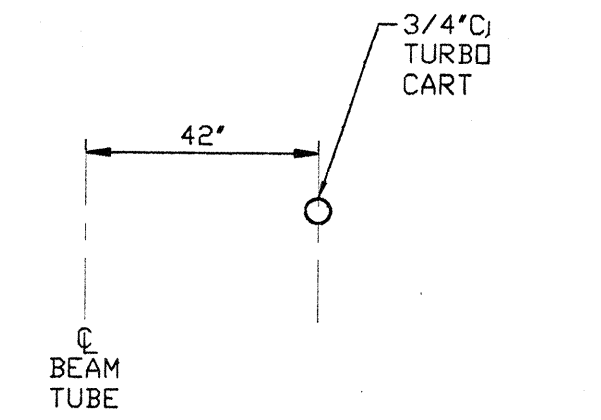
DETAIL 1 REF.
NO SCALE V049-3-624 SHT. 1



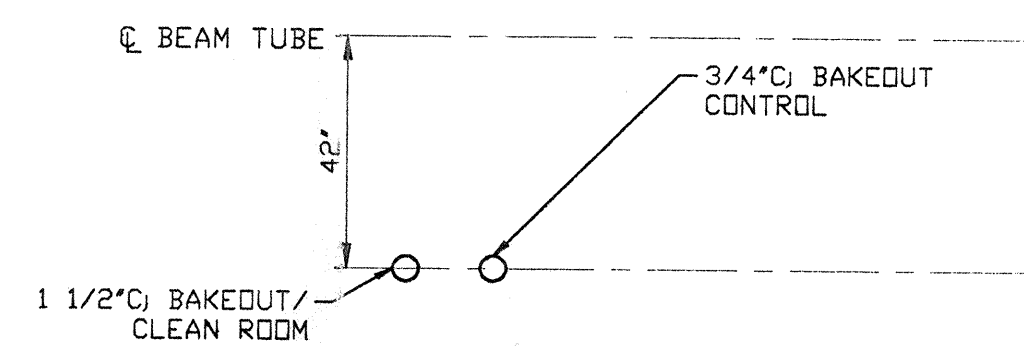
DETAIL 2 REF.
NO SCALE V049-3-624 SHT. 1



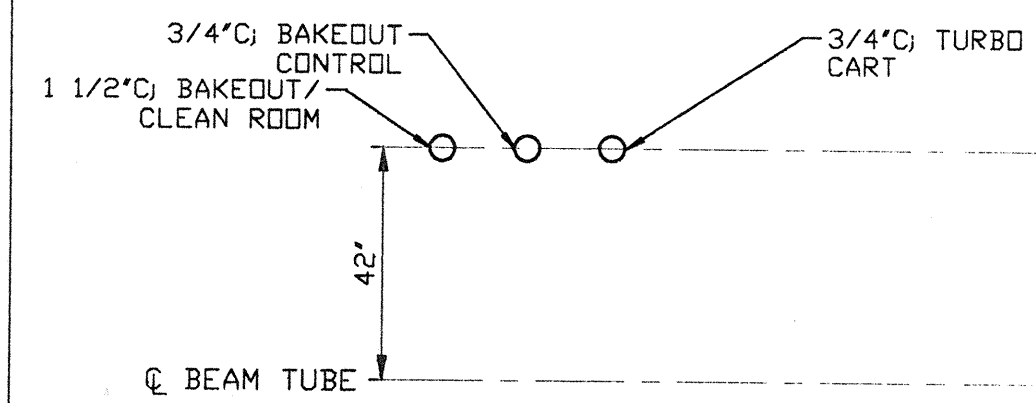
DETAIL 3 REF.
NO SCALE V049-3-624 SHT. 1



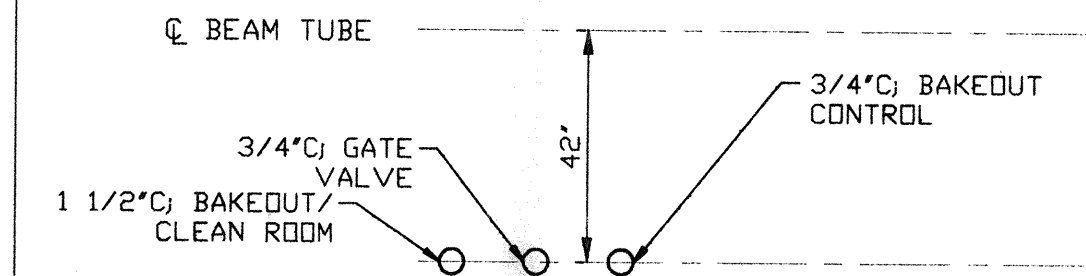
DETAIL 4 REF.
NO SCALE V049-3-624 SHT. 1



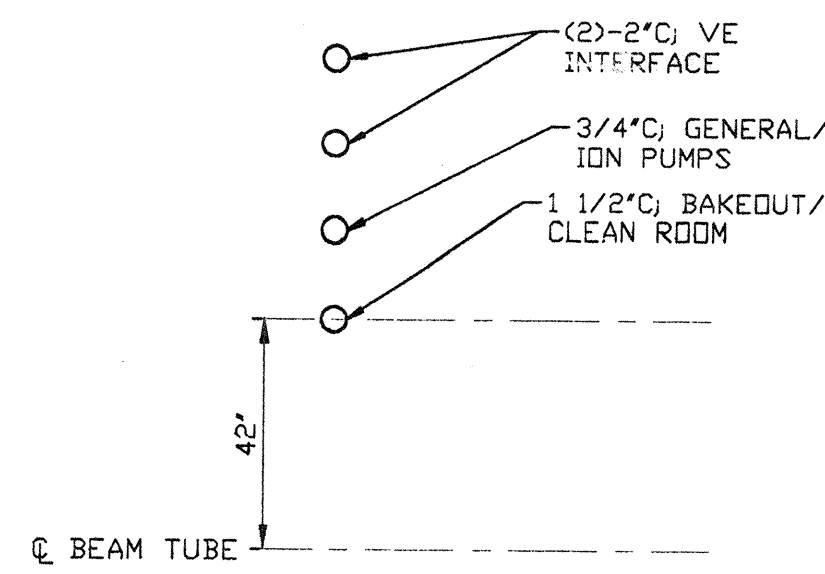
DETAIL 7 REF.
NO SCALE V049-3-624 SHT. 1



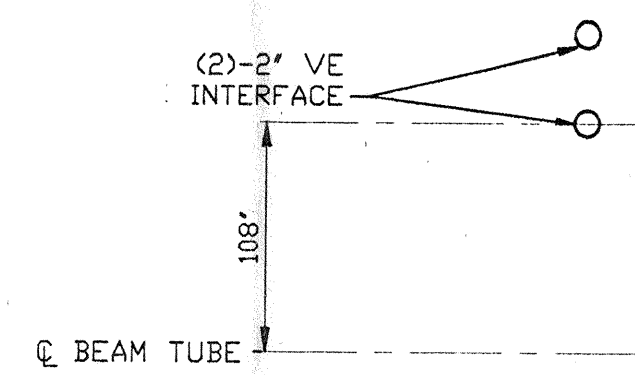
DETAIL 9 REF.
NO SCALE V049-3-624 SHT. 1



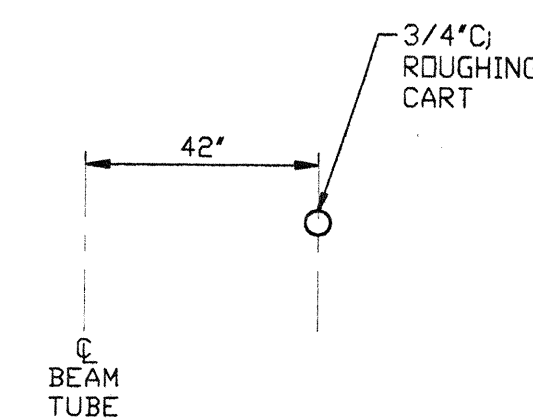
DETAIL 10 REF.
NO SCALE V049-3-624 SHT. 1



DETAIL 11 REF.
NO SCALE V049-3-624 SHT. 1

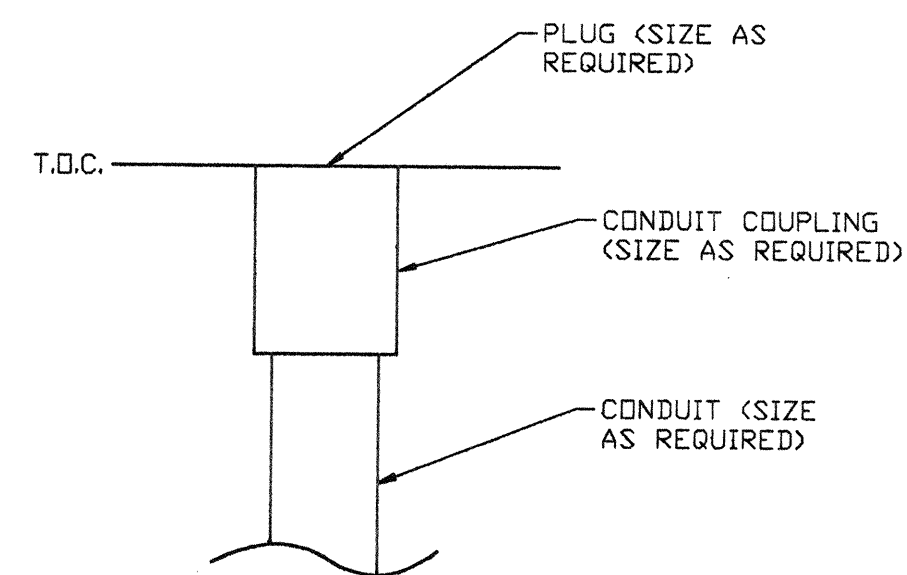


DETAIL 12 REF.
NO SCALE V049-3-624 SHT. 1



DETAIL 14 REF.
NO SCALE V049-3-624 SHT. 1

NOT FOR CONSTRUCTION



DETAIL 16 REF.
NO SCALE V049-3-624 SHT. 1

SEE SHEET 1 FOR REVISIONS

PROCESS SYSTEMS INTERNATIONAL INC. 20 WALKUP DR. WESTBOROUGH, MASSACHUSETTS 01581 USA			
ELECTRICAL CONDUIT STUB-UP PLAN LIGO VACUUM EQUIPMENT LOUISIANA SITE CORNER STATION			
CAD FILE V0493624/3624S2	SIZE D	DWG. NO. V049-3-624	REV. 0
SCALE NONE	SHEET 2 OF 2		

1 L140-DS70076-00-V