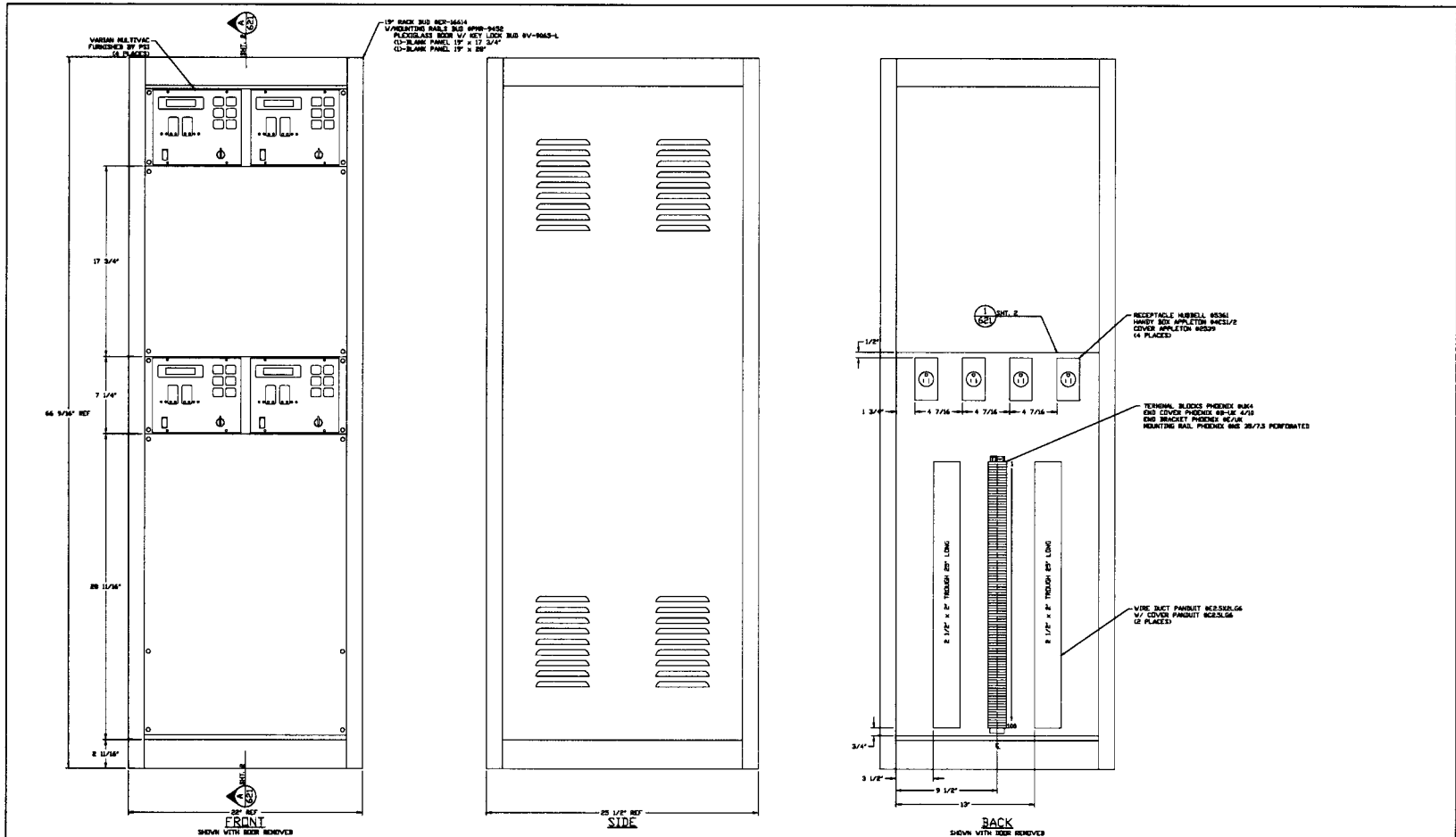


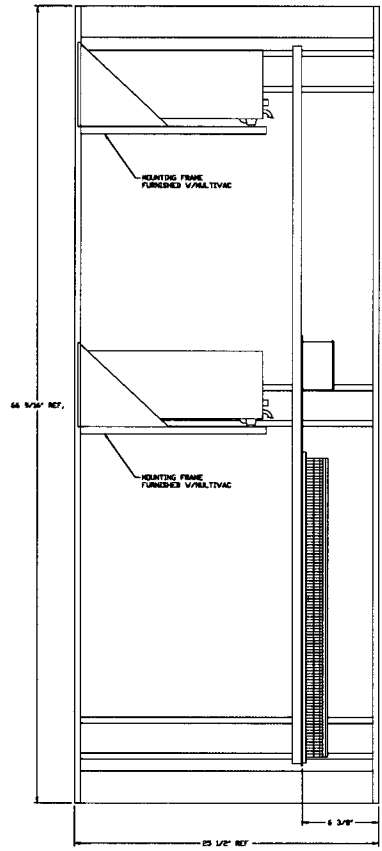
REPRODUCTION PROHIBITED - NOT FOR COMMERCIAL USE



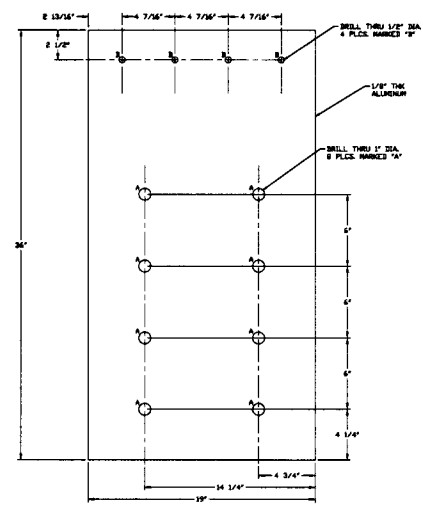
<p>CONSTRUCTION AND DIMENSIONS</p> <p>THIS DRAWING CONTAINS INFORMATION RELATIVE TO PRODUCT DESIGN AND CONSTRUCTION. IT IS THE PROPERTY OF PROCESS SYSTEMS INTERNATIONAL, INC. AND IS NOT TO BE REPRODUCED OR TRANSMITTED IN ANY FORM OR BY ANY MEANS, ELECTRONIC OR MECHANICAL, INCLUDING PHOTOCOPYING, RECORDING, OR BY ANY INFORMATION STORAGE AND RETRIEVAL SYSTEM, WITHOUT THE WRITTEN PERMISSION OF PROCESS SYSTEMS INTERNATIONAL, INC. ANY UNAUTHORIZED REPRODUCTION OR TRANSMISSION OF THIS DRAWING IS STRICTLY PROHIBITED AND WILL BE PROSECUTED TO THE FULL EXTENT OF THE LAW.</p>				<p>MATERIALS AND COMPONENTS</p> <p>INDICATED BY REFERENCE TO DRAWING SHEETS AND TO THIS DRAWING.</p>				<p>PROCESS SYSTEMS INTERNATIONAL, INC. 30 WALTON DR. WESTBOROUGH, MASSACHUSETTS 01581 USA</p>				
<p>DO NOT SCALE THIS DRAWING</p>				<p>DO NOT SCALE THIS DRAWING</p>				<p>PNL-600 ASSEMBLY LIGO VACUUM EQUIPMENT LOUISIANA SITE CORNER STATION</p>				
REV	DESCRIPTION	DATE	BY	CHKD	DATE	BY	CHKD	REV	DESCRIPTION	DATE	BY	CHKD
2	ISSUE FOR AS-BUILT	10/26/99	LS					1	ISSUE FOR CONSTRUCTION	04/26/98	LS	
1	ISSUE FOR DESIGN REVIEW	02/24/97	LS					0	ISSUE FOR LA DESIGN REVIEW	02/24/97	LS	
0	ISSUE FOR CONSTRUCTION	02/24/97	LS					0	ISSUE FOR CONSTRUCTION	02/24/97	LS	

LIGO-D970125-02-V

REVISIONS: 1/1/80 - SEE SHEET FOR COMMERCIAL USE



SECTION A
SCALE 1/4\"/>



DETAIL
SCALE 1/4\"/>

SEE SHEET 1 FOR REVISIONS

PROCESS SYSTEMS INTERNATIONAL, INC. 20 WILSON BL. BOZEMAN, MONTGOMERY STATE, MONT. U.S.A.			
PNL-600 ASSEMBLY LIGO VACUUM EQUIPMENT LOUISIANA SITE CORNER STATION			
USE FILE NUMBER/ISSUE	REV D	DATE V049-3-621	REV E
TITLE AS NOTED	SHEET 2 OF 2		