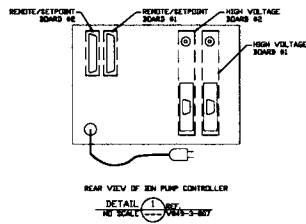
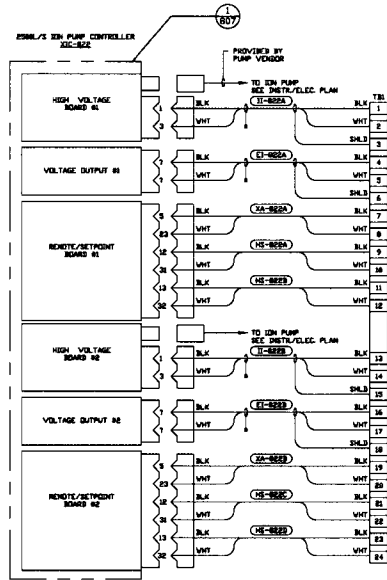


NOTES
 1) ALL WIRING IS RED AWG.



| | | | | | | | | | | | | | |
|---|--|---|--|--|--|--|--|---|--|---|--|---|--|
| DISCREETARY AND CONFIDENTIAL THIS DOCUMENT CONTAINS PROPRIETARY INFORMATION THE DISCLOSURE OF WHICH TO PERSONS UNAUTHORIZED TO RECEIVE IT COULD BE PREJUDICIAL TO THE NATIONAL DEFENSE. IT IS THE POLICY OF THIS COMPANY AND ITS EMPLOYEES TO MAINTAIN THE CONFIDENTIALITY OF THIS INFORMATION. IT IS THE POLICY OF THIS COMPANY AND ITS EMPLOYEES TO MAINTAIN THE CONFIDENTIALITY OF THIS INFORMATION. IT IS THE POLICY OF THIS COMPANY AND ITS EMPLOYEES TO MAINTAIN THE CONFIDENTIALITY OF THIS INFORMATION. | | ISSUE CHANGE RECORD REVISIONS ARE IN BONES REVISIONS 2 ISSUE FOR AS-BUILT 1 ISSUE FOR CONSTRUCTION 0 ISSUE FOR LA DESIGN REVIEW | | LB 03.01.99 0644 FAB R/JV 04.06.98 0654 REB 06.24.97 0438 CHG3 DR/VN DATE 03/28 | | PROCESS SYSTEMS INTERNATIONAL, INC. 2700 W. 10TH AVENUE, SUITE 100 DENVER, CO 80202-2700 TEL: 303.733.1100 FAX: 303.733.1101 WWW: WWW.PSI-CO.COM | | | | | | | |
| REFERENCE DRAWINGS V049-3-800 INSTR. ELEC. PLAN LOUISIANA RIGHT END STATION V049-3-800 CABLE TRAY PLAN LOUISIANA RIGHT END STATION | | DESCRIPTION PNL-800 WIRING DIAGRAM LIGO VACUUM EQUIPMENT LOUISIANA SITE RIGHT END STATION | | ON FILE V049-3-800 | | REV 2 V049-3-807 | | | | | | | |
| 7 | | 6 | | 5 | | 4 | | 3 | | 2 | | 1 | |

PRODUCTION VERSION - NOT FOR COMMERCIAL USE