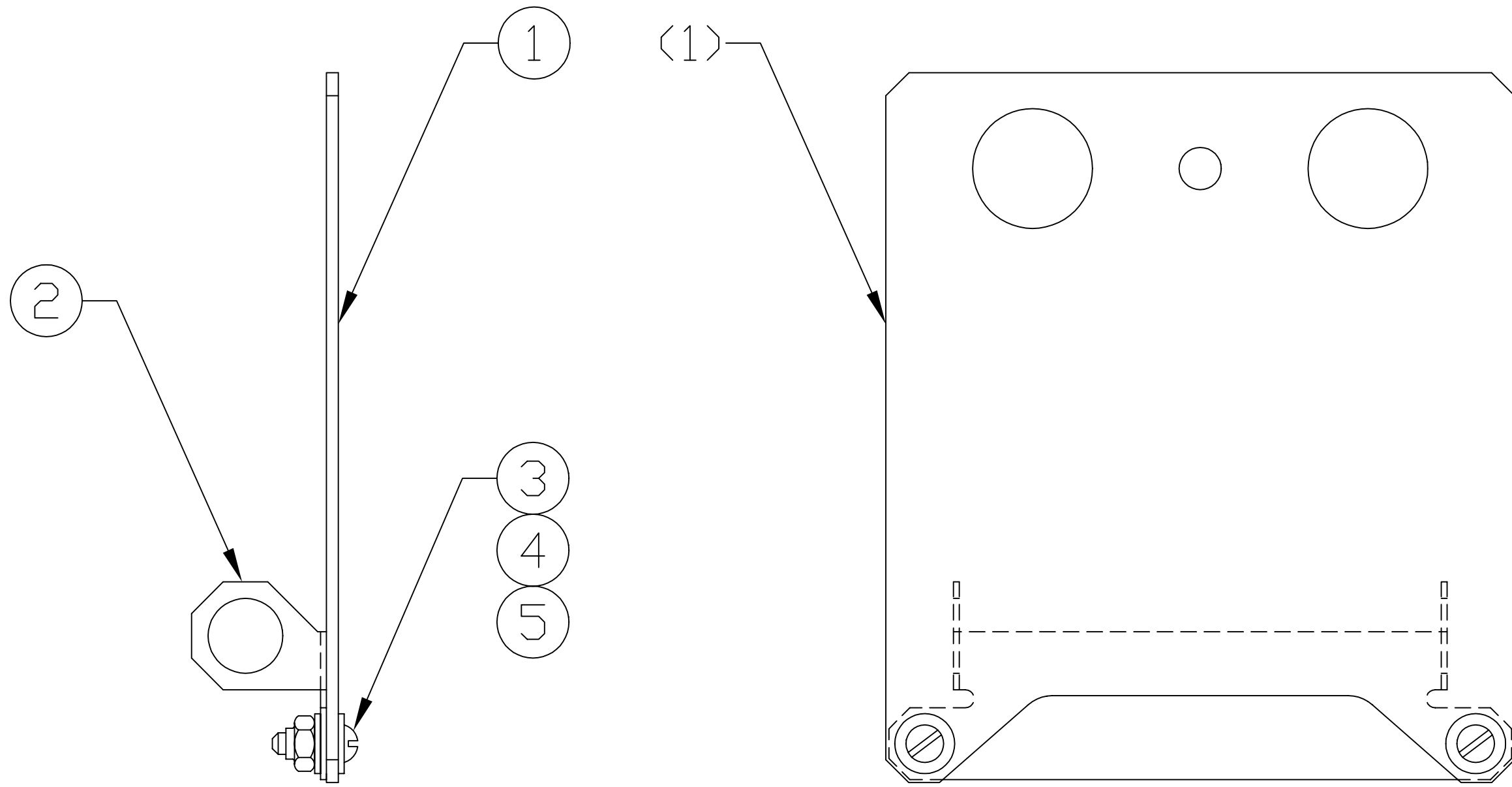


NOTES: (UNLESS OTHERWISE SPECIFIED)
 ⚠ FOR VENDOR INFORMATION, SEE TOP ASSEMBLY MATERIALS LIST D970006.



REF	QTY	PART or DRWG No.	NOMENCLATURE or DESCRIPTION	MATERIAL
5	2	McM-Carr #91839A005	#4-40 HEX NUT, "FLEXLOC"	stainless steel
4	4	McM-Carr #92141A005	#4 NOM, .13 ID, .31 OD, .032 THK FL WASH	stainless steel
3	2	McM-Carr #91810A108	#4-40 X .38 LG SLOTTED RD HD SCR	stainless steel
2	1	D970167	BRACKET	-
1	1	D970166	PROTECTIVE SHEET	-

PARTS and MATERIAL LIST ⚠

UNLESS OTHERWISE SPECIFIED DIMENSIONS ARE IN INCHES		TOLERANCES: FRACTIONAL ± ANGULAR ± ANGULAR MACH ± BEND ± TWO PLACE DECIMAL ±		THREE PLACE DECIMAL ± FINISHED SURFACE RMS BREAK CORNERS IN OUT REMOVE ALL BURRS		LIGO CALIFORNIA INSTITUTE OF TECHNOLOGY MASSACHUSETTS INSTITUTE OF TECHNOLOGY												
MATERIAL:		HEAT TREAT:		FINISH:		LARGE CORE OPTIC COMPONENT CARRIER PROTECTIVE SHEET ASSEMBLY												
DWG. NO.	DESCRIPTION	USED ON:	NEXT ASS'Y:	REV	DESCRIPTION	DCC	SYS	DET	CDS	VE	CC	BT	CHECK	DRWN	DATE	CAD FILE	SIZE	DWG. NO.
	REFERENCE DRAWINGS	5	D961460	A	DCN E970007										4-29-97	D970168-A.dwg	B	D970168-A-D
SCALE NTS															SHEET 1 OF 1			