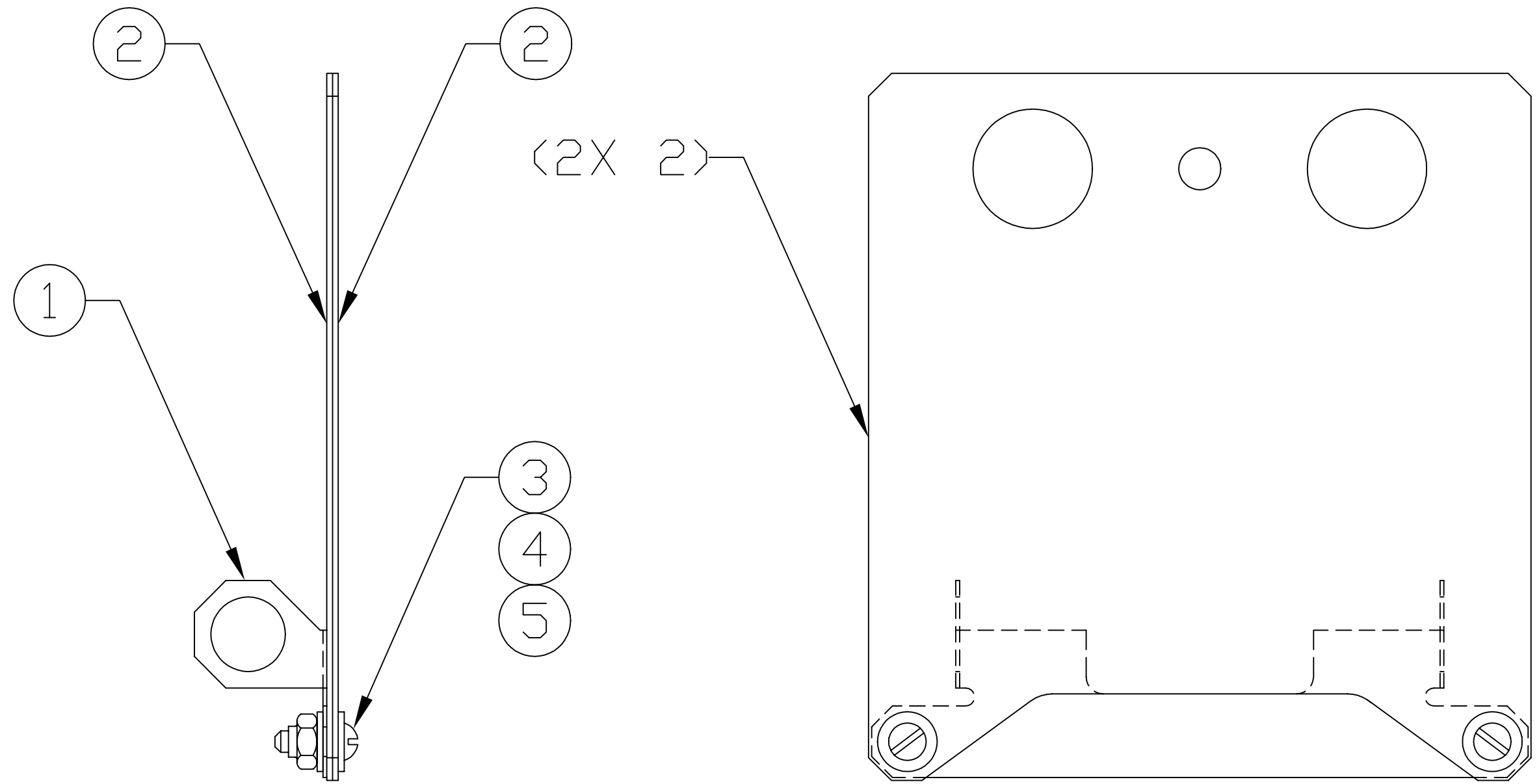


NOTES: (UNLESS OTHERWISE SPECIFIED)  
 ⚠ FOR VENDOR INFORMATION, SEE TOP ASSEMBLY MATERIALS LIST D970006.



REF	QTY	PART or DRWG No.	NOMENCLATURE or DESCRIPTION	MATERIAL
5	2	McM-Carr #91839A005	#4-40 HEX NUT, "FLEXLOC"	stainless steel
4	4	McM-Carr #92141A005	#4 NOM, .13 ID, .31 OD, .032 THK FL WASH	stainless steel
3	2	McM-Carr #91810A108	#4-40 X .38 LG SLOTTED RD HD SCR	stainless steel
2	2	D970167	PROTECTIVE SHEET	-
1	1	D970166	BRACKET	-

PARTS and MATERIAL LIST ⚠

		UNLESS OTHERWISE SPECIFIED DIMENSIONS ARE IN INCHES				LIGO CALIFORNIA INSTITUTE OF TECHNOLOGY MASSACHUSETTS INSTITUTE OF TECHNOLOGY	
		TOLERANCES: FRACTIONAL ± ANGULAR ± ANGULARMACH ± BEND ± TWO PLACE DECIMAL ±		THREE PLACE DECIMAL ± FINISHED SURFACE RMS BREAK CORNERS IN OUT REMOVE ALL BURRS			
		MATERIAL:	HEAT TREAT:	FINISH:			
DWG. NO.	DESCRIPTION	USED ON:	NEXT ASS'Y: D961460	REV	DESCRIPTION	DRWN	DATE
6	REFERENCE DRAWINGS	5	4	C	DCN E980214-00	CDNLEY	9-16-97
				B	DCN E970059-00	CDNLEY	5-20-97
				A	DCN E970007-00	CDNLEY	4-29-97
						CDYNE	5-27-97
						CDYNE	4-29-97
						CAD FILE	SIZE DWG. NO.
						D970168-C.dwg	B D970168-C-D
						SCALE	SHEET
						NTS	1 OF 1