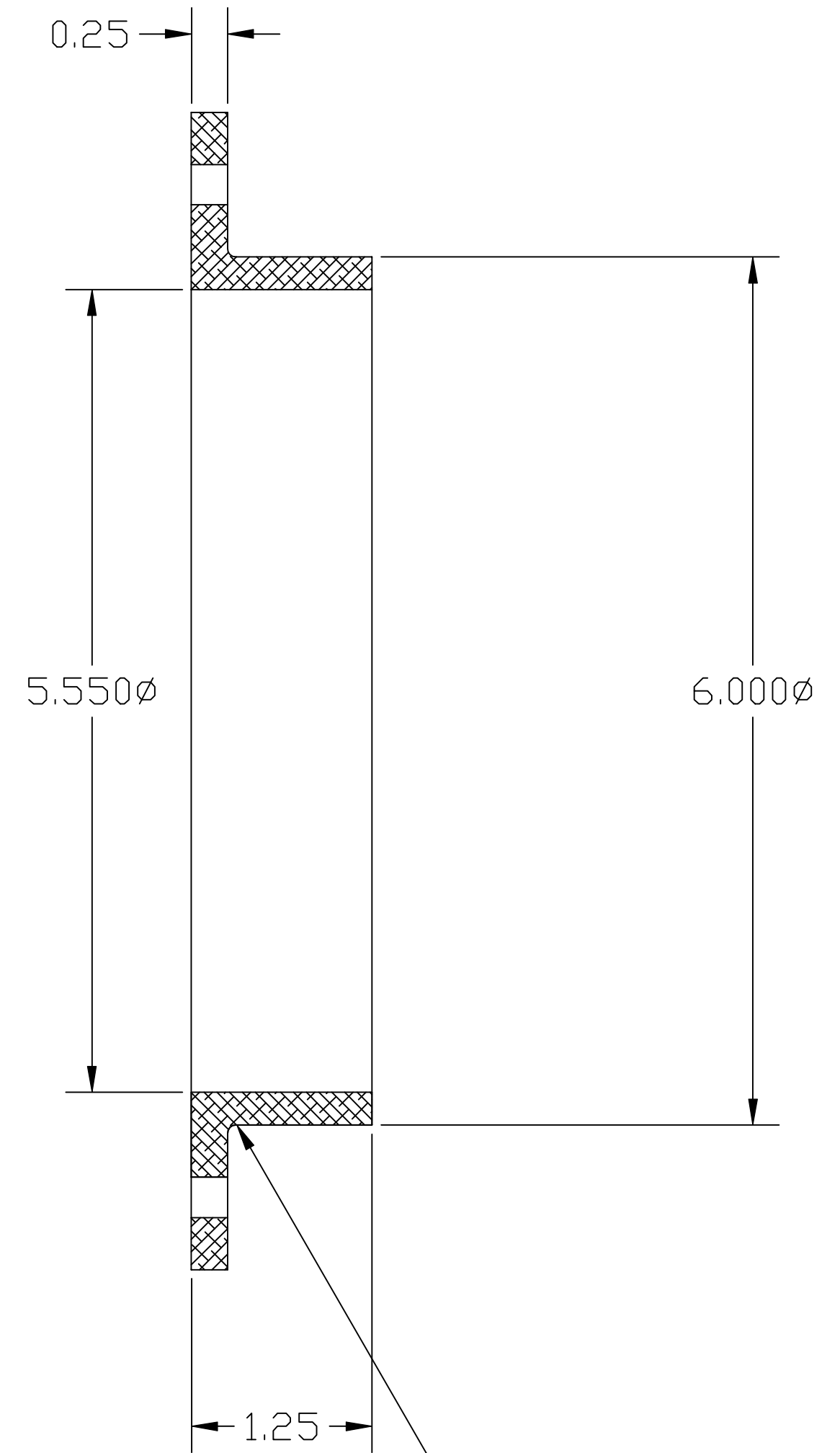
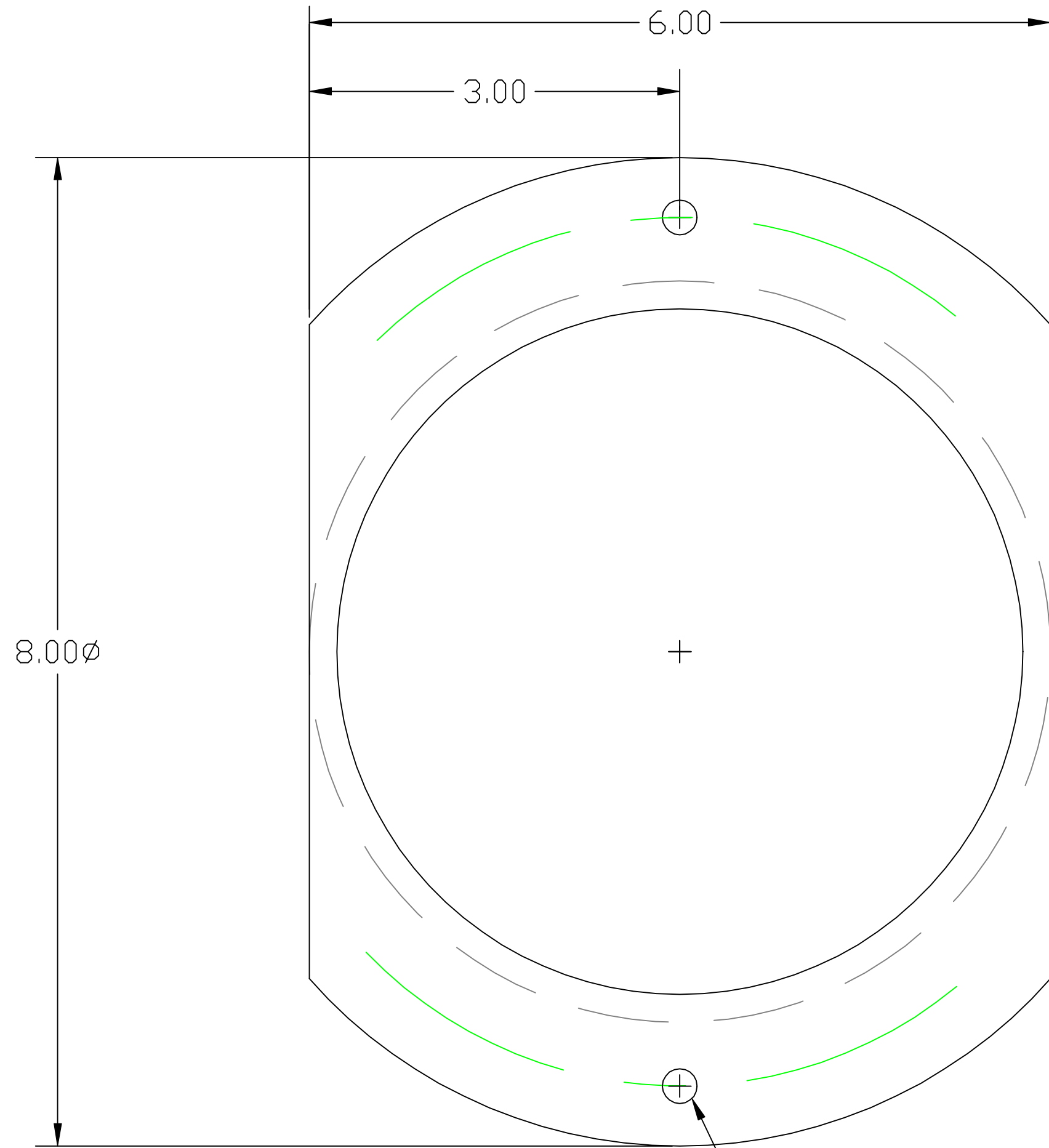


NOTES:  
1. CLEAR ANODIZE PER MIL-A-8625



.281 $\phi$  THRU (2) HOLES EQ SP ON A  
7.000 $\phi$  B.C.

REF	QTY	PART or DRWG No.	CDS										MATERIAL	
PARTS and MATERIAL LIST														
			UNLESS OTHERWISE SPECIFIED										CALIFORNIA INSTITUTE OF TECHNOLOGY MASSACHUSETTS INSTITUTE OF TECHNOLOGY	
			DIMENSIONS ARE IN FEET [cm]										SEAL MOUNT - LEVER OPTICAL LEVER ASSY SUPPORT STRUCTURE	
			TOLERANCES: FRACTIONAL $\pm 1/16(.16)$ ANGULAR $\pm 1^\circ$ TWO PLACE DECIMAL $\pm .01(.025)$ THREE PLACE DECIMAL $\pm .005(.013)$										MASON 9/98	
			FINISHED SURFACE RMS 63 BREAK CORNERS .02 REMOVE ALL BURRS										MASON 5/98	
			MATERIAL: 6061-T6 ALUM.										MASON 6/97	
			HEAT TREAT: -										CAD FILE: D970207-B.dwg	
			FINISH: SEE NOTE 1										SIZE: C	
			USED ON: D970190-00-D										DWG. NO.: D970207-B-D	
			NEXT ASS'Y: -										SCALE: FULL	
			ISSUE DESCRIPTION										SHEET 1 of 1	