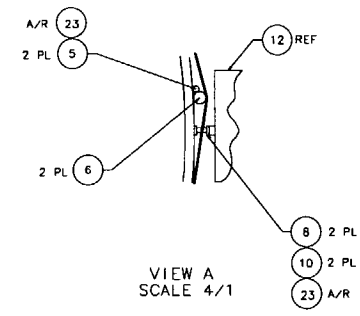
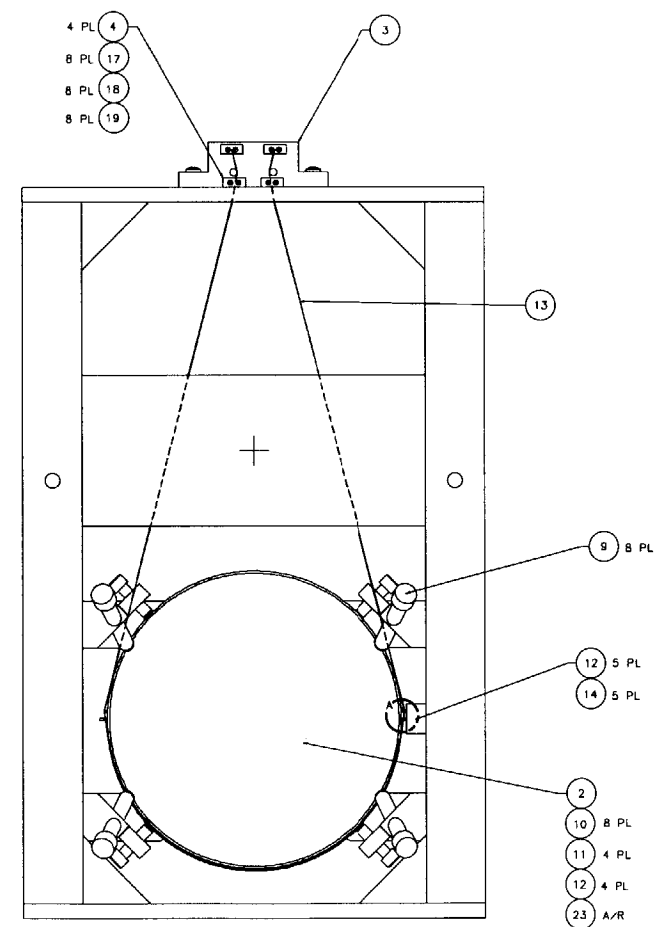
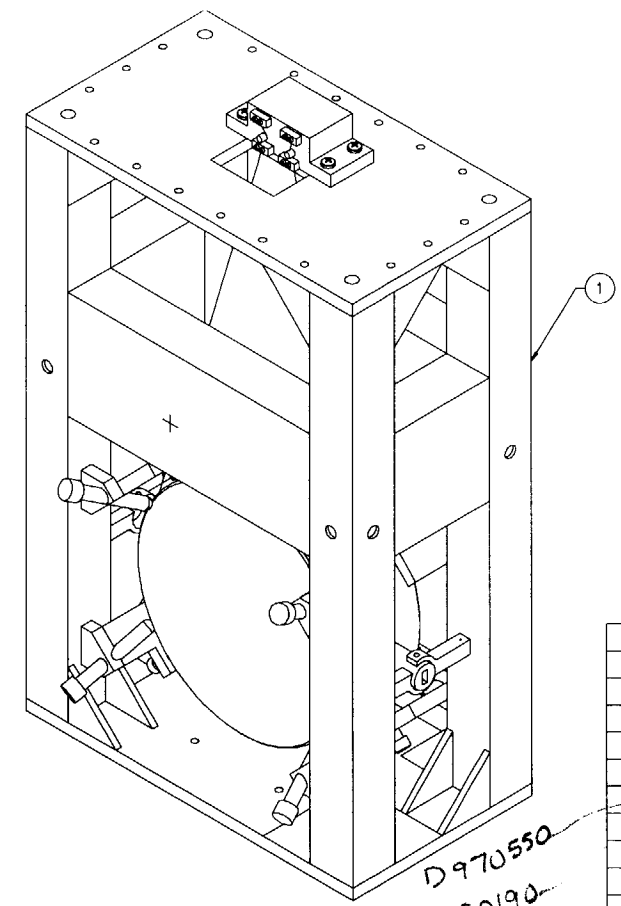
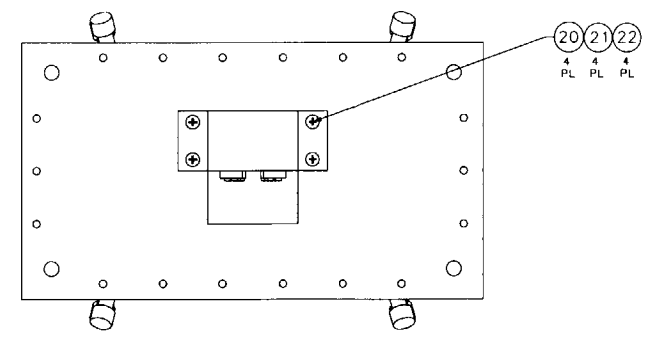


REV	DATE	DRAWN BY	CHECKED	SEC	DOC/DESCRIPTION
A	1/19/96	J. Hezel		L. Turner	E980004/INITIAL RELEASE
B	4/8/98	C. Conley			E980077/UPDATE PARTS LIST

NOTES: (UNLESS OTHERWISE SPECIFIED)
 1. SPECIFICATIONS FOR THE CONSTRUCTION OF THIS ASSEMBLY ARE COVERED IN THE LARGE OPTIC SUSPENSION BALANCING SPECIFICATION, LIGO E970154.
 ② MATERIAL: CONDUCTIVE TEFLON, MANUF. BY FURON DIXON, 386 METACOM AVE., BRISTOL, RI, 02809, (401)253-2000, AND DESIGNATED BY THE NAME FURON DIXON COMPOUND 1042.
 ③ HEIGHT ADAPTER IS NOT SHOWN FOR CLARITY. IT IS BOLTED TO THE TOP OF THE LOS STRUCTURE ASSEMBLY USING THE HARDWARE ITEM NOS. 25-28. INSTRUCTIONS INCLUDED IN LIGO E970154.



QTY	ITEM NO.	DESCRIPTION	MATERIAL	QTY
	D970180	WINCH FIXTURE		41
	D960761	FIXTURE, LIFTING		40
	D970074	FIXTURE, MAGNET TO DUMPELL STANDOFF		39
	D960763	FIXTURE, TEST MASS		38
	D960752	FIXTURE, OPTICAL LEVELER		37
	D960753	FIXTURE, WIRE AND OPTICS		36
	D960147	FIXTURE, GUIDE ROD		35
	D960050	FIXTURE, MAGNET/STANDOFF ASSEMBLY		34
	D970169	MAGNET STRENGTH FIXTURE		33
	D970616	COIL STRENGTH FIXTURE		32
				31
	D970615	PAM SCREW		30
				29
24	18	1/4-20 x 1.5 LG SHCS	STAINLESS, Ag PLTD	28
24	18	1/4-20 LOCK WASHER	STAINLESS, AG PLTD	27
24	18	1/4-20 FLAT WASHER	STAINLESS, AG PLTD	26
24	12	DC COMP N-2520-A		25
1	D960145	HEIGHT ADAPTER, BS 2K		24
A/R		EPOXY, VAC-SEAL		23
4	COMMERCIAL EQUIV NAS620416L	WASHER, FLAT, #1/4	STAINLESS	22
4	COMMERCIAL EQUIV MS3533B-139	WASHER, SPLIT LOCK, #1/4	STAINLESS	21
4	U-C COMPONENTS P/N C-2016-NA	SCREW, SHCS, 1/4-20 x 1.00	STAINLESS, Ag PLTD	20
8	COMMERCIAL EQUIV NAS6204L	WASHER, FLAT, #1/4	STAINLESS	19
8	COMMERCIAL EQUIV MS3533B-135	WASHER, SPLIT LOCK, #1/4	STAINLESS	18
8	U-C COMPONENTS P/N C-43E-NA	SCREW, SHCS, 4-40 x .75, 50	STAINLESS, Ag PLTD	17
	D970563	BEAM SPLITTER		16
8		SCREW, HEX HEAD, 3/8-16 x 1.30		15
6	U-C COMPONENTS P/N T-1003-NA	SET SCREW, SOCKET, 10-32 x .188	STAINLESS, Ag PLTD	14
A/R		WIRE, #01207-0003	MUSIC WIRE	13
5	D960138	SENSOR/ACTUATOR HEAD ASSEMBLY		12
4	D970075	DUMPELL STANDOFF		11
10	D960501	MAGNET BEAM SPLITTER		10
8	D960499	LOS CHAMFER STOP		9
2	D960149	LOS SIDE STANDOFF		8
				7
2	D960755	LOS LARGE WIRE STANDOFF		6
1	D960146	LOS GUIDE ROD		5
4	D960134	LOS CLAMP, SUSPENSION BLOCK		4
1	D960144	LOS SUSPENSION BLOCK		3
1	COATING SPEC E980008	OPTIC, Ø25cm x .10cm THICK	(END TEST MASS)	2
1	D960133	LOS STRUCTURE ASSEMBLY		1

D970555

Ø.008 ± .0003

D970562

D970540

E980069
D970506

APPROVALS		DATE	TITLE
DRW: J. Hezel	CHECKED:	5/96	LARGE OPTIC SUSPENSION ASSEMBLY FOR END TEST MASS
DO NOT SCALE DRAWING	MATERIAL: N/A	SIZE: E	REV: 00
FILE LOCATION: home/elec/elec/700000000000	FINISH: N/A	SCALE: 1:21	SHEET: 1 OF 1

REDLINE

D970539
BEAMSPLITTER, 2K(BS, 2K)