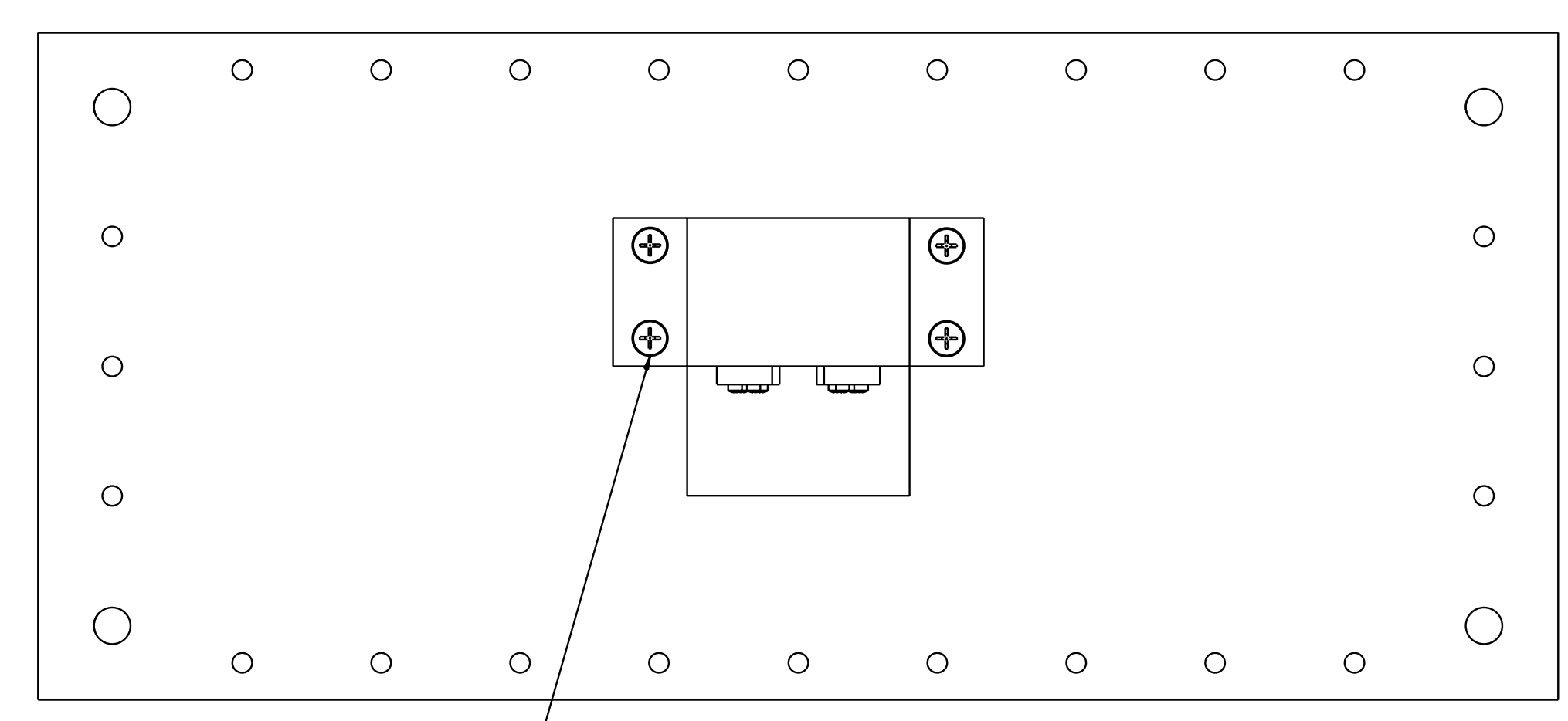
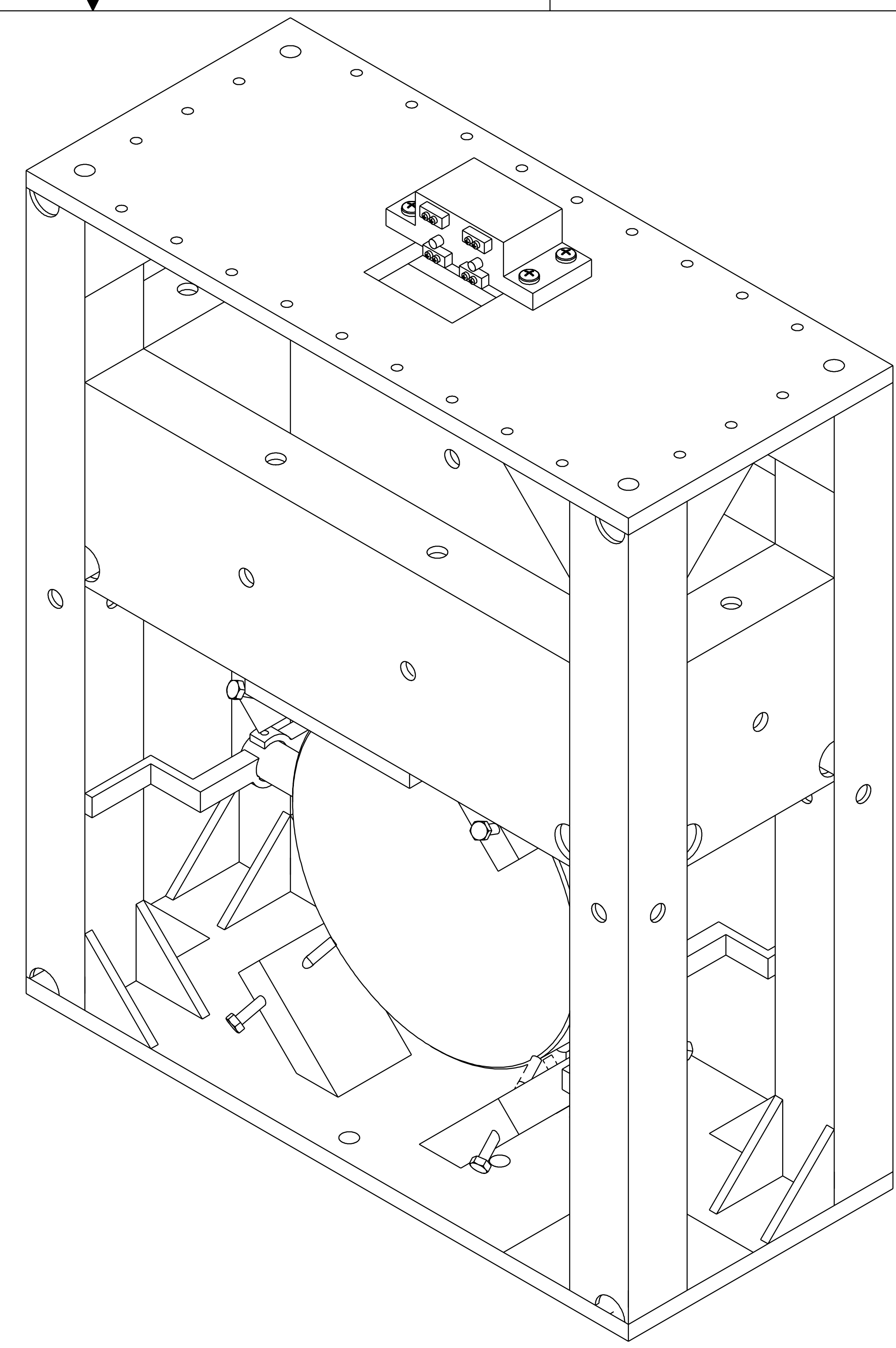
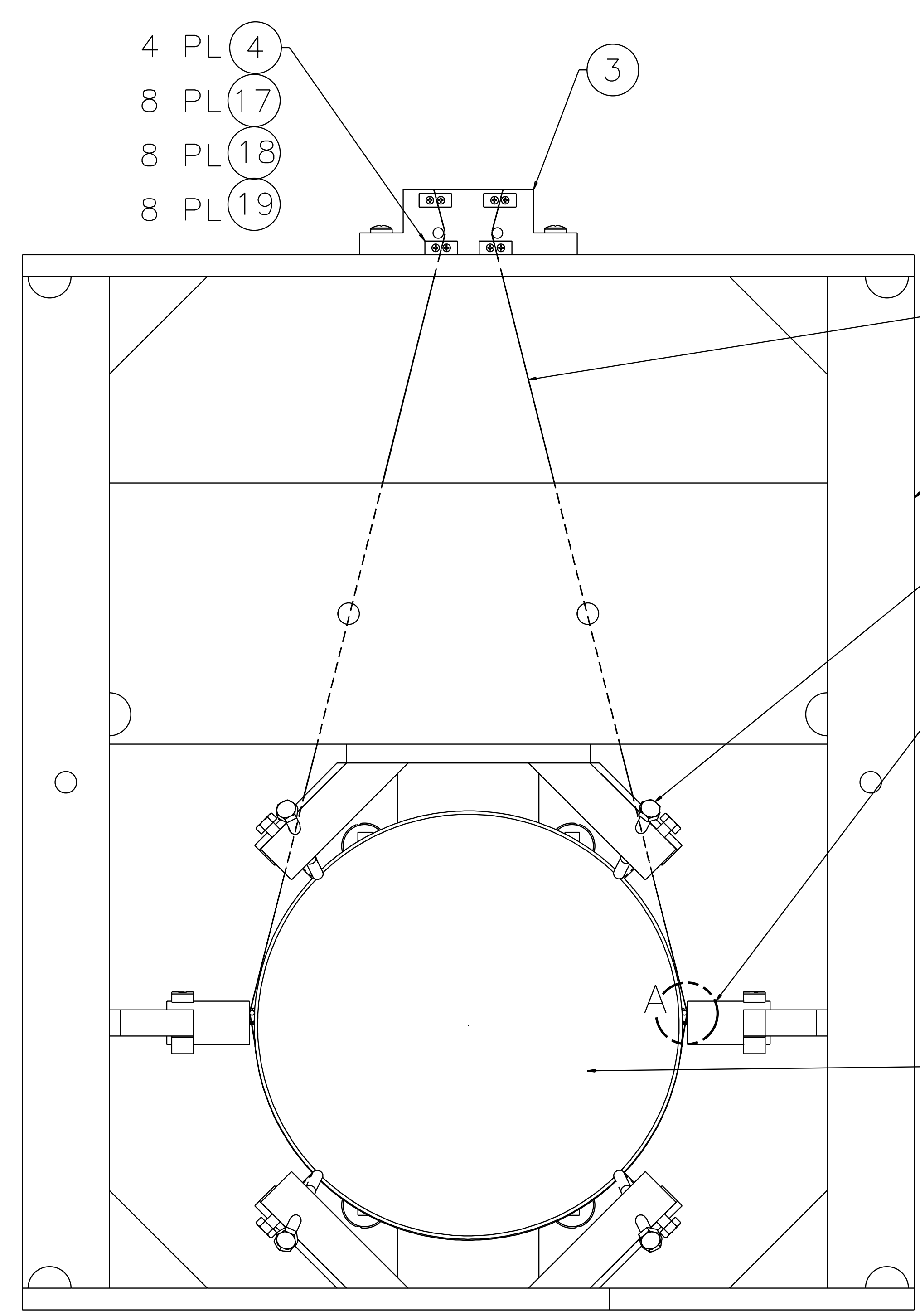


NOTES: (UNLESS OTHERWISE SPECIFIED)
 1. SPECIFICATIONS FOR THE CONSTRUCTION OF THIS ASSEMBLY ARE COVERED IN THE LARGE OPTIC SUSPENSION BALANCING SPECIFICATION, LIGO E970154.
 HEIGHT ADAPTER IS NOT SHOWN FOR CLARITY. IT IS BOLTED TO THE TOP OF THE LOS STRUCTURE ASSEMBLY USING THE HARDWARE ITEM NOS. 25-28. INSTRUCTIONS INCLUDED IN LIGO E970154.

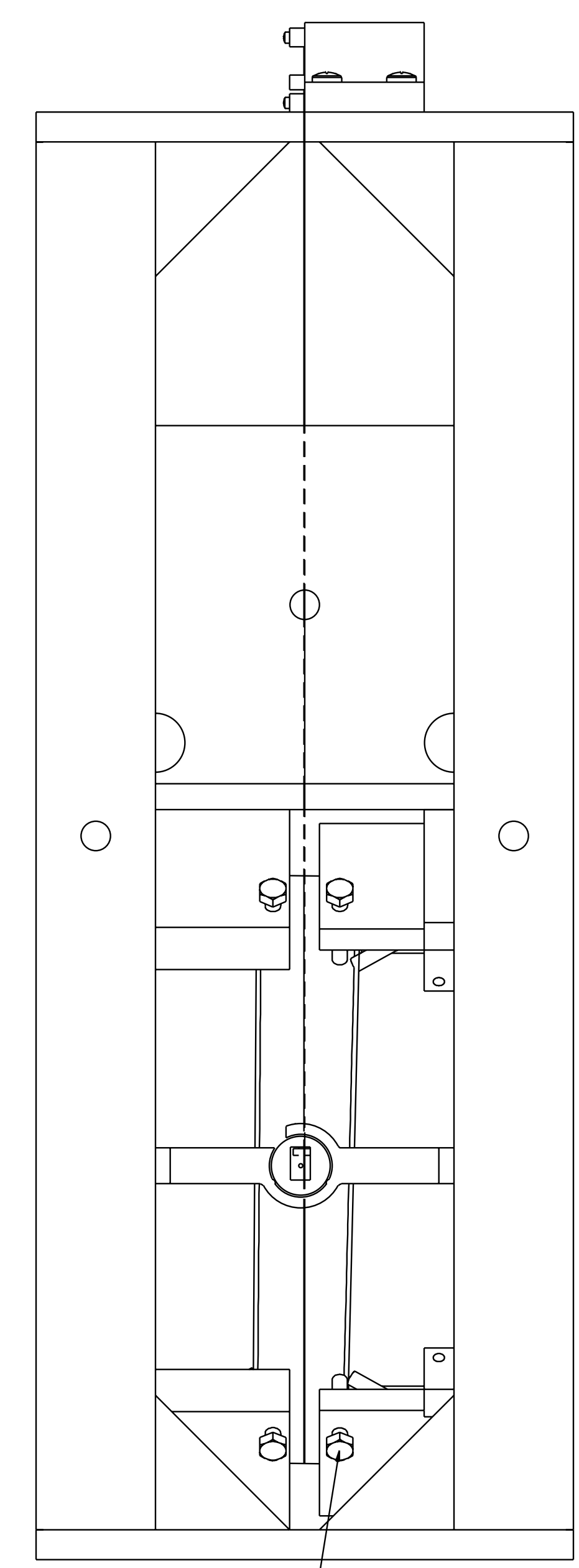
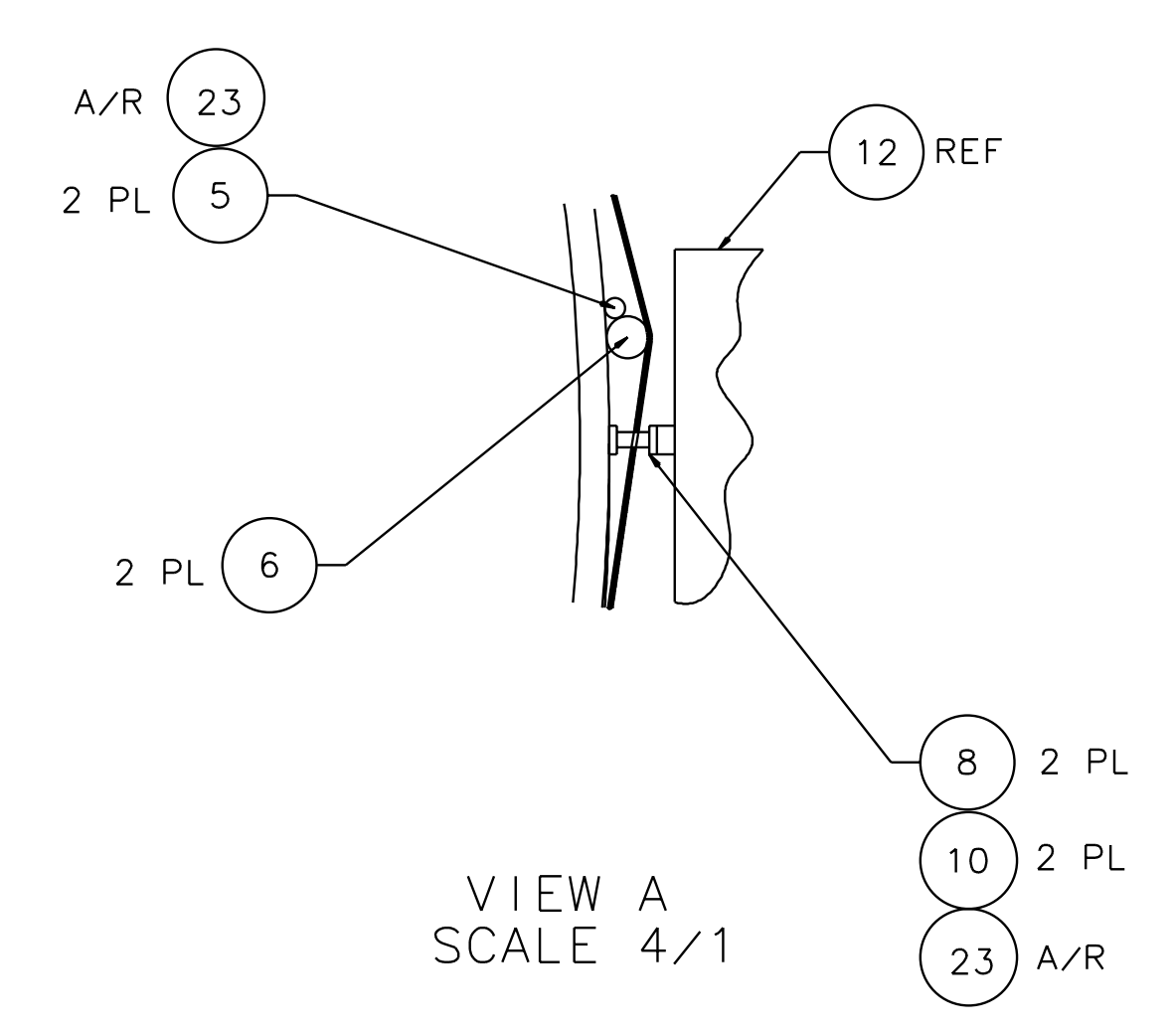
REV	DATE	DRAWN BY	CHECKED	DCC	DCN/DESCRIPTION
A	4/27/01	J. Romie			E010077/INITIAL RELEASE



22 21 20
 4 PL 4 PL 4 PL



4 PL 4
 8 PL 17
 8 PL 18
 8 PL 19



8 PL 15

QTY	PART OR IDENTIFYING NO.	NOMENCLATURE OR DESCRIPTION	MATERIAL SPECIFICATION	ITEM NO.
				41
				40
				39
				38
				37
				36
				35
	D970180	WINCH FIXTURE		35
	D970550	FIXTURE, GUIDE ROD		34
	D990190	FIXTURE, MAG./STAND.GLUING,BS		33
	D970169	MAGNET STRENGTH FIXTURE		32
	D970616	COIL STRENGTH FIXTURE		31
	D970615	PAM SCREW		30
				29
				28
24		1/4-20 x 1.5 LG SHCS	STAINLESS	28
24		1/4-20 LOCK WASHER	STAINLESS	27
24		1/4-20 FLAT WASHER	STAINLESS	26
24	U-C COMPONENTS P/N N-2520-A	1/4-20 HEX NUT	STAINLESS,Ag PLTD	25
1	D970555	HEIGHT ADAPTER, BS,2K	(2)	24
A/R		EPOXY, VAC-SEAL		23
4	COMMERCIAL EQUIV NAS620416L	WASHER, FLAT, #1/4	STAINLESS	22
4	COMMERCIAL EQUIV MS35338-139	WASHER, SPLIT LOCK, #1/4	STAINLESS	21
4	U-C COMPONENTS P/N C-2016-NA	SCREW, SHCS, 1/4-20 x 1.00	STAINLESS,Ag PLTD	20
8	COMMERCIAL EQUIV NAS620C4L	WASHER, FLAT, #4	STAINLESS	19
8	COMMERCIAL EQUIV MS35338-135	WASHER, SPLIT LOCK, #4	STAINLESS	18
8	U-C COMPONENTS P/N C-408-NA	SCREW, SHCS, 4-40 x .50	STAINLESS,Ag PLTD	17
				16
8	D970563	BEAMSPLITTER SAFETY STOP		15
6	U-C COMPONENTS P/N T-1003-NA	SET SCREW, SOCKET,10-32 x .188	STAINLESS,Ag PLTD	14
A/R		WIRE, .008* +/- .0003*	MUSIC WIRE	13
5	D960138	SENSOR/ACTUATOR HEAD ASSEMBLY		12
4	D970075	DUMBELL STANDOFF		11
10	D960501	MAGNET		10
8	D970562	BEAMSPLITTER CHAMFER STOP		9
2	D960149	LOS SIDE STANDOFF		8
				7
2	D960755	LOS LARGE WIRE STANDOFF		6
1	D960146	LOS GUIDE ROD		5
4	D960134	LOS CLAMP, SUSPENSION BLOCK		4
1	D970540	BEAMSPLITTER SUSPENSION BLOCK		3
1	COATING SPEC E980069	OPTIC, .025cm x 4cm THICK	(BEAMSPLITTER, 2K)	2
1	D970506	LOS2 STRUCTURE ASSEMBLY		1

UNLESS OTHERWISE SPECIFIED DIMENSIONS ARE IN INCHES TOLERANCES ARE: FRACTIONS DECIMALS ANGLES

APPROVALS DATE LIGO CALIFORNIA INSTITUTE OF TECHNOLOGY MASSACHUSETTS INSTITUTE OF TECHNOLOGY

DRAWN J. Hozeil 5/96 TITLE LARGE OPTIC SUSPENSION ASSEMBLY (LOS2b) FOR BEAMSPLITTER, 2K (BS, 2K)

CHECKED

DO NOT SCALE DRAWING

NEXT ASSEMBLY FINAL MATERIAL N/A

FILE LOCATION home/dcc/docs/0970539.pdf FINISH N/A

SIZE E D970539 REV A

SCALE 1/2 SHEET 1 OF 1