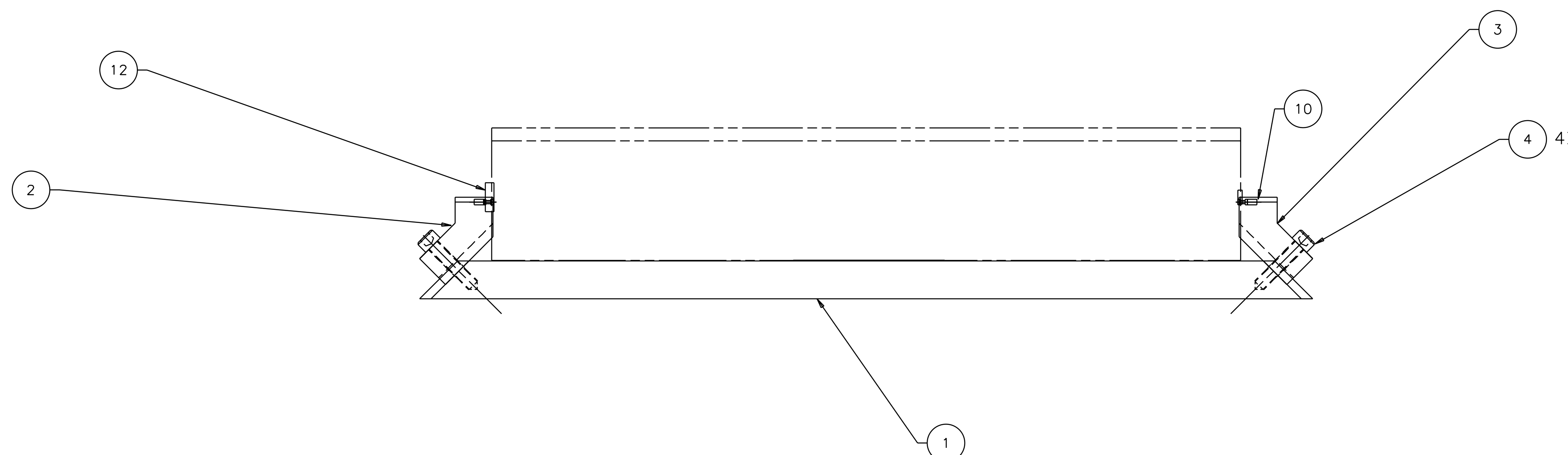
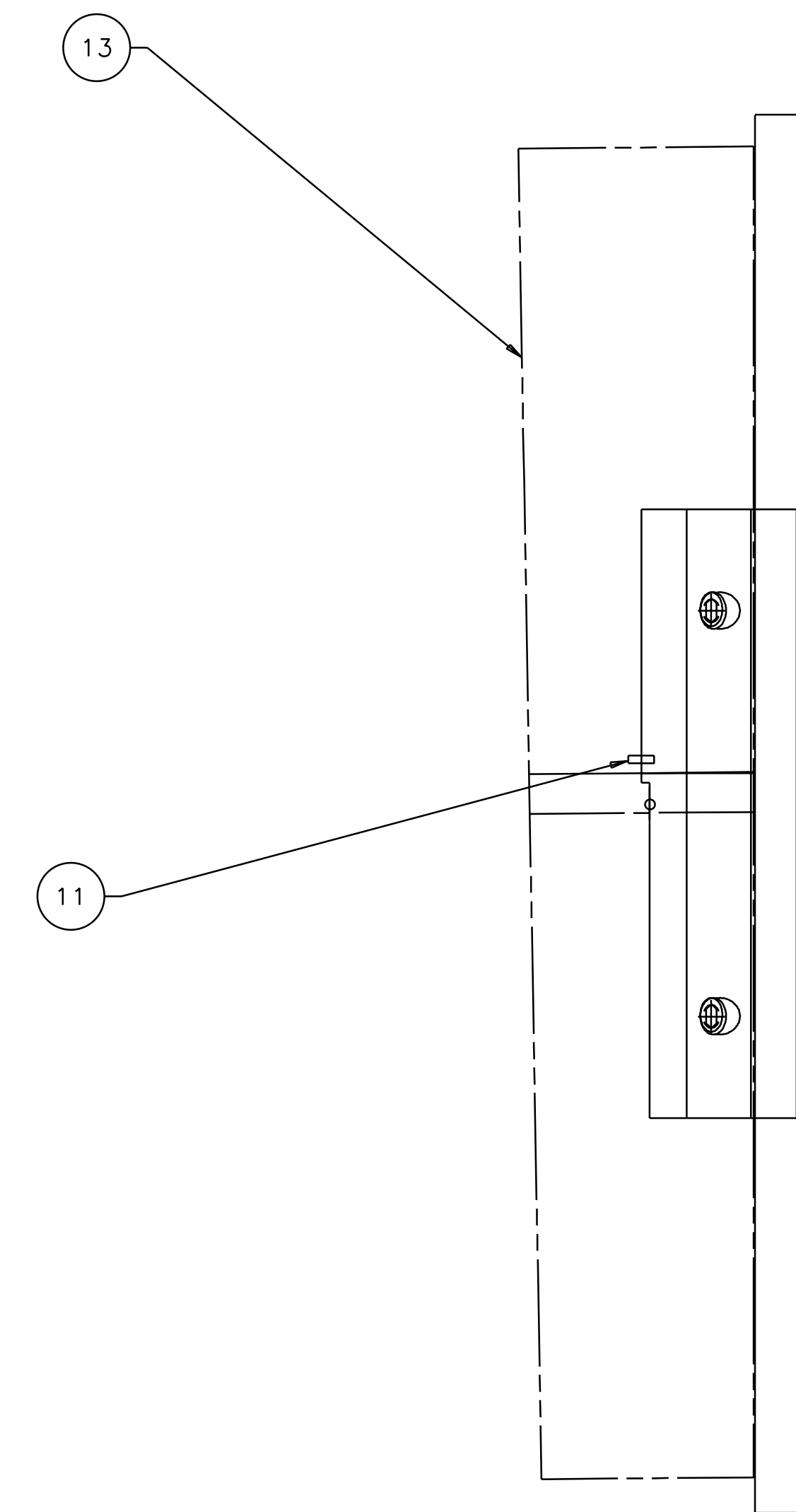
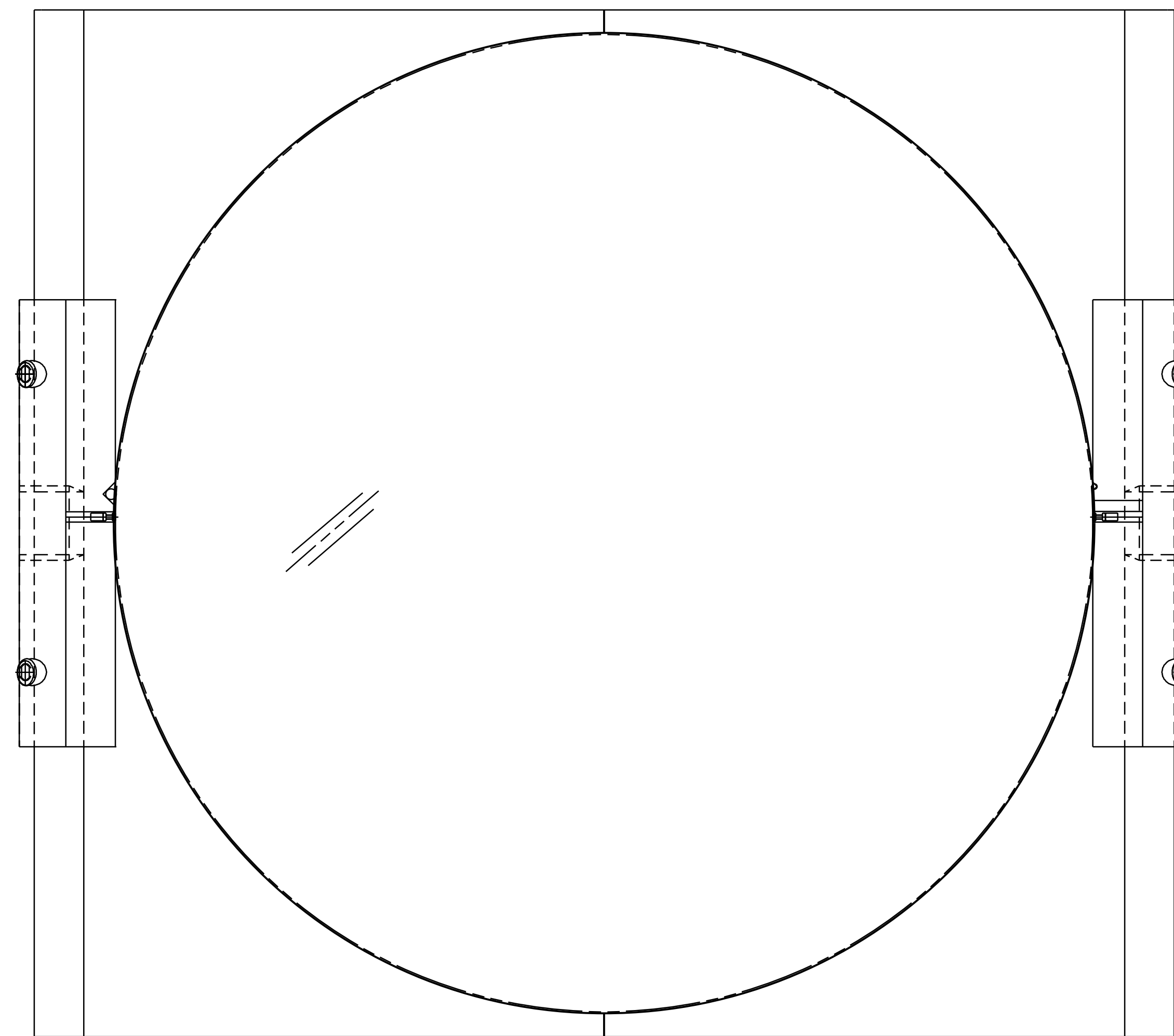


1 2 3 4 5 6 7 8

REV	DATE	DRAWN BY	CHECKED	DC	DCN/DESCRIPTION
A	8-14-98	J. Romie			E980220/INITIAL RELEASE

- NOTES: (UNLESS OTHERWISE SPECIFIED)
1. THIS FIXTURE IS TO BE USED WITH AN OPTIC THAT IS $\phi 9.84"$ X $1.575"$ THICK ($\phi 25\text{cm}$ x 4cm THICK) WITH A 1 DEGREE, THICK-SIDE-UP ORIENTED WEDGE.
 2. CLOSE SLIP FIT.
 3. THE RIGHT BLOCK, TOP IS USED TO MOUNT THE GUIDE ROD AND THE LEFT BLOCK, TOP IS USED TO MOUNT THE WIRE STANDOFF.
 4. USE OF THIS FIXTURE IS COVERED IN LIGO-E970154.
 5. SPECIFICATIONS COVERING THE FABRICATION OF THIS ASSEMBLY ARE DETAILED IN LIGO-E970155, THE LARGE OPTIC SUSPENSION (LOS) FIXTURES AND COMPONENTS FABRICATION SPECIFICATION.

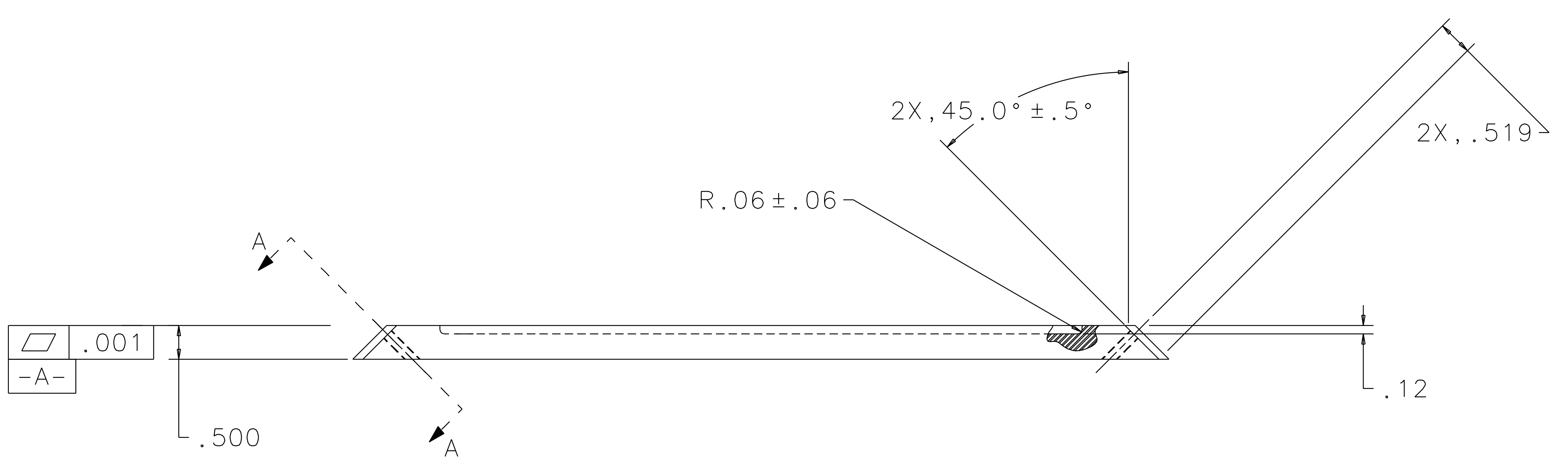
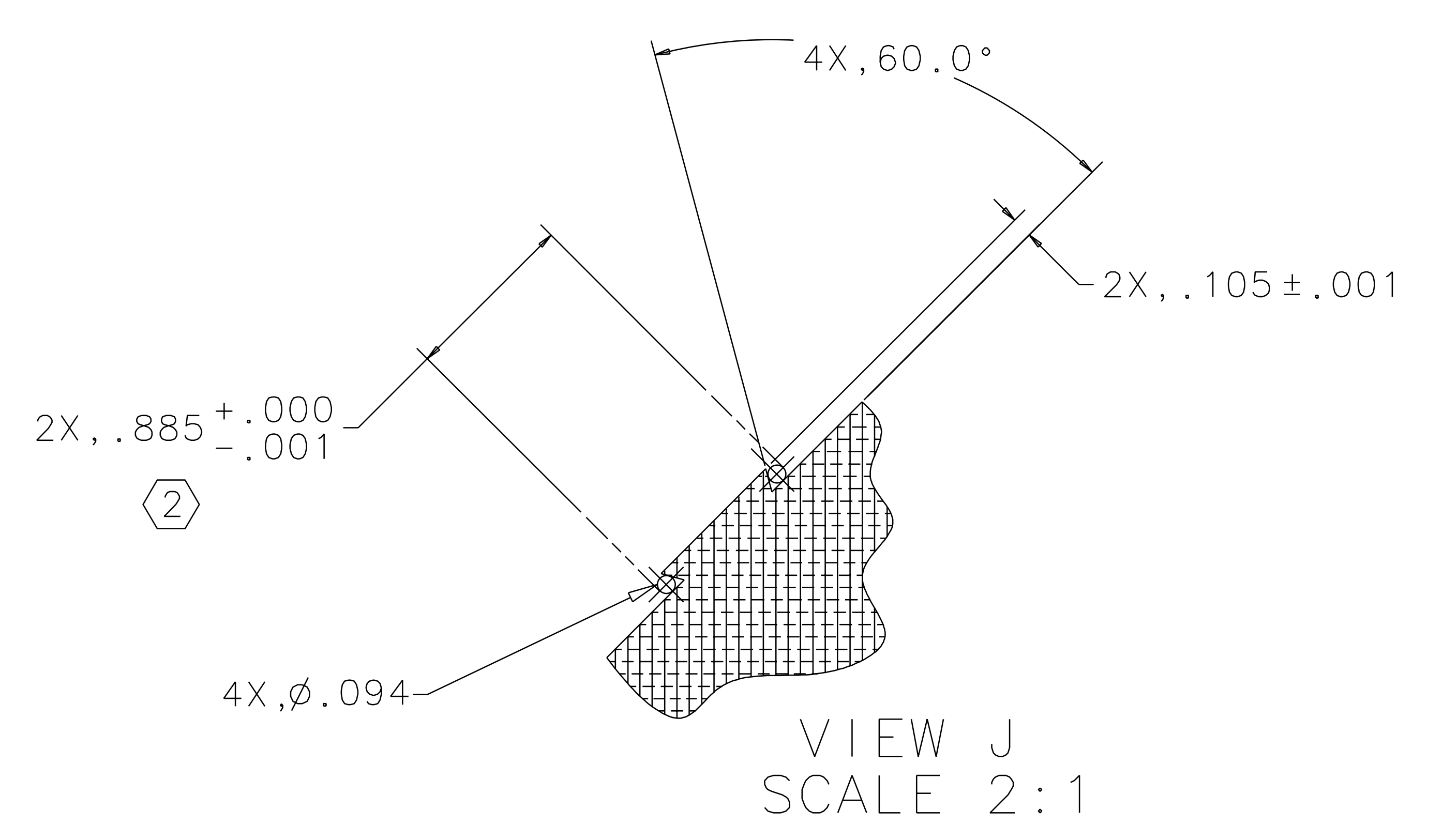
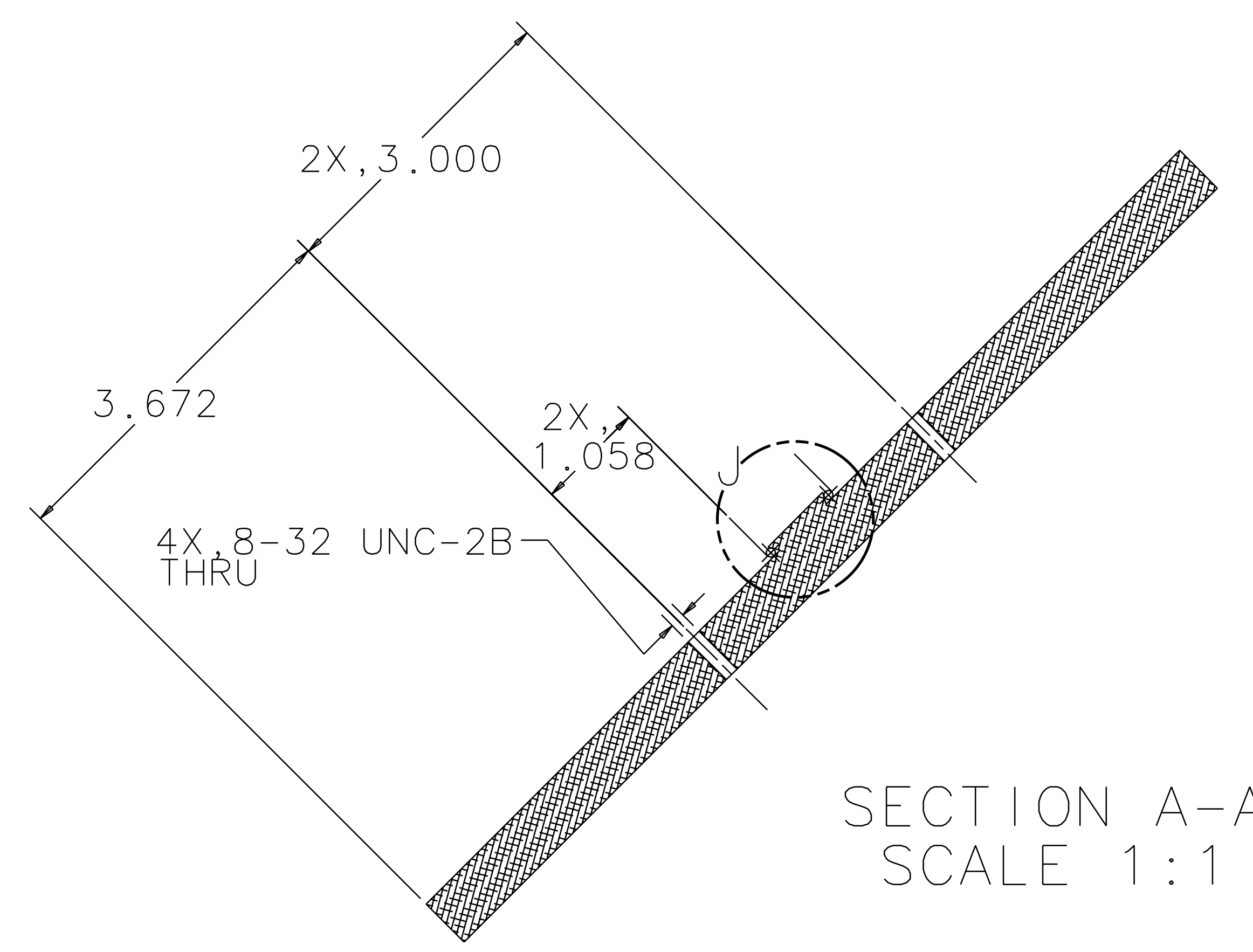
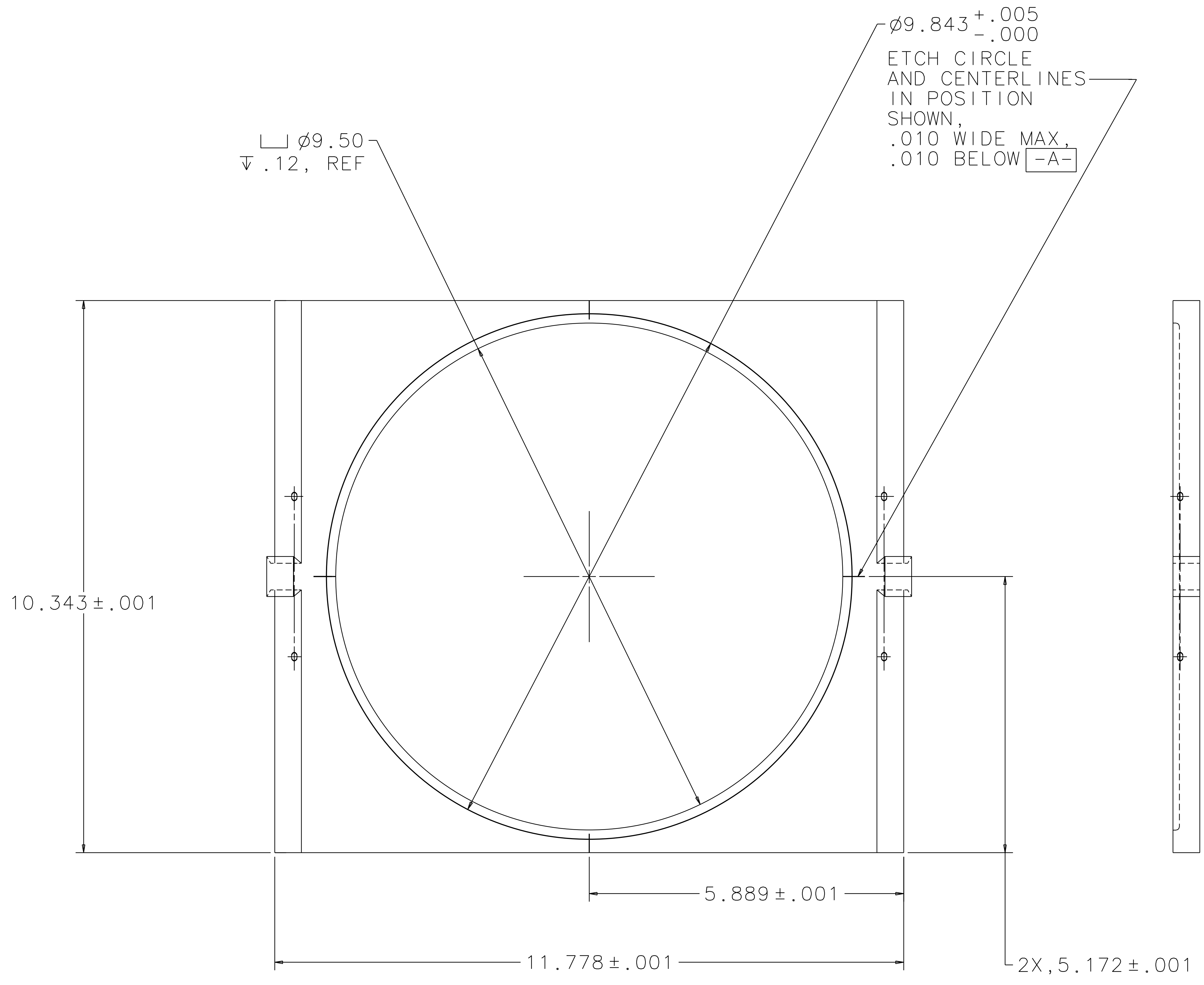


REF	QTY	PART OR IDENTIFYING NO	NOMENCLATURE OR DESCRIPTION	MATERIAL SPECIFICATION	ITEM NO
			OPTIC		13
			WIRE STANDOFF		12
			GUIDE ROD		11
			MAGNET/STANDOFF ASSEMBLY		10
					9
					8
					7
					6
					5
4			SCREW_SHCS, #8-32 x .75	STAINLESS STEEL	4
1			RIGHT BLOCK, TOP		3
1			LEFT BLOCK, TOP		2
1			BASE PLATE		1

UNLESS OTHERWISE SPECIFIED DIMENSIONS ARE IN INCHES		APPROVALS		DATE	LIGO CALIFORNIA INSTITUTE OF TECHNOLOGY MASSACHUSETTS INSTITUTE OF TECHNOLOGY	
FRACTIONS	DECIMALS	ANGLES	DRAWN	CHECKED	TITLE	FILE
0.XX±0.01			J. Romie	8/98	GUIDE ROD FIXTURE, BEAMSPLITTER OPTICS	
0.XXX±0.005						
ANGLES±0.5°						
DO NOT SCALE DRAWING						
NEXT ASSEMBLY		MATERIAL		FINISH		SCALE
D970505, D970539						1/1
FILE LOCATION						SHEET 1 OF 3
/home/dcc/docs/D970550.pdf						

1 2 3 4 5 6 7 8

REV	DATE	DRAWN BY	CHECKED	DCC	DCN/DESCRIPTION
A	8-14-98	J. Romie			E980220/INITIAL RELEASE

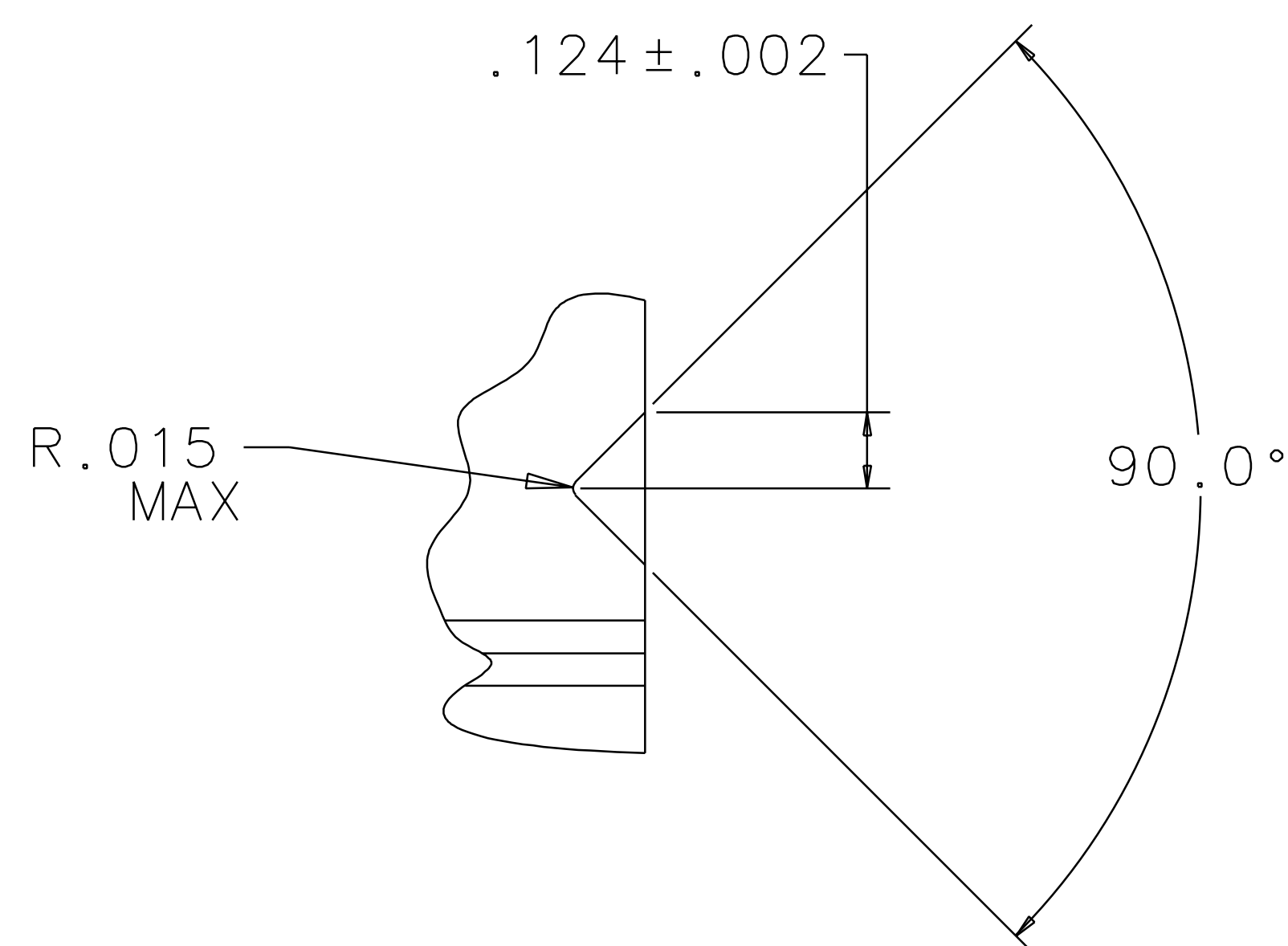


BASE PLATE
 MATERIAL: 6061-T6 ALUM

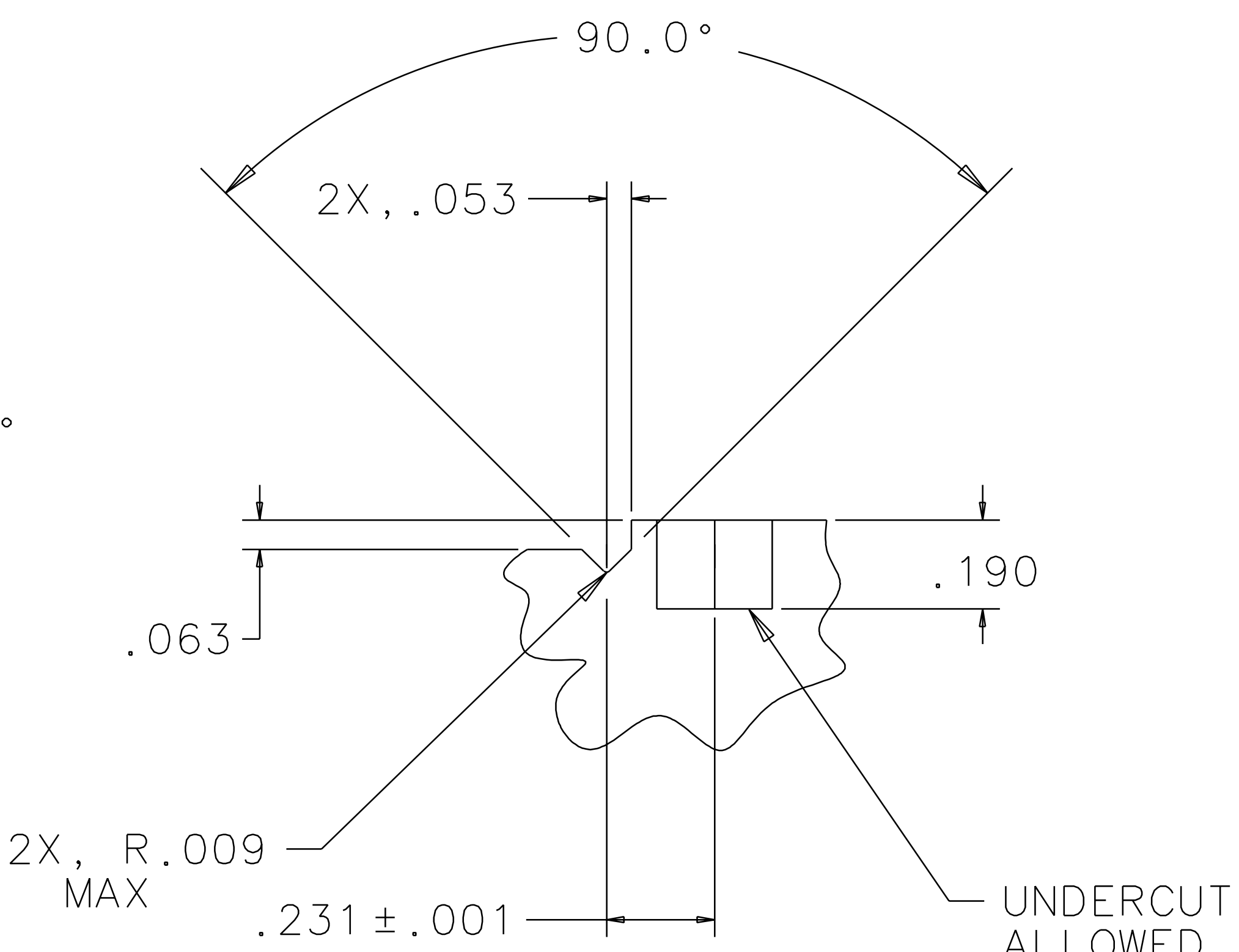
QTY REQ	PART OR IDENTIFYING NO	NOMENCLATURE OR DESCRIPTION	MATERIAL SPECIFICATION	ITEM NO.
PARTS LIST				
UNLESS OTHERWISE SPECIFIED DIMENSIONS ARE IN INCHES TOLERANCES ARE: FRACTIONS DECIMALS ANGLES		APPROVALS	DATE	TITLE
DO NOT SCALE DRAWING		J. Romie	8/98	LIGO CALIFORNIA INSTITUTE OF TECHNOLOGY MASSACHUSETTS INSTITUTE OF TECHNOLOGY
MATERIAL		SCALE 1/1		REV A
FINISH		D970550		SHEET 2 OF 3

1 2 3 4 5 6 7 8

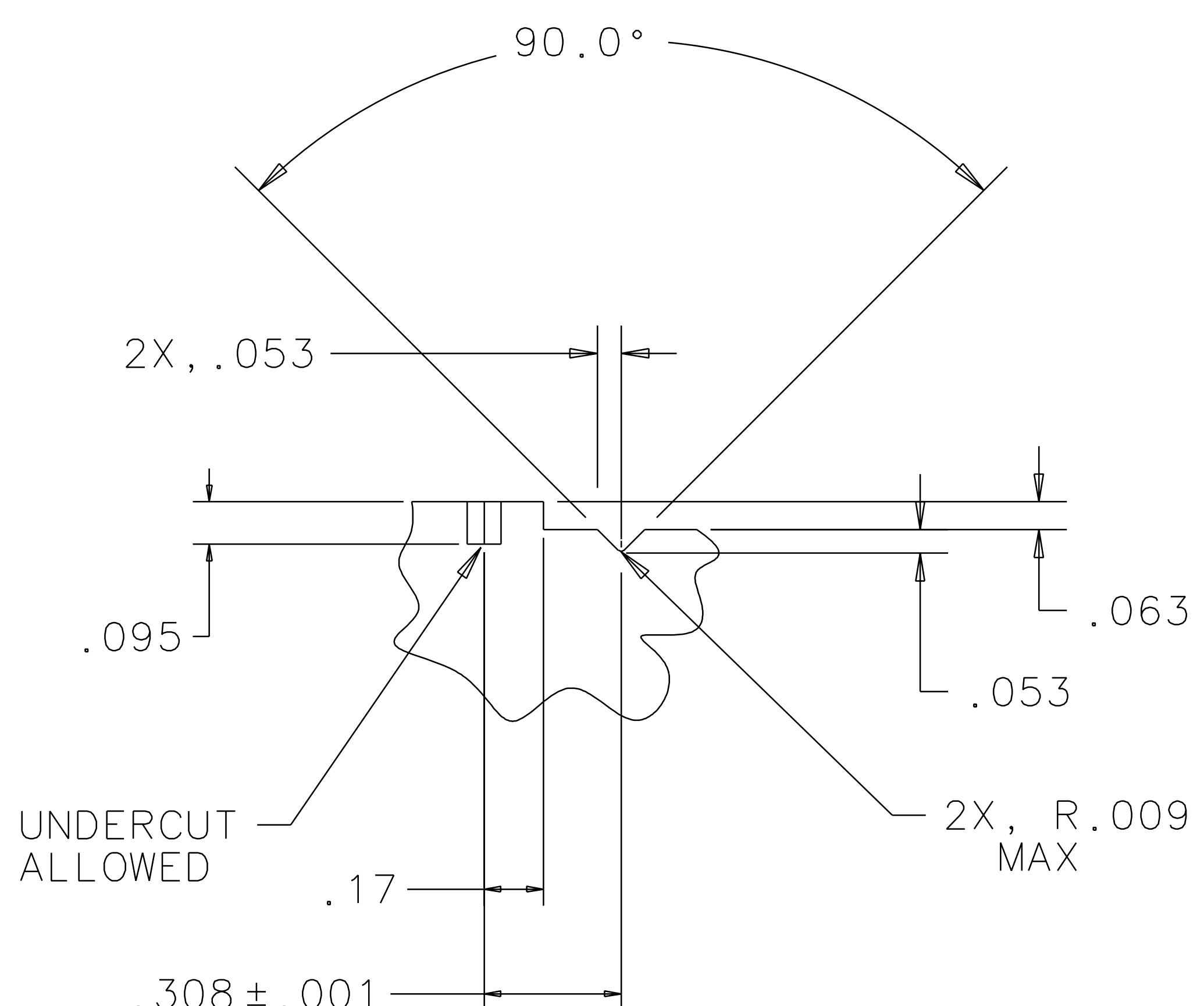
REV	DATE	DRAWN BY	CHECKED	DCC	DCN/DESCRIPTION
A	8-14-98	J. Romie			E980220/INITIAL RELEASE



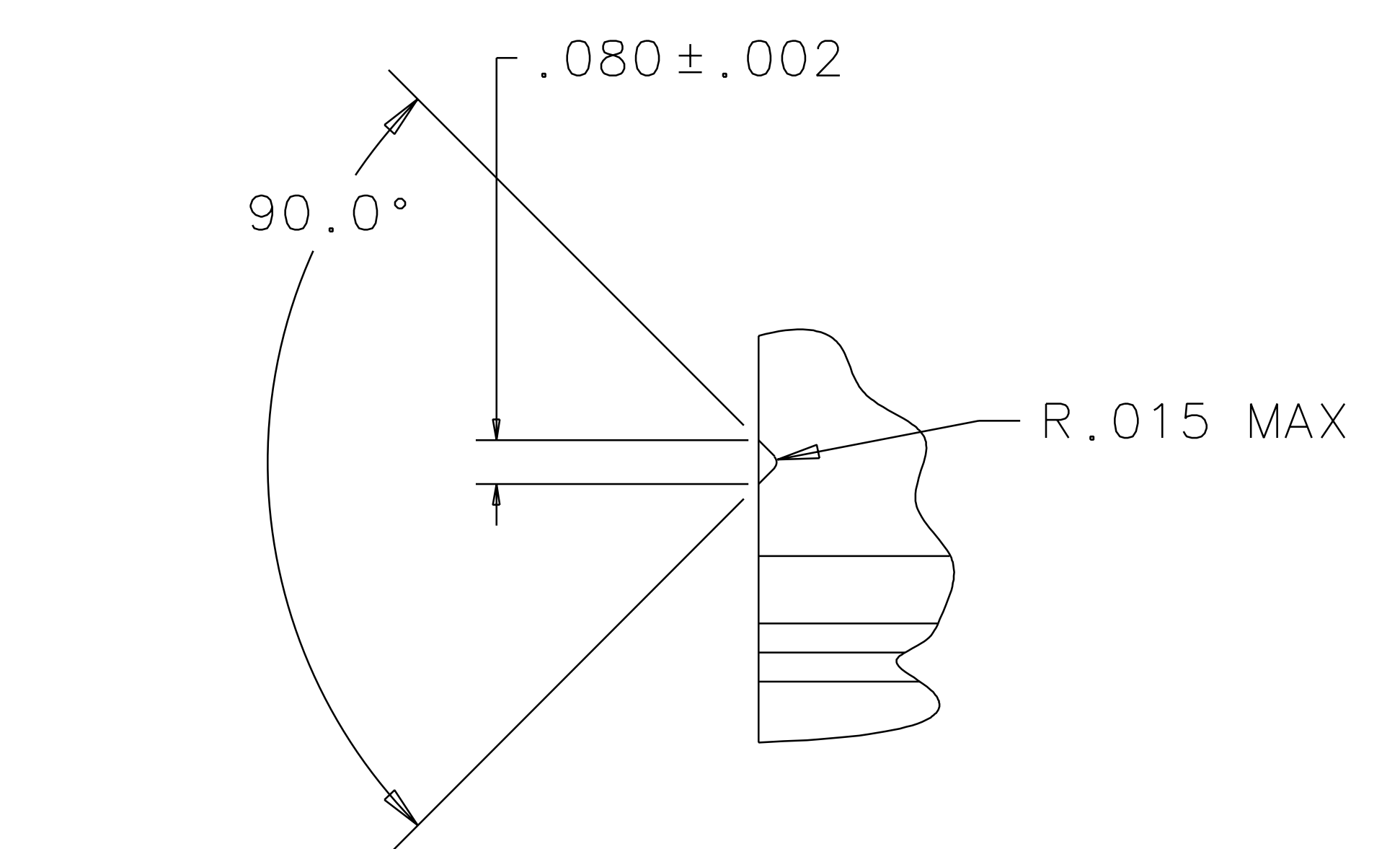
VIEW C
SCALE 4:1



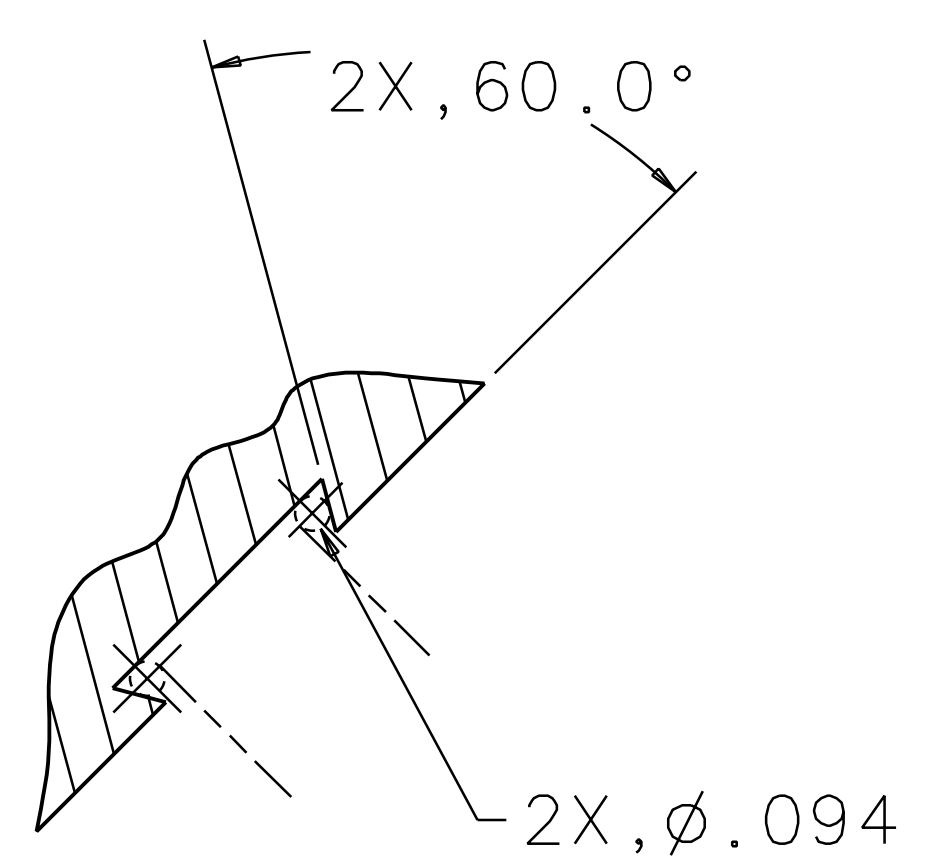
VIEW D
SCALE 4:1



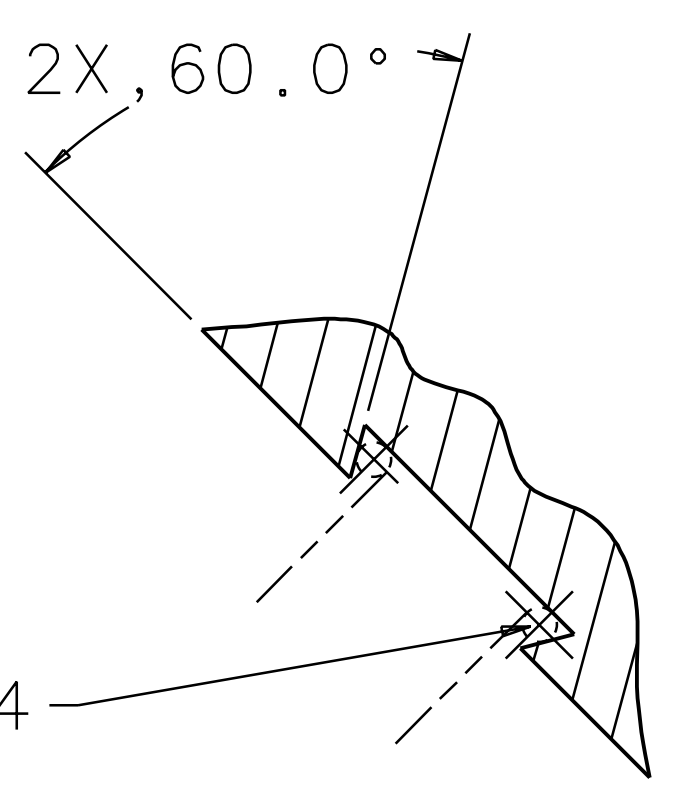
VIEW H
SCALE 4:1



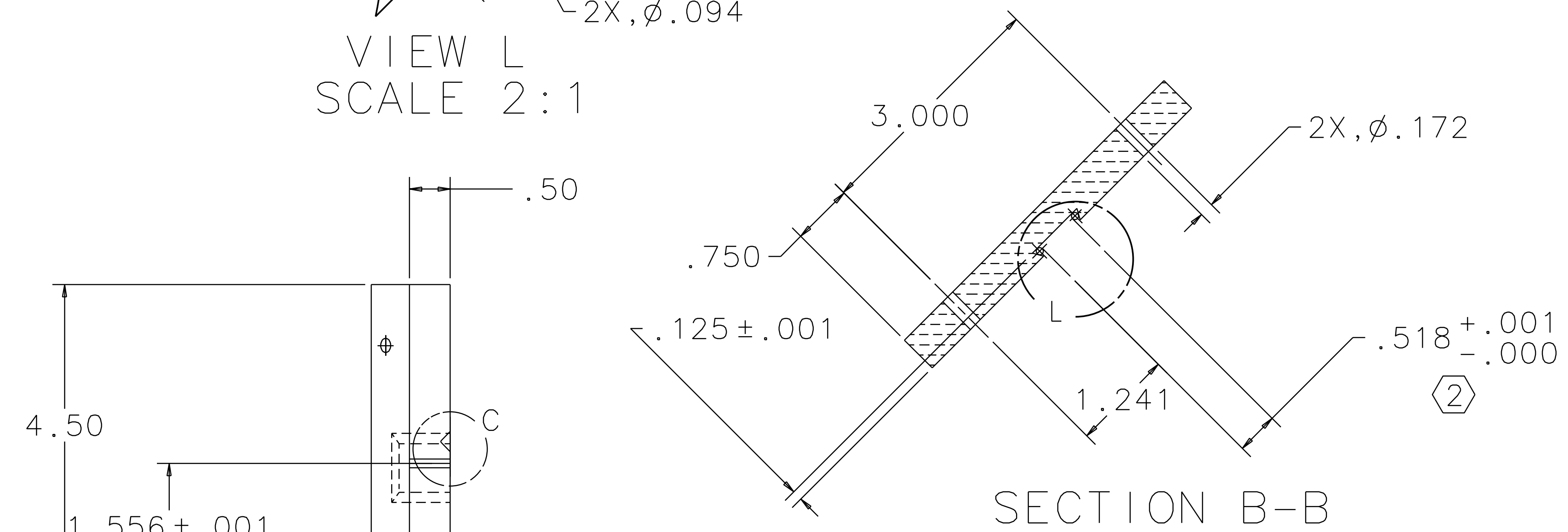
VIEW G
SCALE 4:1



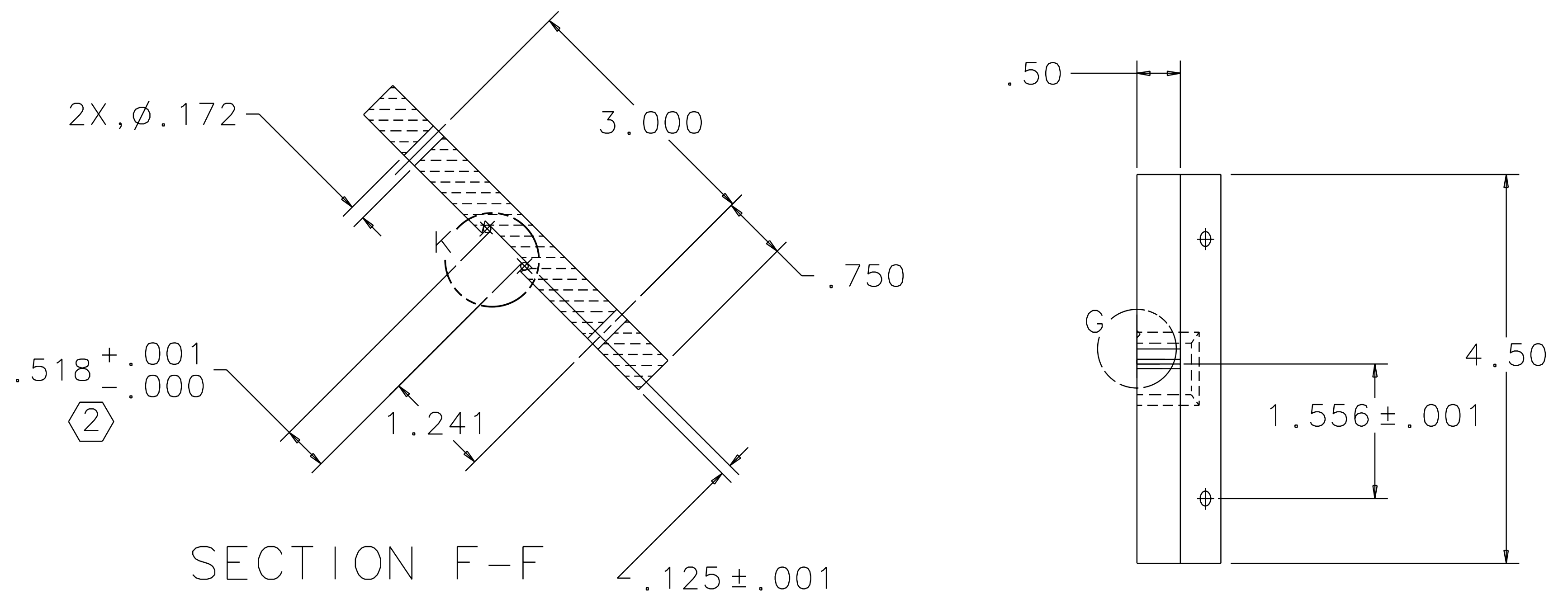
VIEW L
SCALE 2:1



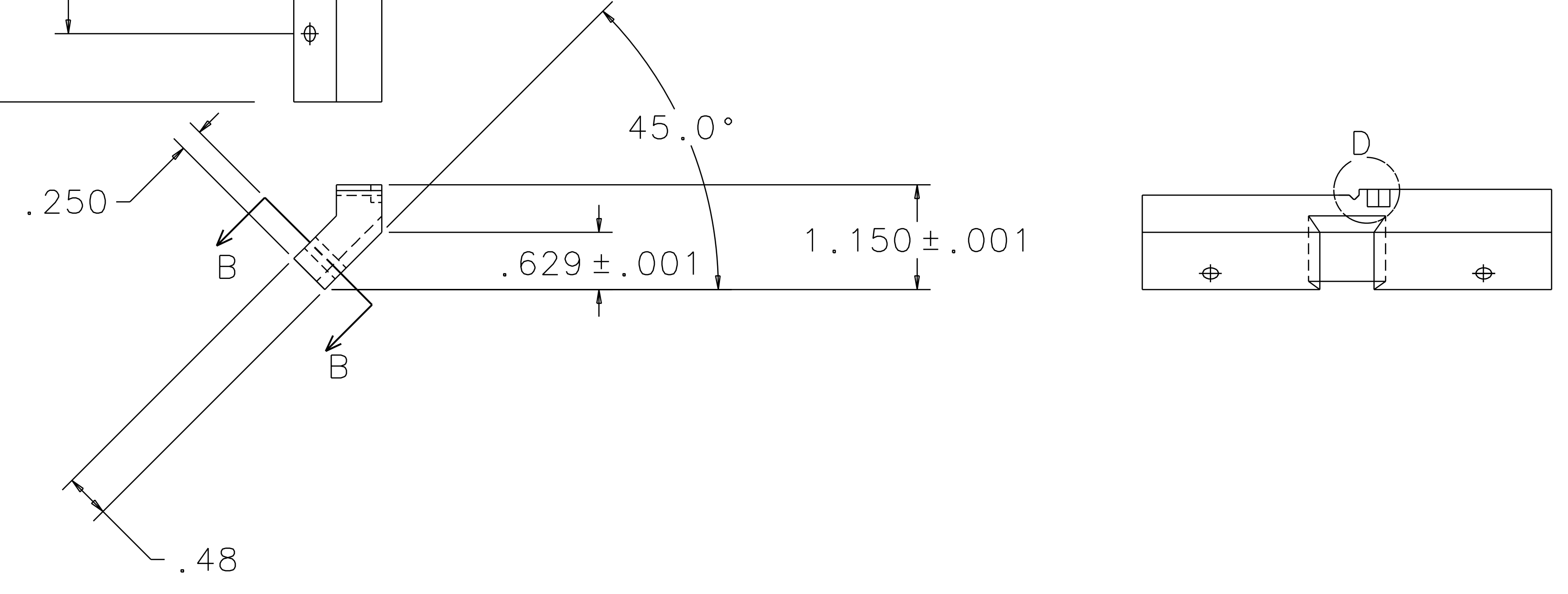
VIEW K
SCALE 2:1



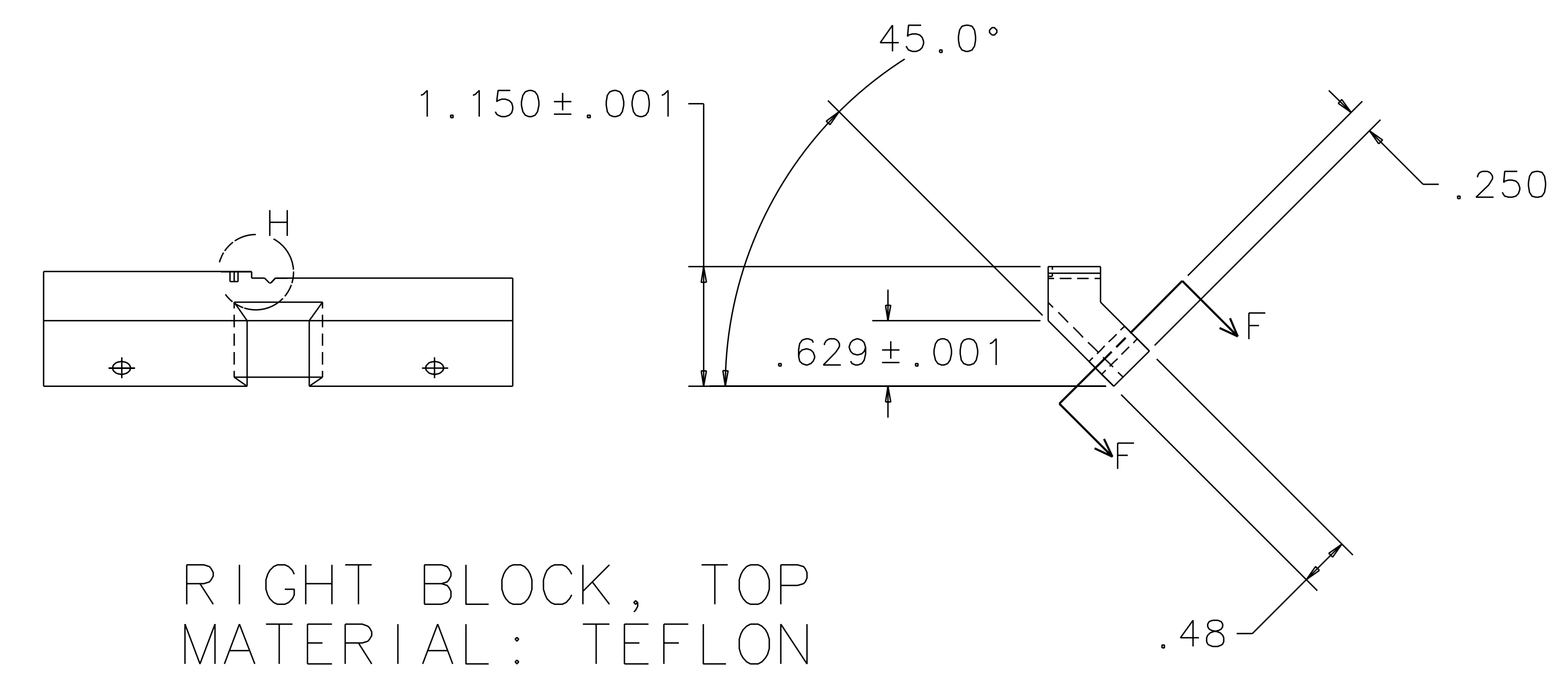
SECTION B-B



SECTION F-F



LEFT BLOCK, TOP
MATERIAL: TEFLON



RIGHT BLOCK, TOP
MATERIAL: TEFLON

QTY REQ	PART OR IDENTIFYING NO	NOMENCLATURE OR DESCRIPTION	MATERIAL SPECIFICATION	ITEM NO.
UNLESS OTHERWISE SPECIFIED DIMENSIONS ARE IN INCHES				
TOLERANCES ARE:				
FRACTIONS DECIMALS ANGLES				
0. XX ± 0.01				
0. XXX ± 0.005				
ANGLES ± 0.5°				
DO NOT SCALE DRAWING				
APPROVALS		DATE	LIGO CALIFORNIA INSTITUTE OF TECHNOLOGY	
DRAWN J. Romie		8/98	MASSACHUSETTS INSTITUTE OF TECHNOLOGY	
CHECKED			TITLE	
			GUIDE ROD FIXTURE, BEAMSPLITTER OPTICS	
NEXT ASSEMBLY		MATERIAL	SIZE	REV
			E	A
FILE LOCATION		FINISH	SCALE	SHEET
			1/1	3 OF 3

1 2 3 4 5 6 7 8