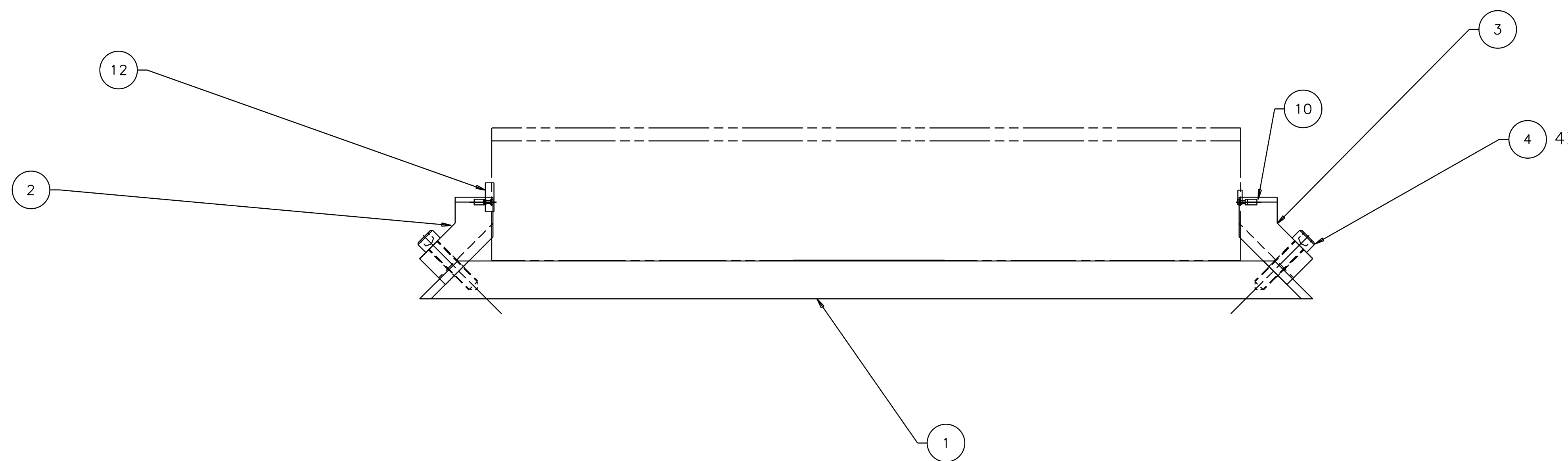
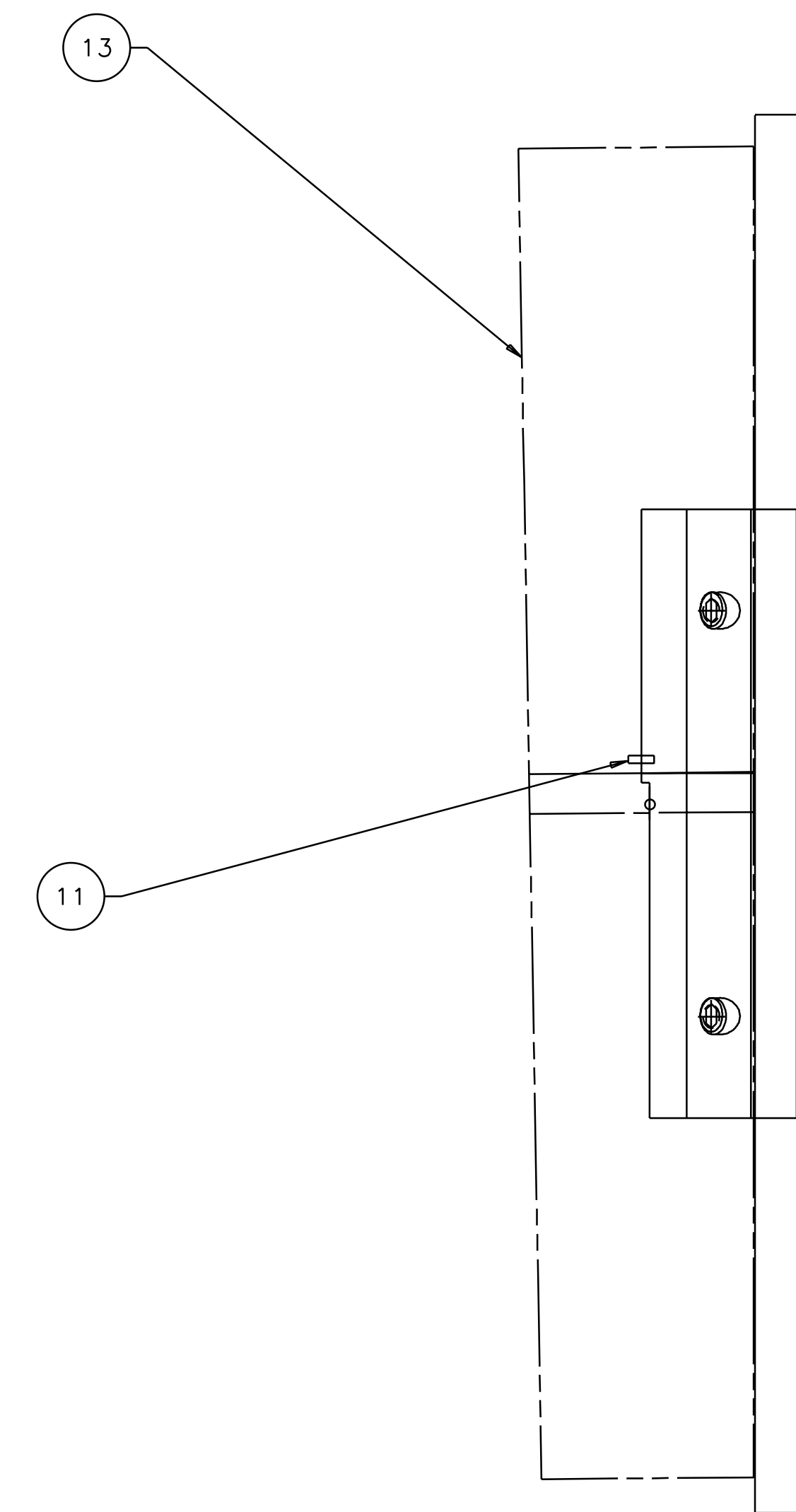
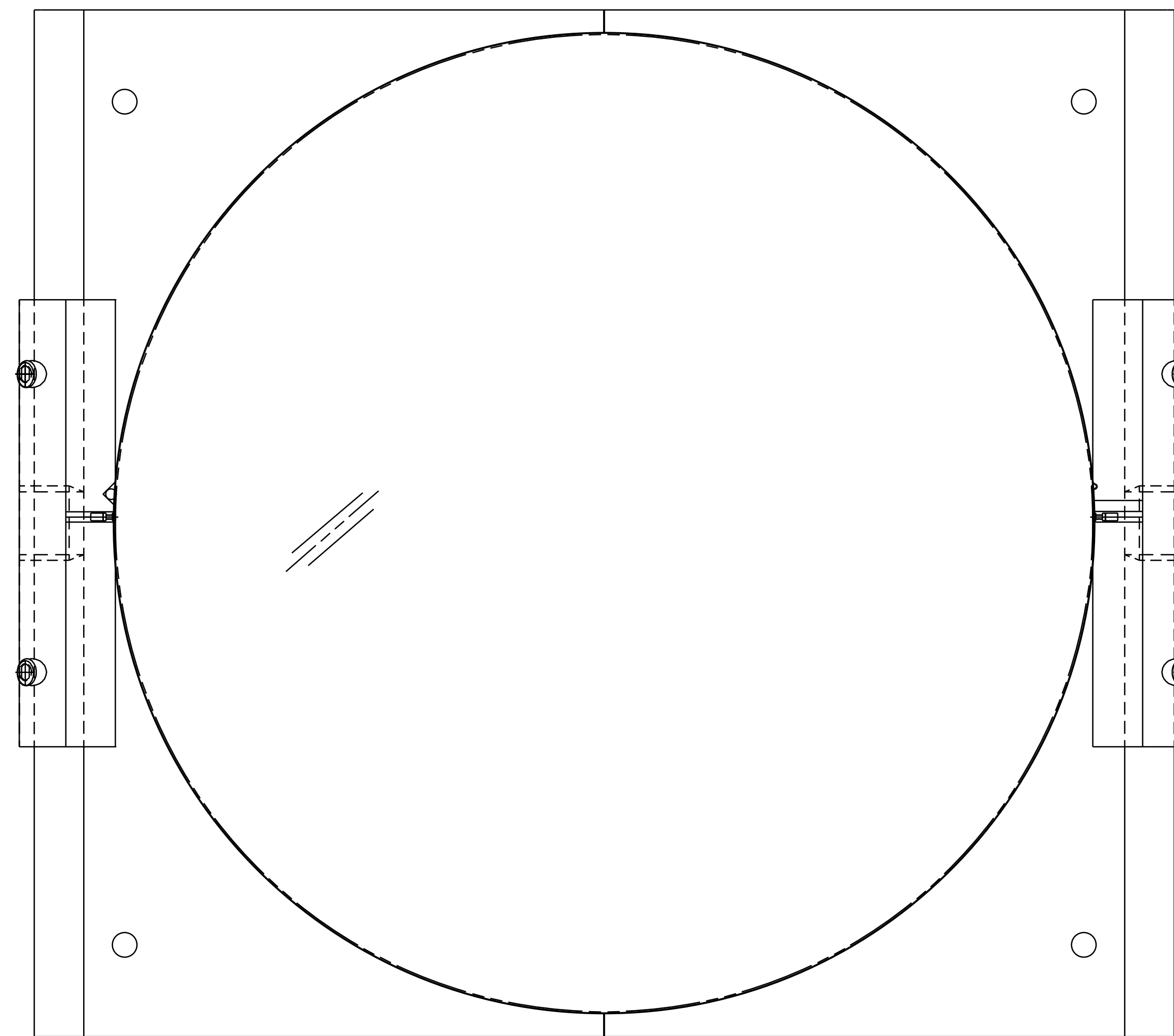


1 2 3 4 5 6 7 8

REV	DATE	DRAWN BY	CHECKED	DCC	DCN/DESCRIPTION
A	8-14-98	J. Romie			E980220/INITIAL RELEASE
B	9-22-98	J. Romie			E980249/ADD HOLES IN BASE
C	6-21-99	J. Romie			E990258/CHANGE DIM., SH 2

- NOTES: (UNLESS OTHERWISE SPECIFIED)
- THIS FIXTURE IS TO BE USED WITH AN OPTIC THAT IS $\phi 9.84"$ X $1.575"$ THICK ($\phi 25\text{cm}$ X 4cm THICK) WITH A 1 DEGREE, THICK-SIDE-UP ORIENTED WEDGE.
 - CLOSE SLIP FIT.
 - THE RIGHT BLOCK, TOP IS USED TO MOUNT THE GUIDE ROD AND THE LEFT BLOCK, TOP IS USED TO MOUNT THE WIRE STANDOFF.
 - USE OF THIS FIXTURE IS COVERED IN LIGO-E970154.
 - SPECIFICATIONS COVERING THE FABRICATION OF THIS ASSEMBLY ARE DETAILED IN LIGO-E970155, THE LARGE OPTIC SUSPENSION (LOS) FIXTURES AND COMPONENTS FABRICATION SPECIFICATION.



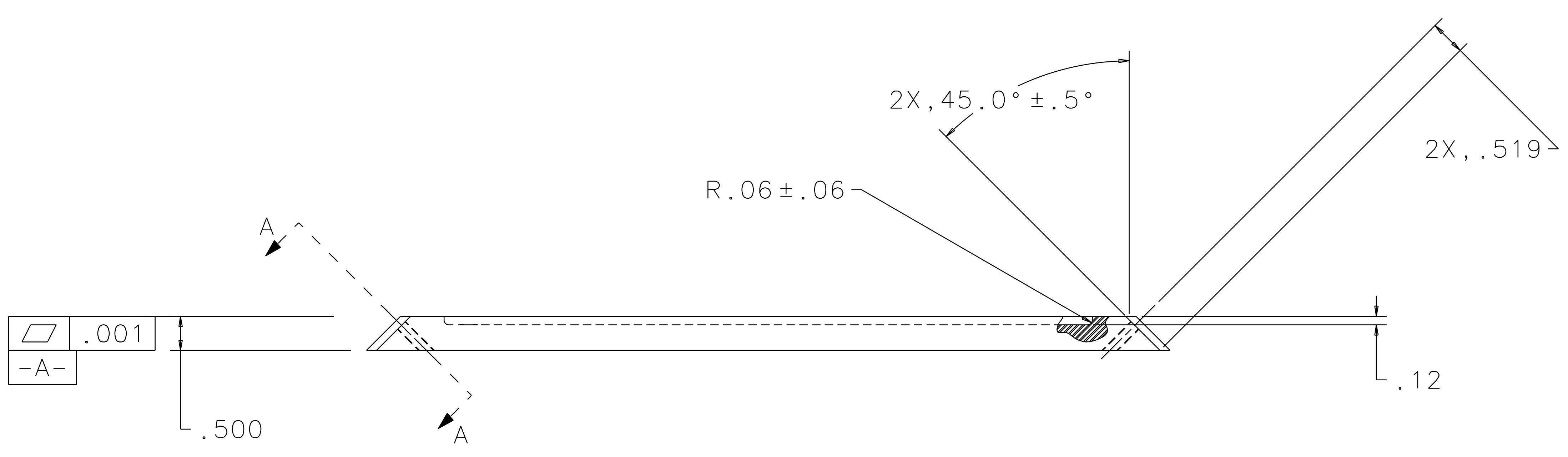
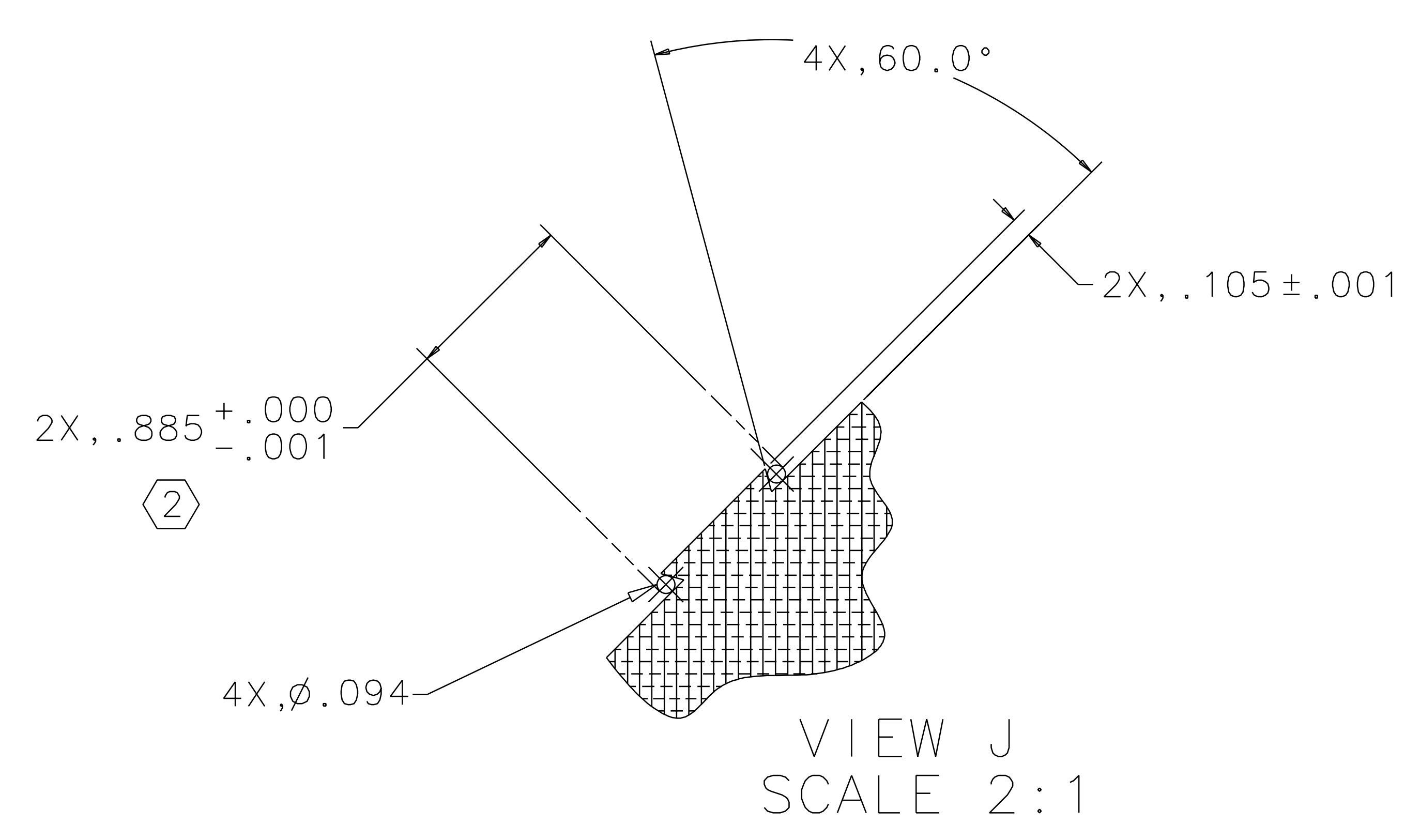
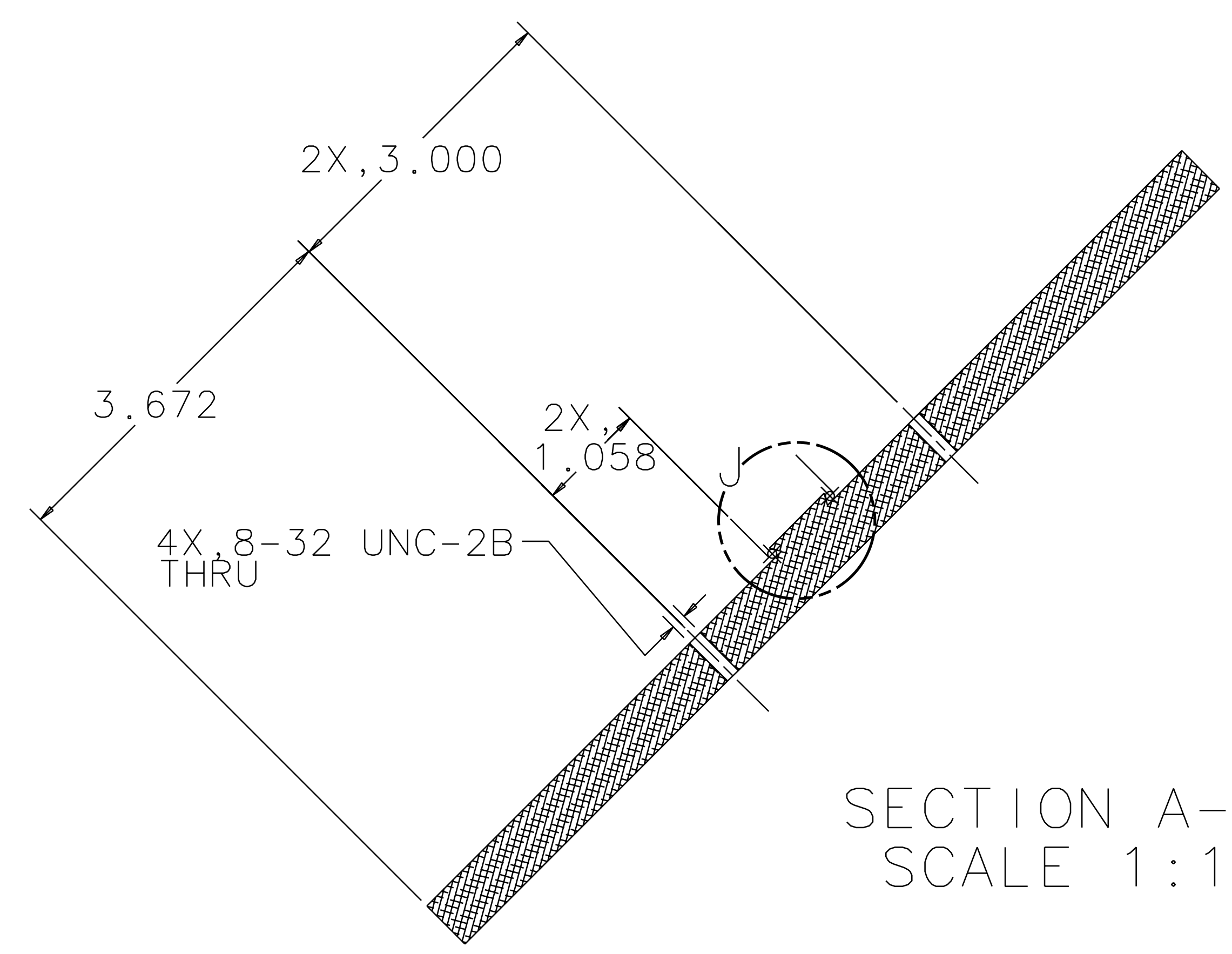
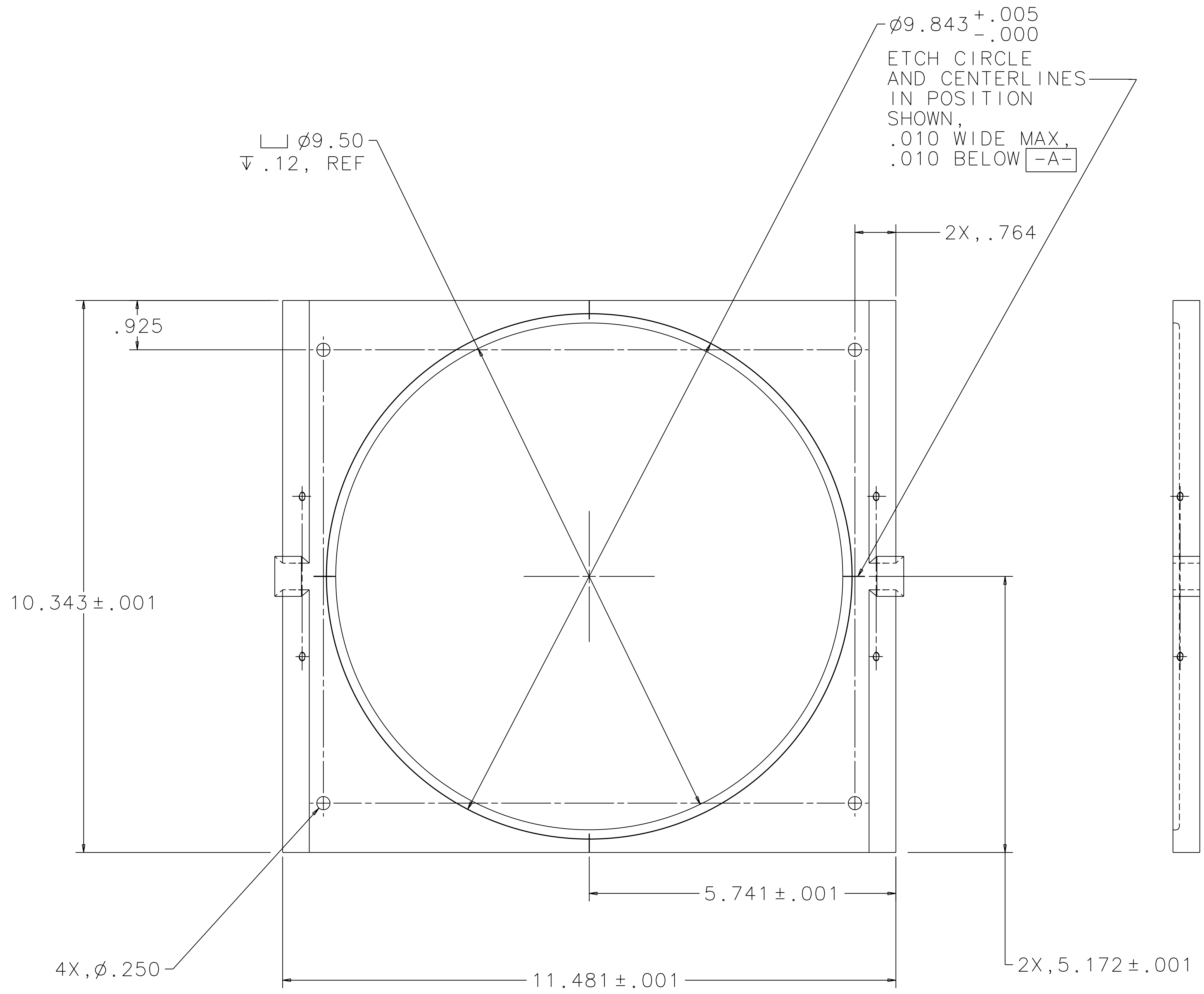
REF	QTY	PART OR IDENTIFYING NO	NOMENCLATURE OR DESCRIPTION	MATERIAL SPECIFICATION	ITEM NO
			OPTIC		13
			WIRE STANDOFF		12
			GUIDE ROD		11
			MAGNET/STANDOFF ASSEMBLY		10
					9
					8
					7
					6
					5
4			SCREW, SHCS, #8-32 x .75	STAINLESS STEEL	4
1			RIGHT BLOCK, TOP		3
1			LEFT BLOCK, TOP		2
1			BASE PLATE		1

APPROVALS		DATE	TITLE	
DRAWN	J. Romie	8/98	LIGO CALIFORNIA INSTITUTE OF TECHNOLOGY MASSACHUSETTS INSTITUTE OF TECHNOLOGY	
CHECKED			GUIDE ROD FIXTURE, BEAMSPLITTER OPTICS A	
DO NOT SCALE DRAWING			SIZE	D970550
NEXT ASSEMBLY			SCALE	1/1
D970505, D970539				REV C
FILE LOCATION				SHEET 1 OF 3
/home/dcc/docs/D970550.pdf				

1 2 3 4 5 6 7 8

1 2 3 4 5 6 7 8

REV	DATE	DRAWN BY	CHECKED	DCC	DCN/DESCRIPTION
A	8-14-98	J. Romie			E980220/INITIAL RELEASE
B	9-22-98	J. Romie			E980249/ADD HOLES ON BASE
C	6-21-99	J. Romie			E990258/CHANGE DIMS., SH 2

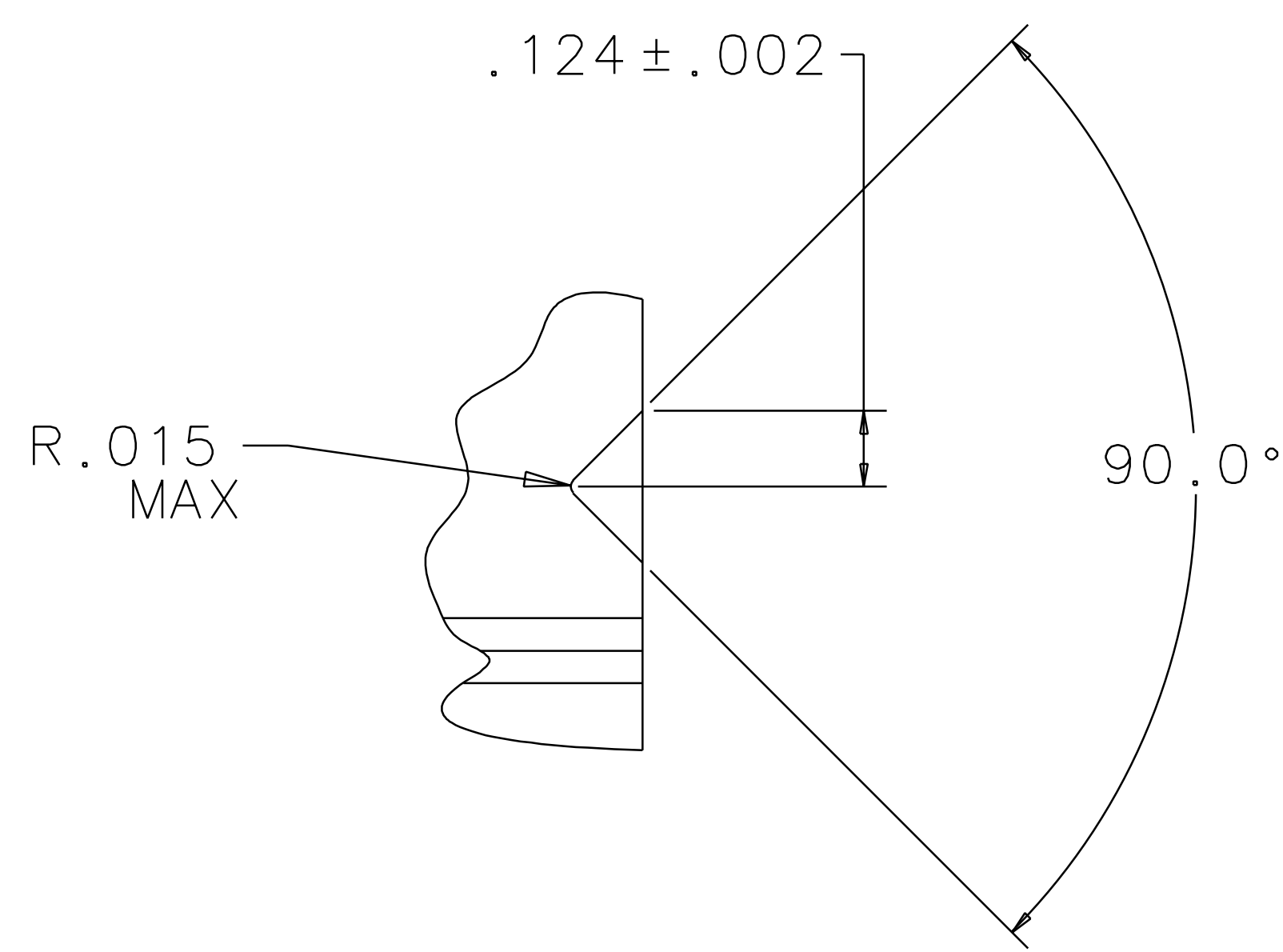


BASE PLATE
 MATERIAL: 6061-T6 ALUM

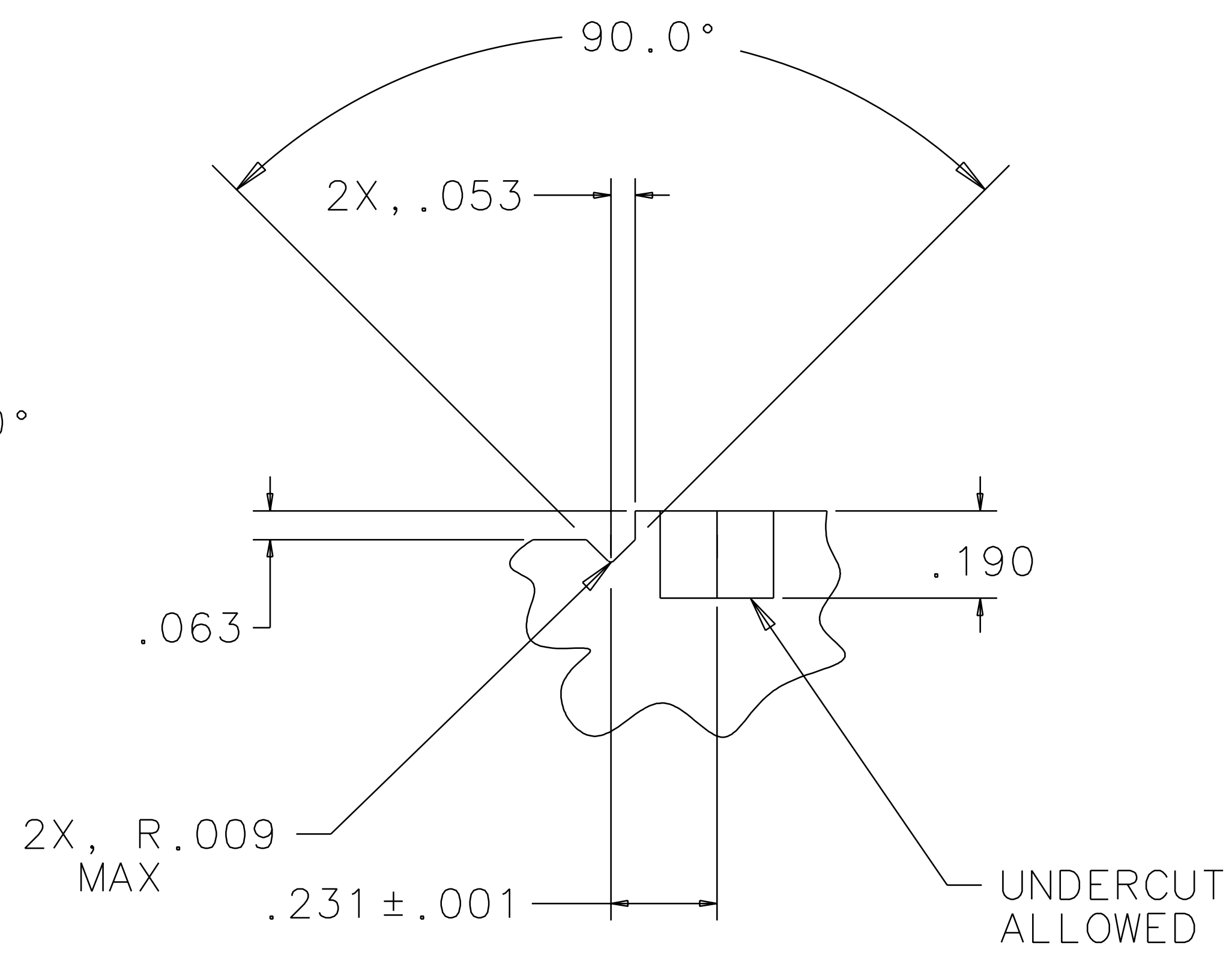
QTY REQD	PART OR IDENTIFYING NO	NOMENCLATURE OR DESCRIPTION	MATERIAL SPECIFICATION	ITEM NO.
PARTS LIST				
UNLESS OTHERWISE SPECIFIED DIMENSIONS ARE IN INCHES		APPROVALS		
TOLERANCES ARE:		DATE	LIGO CALIFORNIA INSTITUTE OF TECHNOLOGY	
FRACTIONS	DECIMALS	8/98	MASSACHUSETTS INSTITUTE OF TECHNOLOGY	
ANGLES	TITLE			
$0.XX \pm 0.01$	GUIDE ROD FIXTURE, BEAMSPLITTER OPTICS			
$0.XXX \pm 0.005$	DRAWN J. Romie			
ANGLES $\pm 0.5^\circ$	CHECKED			
DO NOT SCALE DRAWING				
NEXT ASSEMBLY		MATERIAL		
FILE LOCATION		FINISH		
SCALE 1/1		SHEET 2 OF 3		

1 2 3 4 5 6 7 8

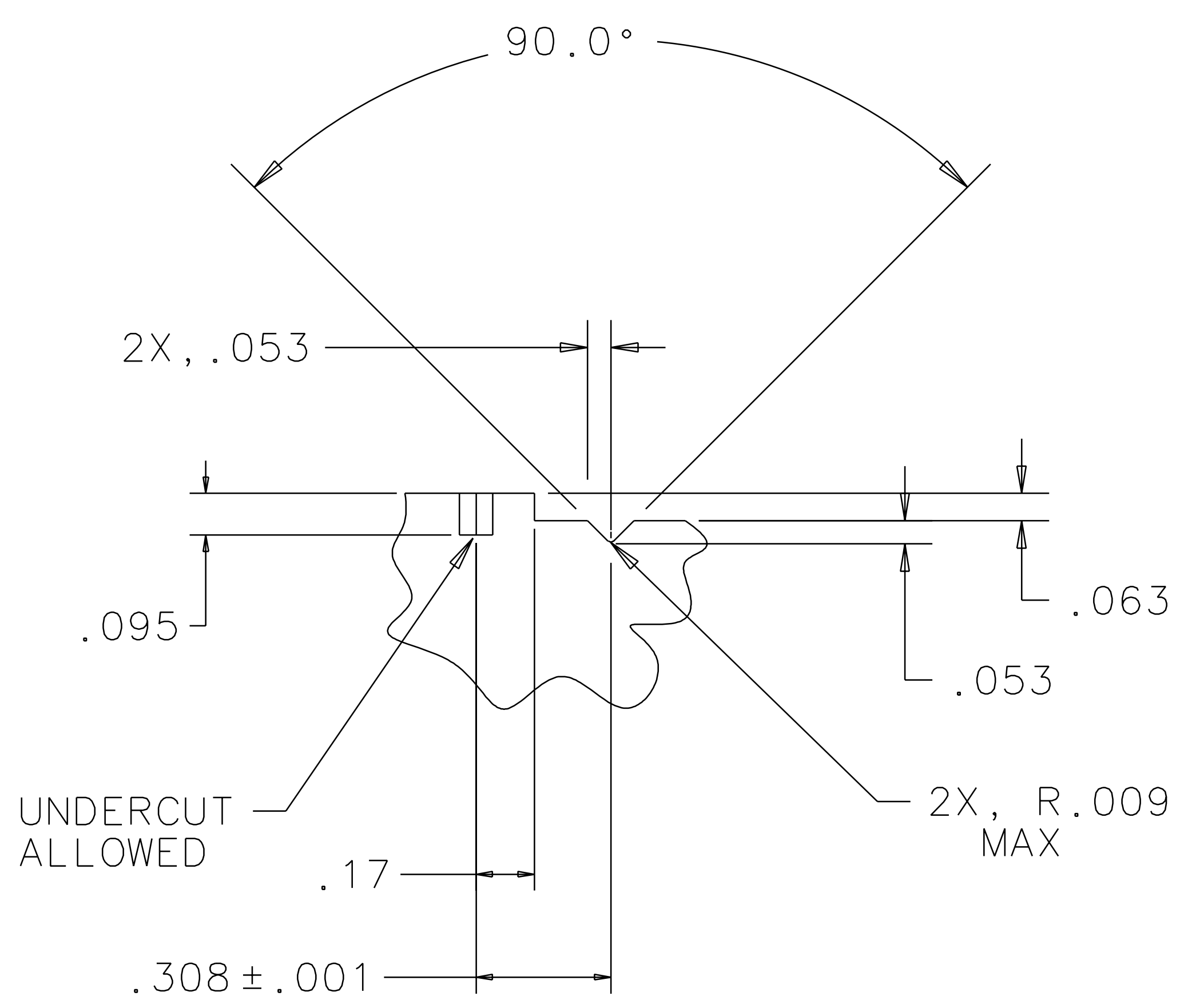
REV	DATE	DRAWN BY	CHECKED	DCC	DCN/DESCRIPTION
A	8-14-98	J. Romie			E980220/INITIAL RELEASE
B	9-22-98	J. Romie			E980249/ADD HOLES IN BASE
C	6-21-99	J. Romie			E990258/CHANGE DIMS., SH 2



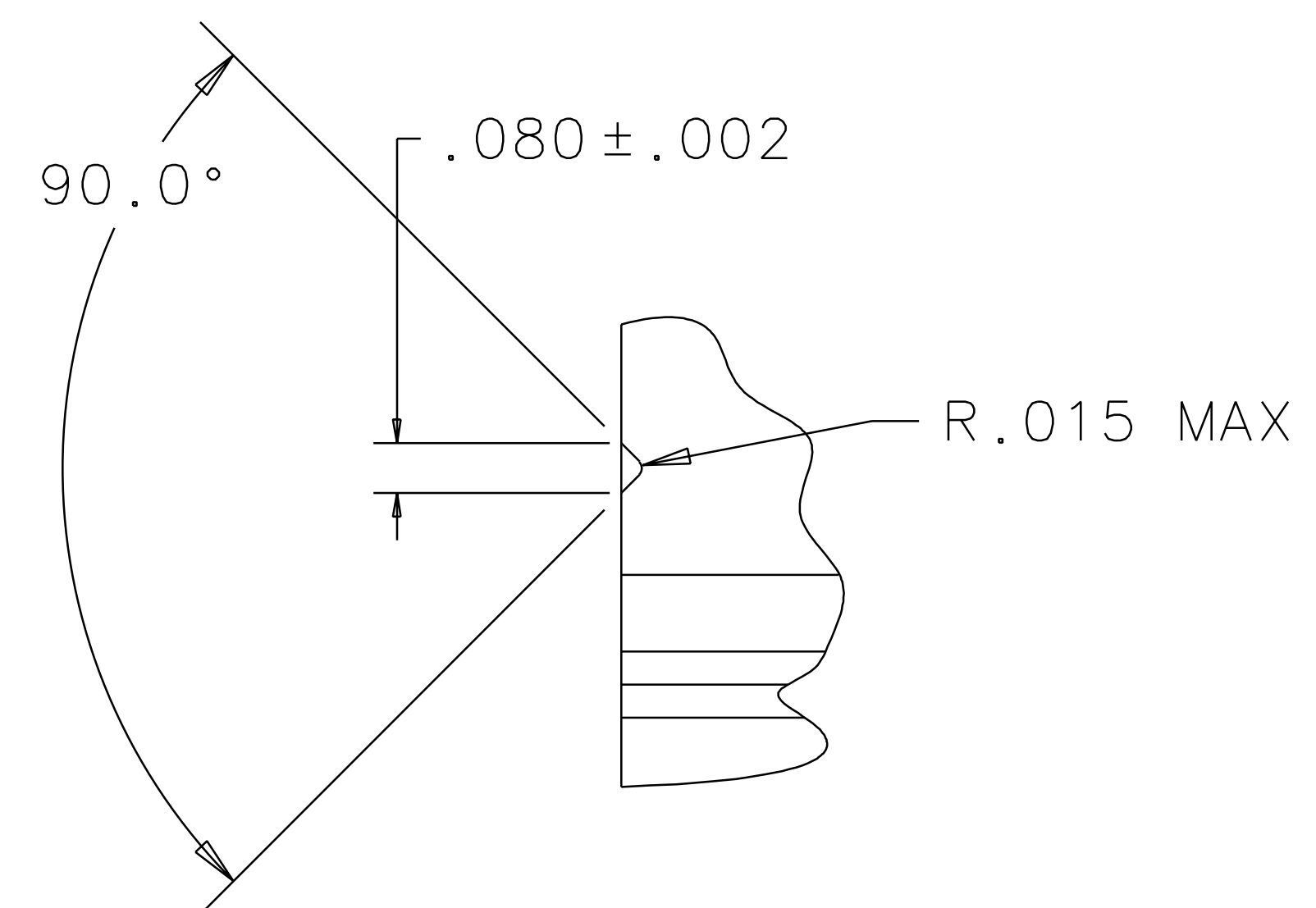
VIEW C
SCALE 4:1



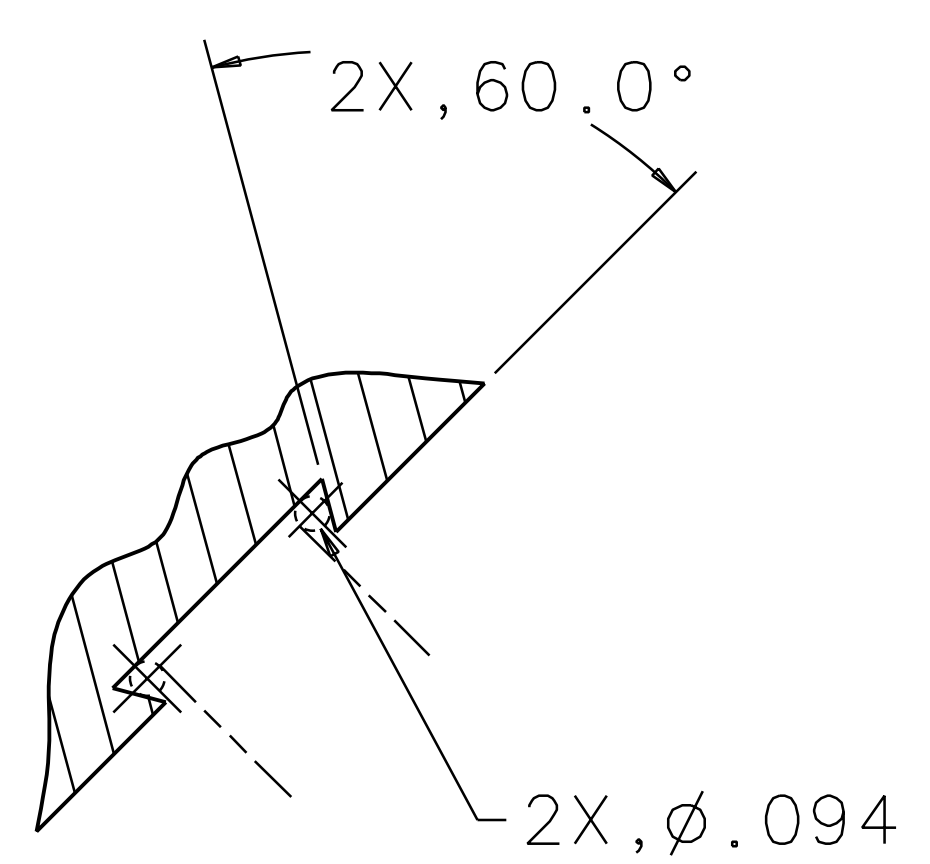
VIEW D
SCALE 4:1



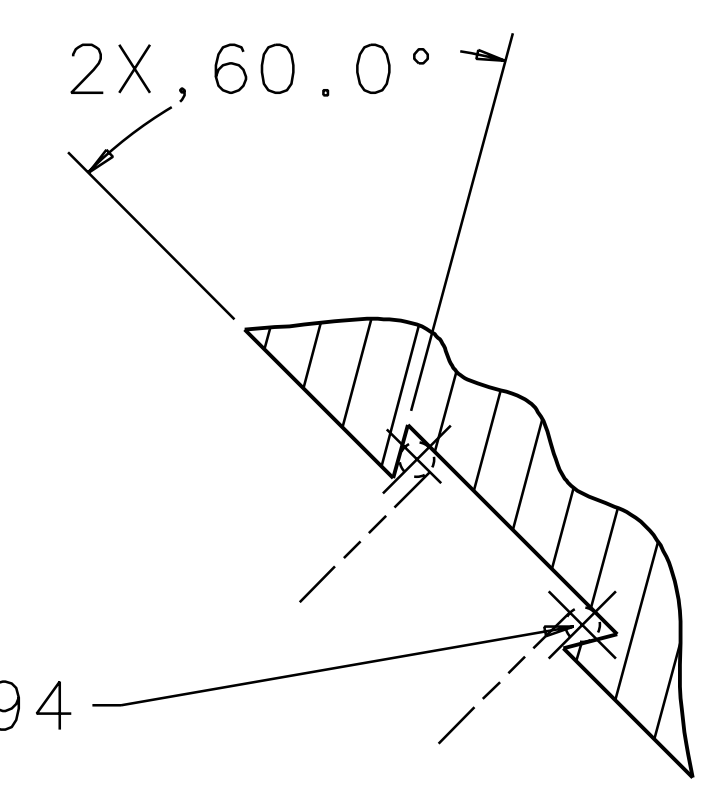
VIEW H
SCALE 4:1



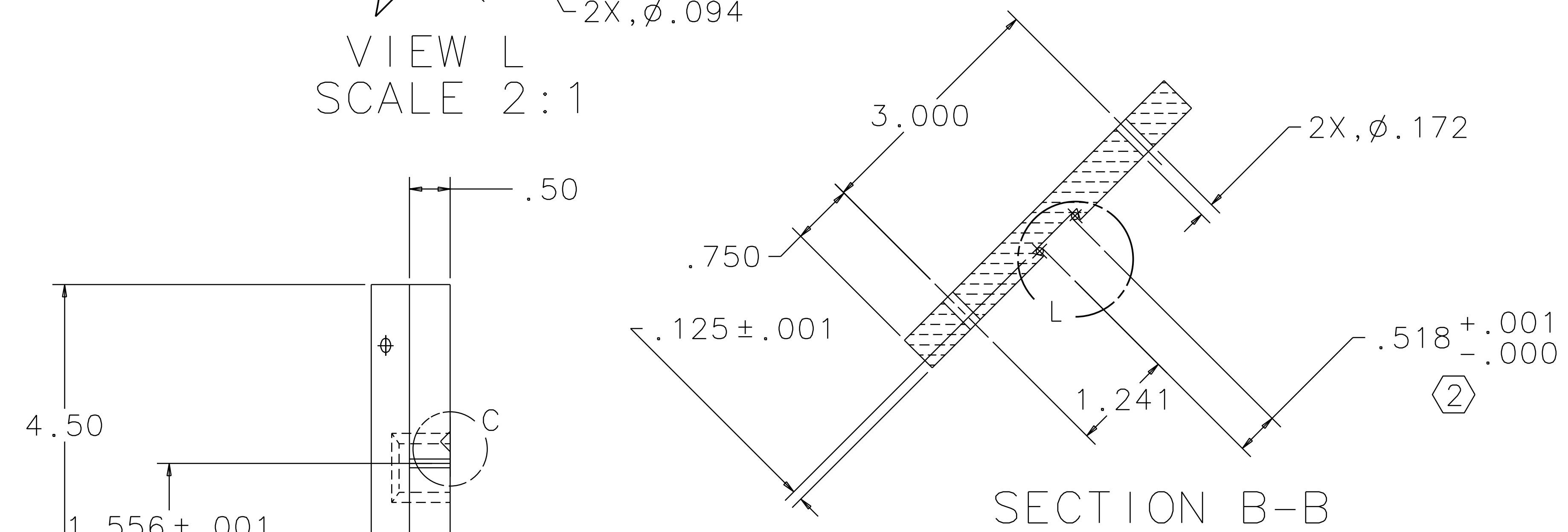
VIEW G
SCALE 4:1



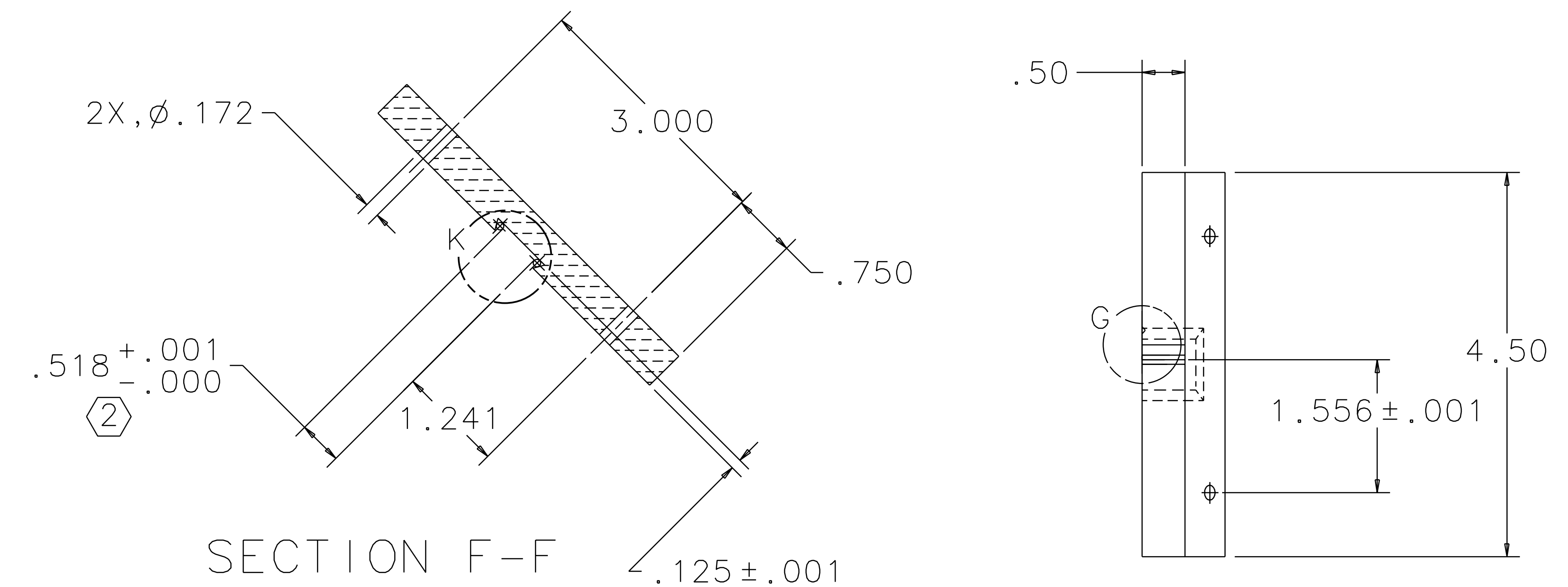
VIEW L
SCALE 2:1



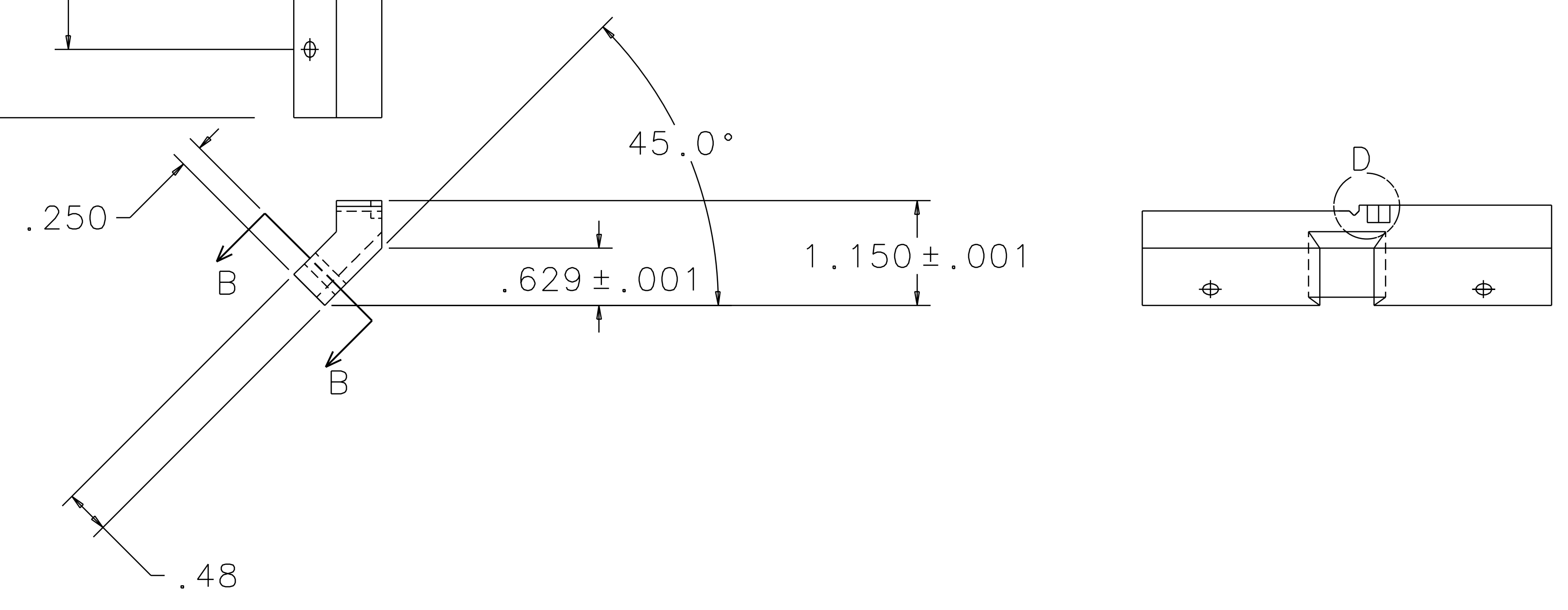
VIEW K
SCALE 2:1



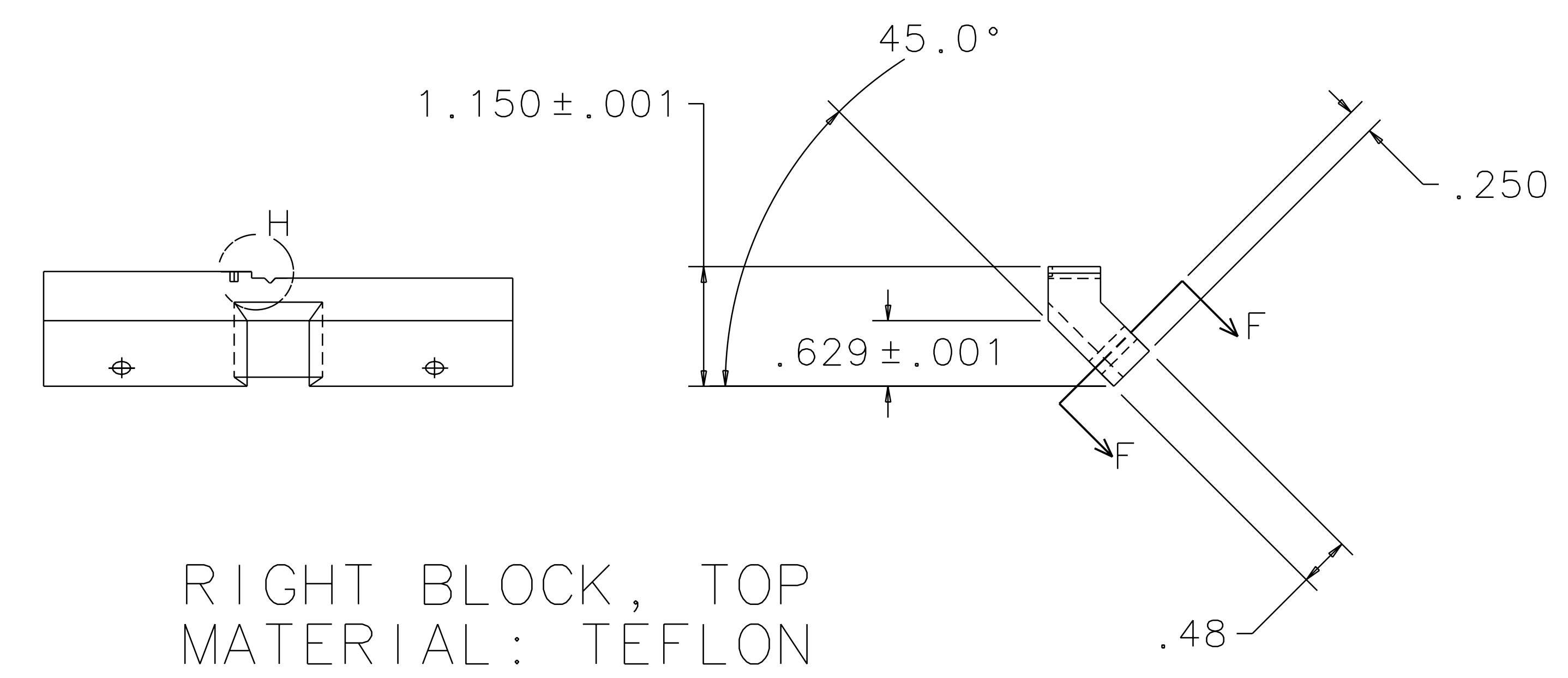
SECTION B-B



SECTION F-F



LEFT BLOCK, TOP
MATERIAL: TEFLON



RIGHT BLOCK, TOP
MATERIAL: TEFLON

QTY REQ	PART OR IDENTIFYING NO	NOMENCLATURE OR DESCRIPTION	MATERIAL SPECIFICATION	ITEM NO.
		LIGO CALIFORNIA INSTITUTE OF TECHNOLOGY MASSACHUSETTS INSTITUTE OF TECHNOLOGY		
UNLESS OTHERWISE SPECIFIED DIMENSIONS ARE IN INCHES		APPROVALS	DATE	TITLE
TOLERANCES ARE:				
FRACTIONS DECIMALS ANGLES				
0.XX±0.01				
0.XXX±0.005				
ANGLES±0.5°				
DO NOT SCALE DRAWING				
NEXT ASSEMBLY	MATERIAL			SIZE
FILE LOCATION	FINISH			E D970550
				SCALE 1/1
				SHEET 3 OF 3