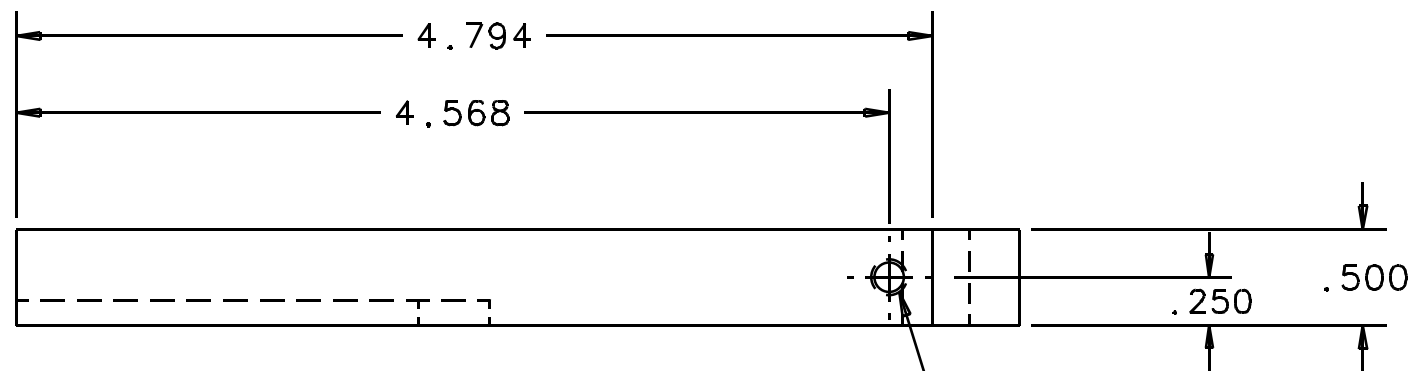


NOTES: (UNLESS OTHERWISE SPECIFIED)

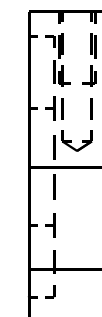
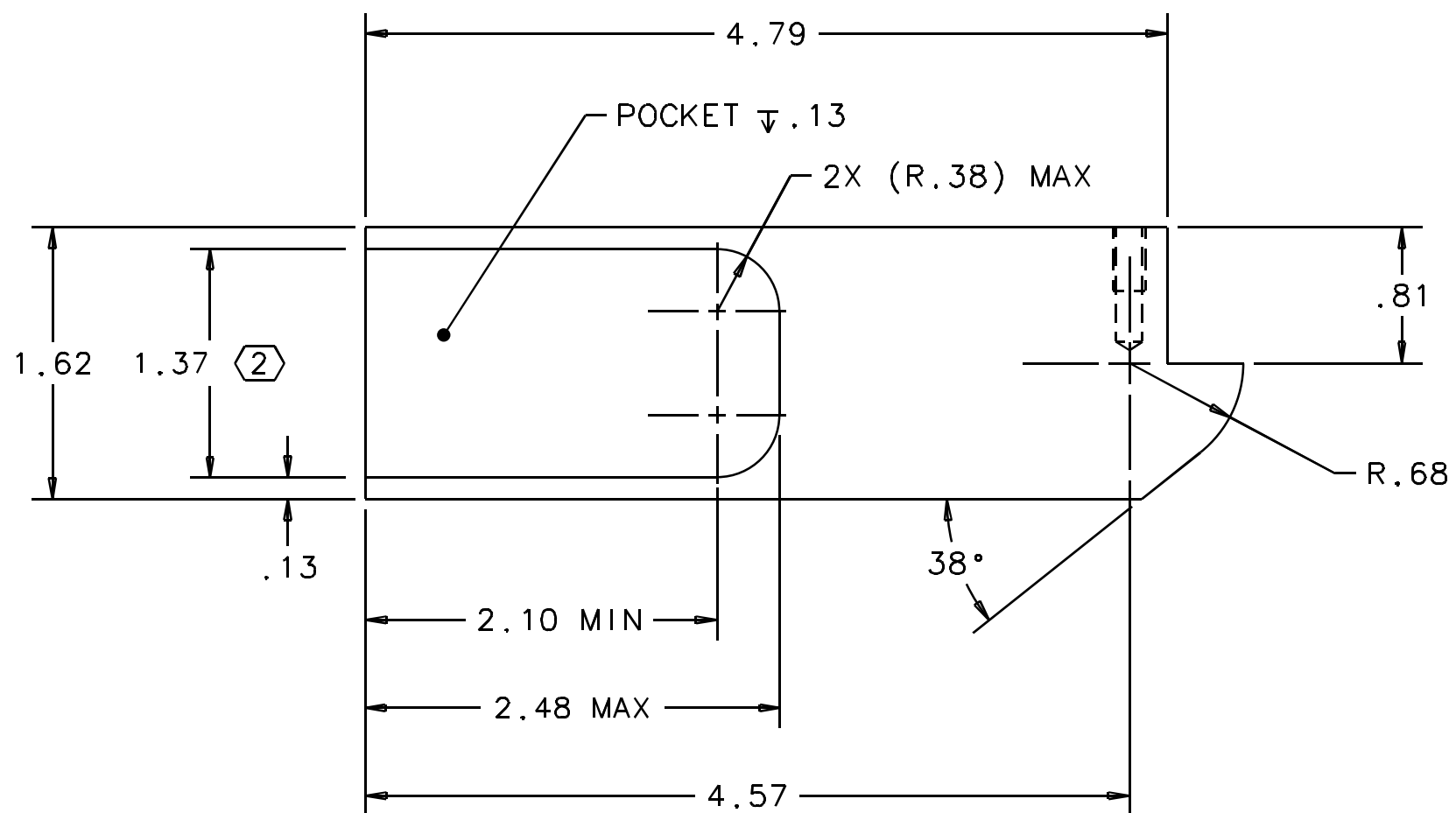
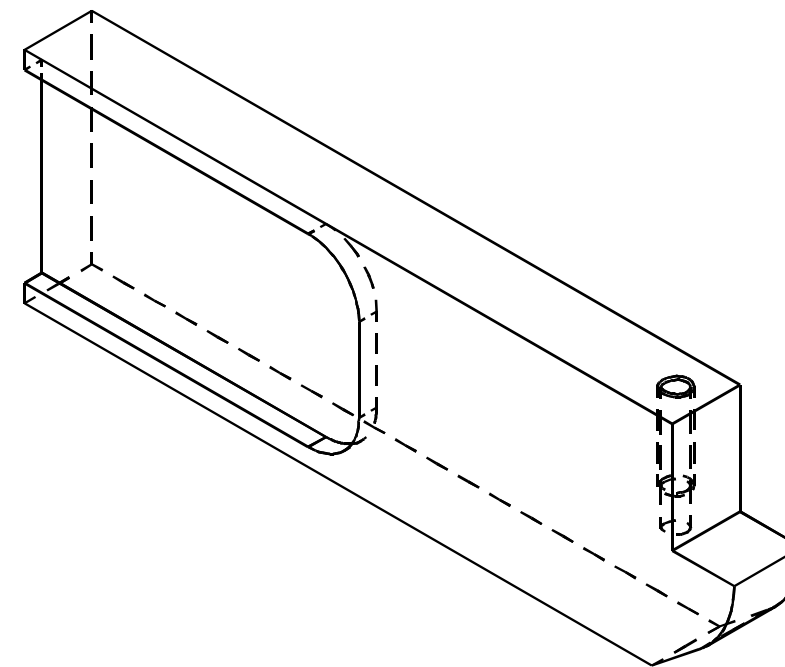
1. BREAK ALL SHARP EDGES.

2. CHAMFER INSIDE POCKET AS REQUIRED FOR WELDING ON NEXT ASSEMBLY.

REV	DATE	DRAWN BY	CHECKED	DCC	DCN/DESCRIPTION
A	8/28/98	C. Conley			E980218-00/INITIAL RELEASE



#10-32 UNC-2B
 \sphericalangle 82°-100° X ϕ .25±.01
 ∇ .38 MIN



QTY	REQD	FSCM NO	PART OR IDENTIFYING NO	PART	NOMENCLATURE OR DISCRPTION	304 STAINLESS STEEL	MATERIAL SPECIFICATION	ITEM NO
PARTS LIST								
DRWN	C. Conley	DATE	8/28/98	CALIFORNIA INSTITUTE OF TECHNOLOGY MASSACHUSETTS INSTITUTE OF TECHNOLOGY LIGO PROJECT				
CHKD				1-Deas CAD file: D970559_A.dwg dcc file: D970559-A.pdf				
ENGR				TITLE				
APPD				LOS3 SENSOR/ACTUATOR BRACKET, REAR				
UNLESS OTHERWISE SPECIFIED:				SCALE: 1/1				
DIMENSION UNITS ARE inch (mm)				SIZE DRAWING NUMBER				
TOLERANCES ARE:				DRAWING NUMBER				
X.XXX: ± 0.005				D970559-A-D				
X.XX: ± 0.01				SHEET				
ANGLES: ± 0.5°				1 OF 1				
NEXT ASSEMBLY: D970508								