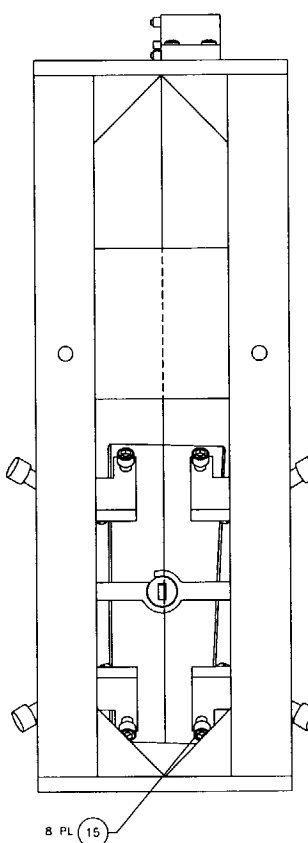
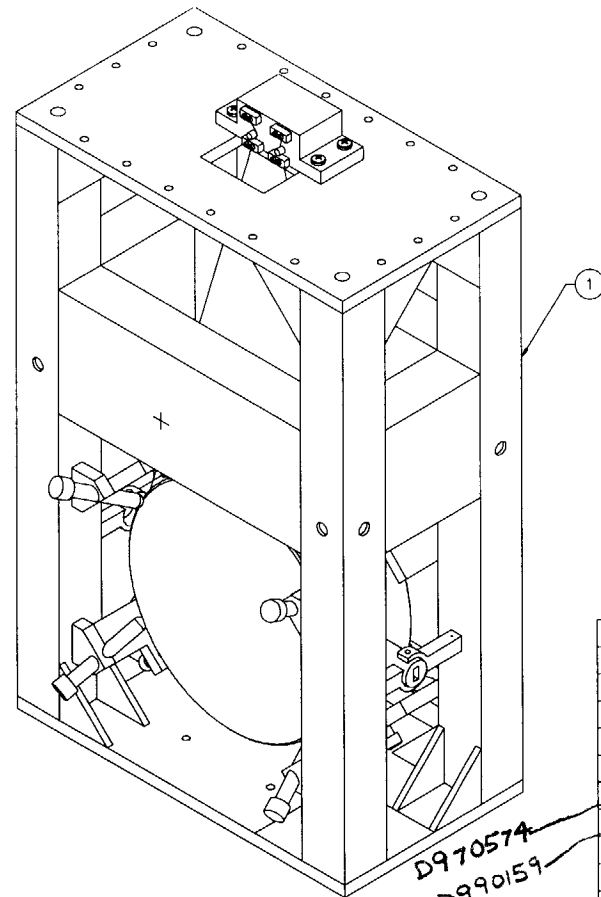
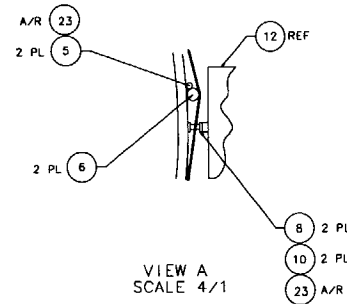
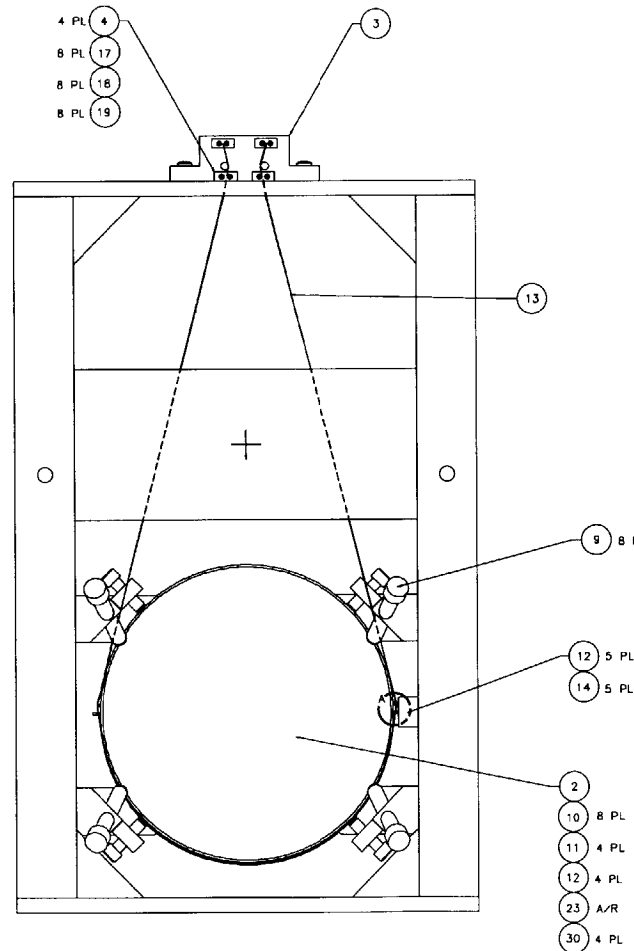
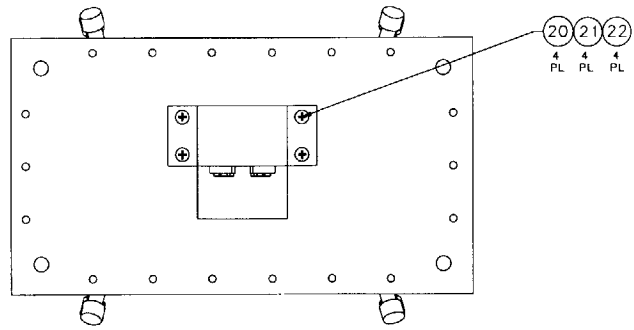


NOTES: (UNLESS OTHERWISE SPECIFIED)
 1. SPECIFICATIONS FOR THE CONSTRUCTION OF THIS ASSEMBLY ARE COVERED IN THE LARGE OPTIC SUSPENSION BALANCING SPECIFICATION, LIGO E970154.
 MATERIAL: CONDUCTIVE TEFLON, MANUF. BY FURON DIXON, 386 METACOM AVE., BRISTOL, RI, 02809, (401)253-2000, AND DESIGNATED BY THE NAME FURON DIXON COMPOUND 1042.
 HEIGHT ADAPTER IS NOT SHOWN FOR CLARITY. IT IS BOLTED TO THE TOP OF THE LOS STRUCTURE ASSEMBLY USING THE HARDWARE ITEM NOS. 25-28. INSTRUCTIONS INCLUDED IN LIGO E970154.



D990187 SIDE BLOCKS - ITM 4K

QTY	PART NO.	DESCRIPTION	MATERIAL	UNIT
	D970180	WINCH FIXTURE		41
				40
	D970074	FIXTURE, MAGNET-TO-DUMBLE STANDOFF		39
				38
	D960752	FIXTURE, OPTICAL LEVELER		37
	D960753	FIXTURE, WIRE AND OPTICS		36
	D970564	FIXTURE, GUIDE ROD, 1TM, 4K		35
	D960050	FIXTURE, MAGNET/STANDOFF		34
	D970169	MAGNET STRENGTH FIXTURE		33
	D970616	COIL STRENGTH FIXTURE		32
				31
	D970615	PAM SCREW		30
				29
18		1/4-20 x 1.5 LG SHCS	STAINLESS, Ag PLTD	28
18		1/4-20 LOCK WASHER	STAINLESS, Ag PLTD	27
18		1/4-20 FLAT WASHER	STAINLESS, Ag PLTD	26
1	D960145	HEIGHT ADAPTER	STAINLESS, Ag PLTD	25
				24
A/R		EPOXY, VAC-SEAL		23
4	COMMERCIAL EQUIV NAS52041BL	WASHER, FLAT, 1/4	STAINLESS	22
4	COMMERCIAL EQUIV MS35338-139	WASHER, SPLIT LOCK, 1/4	STAINLESS	21
4	U-C COMPONENTS P/N C-2018-NA	SCREW, SHCS, 1/4-20 x 1.00	STAINLESS, Ag PLTD	20
8	COMMERCIAL EQUIV NAS52041	WASHER, FLAT, 1/4	STAINLESS	19
8	COMMERCIAL EQUIV MS35338-135	WASHER, SPLIT LOCK, 1/4	STAINLESS	18
8	U-C COMPONENTS P/N C-512-NA	SCREW, SHCS, 4-40 x 5/16	STAINLESS, Ag PLTD	17
				16
8	D990690	SCREW, HEX HEAD, 3/8-16 x 1.50		15
6	U-C COMPONENTS P/N T-1003-NA	SET SCREW, SOCKET, 10-32 x .188	STAINLESS, Ag PLTD	14
A/R		WIRE, #.0120/- .0003"	MUSIC WIRE	13
5	D960138	SENSOR/ACTUATOR HEAD ASSEMBLY		12
4	D970075	DUMBLE STANDOFF		11
10	D960501	MAGNET		10
8	D960499	LOS CHAMFER STOP		9
2	D960149	LOS SIDE STANDOFF		8
				7
2	D960755	LOS LARGE WIRE STANDOFF		6
1	D960146	LOS GUIDE ROD		5
4	D960134	LOS CLAMP, SUSPENSION BLOCK		4
1	D960144	LOS SUSPENSION BLOCK		3
1	COATING SPEC E980067	OPTIC, Ø25cm x 10cm THICK	INPUT TEST MASS, 4K	2
1	D960133	LOS STRUCTURE ASSEMBLY		1

APPROVALS	DATE	FILE
J. Hozel	5/96	LARGE OPTIC SUSPENSION ASSEMBLY (LOS1b) FOR INPUT TEST MASS, 4K (1TM, 4K)
		D970560

SCALE 1/2" = 1"

REDLINE 8