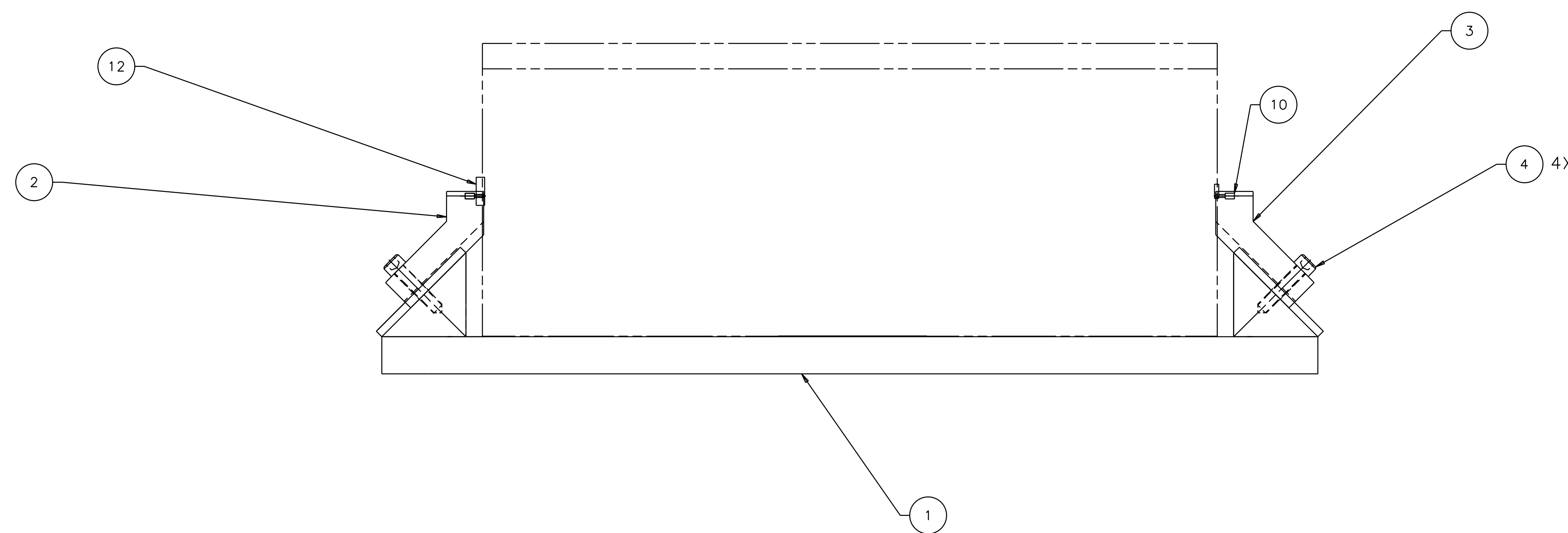
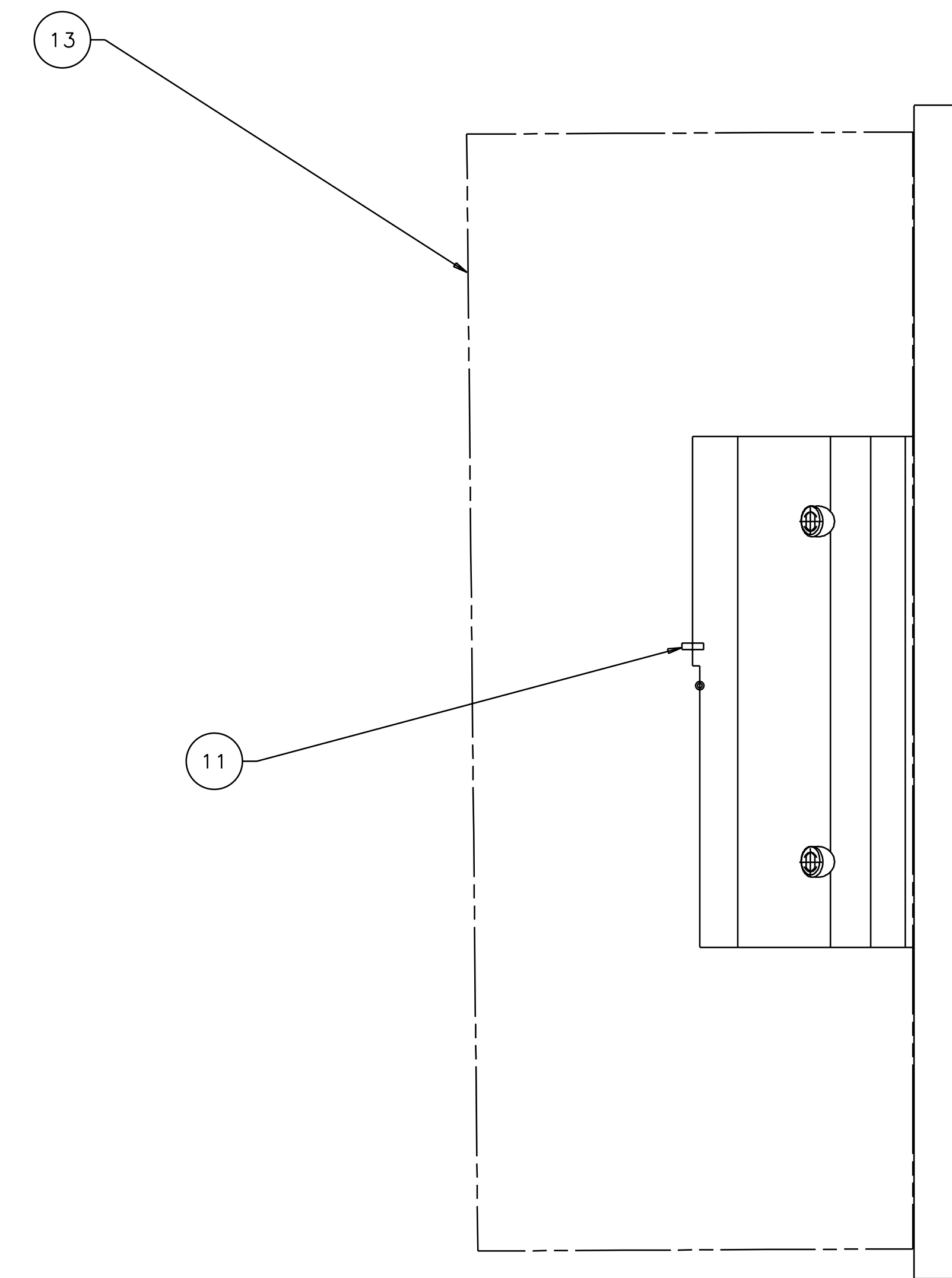
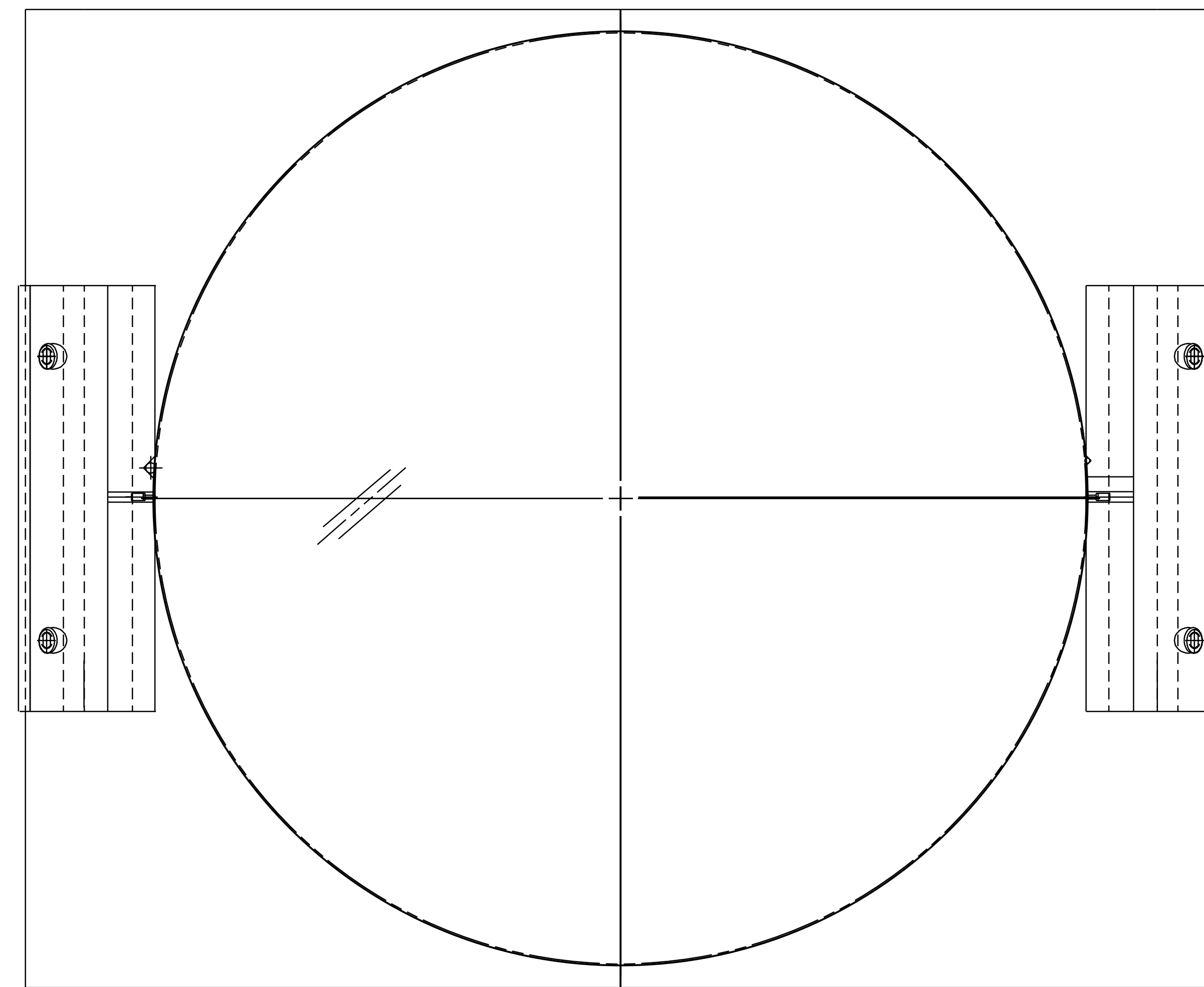


1 2 3 4 5 6 7 8

REV	DATE	DRAWN BY	CHECKED	DC	DCN/DESCRIPTION
A	8/14/98	J. Romie			E980220/INITIAL RELEASE

- NOTES: (UNLESS OTHERWISE SPECIFIED)
1. THIS FIXTURE IS TO BE USED WITH AN OPTIC THAT IS $\phi 9.84"$ X $3.94"$ THICK ($\phi 25\text{cm}$ X 10cm THICK), THICK-SIDE-UP ORIENTED WEDGE. CLOSE SLIP FIT.
 2. THE RIGHT BLOCK, TOP IS USED TO MOUNT THE GUIDE ROD AND THE LEFT BLOCK, TOP IS USED TO MOUNT THE WIRE STANDOFF.
 3. USE OF THIS FIXTURE IS COVERED IN LIGO-E970154.
 4. SPECIFICATIONS COVERING THE FABRICATION OF THIS ASSEMBLY ARE DETAILED IN LIGO-E970155, THE LARGE OPTIC SUSPENSION (LOS) FIXTURES AND COMPONENTS FABRICATION SPECIFICATION.



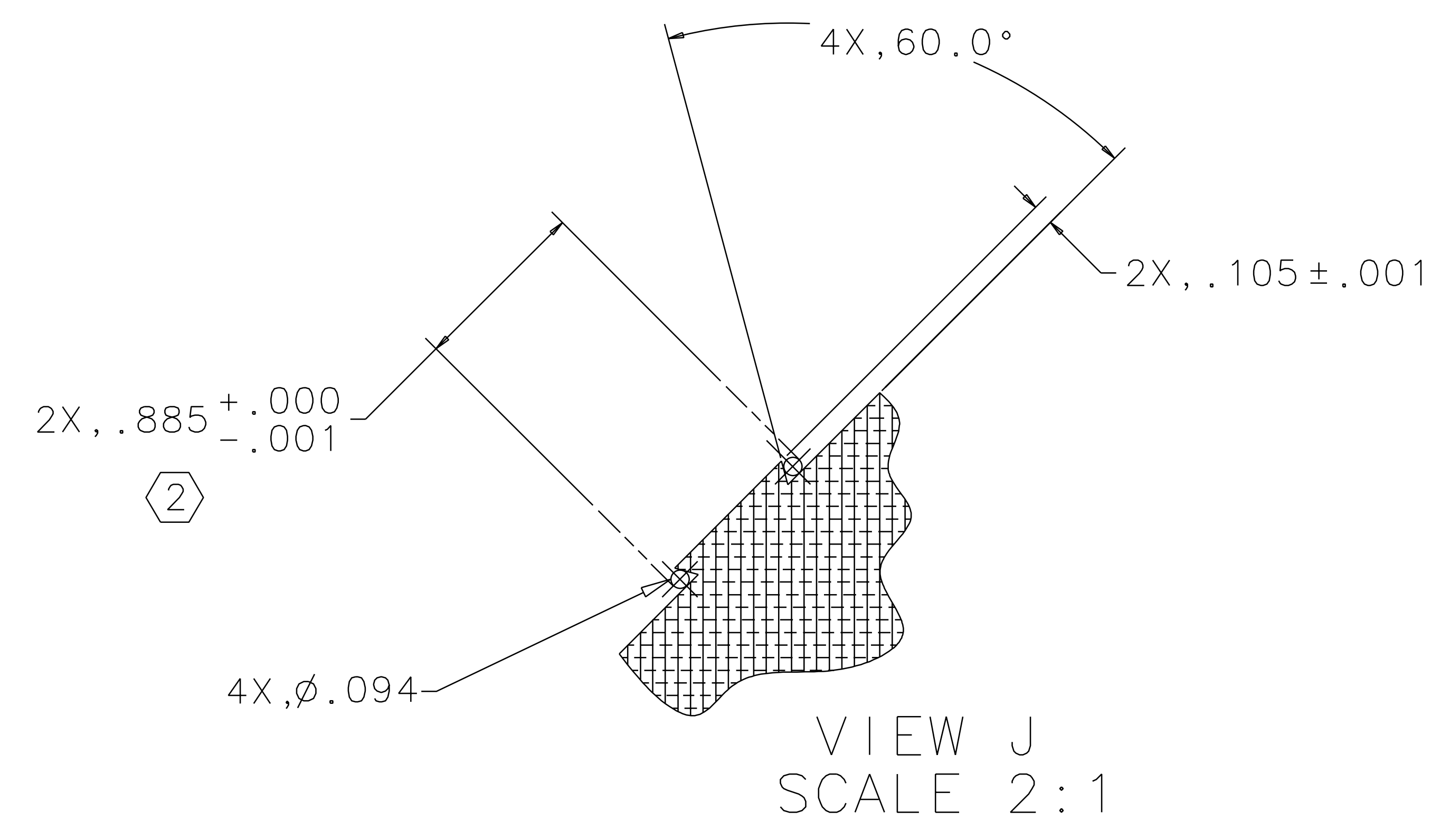
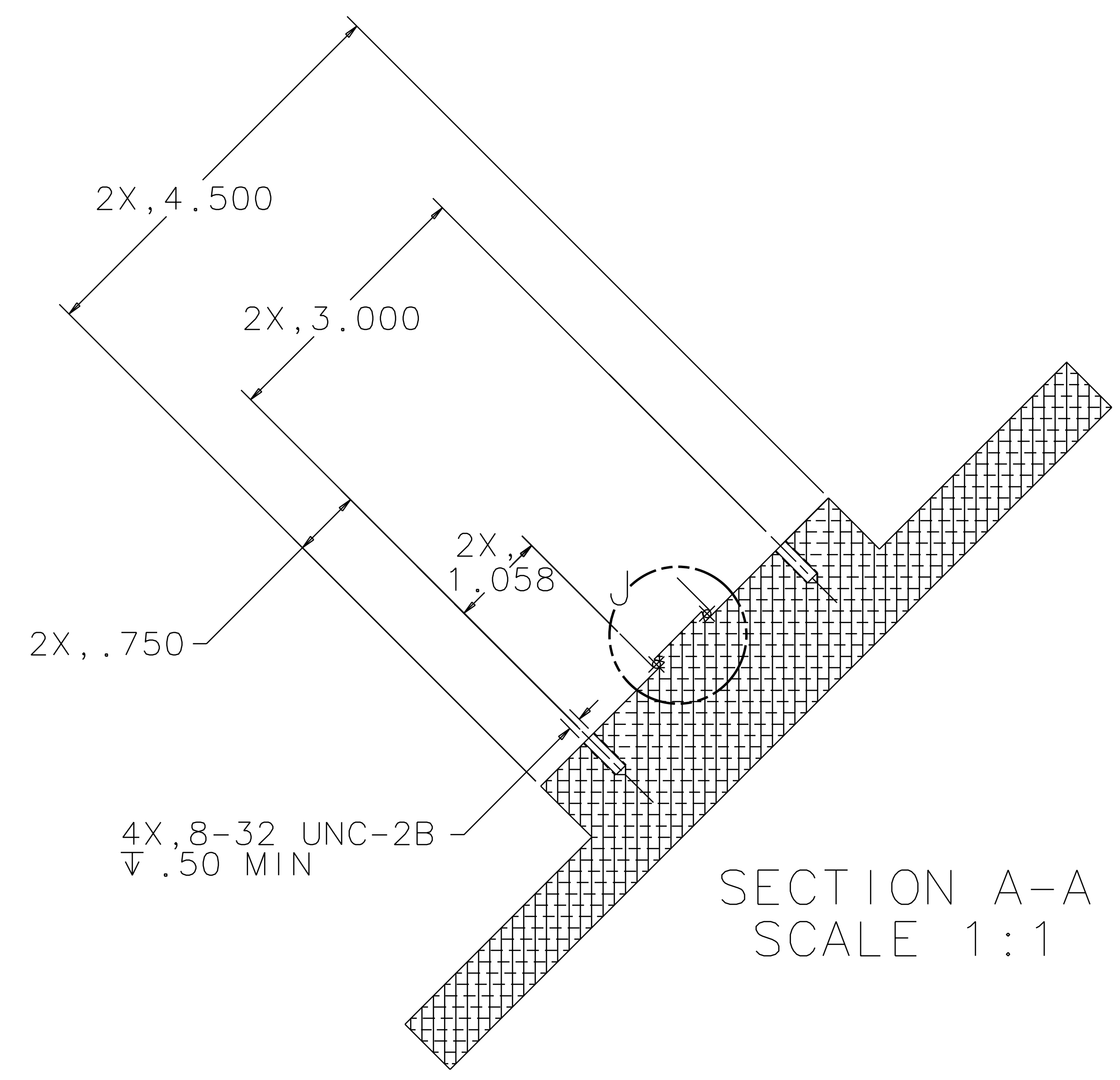
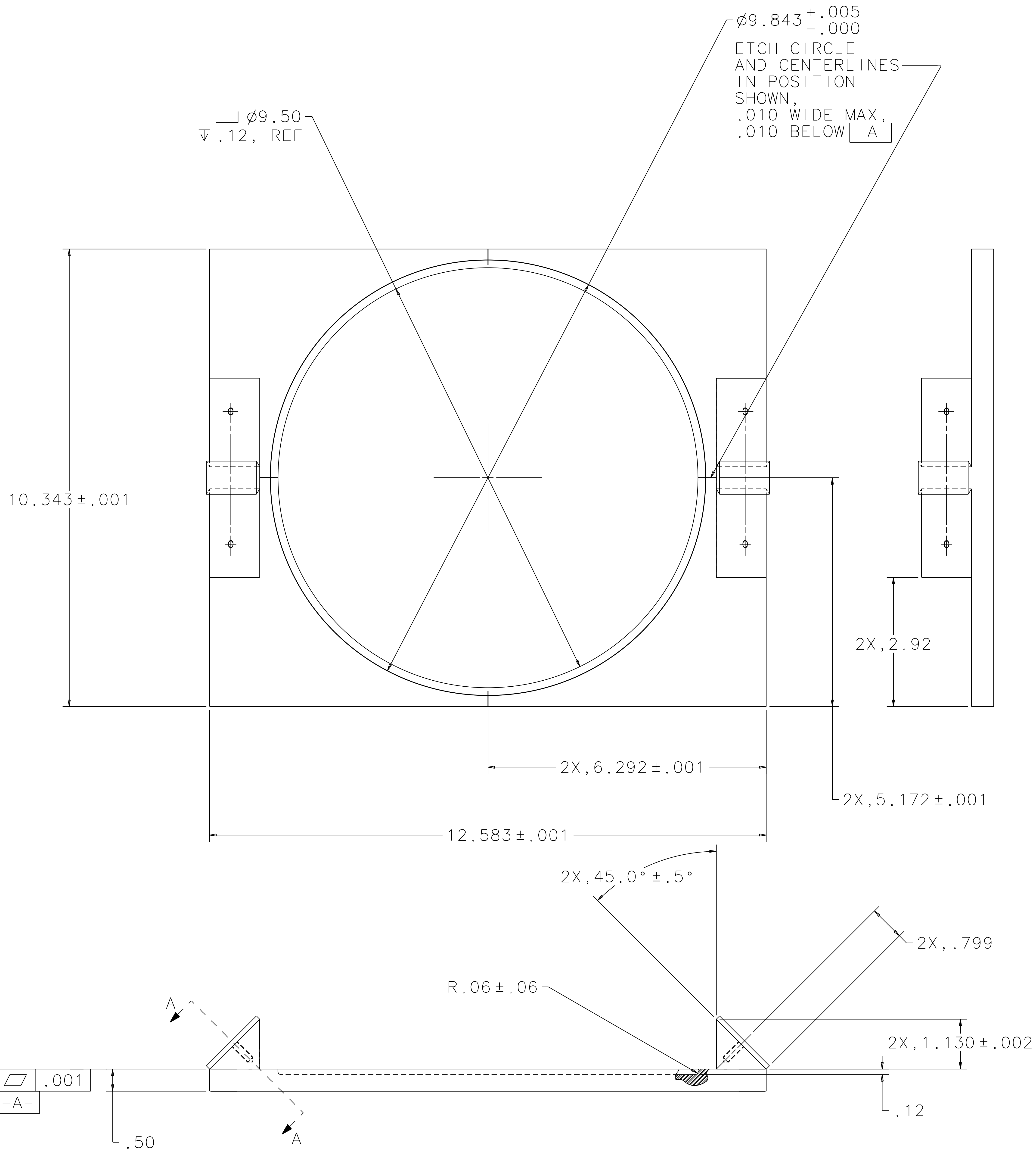
REF	DESCRIPTION	QTY	MATERIAL	ITEM NO.
13	OPTIC, ITM, 2k			
12	WIRE STANDOFF			
11	GUIDE ROD			
10	MAGNET/STANDOFF ASSEMBLY			
9				
8				
7				
6				
5				
4	SCREW, SHCS, #8-32 x .75		STAINLESS STEEL	
3	DETAIL, SHEET 3 RIGHT BLOCK, TOP			
2	DETAIL, SHEET 3 LEFT BLOCK, TOP			
1	DETAIL, SHEET 2 BASE PLATE			

UNLESS OTHERWISE SPECIFIED DIMENSIONS ARE IN INCHES TOLERANCES ARE: FRACTIONS DECIMALS ANGLES 0.XX±0.01 0.XXX±0.005 ANGLES±0.5°		APPROVALS		DATE	LIGO CALIFORNIA INSTITUTE OF TECHNOLOGY MASSACHUSETTS INSTITUTE OF TECHNOLOGY	
DO NOT SCALE DRAWING		DRAWN J. Romie		8/98	TITLE GUIDE ROD FIXTURE, ITM, 2K (LOS1d)	
NEXT ASSEMBLY D970572		MATERIAL		SIZE E	D970573	
FILE LOCATION /home/dcc/docs/D970573.pdf		FINISH		SCALE 1/1	SHEET 1 OF 3	

1 2 3 4 5 6 7 8

1 2 3 4 5 6 7 8

REV	DATE	DRAWN BY	CHECKED	DCC	DCN/DESCRIPTION
A	8-14-98	J. Romie			E980220/INITIAL RELEASE

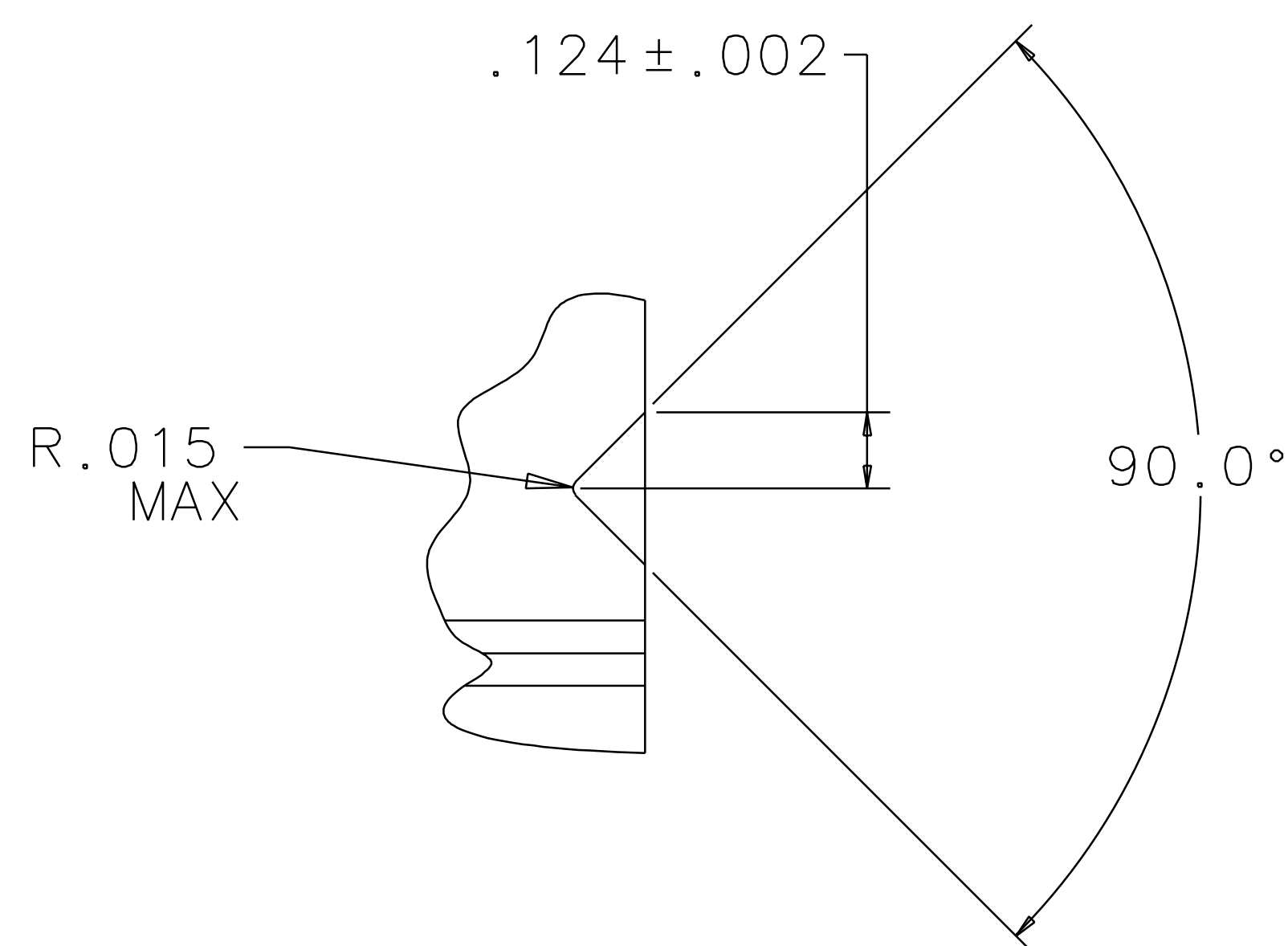


BASE PLATE
MATERIAL: 6061-T6 ALUM

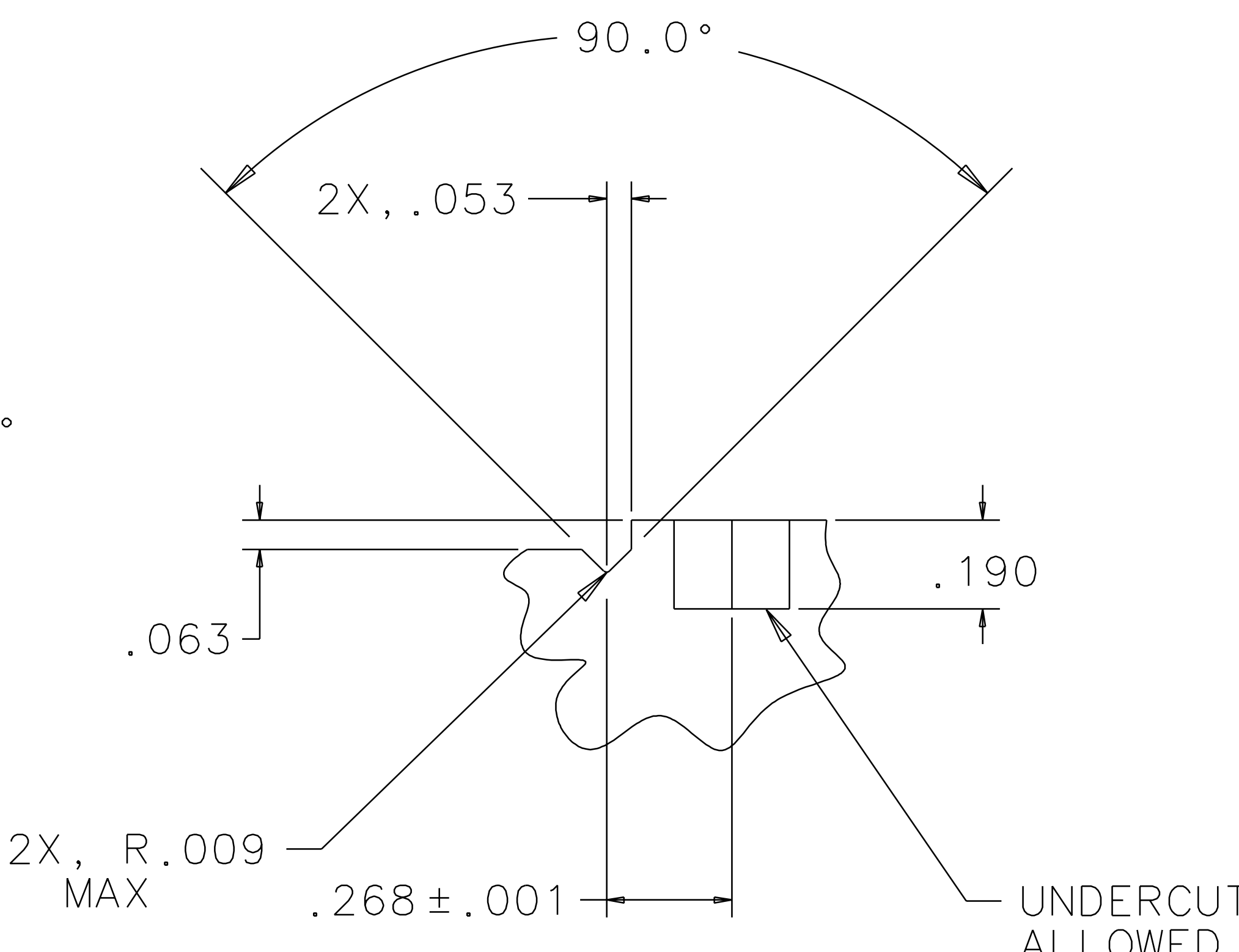
QTY REQ	PART OR IDENTIFYING NO	NOMENCLATURE OR DESCRIPTION	MATERIAL SPECIFICATION	ITEM NO.
UNLESS OTHERWISE SPECIFIED DIMENSIONS ARE IN INCHES				
TOLERANCES ARE:				
FRACTIONS	DECIMALS	ANGLES		
0.XX \pm 0.01	0.XXX \pm 0.005	ANGLES \pm 0.5 $^\circ$		
DO NOT SCALE DRAWING				
APPROVALS		DATE	LIGO CALIFORNIA INSTITUTE OF TECHNOLOGY MASSACHUSETTS INSTITUTE OF TECHNOLOGY	
DRAWN J. Romie		8/98	TITLE GUIDE ROD FIXTURE ITM, 2k (LOS1d)	
CHECKED			SIZE E D970573	
MATERIAL			SCALE 1/1	
FINISH			SHEET 2 OF 3	

1 2 3 4 5 6 7 8

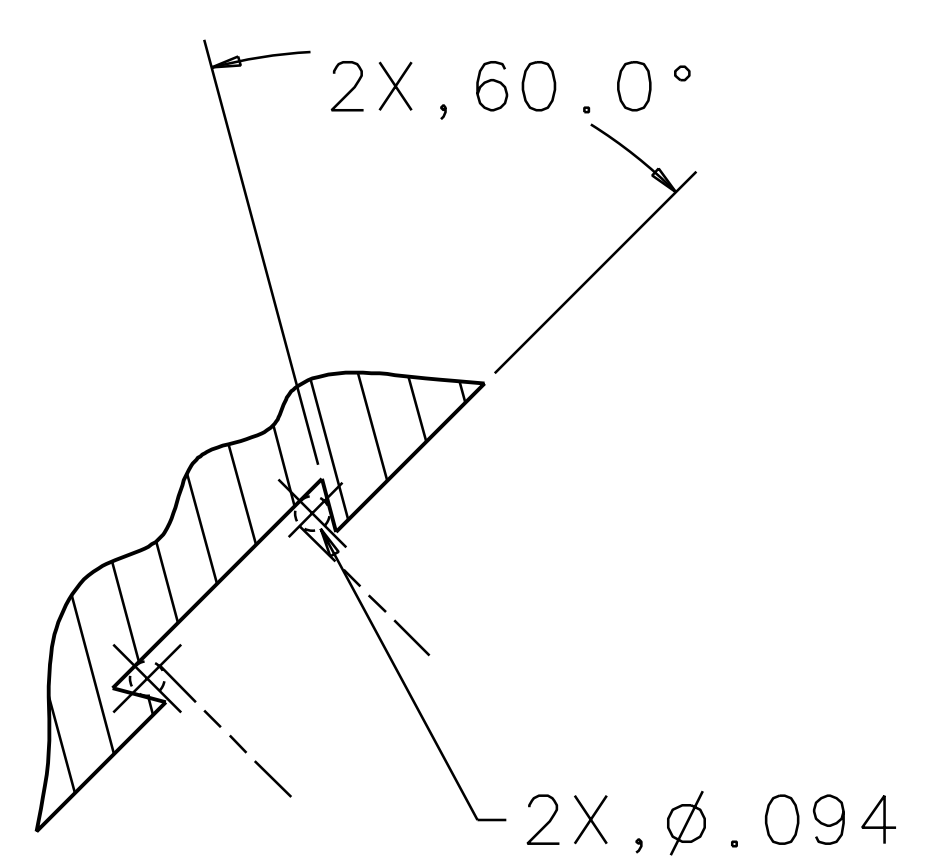
REV	DATE	DRAWN BY	CHECKED	DCC	DCN/DESCRIPTION
A	8-14-98	J. Romie			E980220/INITIAL RELEASE



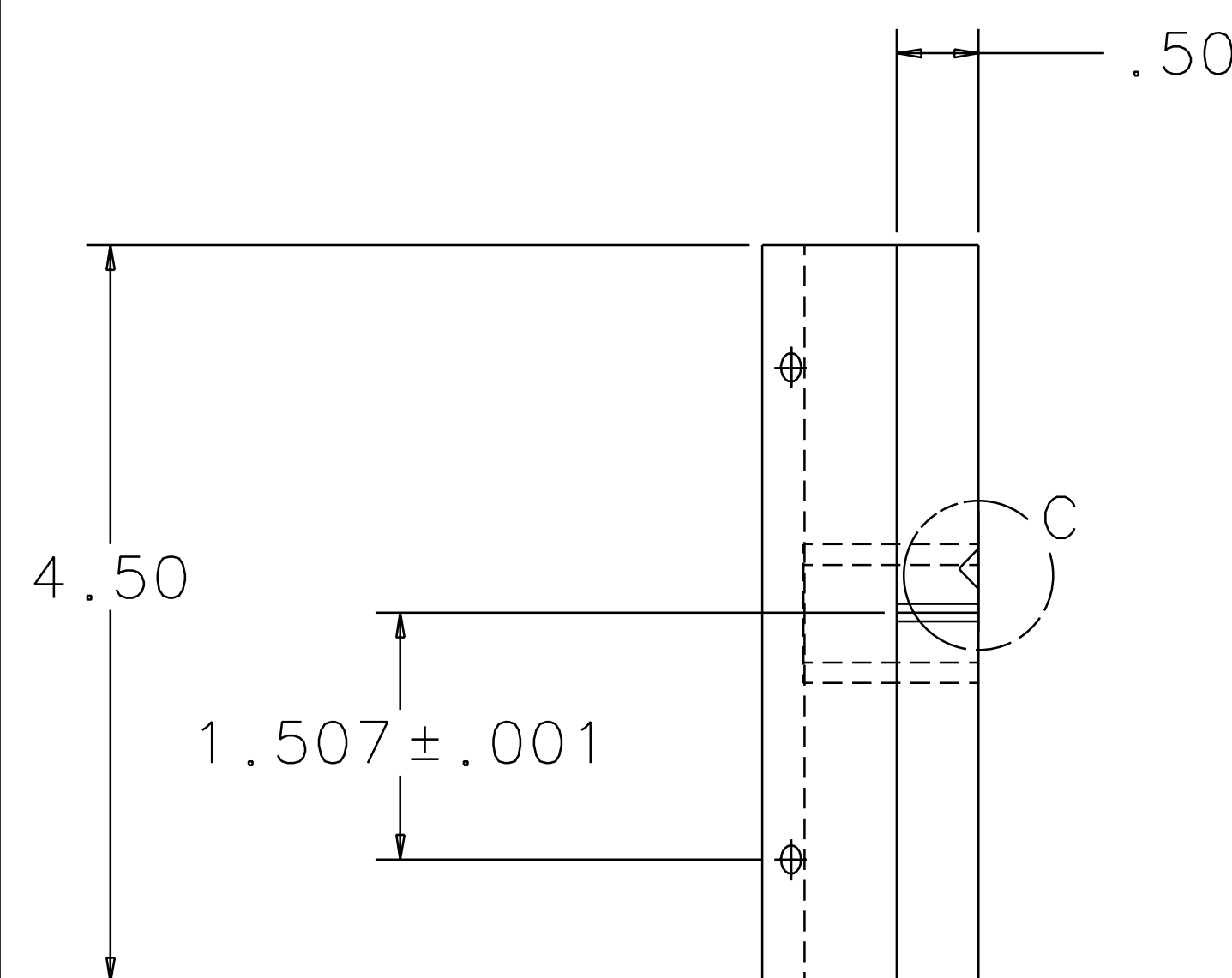
VIEW C
SCALE 4:1



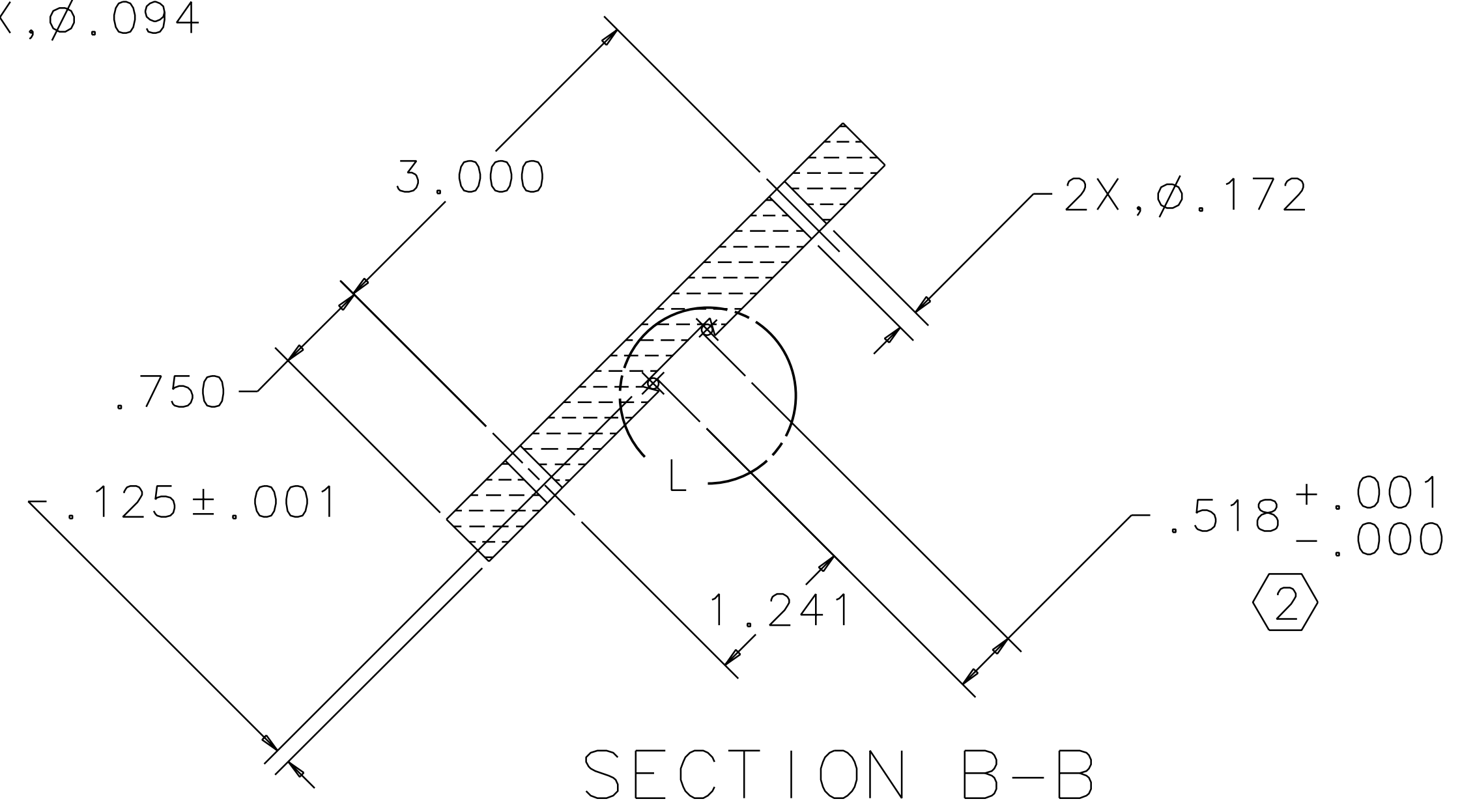
VIEW D
SCALE 4:1



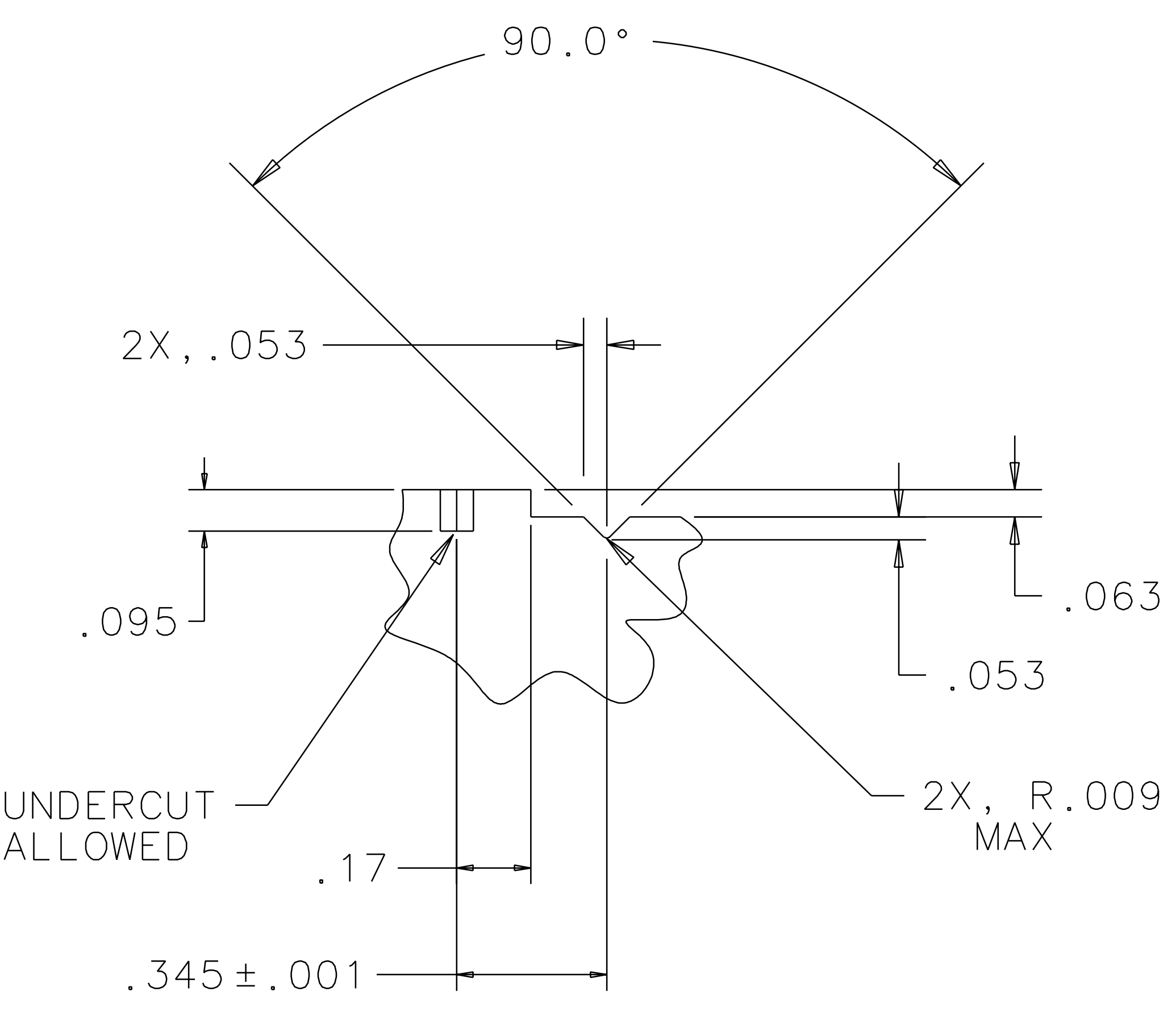
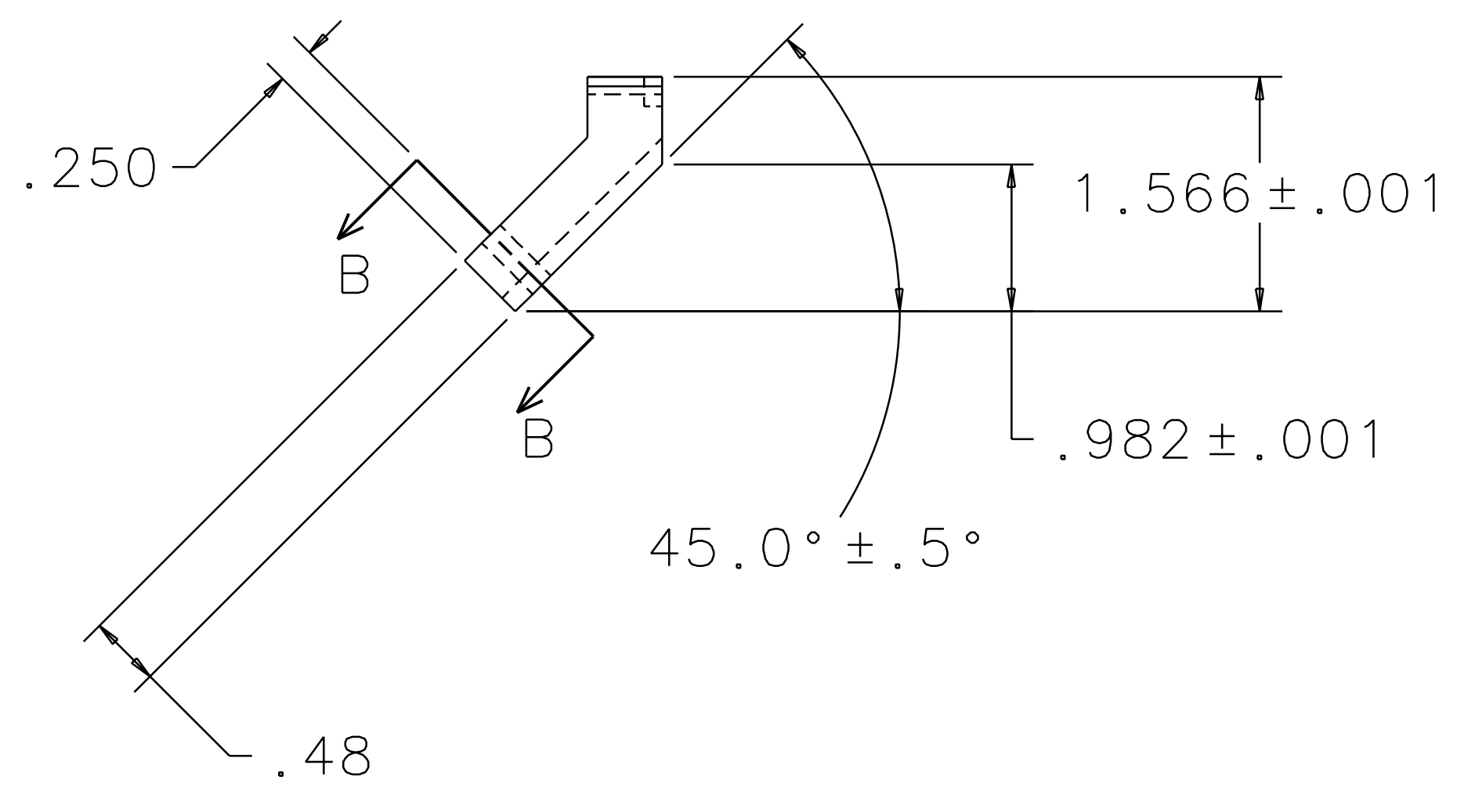
VIEW L
SCALE 2:1



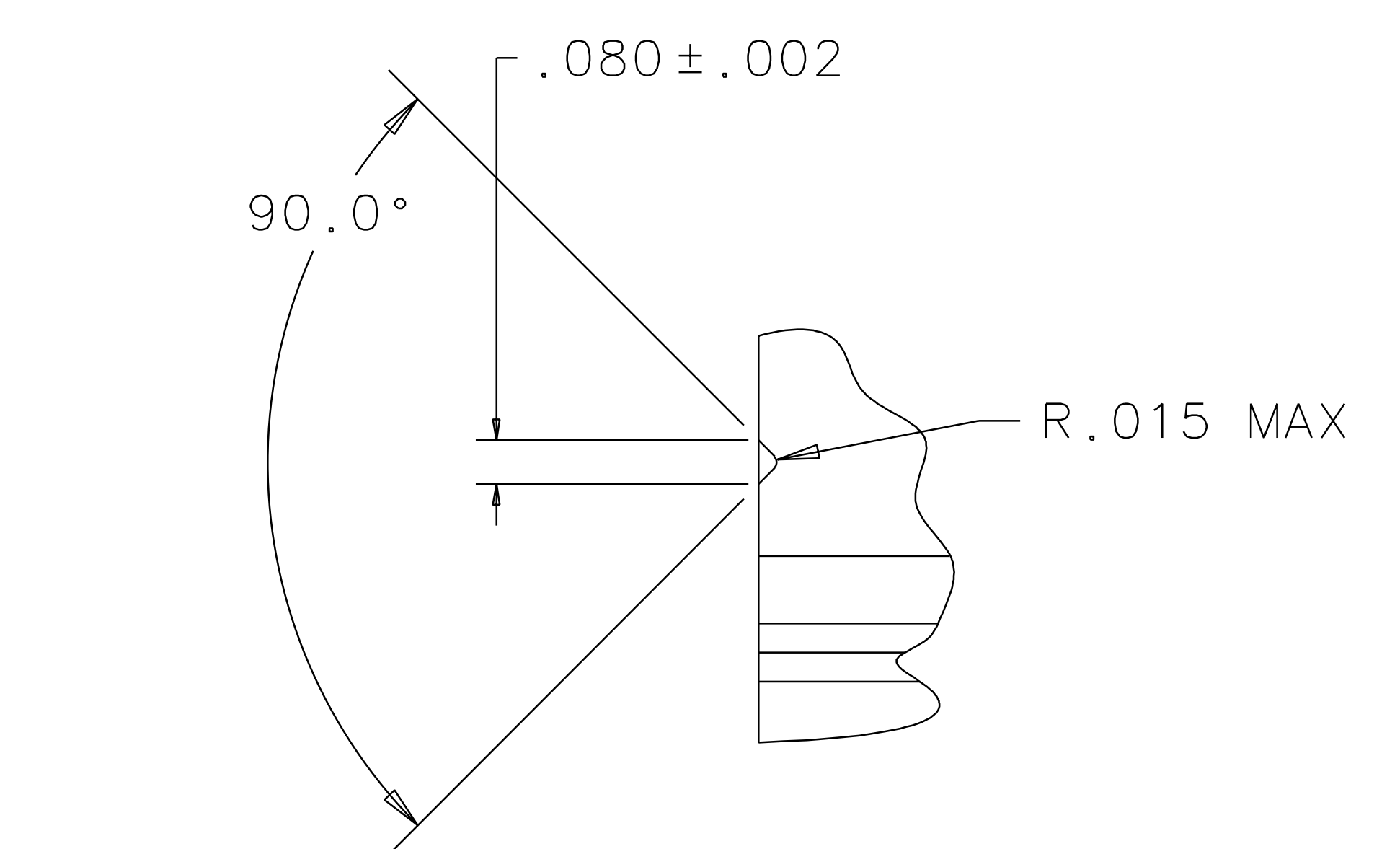
LEFT BLOCK, TOP
MATERIAL: TEFLON



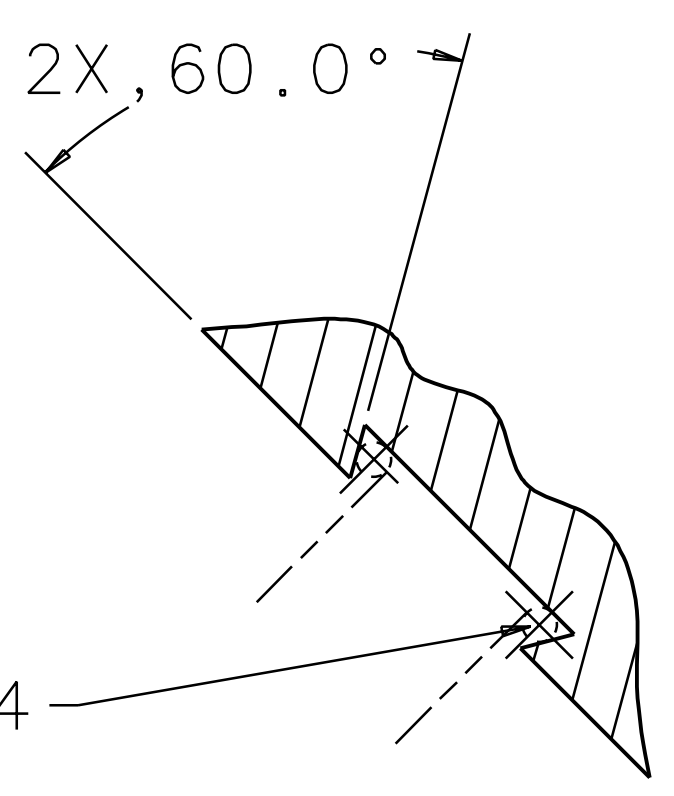
SECTION B-B



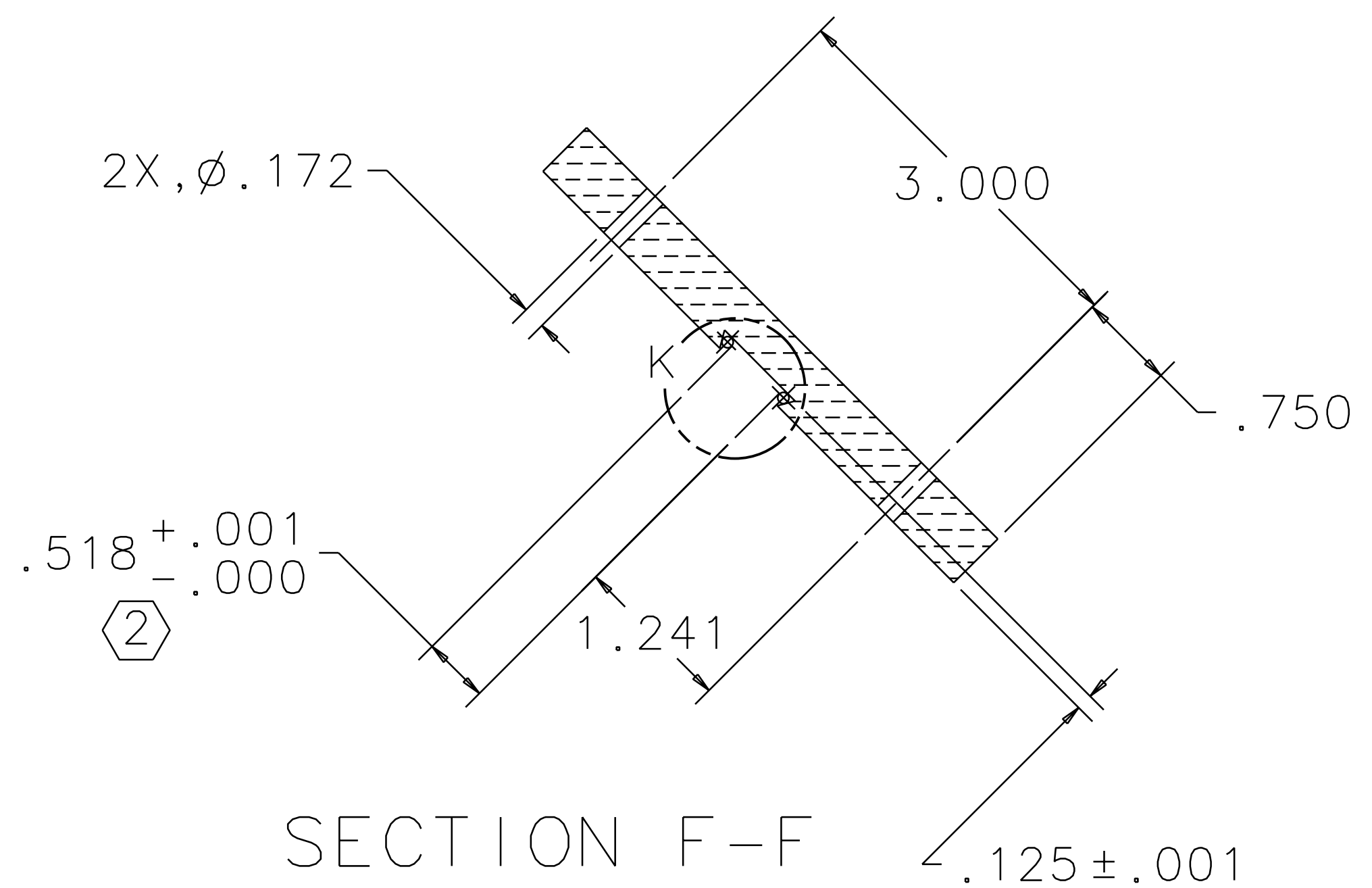
VIEW H
SCALE 4:1



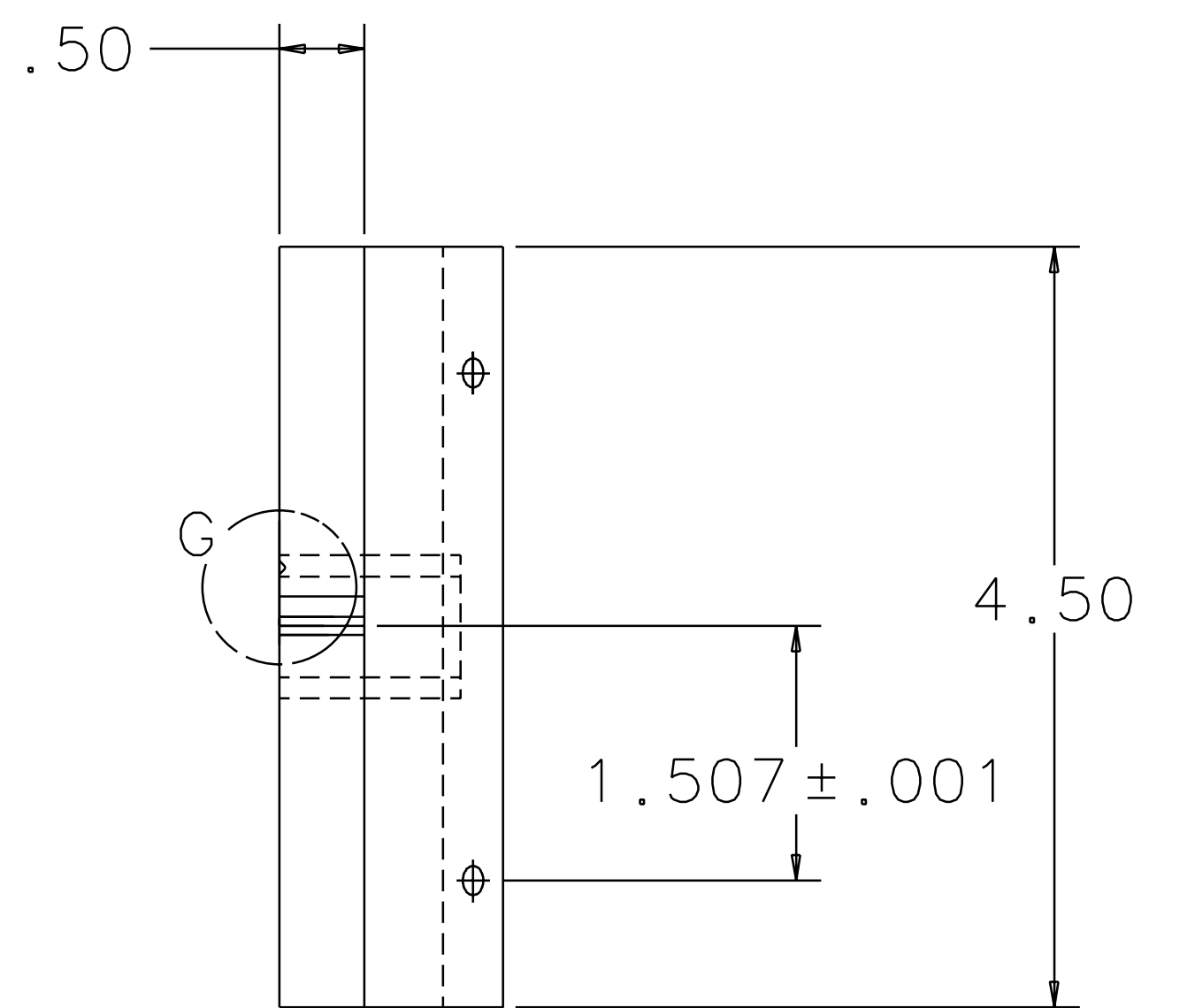
VIEW G
SCALE 4:1



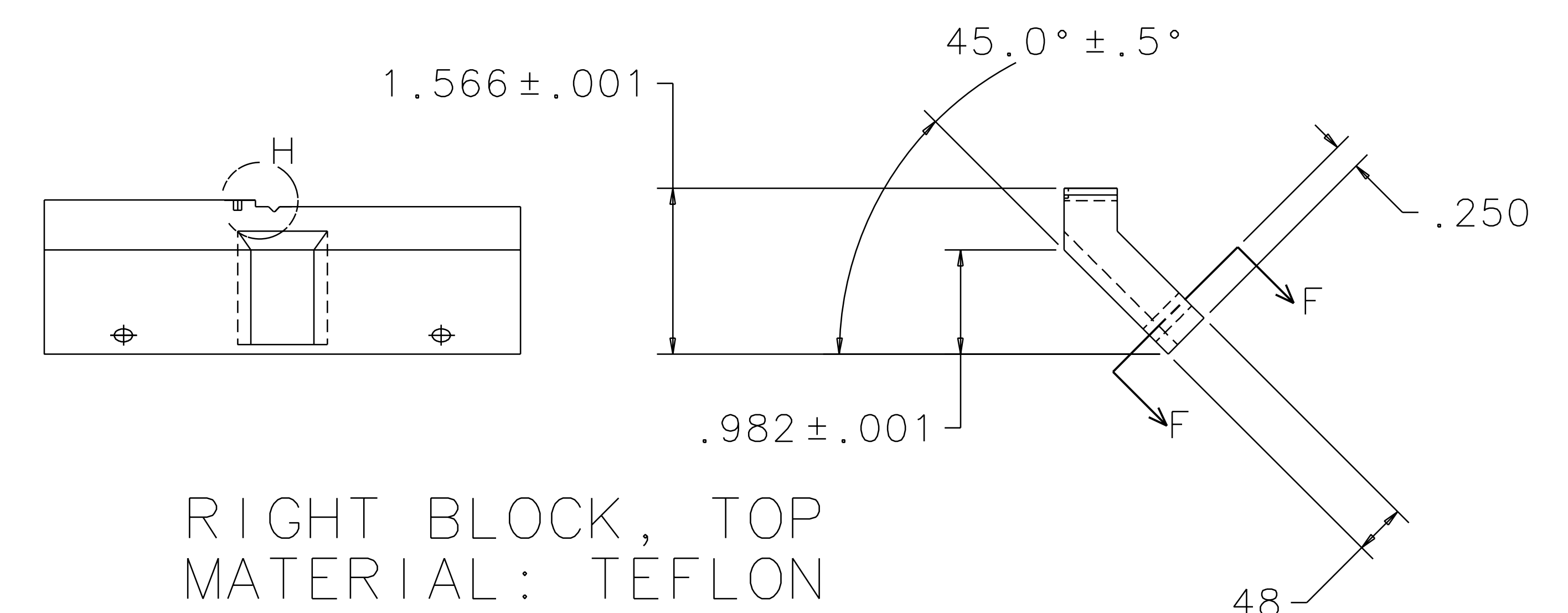
VIEW K
SCALE 2:1



SECTION F-F



RIGHT BLOCK, TOP
MATERIAL: TEFLON



QTY REQD	PART OR IDENTIFYING NO	NOMENCLATURE OR DESCRIPTION	MATERIAL SPECIFICATION	ITEM NO.
UNLESS OTHERWISE SPECIFIED DIMENSIONS ARE IN INCHES				
TOLERANCES ARE:				
FRACTIONS DECIMALS ANGLES				
0. XX ± 0.01				
0. XXX ± 0.005				
ANGLES ± 0.5°				
DO NOT SCALE DRAWING				
APPROVALS		DATE	TITLE	
DRAWN J. Romie		8/98	LIGO CALIFORNIA INSTITUTE OF TECHNOLOGY	
CHECKED			MASSACHUSETTS INSTITUTE OF TECHNOLOGY	
MATERIAL			GUIDE ROD FIXTURE	
FINISH			ITM, 2k (LOS1d)	
NEXT ASSEMBLY			SIZE	REV
FILE LOCATION			E	A
			SCALE	3 OF 3
			1/1	