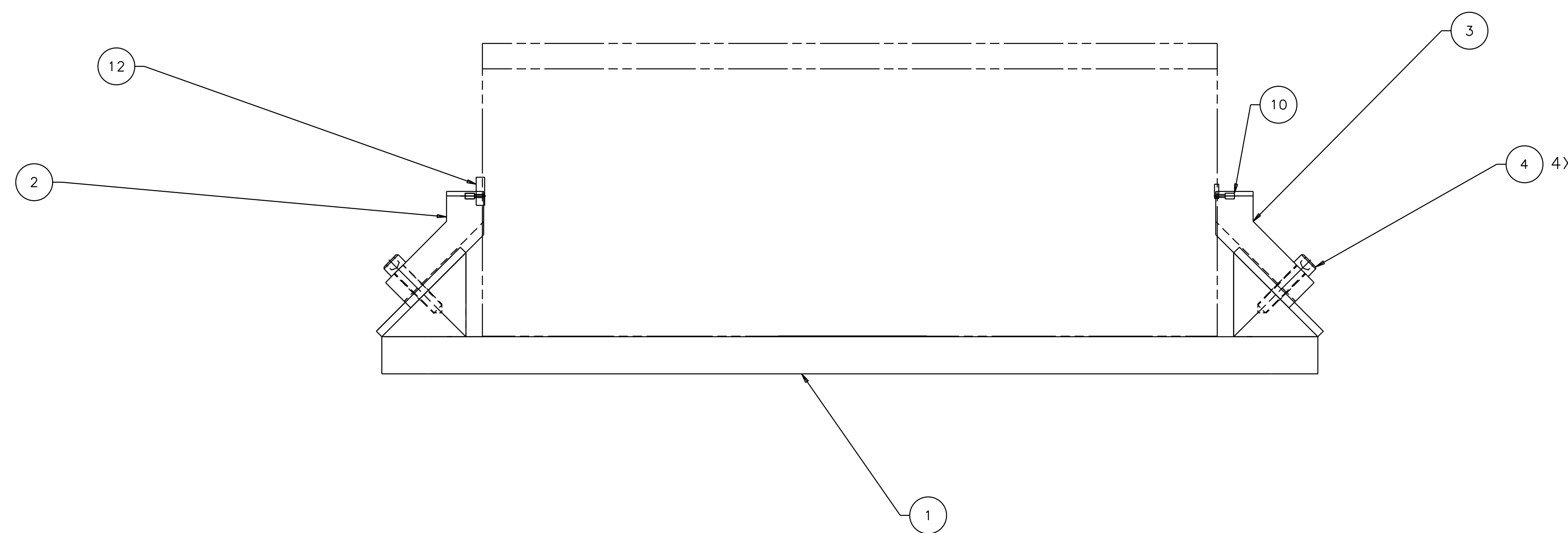
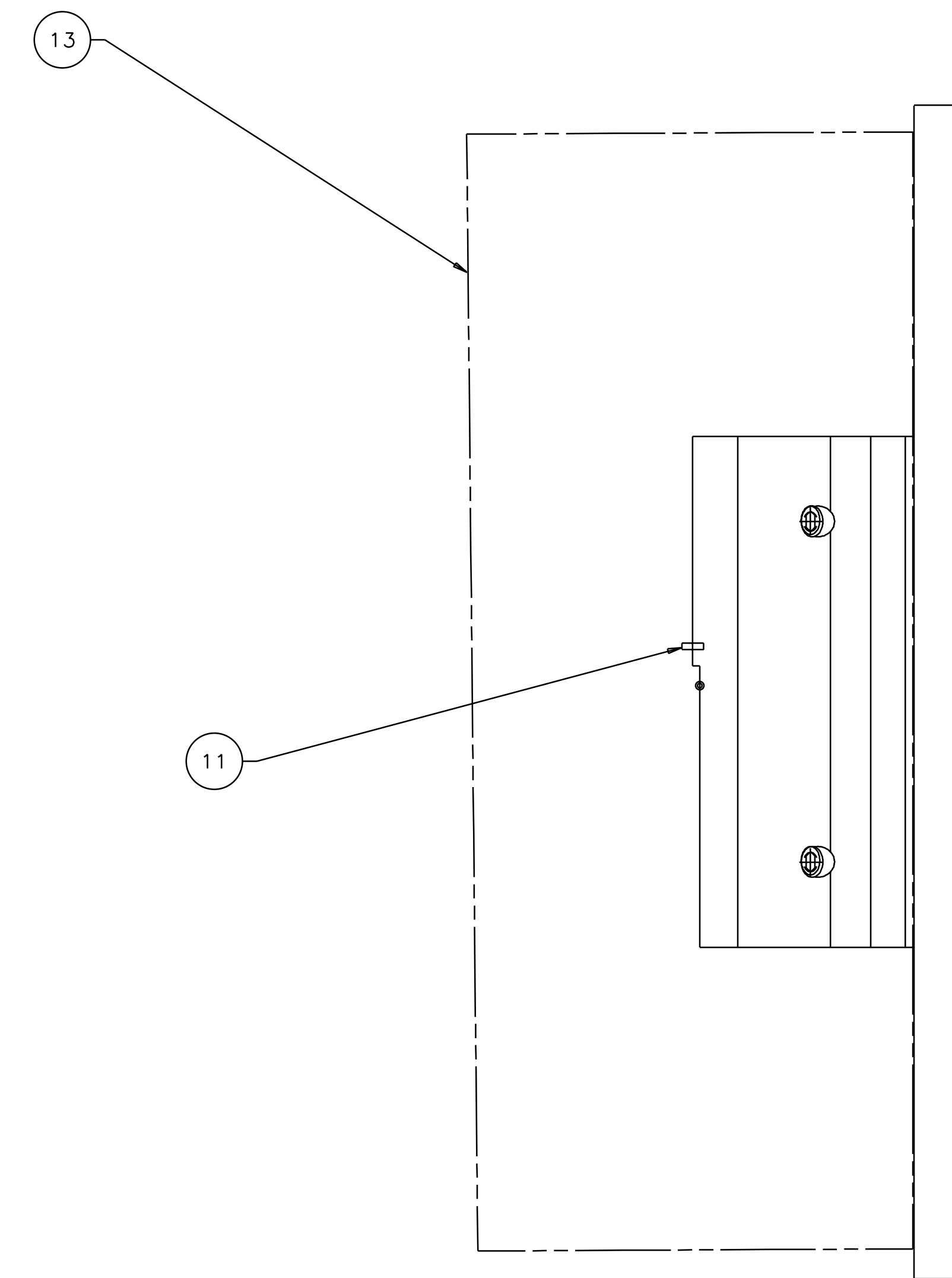
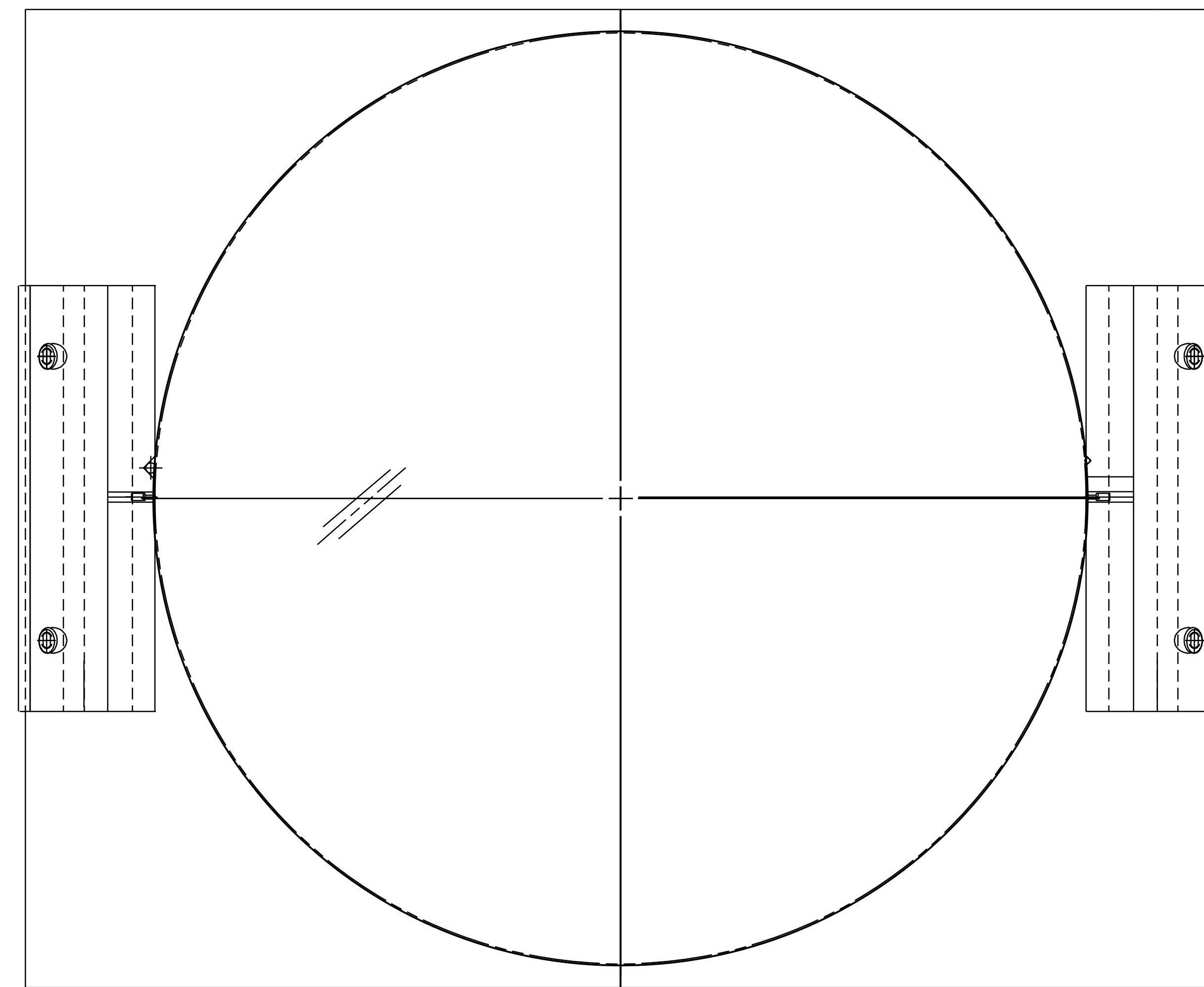


1 2 3 4 5 6 7 8

REV	DATE	DRAWN BY	CHECKED	DC	DCN/DESCRIPTION
A	8/14/98	J. Romie			E980220/INITIAL RELEASE
B	9/10/98	J. Romie			E980246/DOVE TAIL CHANGE

- NOTES: (UNLESS OTHERWISE SPECIFIED)
- THIS FIXTURE IS TO BE USED WITH AN OPTIC THAT IS $\phi 9.84"$ X $3.94"$ THICK ($\phi 25\text{cm}$ x 10cm THICK), THICK-SIDE-UP ORIENTED WEDGE. CLOSE SLIP FIT.
 - THE RIGHT BLOCK, TOP IS USED TO MOUNT THE GUIDE ROD AND THE LEFT BLOCK, TOP IS USED TO MOUNT THE WIRE STANDOFF.
 - USE OF THIS FIXTURE IS COVERED IN LIGO-E970154.
 - SPECIFICATIONS COVERING THE FABRICATION OF THIS ASSEMBLY ARE DETAILED IN LIGO-E970155, THE LARGE OPTIC SUSPENSION (LOS) FIXTURES AND COMPONENTS FABRICATION SPECIFICATION.



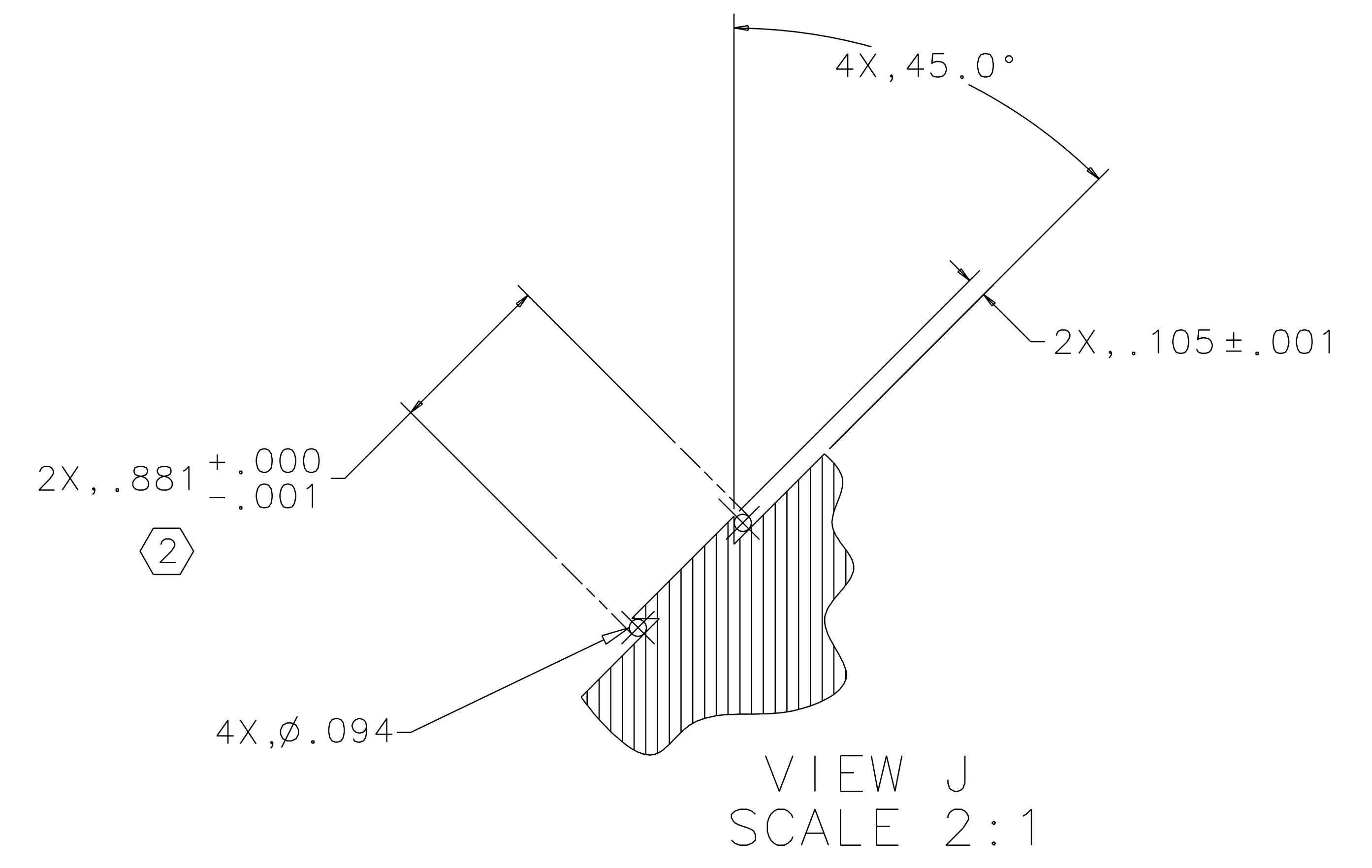
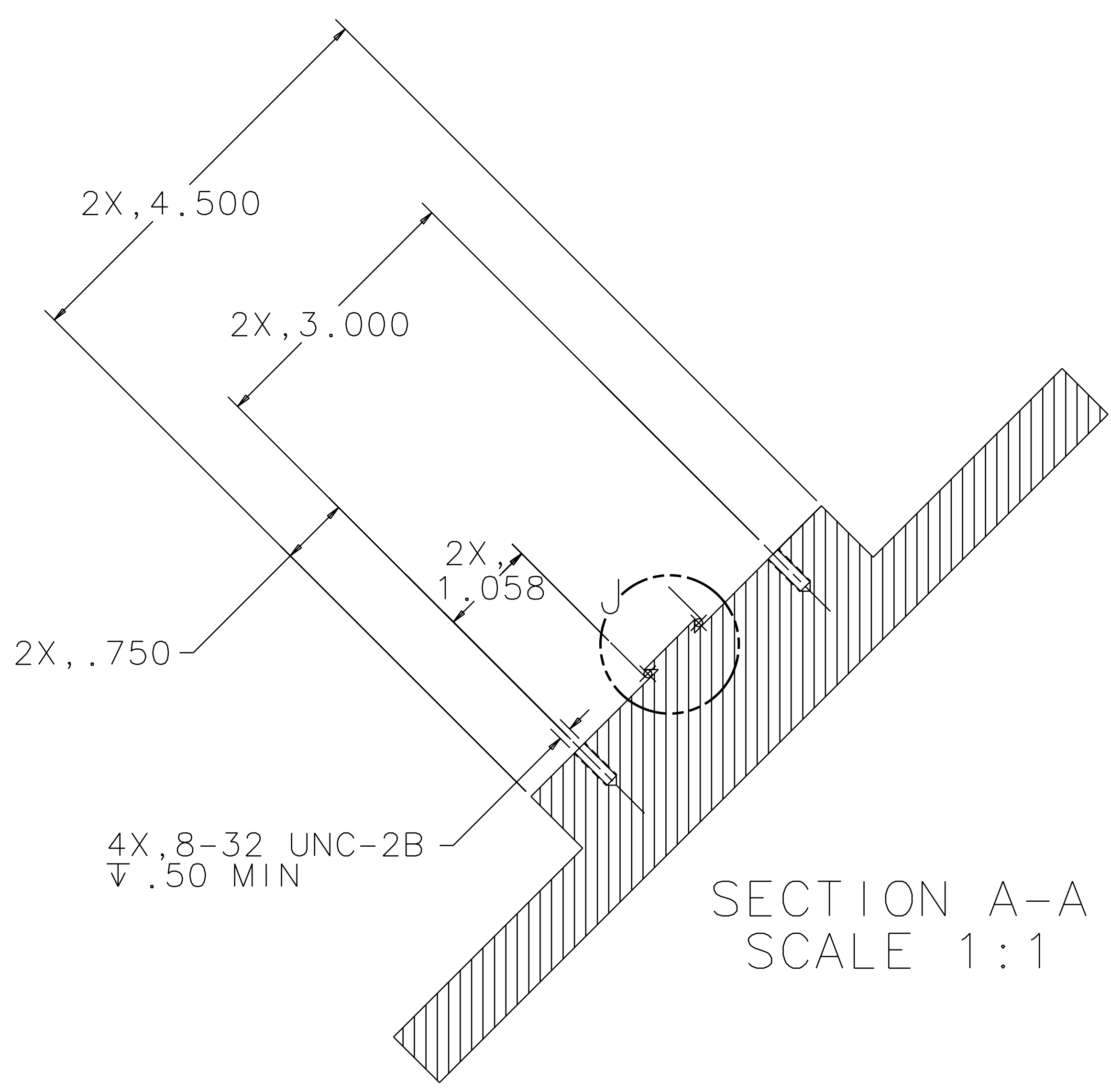
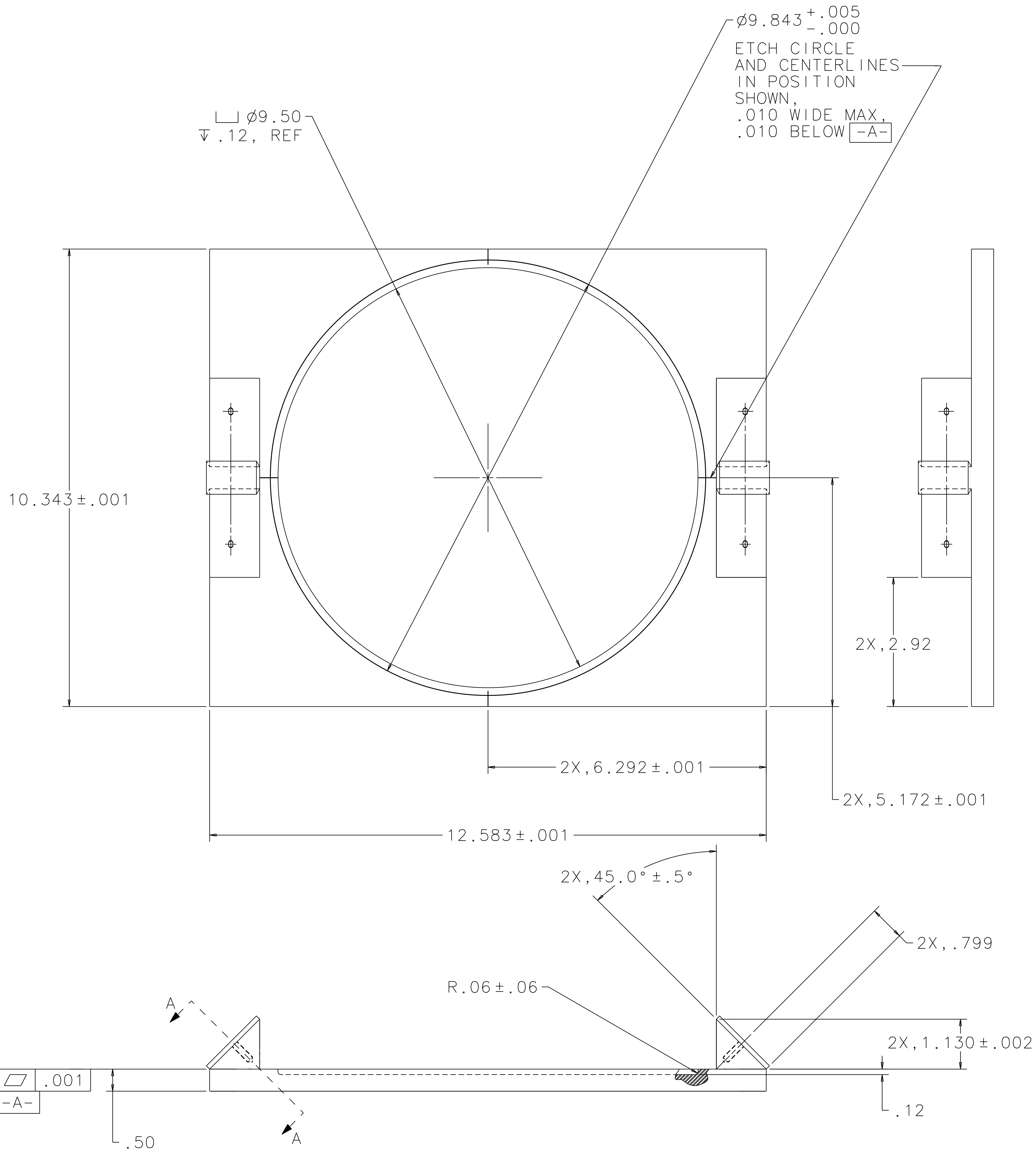
REF	QTY	PART OR IDENTIFYING NO	NOMENCLATURE OR DESCRIPTION	MATERIAL SPECIFICATION	ITEM NO
REF			OPTIC, ITM, 2k		13
REF			WIRE STANDOFF		12
REF			GUIDE ROD		11
REF			MAGNET/STANDOFF ASSEMBLY		10
					9
					8
					7
					6
					5
4			SCREW, SHCS, #8-32 x .75	STAINLESS STEEL	4
1	1		RIGHT BLOCK, TOP		3
1	1		LEFT BLOCK, TOP		2
1	1		BASE PLATE		1

UNLESS OTHERWISE SPECIFIED DIMENSIONS ARE IN INCHES		APPROVALS		DATE	LIGO CALIFORNIA INSTITUTE OF TECHNOLOGY MASSACHUSETTS INSTITUTE OF TECHNOLOGY	
TOLERANCES ARE:	FRACTIONS	DECIMALS	ANGLES			
	0. XX±0.01		ANGLES±0.5°			
	0. XXX±0.005					
	ANGLES±0.5°					
DO NOT SCALE DRAWING		DRAWN		8/98	TITLE	
		J. Romie			GUIDE ROD FIXTURE, ITM, 2K (LOS1d)	
		CHECKED			SIZE	
					E D970573	
NEXT ASSEMBLY		MATERIAL		SCALE		REV
D970572				1/1		B
FILE LOCATION		FINISH		SHEET		OF
/home/dcc/docs/D970573.pdf				1		3

1 2 3 4 5 6 7 8

1 2 3 4 5 6 7 8

REV	DATE	DRAWN BY	CHECKED	DCC	DCN/DESCRIPTION
A	8-14-98	J. Romie			E980220/INITIAL RELEASE
B	9-10-98	J. Romie			E980246/DOVE TAIL CHANGE



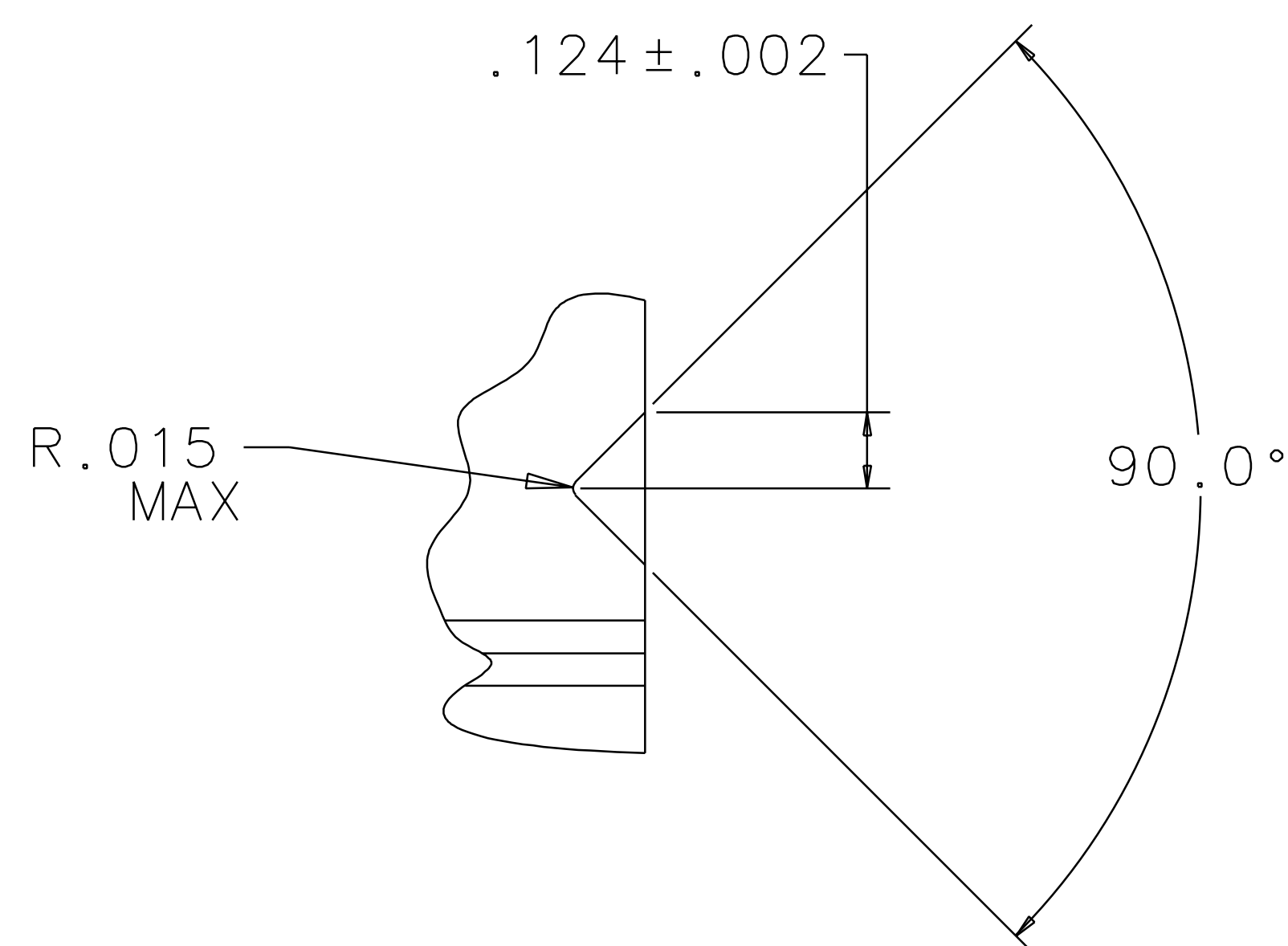
BASE PLATE
MATERIAL: 6061-T6 ALUM

QTY REQD	PART OR IDENTIFYING NO	NOMENCLATURE OR DESCRIPTION	MATERIAL SPECIFICATION	ITEM NO.
UNLESS OTHERWISE SPECIFIED DIMENSIONS ARE IN INCHES TOLERANCES ARE: FRACTIONS DECIMALS ANGLES				
APPROVALS		DATE	LIGO CALIFORNIA INSTITUTE OF TECHNOLOGY MASSACHUSETTS INSTITUTE OF TECHNOLOGY	
DRAWN J. Romie		8/98	TITLE GUIDE ROD FIXTURE ITM, 2k (LOS1d)	
CHECKED			SIZE E D970573	
DO NOT SCALE DRAWING			SCALE 1/1	
NEXT ASSEMBLY		MATERIAL	REV B	
FILE LOCATION		FINISH	SHEET 2 OF 3	

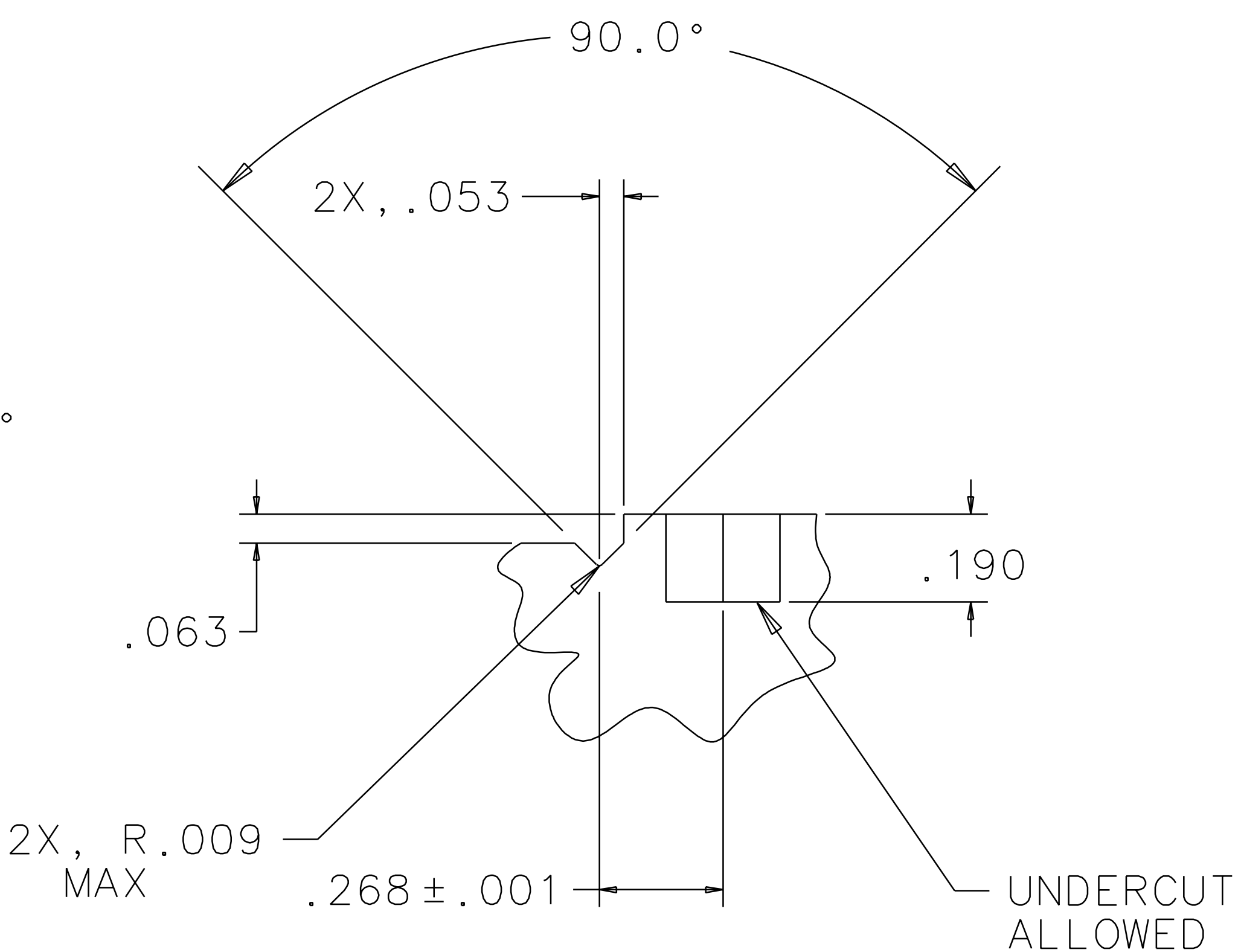
1 2 3 4 5 6 7 8

1 2 3 4 5 6 7 8

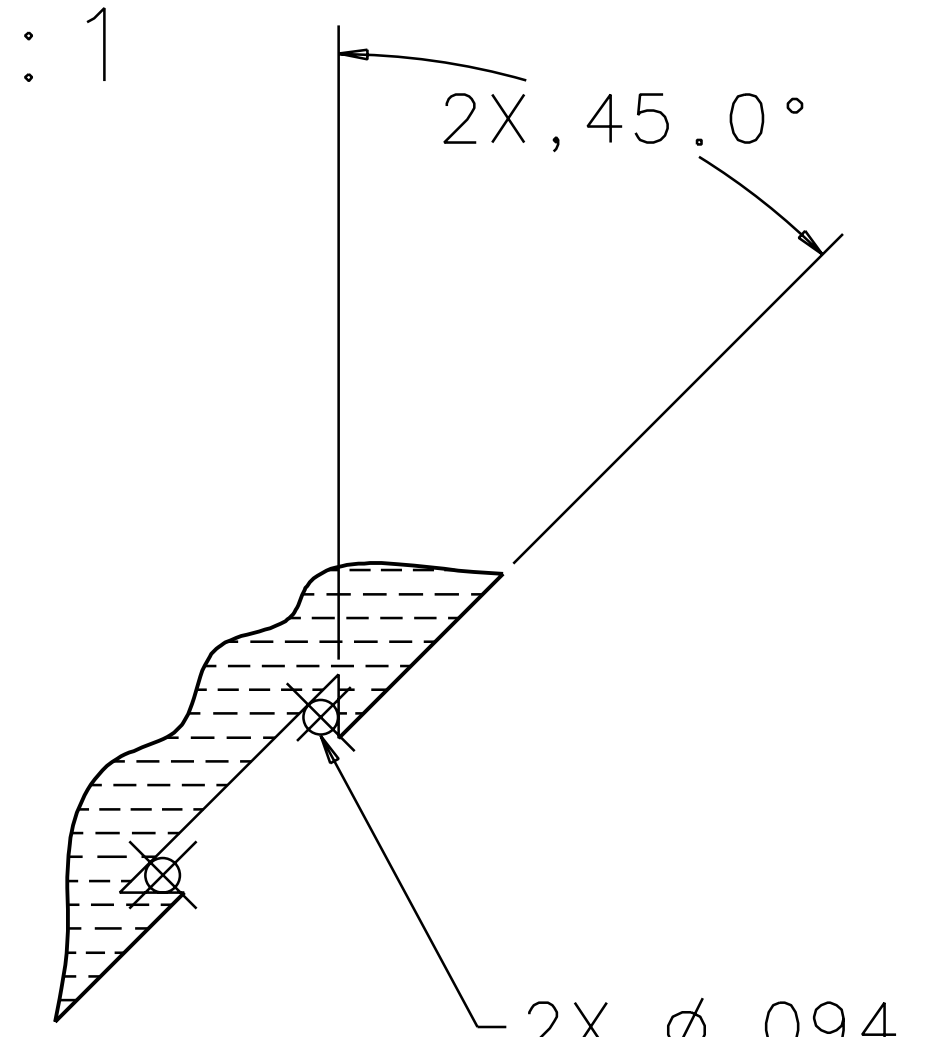
REV	DATE	DRAWN BY	CHECKED	DCC	DCN/DESCRIPTION
A	8-14-98	J. Romie			E980220/INITIAL RELEASE
B	9-10-98	J. Romie			E980246/DOVE TAIL CHANGE



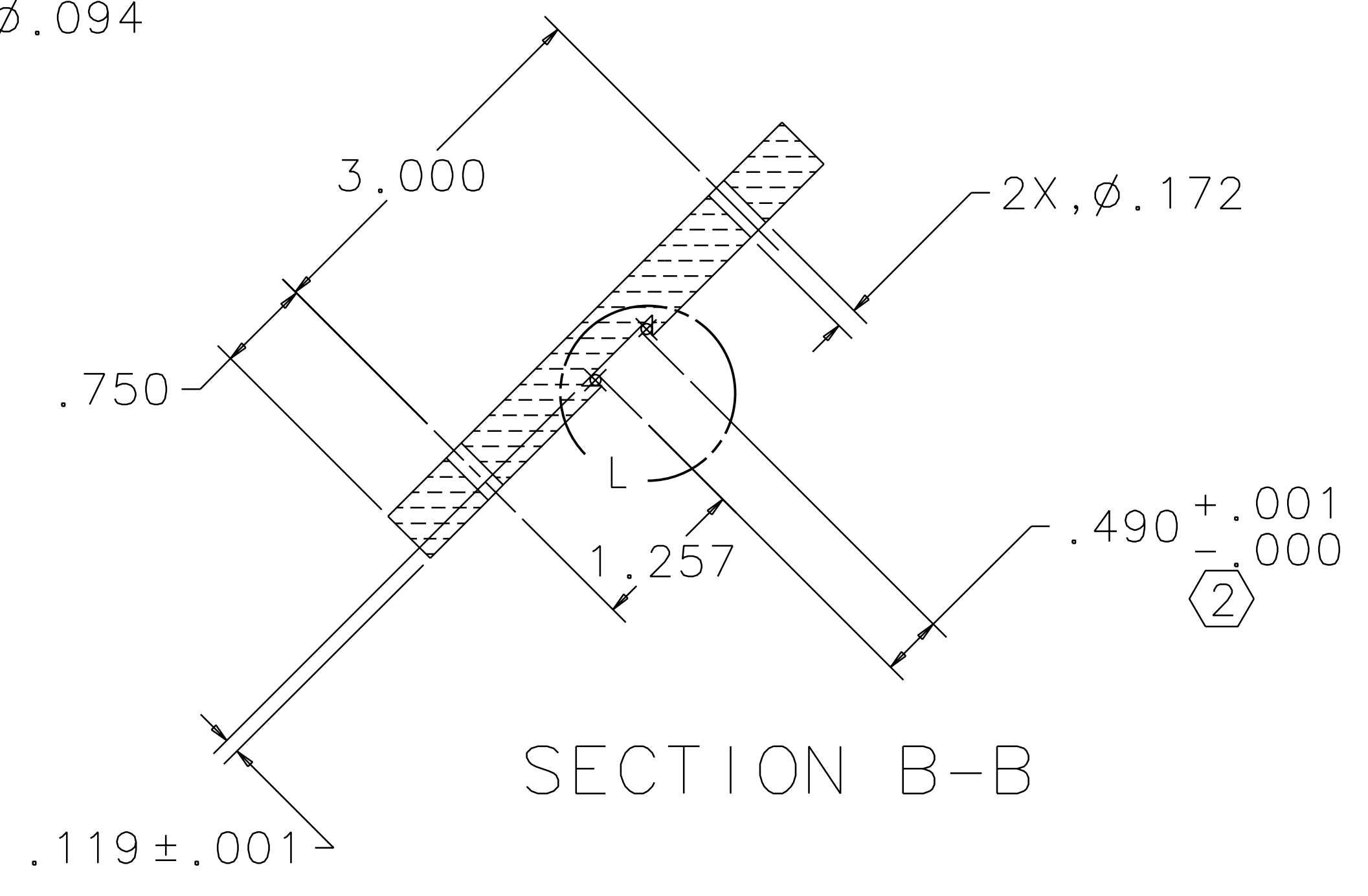
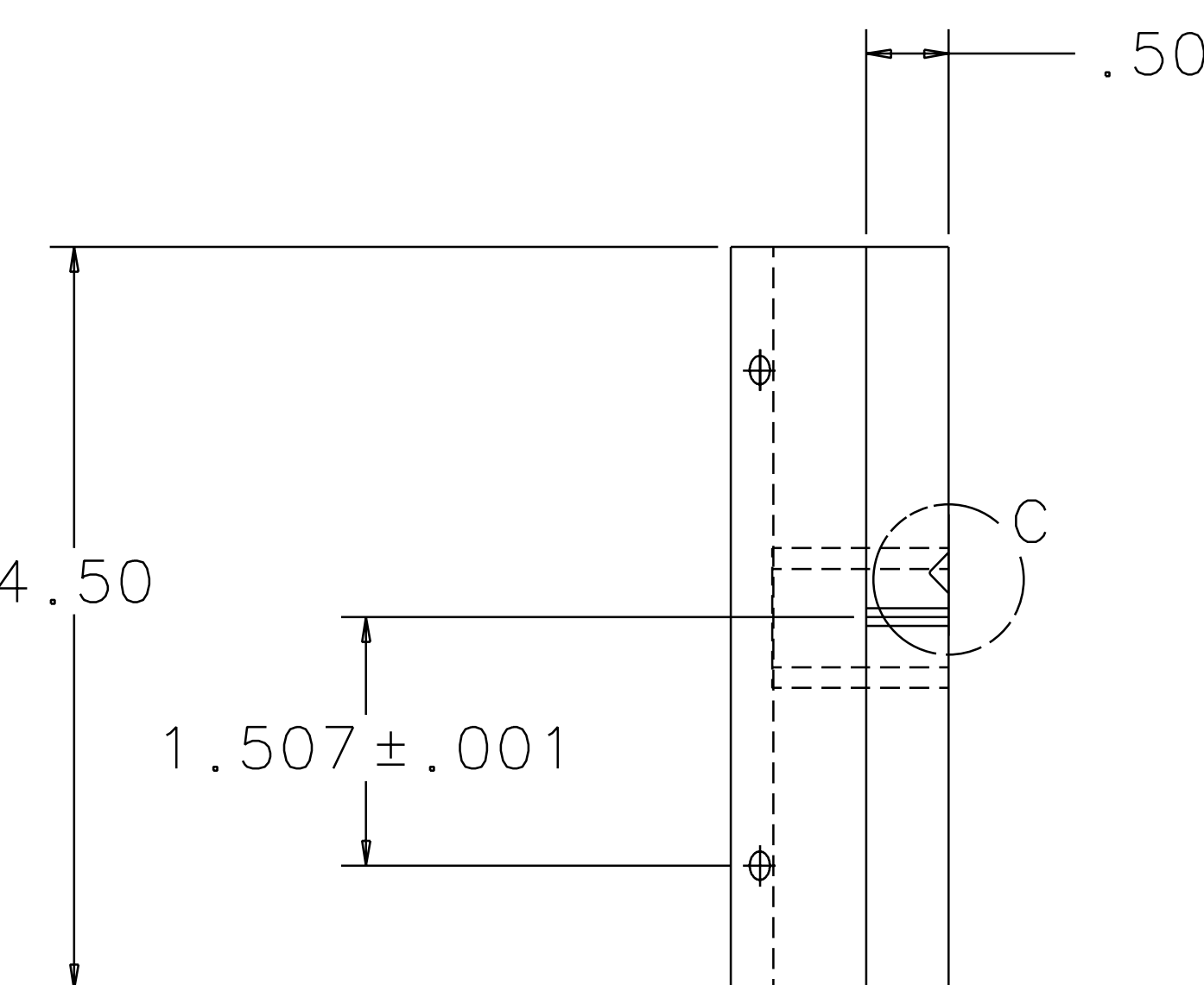
VIEW C
SCALE 4:1



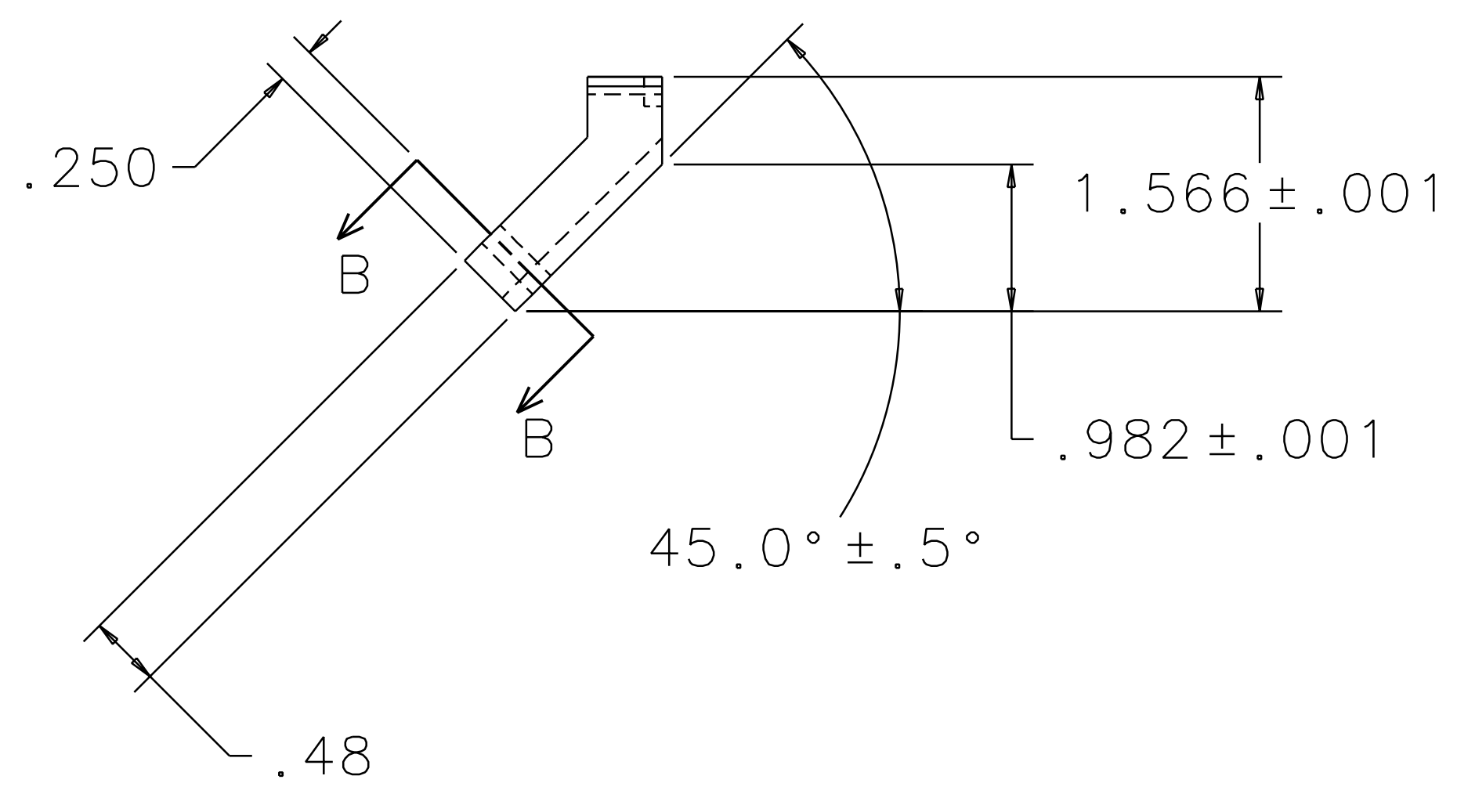
VIEW D
SCALE 4:1



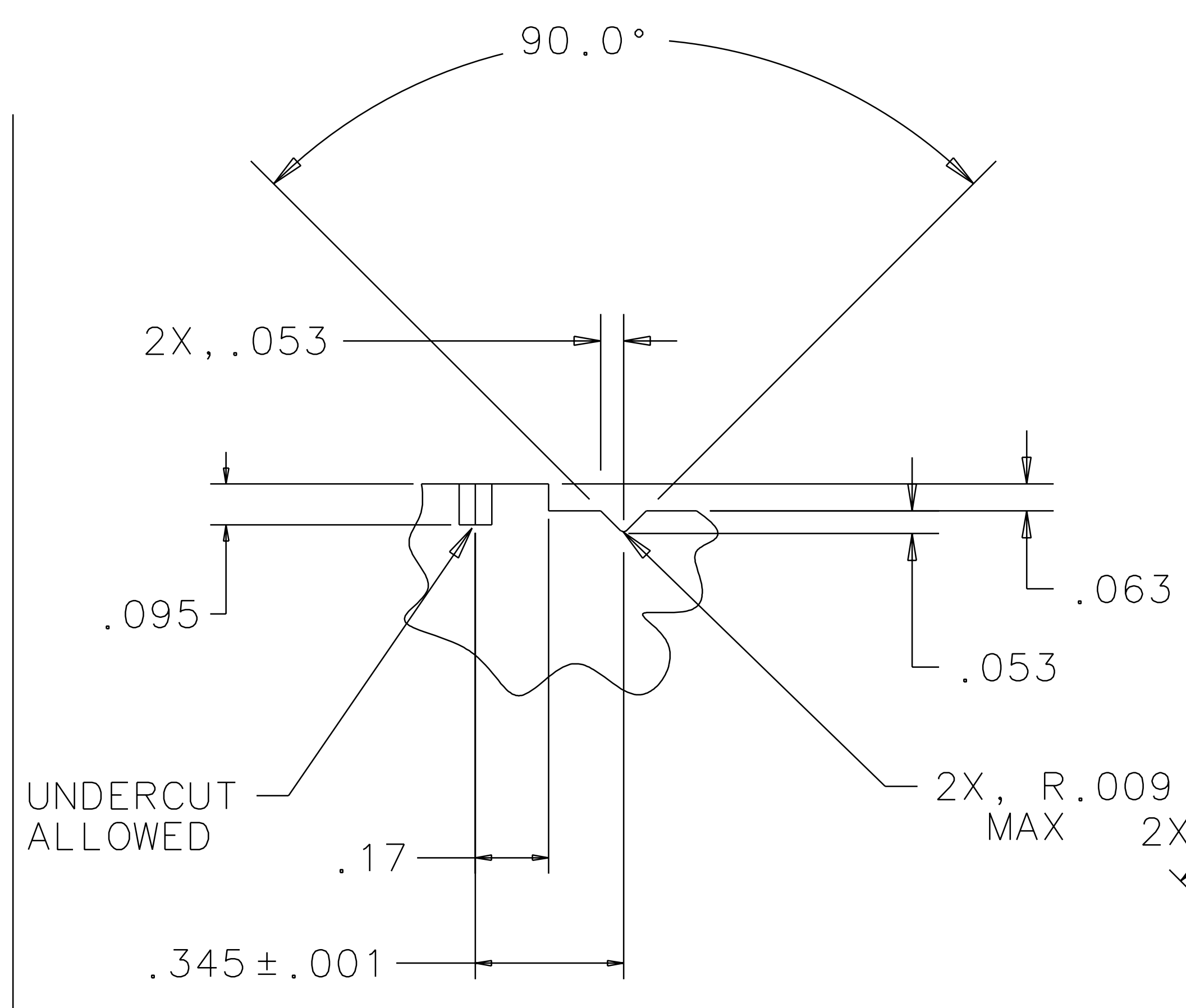
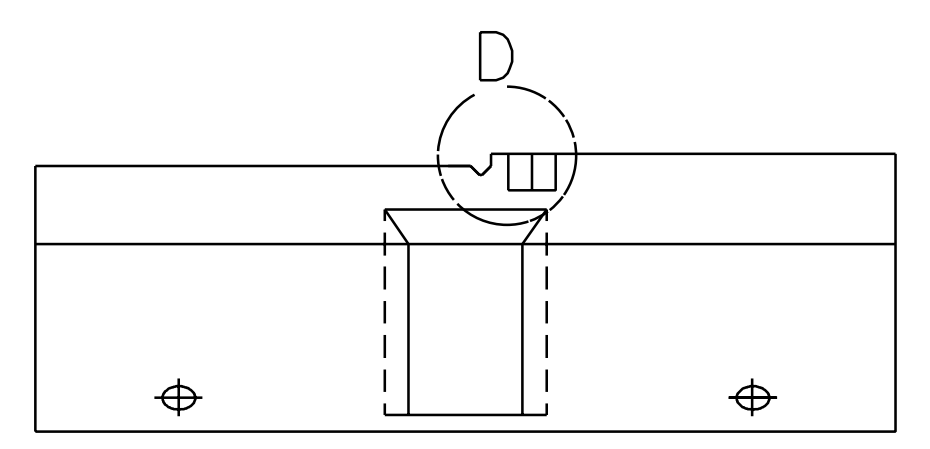
VIEW L
SCALE 2:1



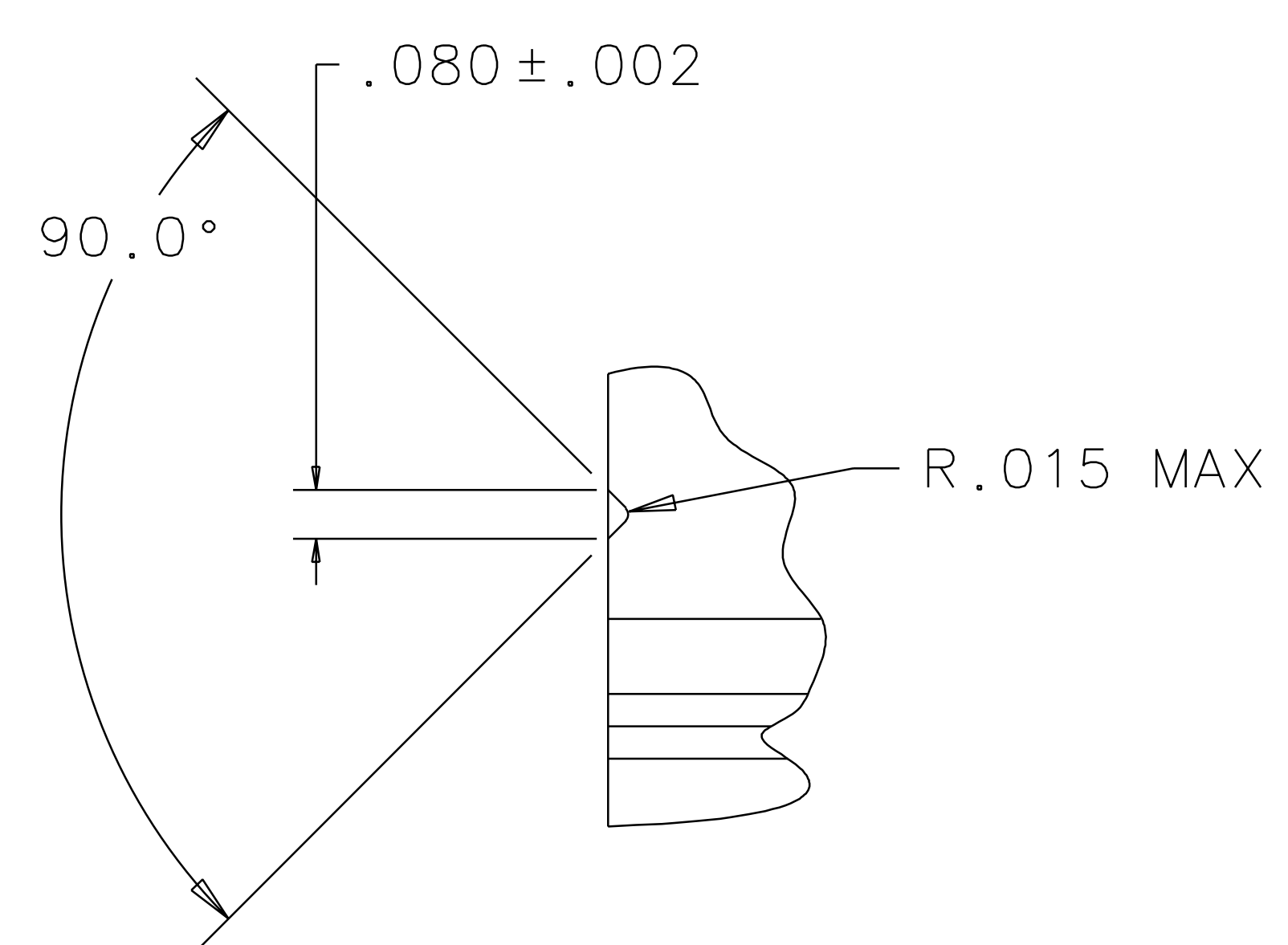
SECTION B-B



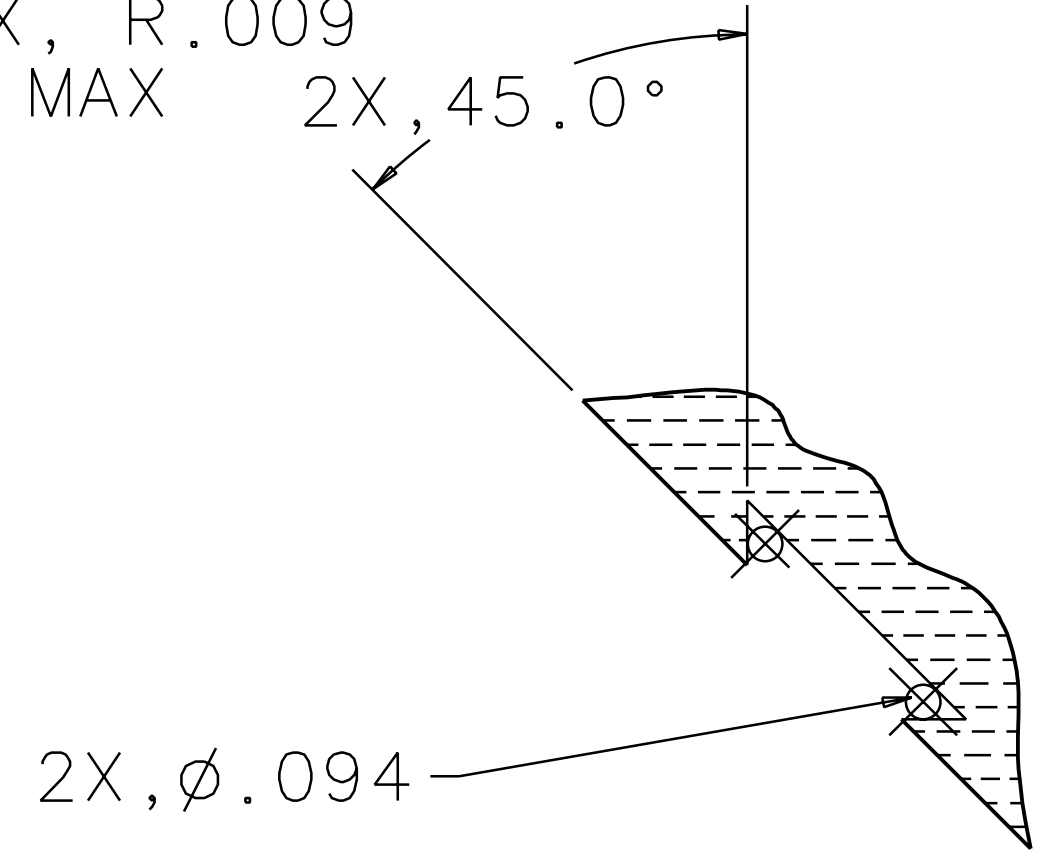
LEFT BLOCK, TOP
MATERIAL: TEFLON



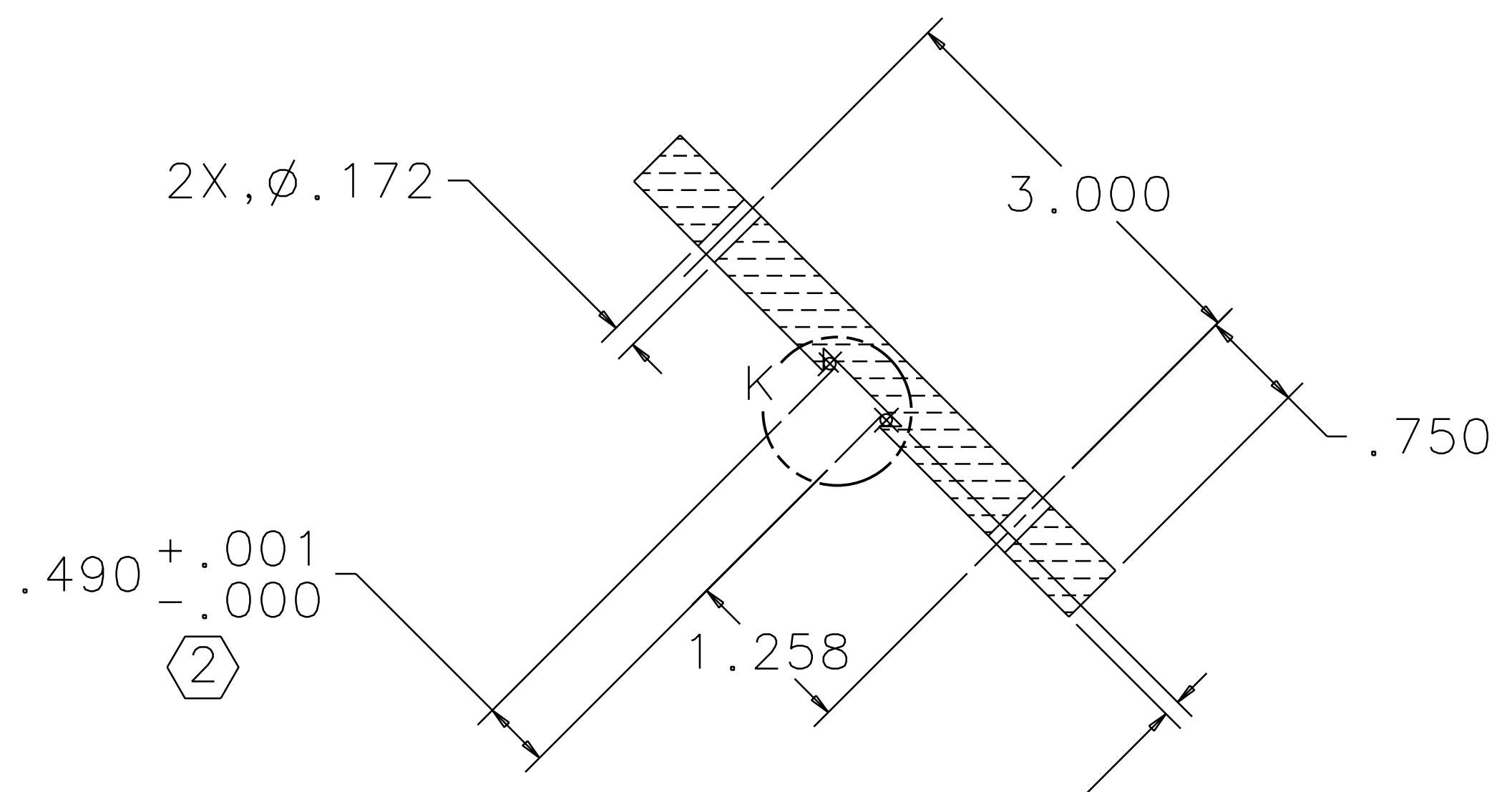
VIEW H
SCALE 4:1



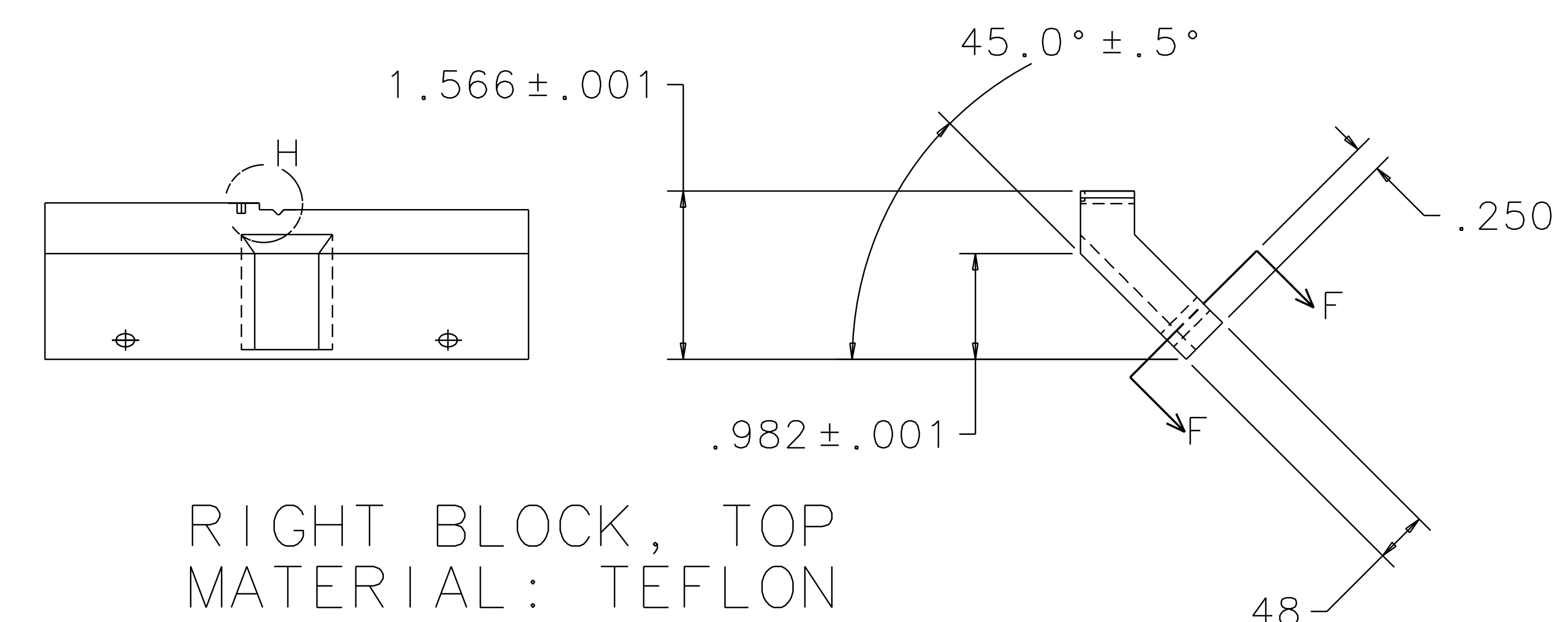
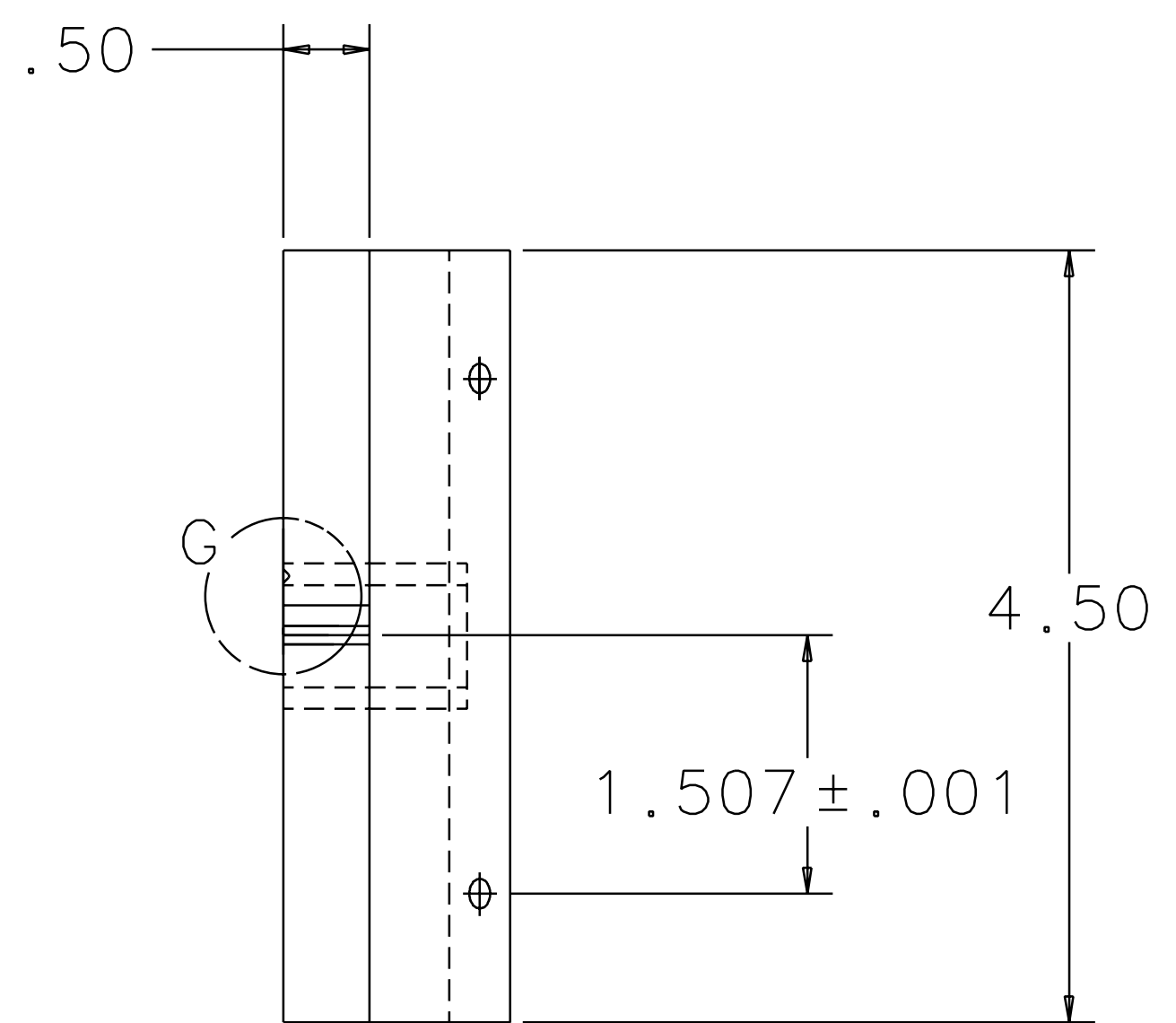
VIEW G
SCALE 4:1



VIEW K
SCALE 2:1



SECTION F-F



RIGHT BLOCK, TOP
MATERIAL: TEFLON

QTY REQ	PART OR IDENTIFYING NO	NOMENCLATURE OR DESCRIPTION	MATERIAL SPECIFICATION	ITEM NO.
		LIGO CALIFORNIA INSTITUTE OF TECHNOLOGY MASSACHUSETTS INSTITUTE OF TECHNOLOGY		
UNLESS OTHERWISE SPECIFIED DIMENSIONS ARE IN INCHES TOLERANCES ARE: FRACTIONS DECIMALS ANGLES		APPROVALS	DATE	TITLE
0.XX±0.01 0.XXX±0.005 ANGLES±0.5°		DRAWN J. Romie	8/98	GUIDE ROD FIXTURE ITM, 2k (LOS1d)
DO NOT SCALE DRAWING		CHECKED		SIZE E
NEXT ASSEMBLY	MATERIAL			REV B
FILE LOCATION	FINISH			SCALE 1/1
				SHEET 3 OF 3

1 2 3 4 5 6 7 8