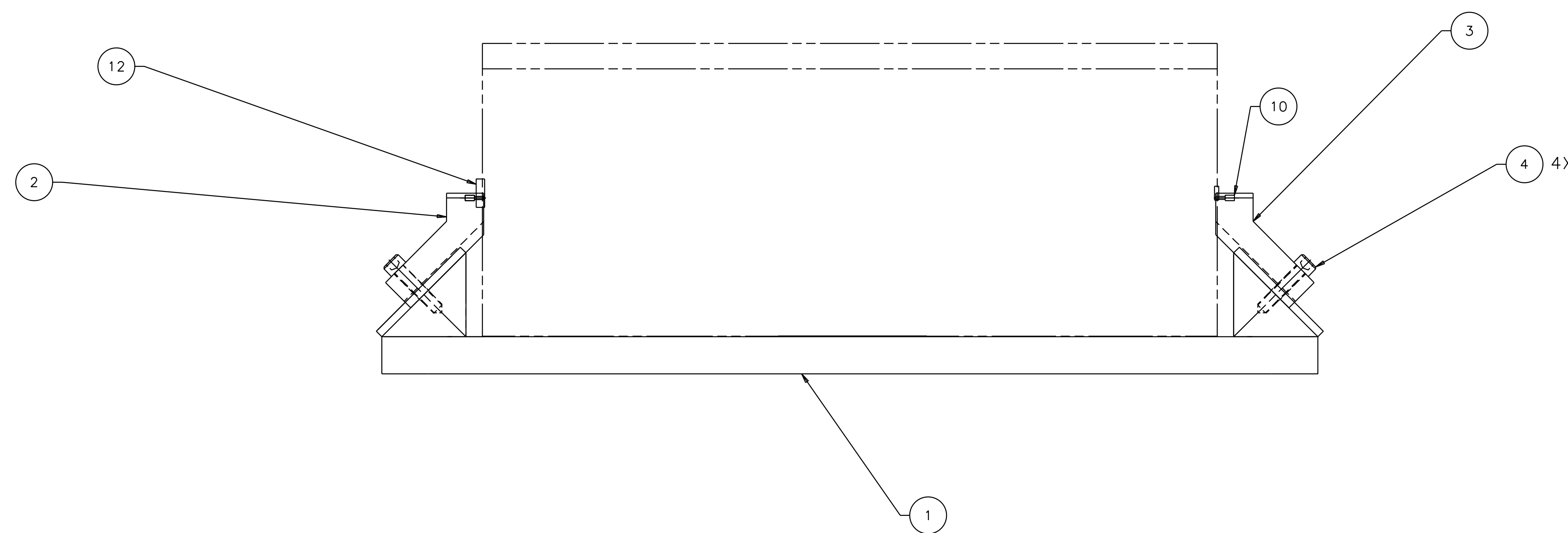
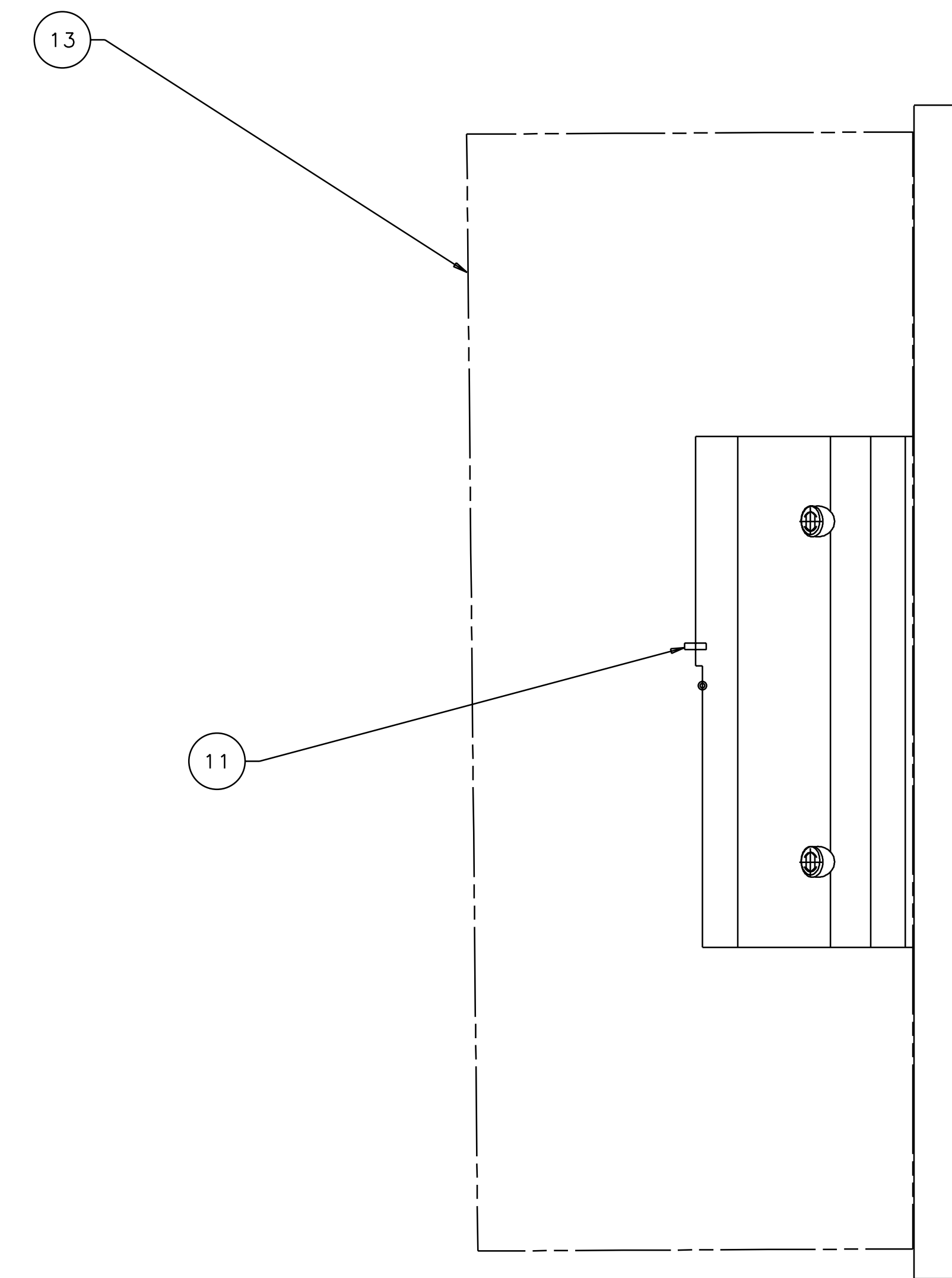
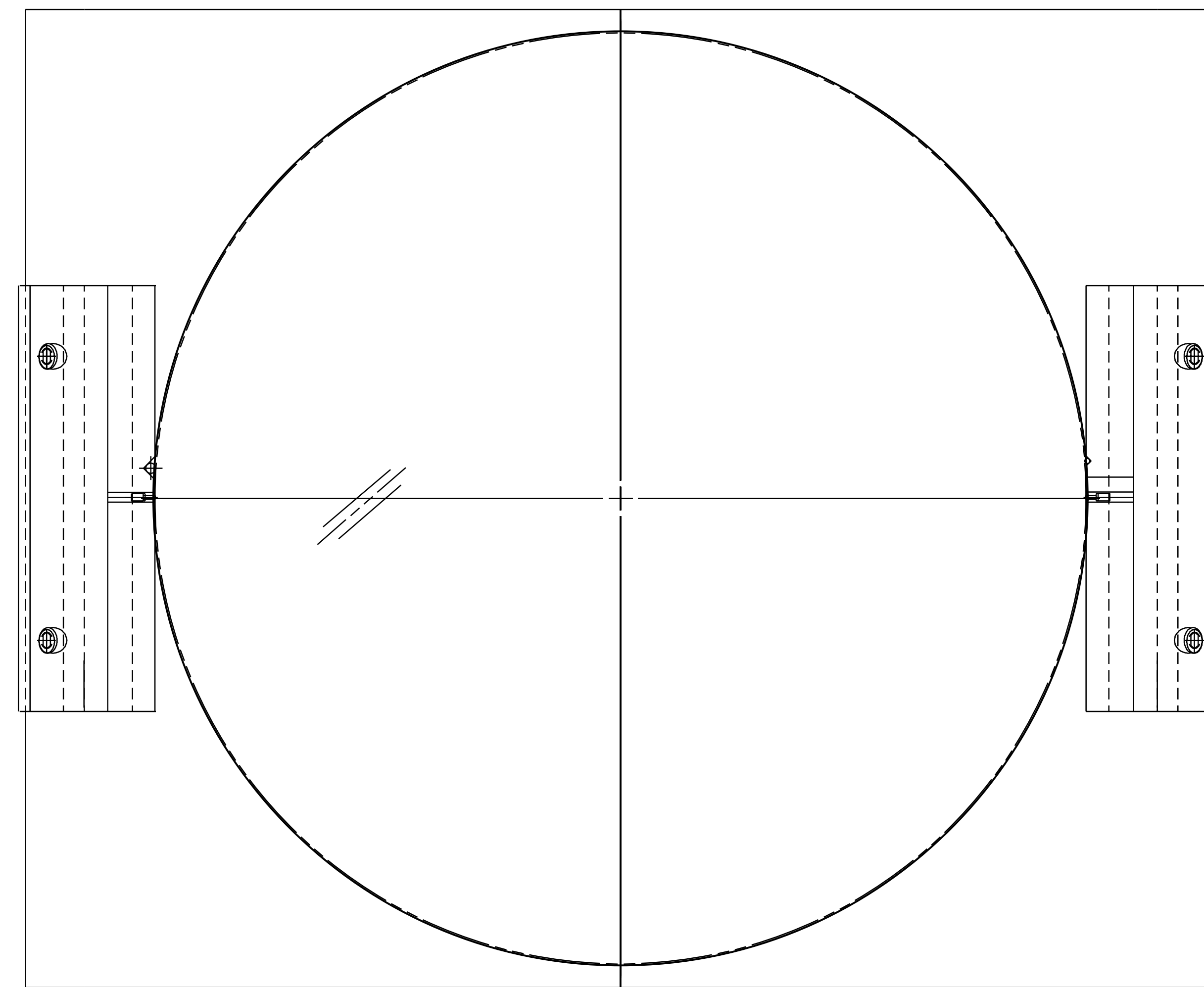


1 2 3 4 5 6 7 8

REV	DATE	DRAWN BY	CHECKED	DC	DCN/DESCRIPTION
A	8/14/98	J. Romie			E980220/INITIAL RELEASE
B	9/10/98	J. Romie			E980246/DOVE TAIL CHANGE

- NOTES: (UNLESS OTHERWISE SPECIFIED)
- THIS FIXTURE IS TO BE USED WITH AN OPTIC THAT IS  $\phi 9.84"$  X  $3.94"$  THICK ( $\phi 25\text{cm}$  x  $10\text{cm}$  THICK), THICK-SIDE-UP ORIENTED WEDGE. CLOSE SLIP FIT.
  - THE RIGHT BLOCK, TOP IS USED TO MOUNT THE GUIDE ROD AND THE LEFT BLOCK, TOP IS USED TO MOUNT THE WIRE STANDOFF.
  - USE OF THIS FIXTURE IS COVERED IN LIGO-E970154.
  - SPECIFICATIONS COVERING THE FABRICATION OF THIS ASSEMBLY ARE DETAILED IN LIGO-E970155, THE LARGE OPTIC SUSPENSION (LOS) FIXTURES AND COMPONENTS FABRICATION SPECIFICATION.



REF	DESCRIPTION	QTY	MATERIAL	ITEM NO.
13	OPTIC, ITM, 2k			13
12	WIRE STANDOFF			12
11	GUIDE ROD			11
10	MAGNET/STANDOFF ASSEMBLY			10
9				9
8				8
7				7
6				6
5				5
4	SCREW, SHCS, #8-32 x .75		STAINLESS STEEL	4
3	RIGHT BLOCK, TOP			3
2	LEFT BLOCK, TOP			2
1	BASE PLATE			1

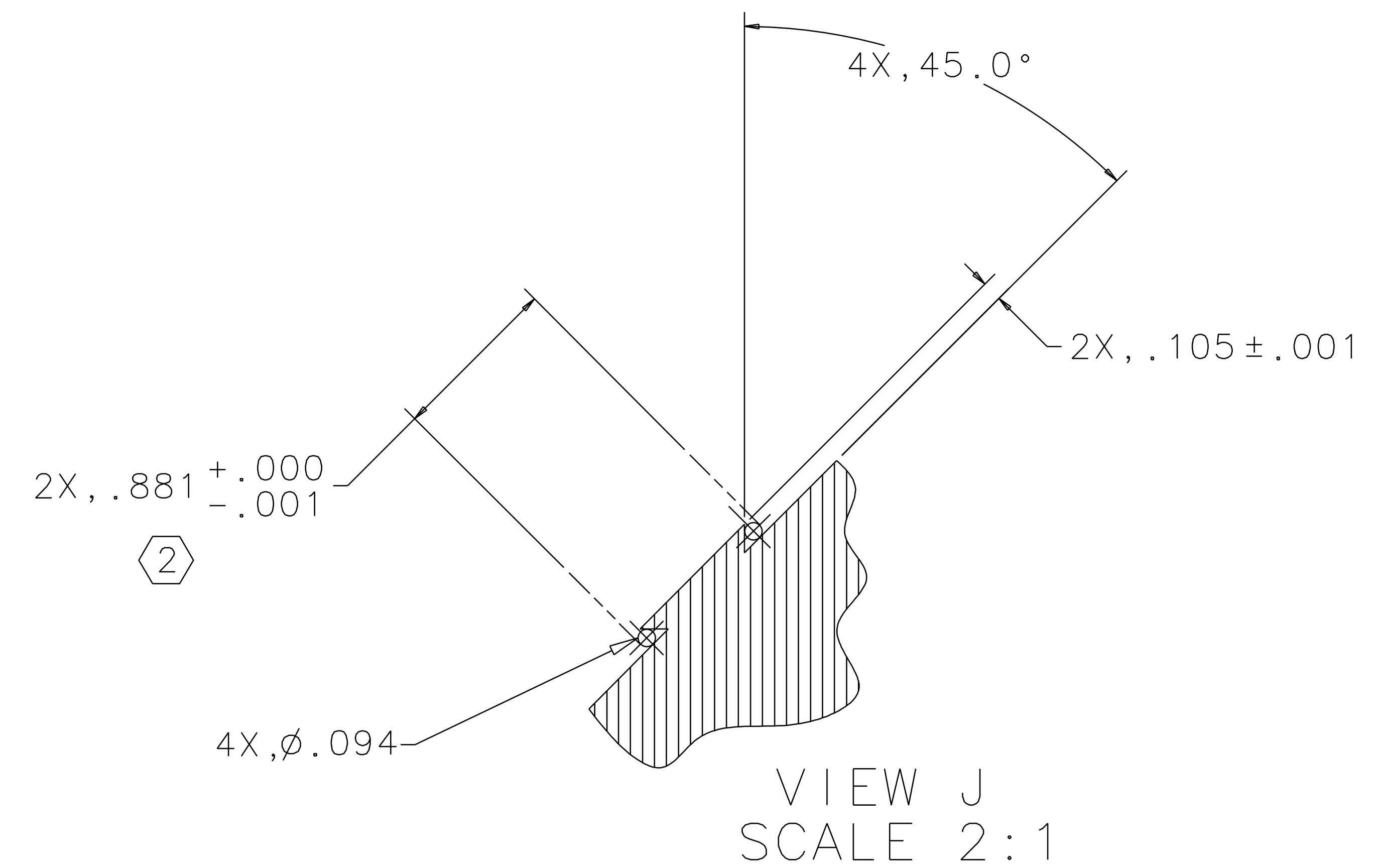
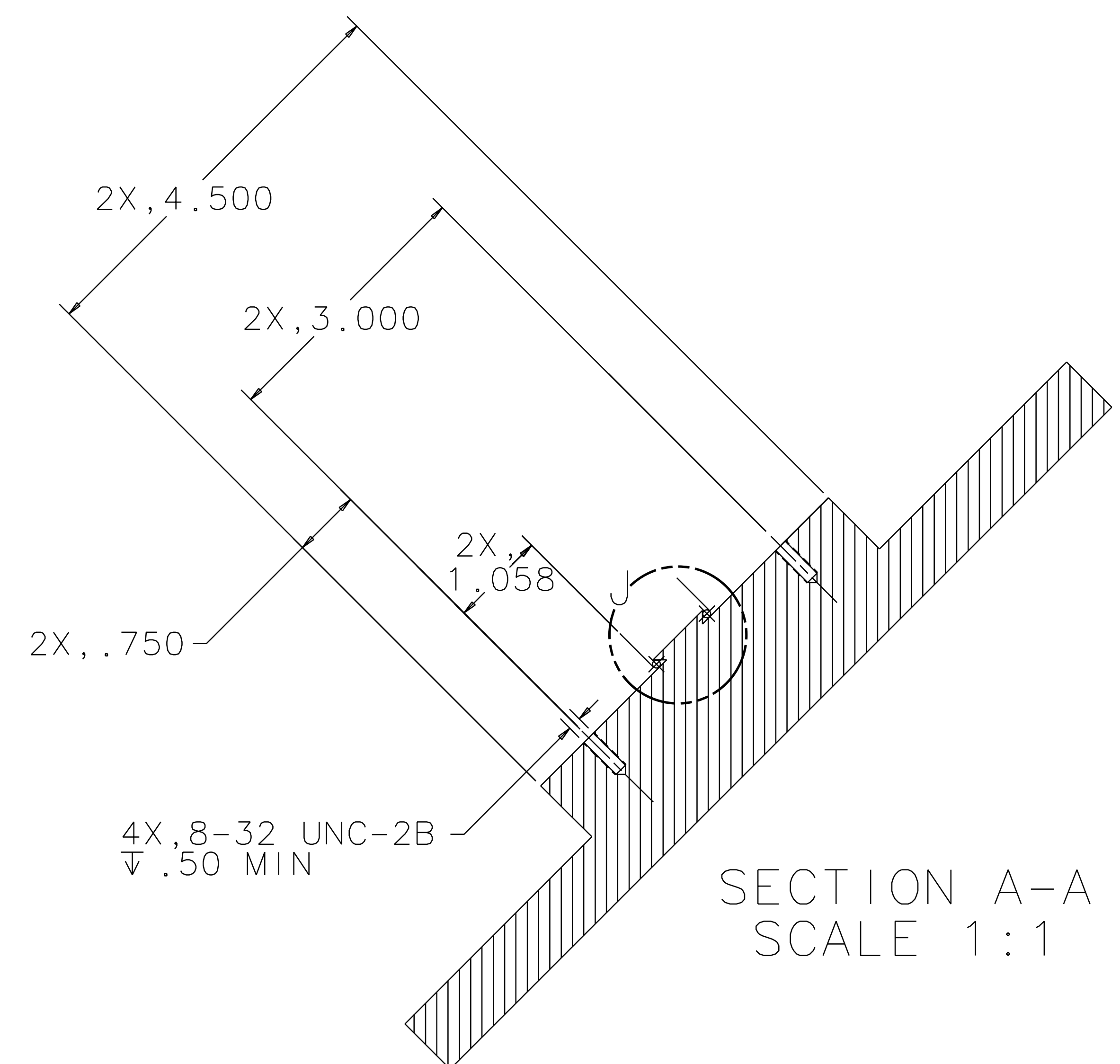
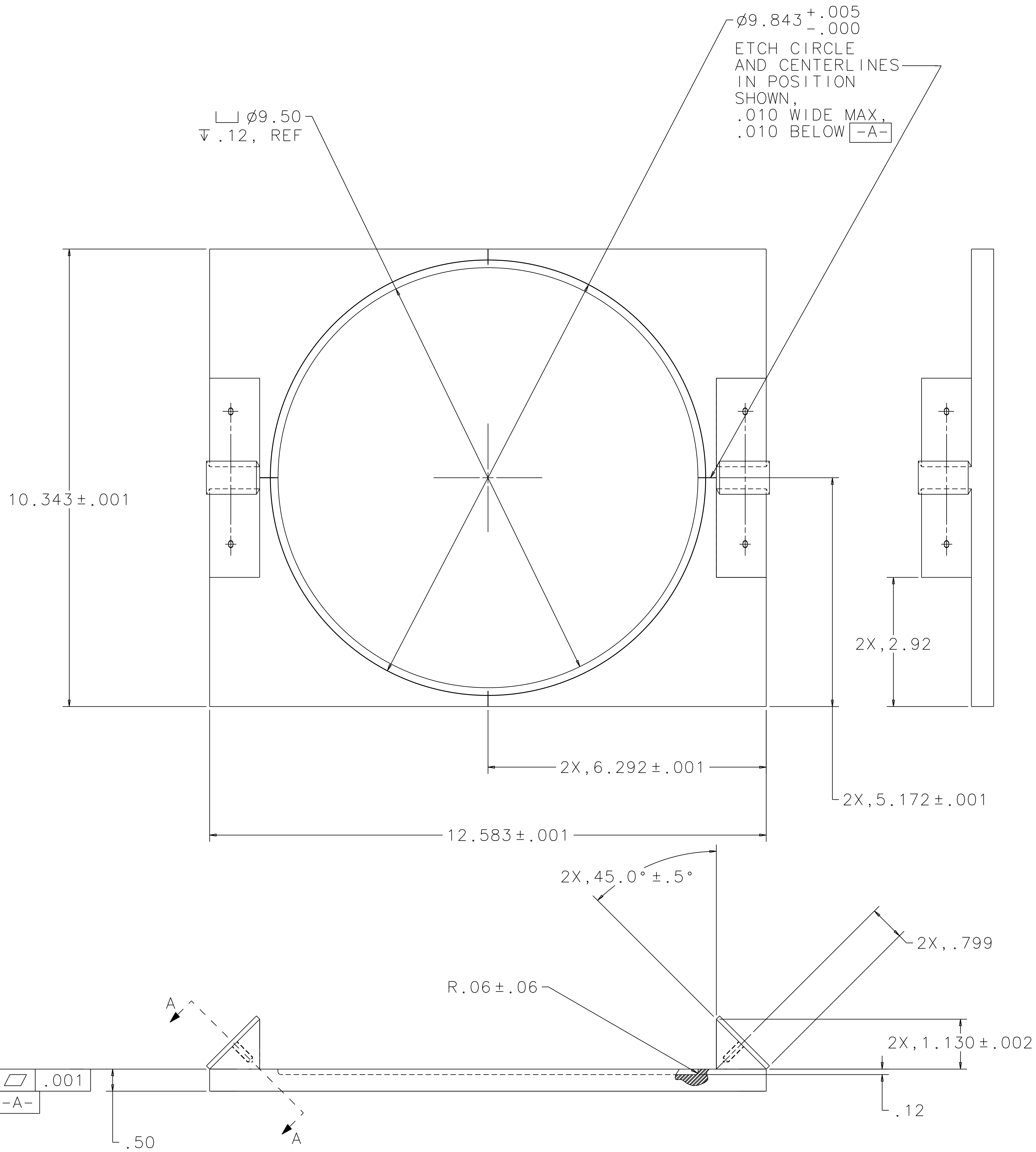
UNLESS OTHERWISE SPECIFIED DIMENSIONS ARE IN INCHES		APPROVALS		DATE	LIGO CALIFORNIA INSTITUTE OF TECHNOLOGY MASSACHUSETTS INSTITUTE OF TECHNOLOGY	
TOLERANCES ARE:	DECIMALS	ANGLES		8/98	TITLE GUIDE ROD FIXTURE, ITM, 4k (LOS1b)	
FRACTIONS	0. XX ± 0.01				SIZE E D970574	
	0. XXX ± 0.005				SCALE 1/1	
	ANGLES ± 0.5°				REV B	
DO NOT SCALE DRAWING					SHEET 1 OF 3	

NEXT ASSEMBLY D970560  
FILE LOCATION /home/dcc/docs/D970574.pdf

1 2 3 4 5 6 7 8

1 2 3 4 5 6 7 8

REV	DATE	DRAWN BY	CHECKED	DCC	DCN/DESCRIPTION
A	8-14-98	J. Romie			E980220/INITIAL RELEASE
B	9-10-98	J. Romie			E980246/DOVE TAIL CHANGE



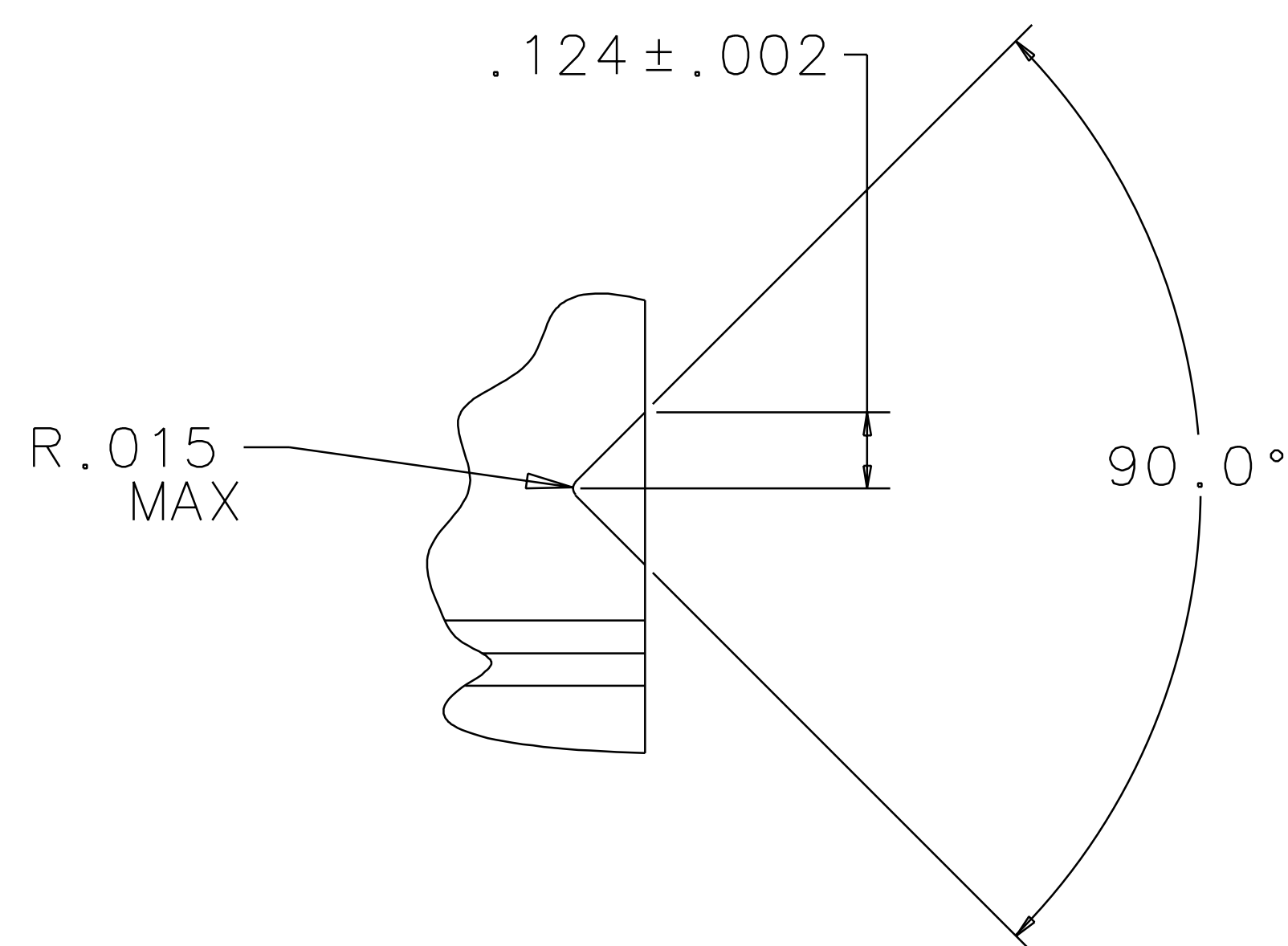
BASE PLATE  
MATERIAL: 6061-T6 ALUM

QTY REQD	PART OR IDENTIFYING NO	NOMENCLATURE OR DESCRIPTION	MATERIAL SPECIFICATION	ITEM NO.
UNLESS OTHERWISE SPECIFIED DIMENSIONS ARE IN INCHES				
TOLERANCES ARE:				
FRACTIONS	DECIMALS	ANGLES		
0.XX $\pm$ 0.01	0.XXX $\pm$ 0.005	ANGLES $\pm$ 0.5°		
DO NOT SCALE DRAWING				
APPROVALS		DATE	LIGO CALIFORNIA INSTITUTE OF TECHNOLOGY MASSACHUSETTS INSTITUTE OF TECHNOLOGY	
DRAWN J. Romie		8/98	TITLE GUIDE ROD FIXTURE ITM, 4k (LOS1b)	
CHECKED			SIZE E D970574	
MATERIAL			SCALE 1/1	
FINISH			SHEET 2 OF 3	

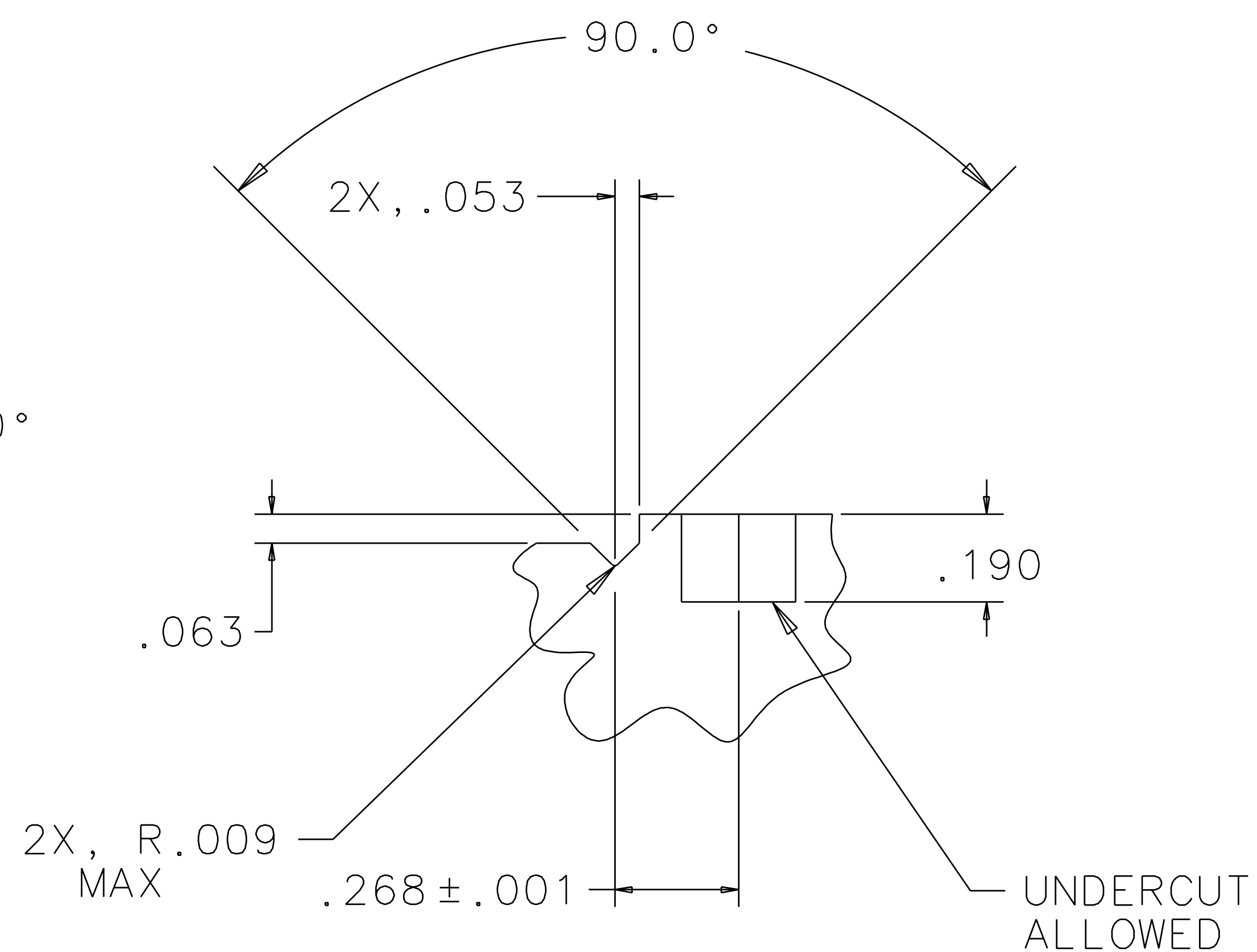
1 2 3 4 5 6 7 8

1 2 3 4 5 6 7 8

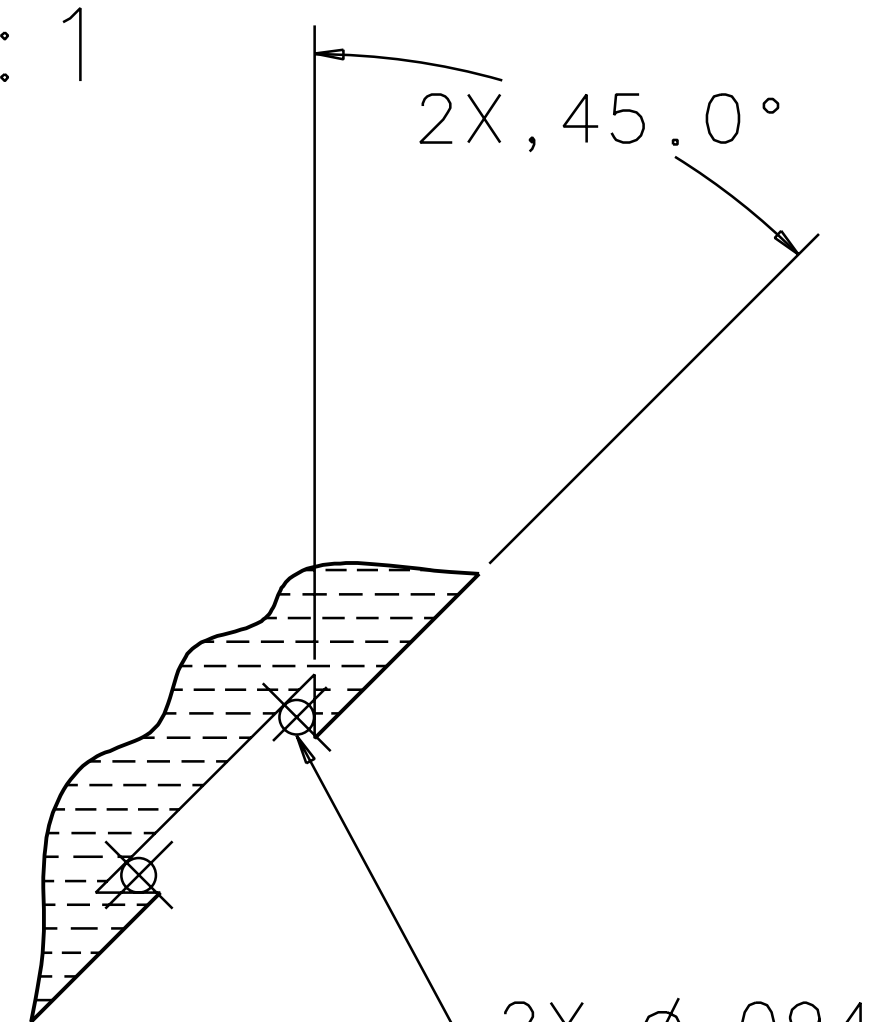
REV	DATE	DRAWN BY	CHECKED	DCC	DCN/DESCRIPTION
A	8-14-98	J. Romie			E980220/INITIAL RELEASE
B	9-10-98	J. Romie			E980246/DOVE TAIL CHANGE



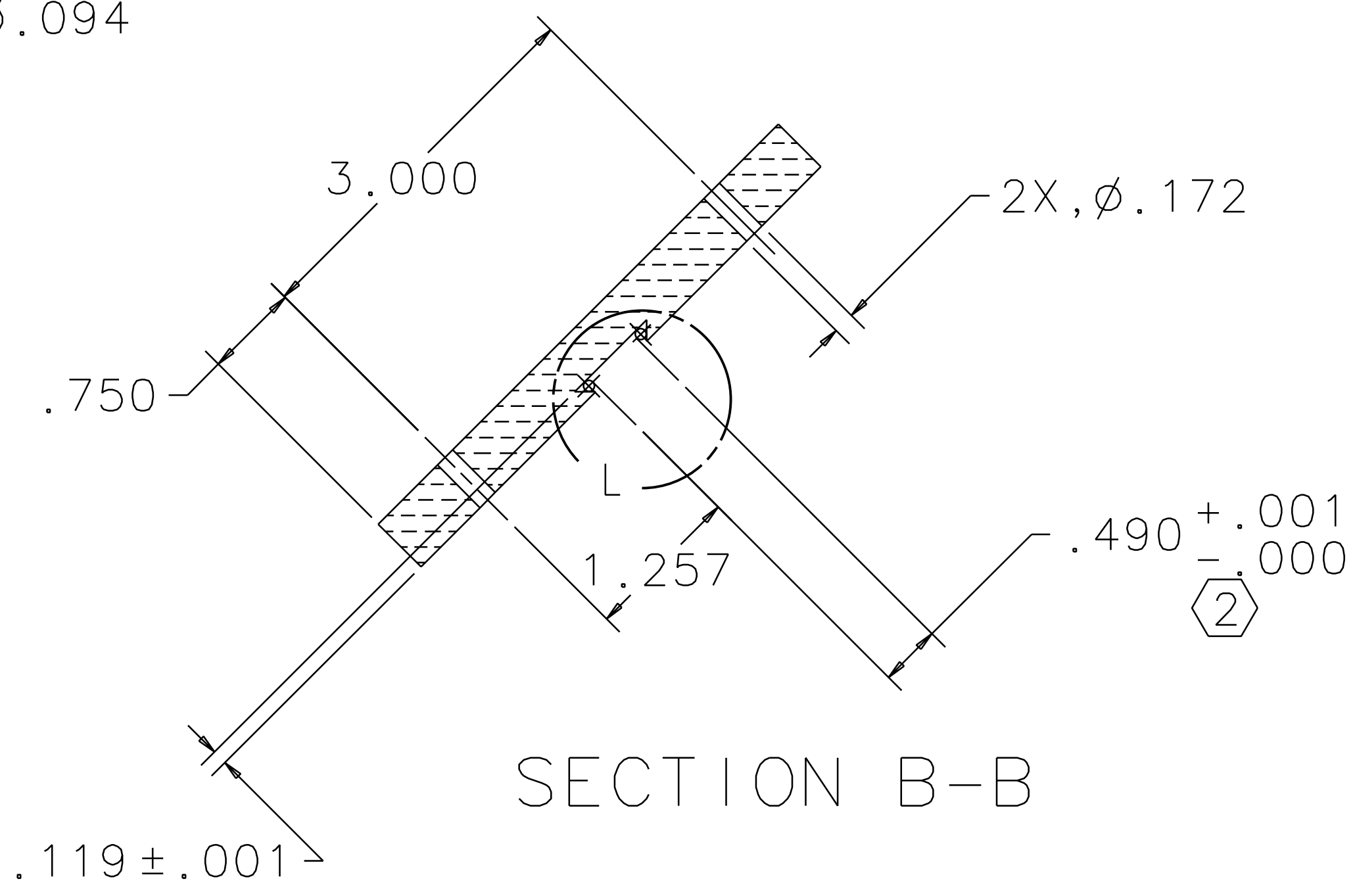
VIEW C  
SCALE 4:1



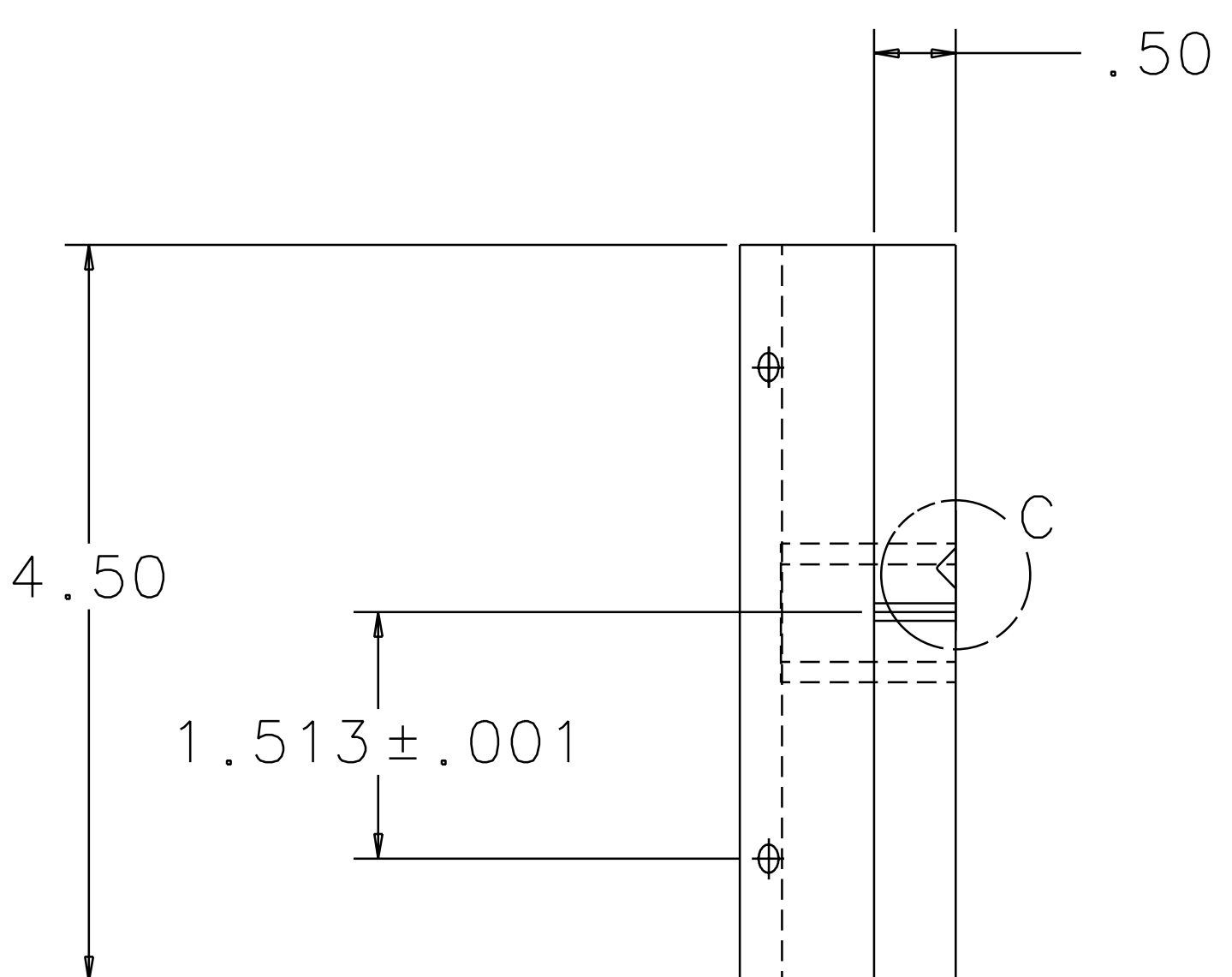
VIEW D  
SCALE 4:1



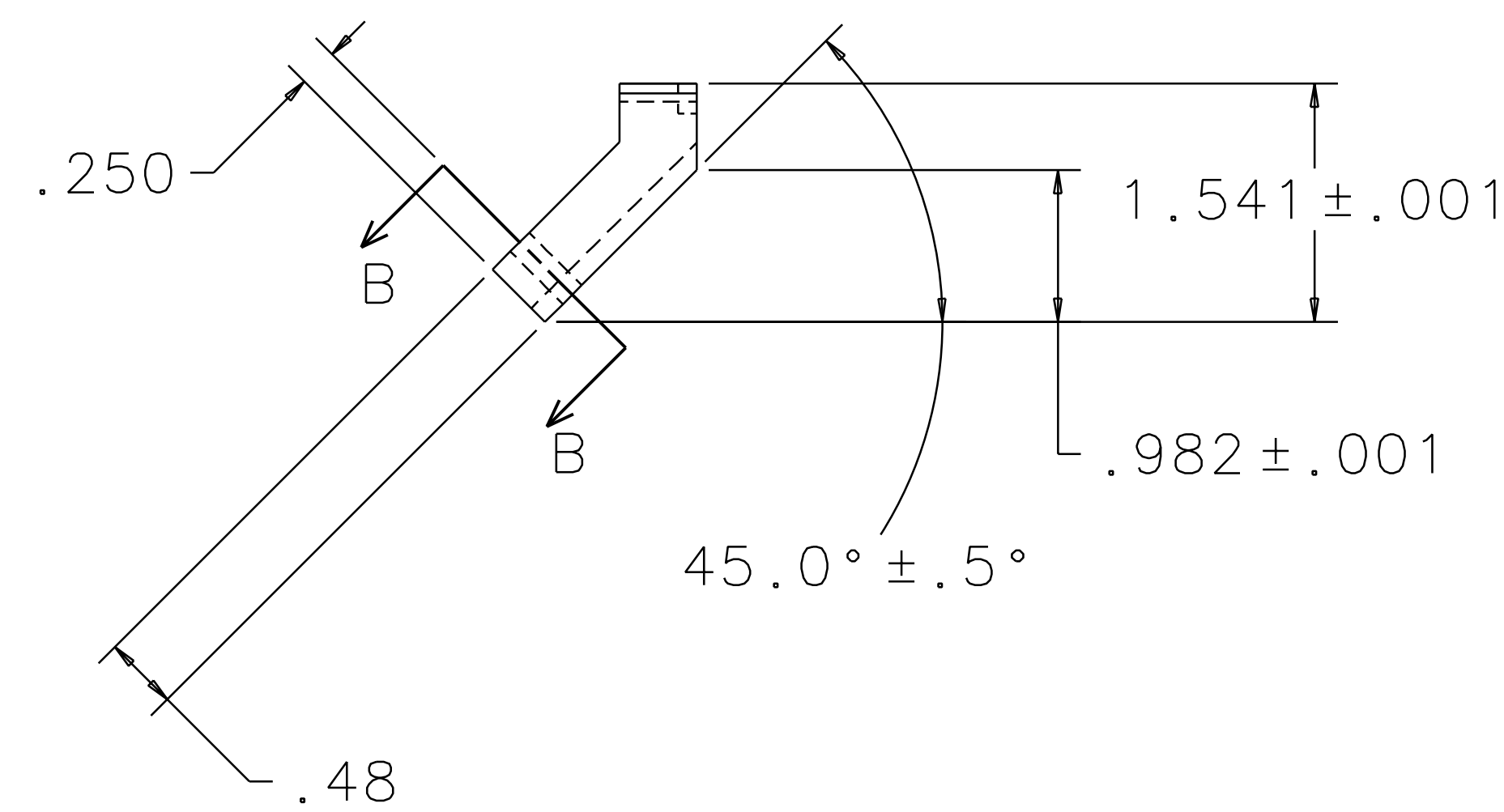
VIEW L  
SCALE 2:1



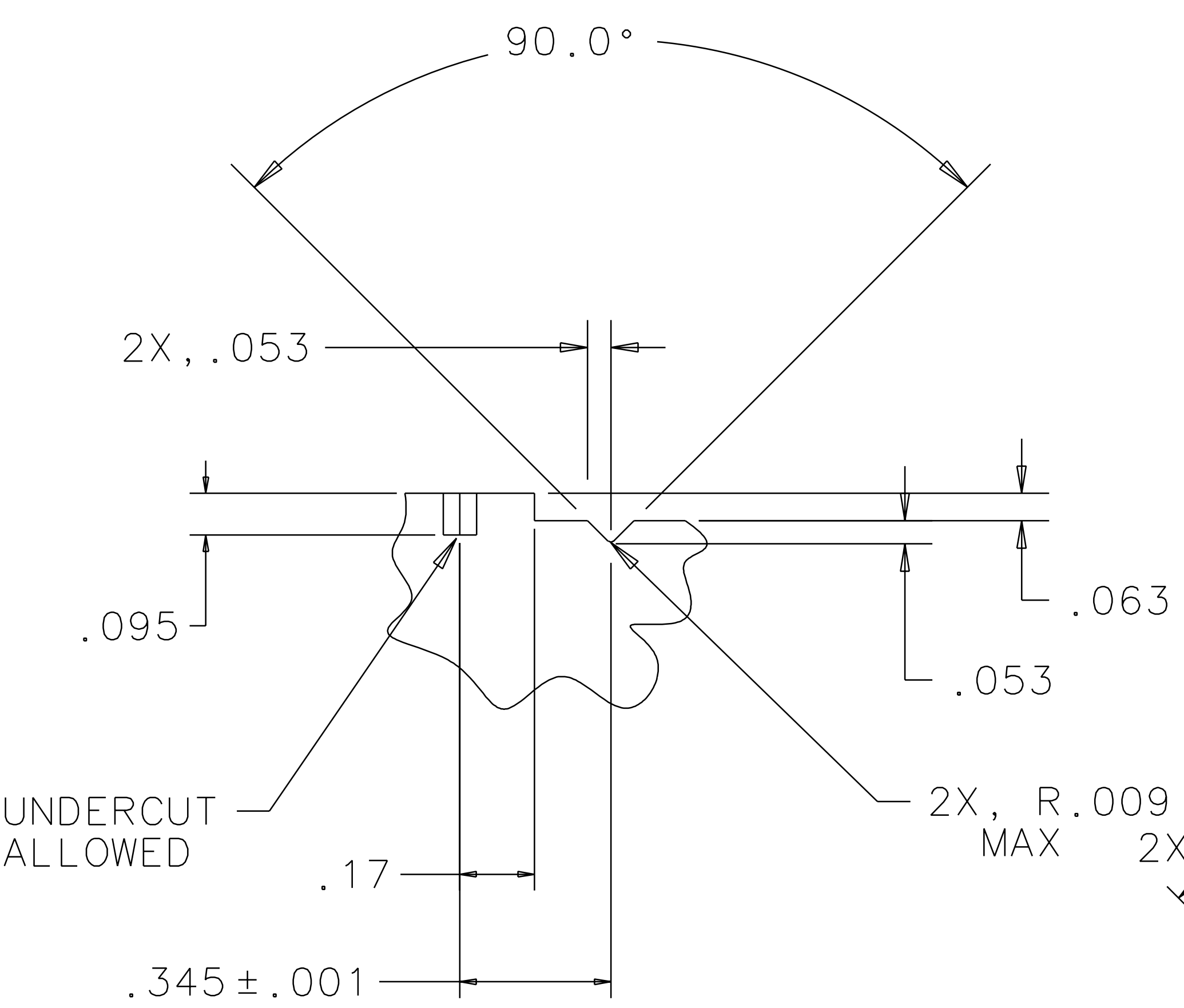
SECTION B-B



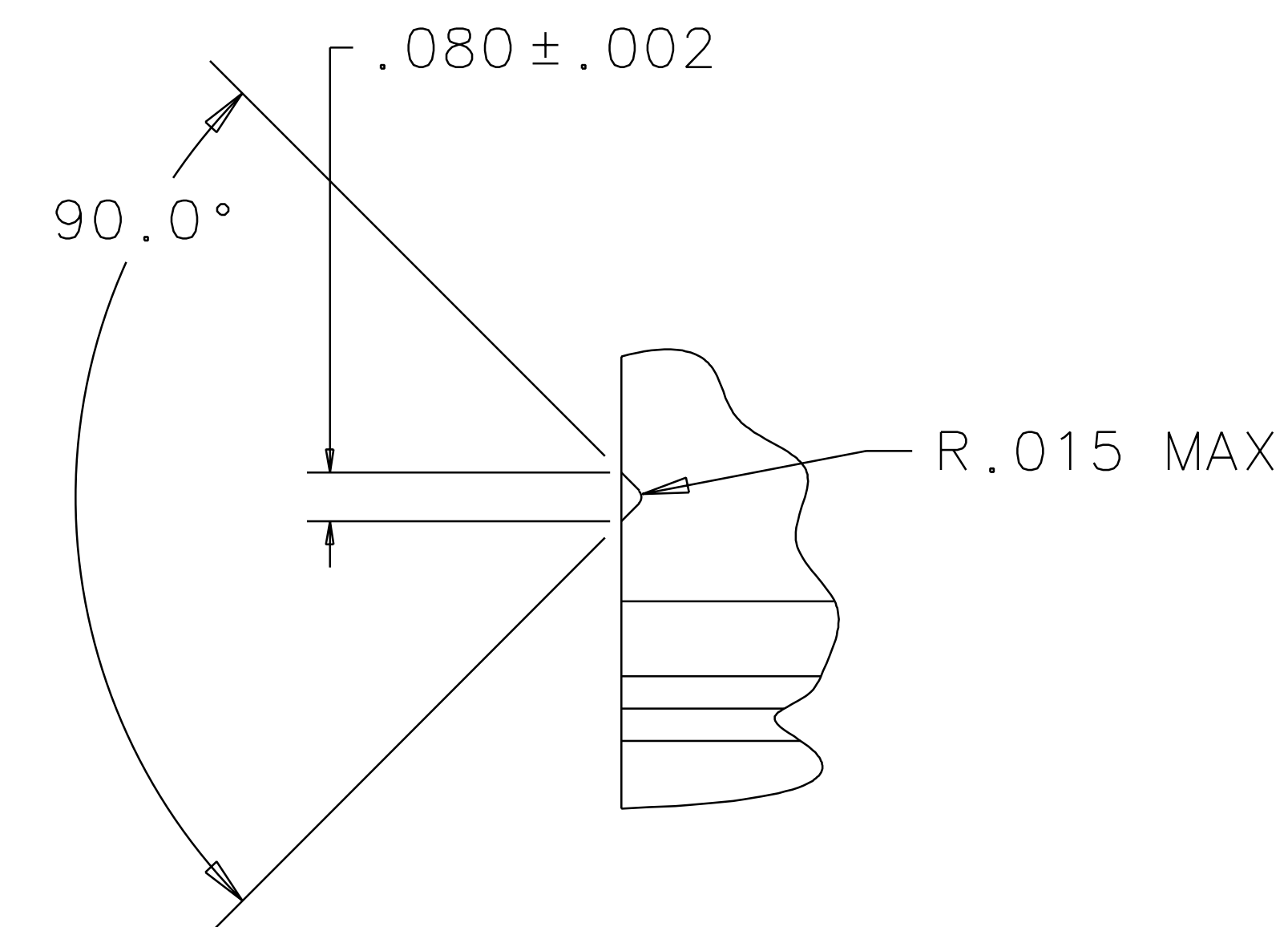
LEFT BLOCK, TOP  
MATERIAL: TEFLON



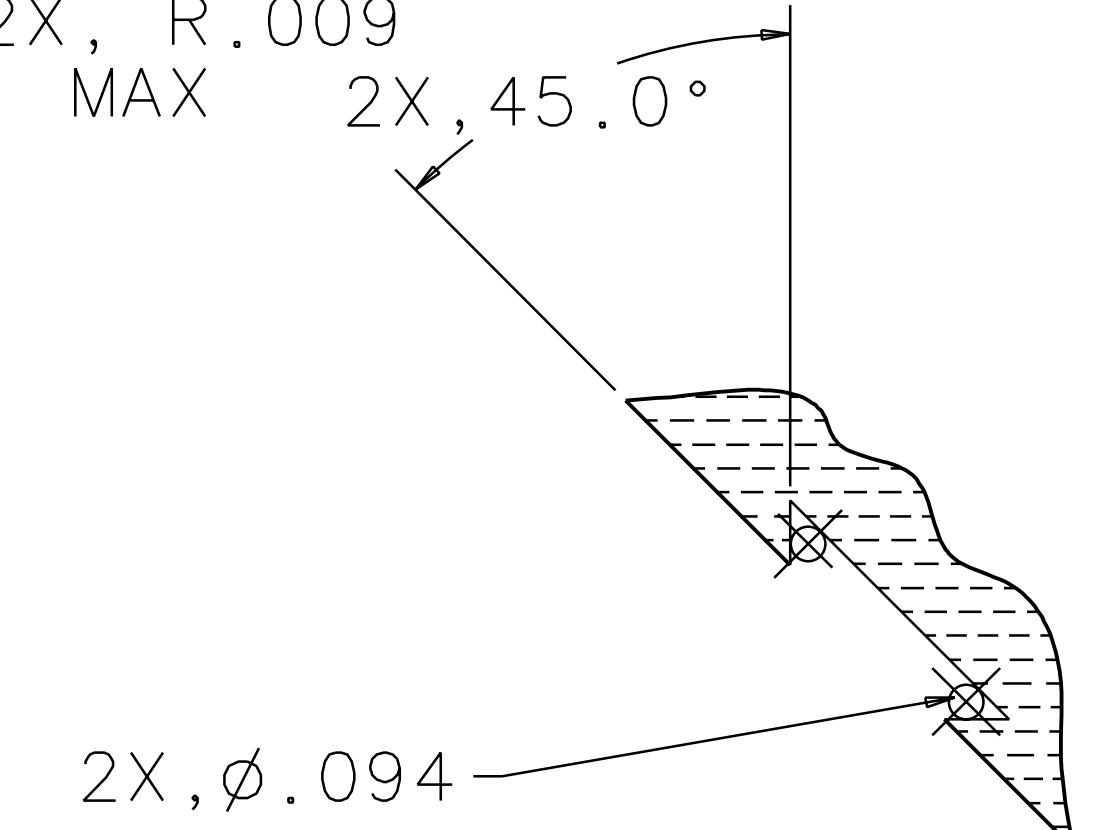
RIGHT BLOCK, TOP  
MATERIAL: TEFLON



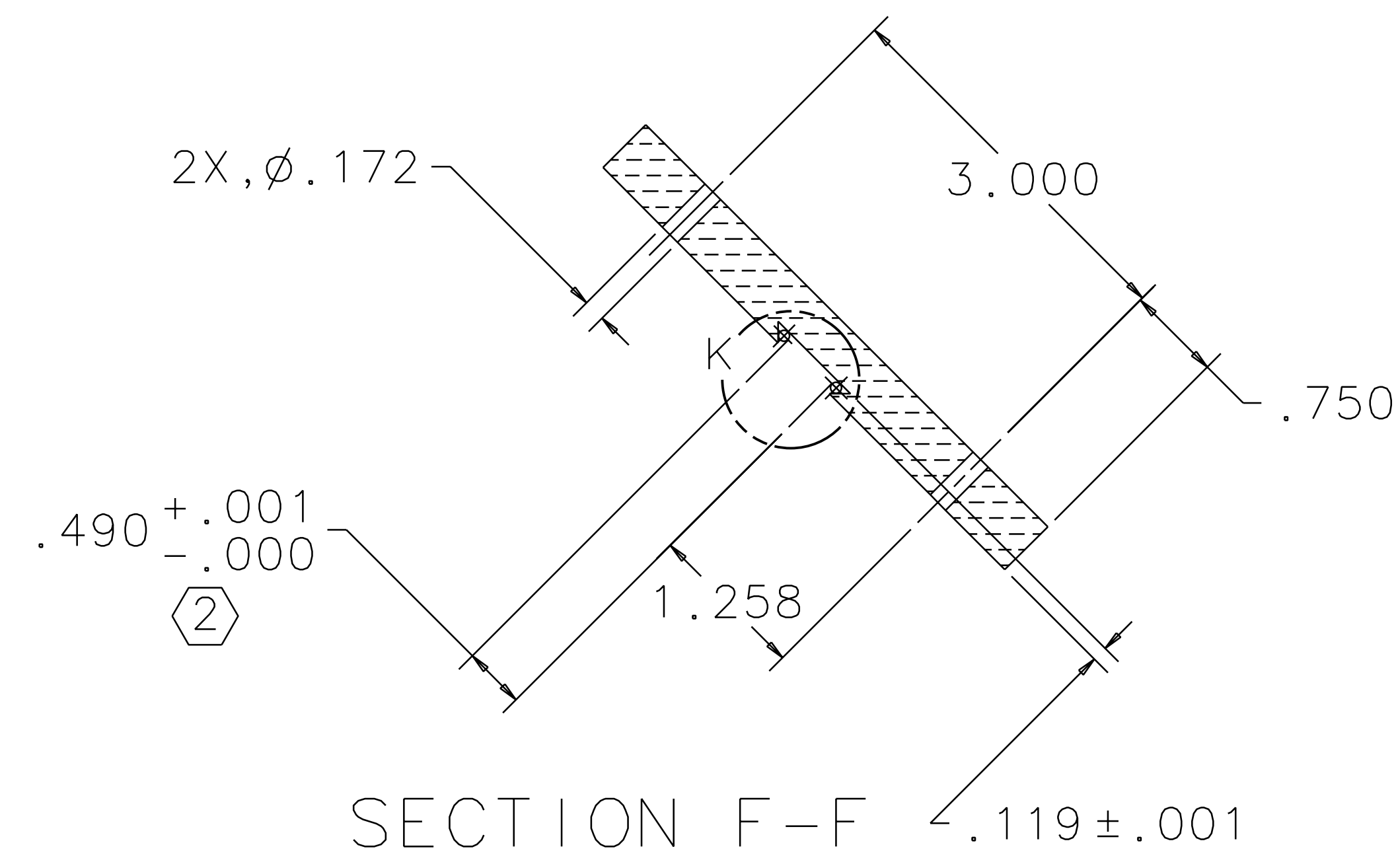
VIEW H  
SCALE 4:1



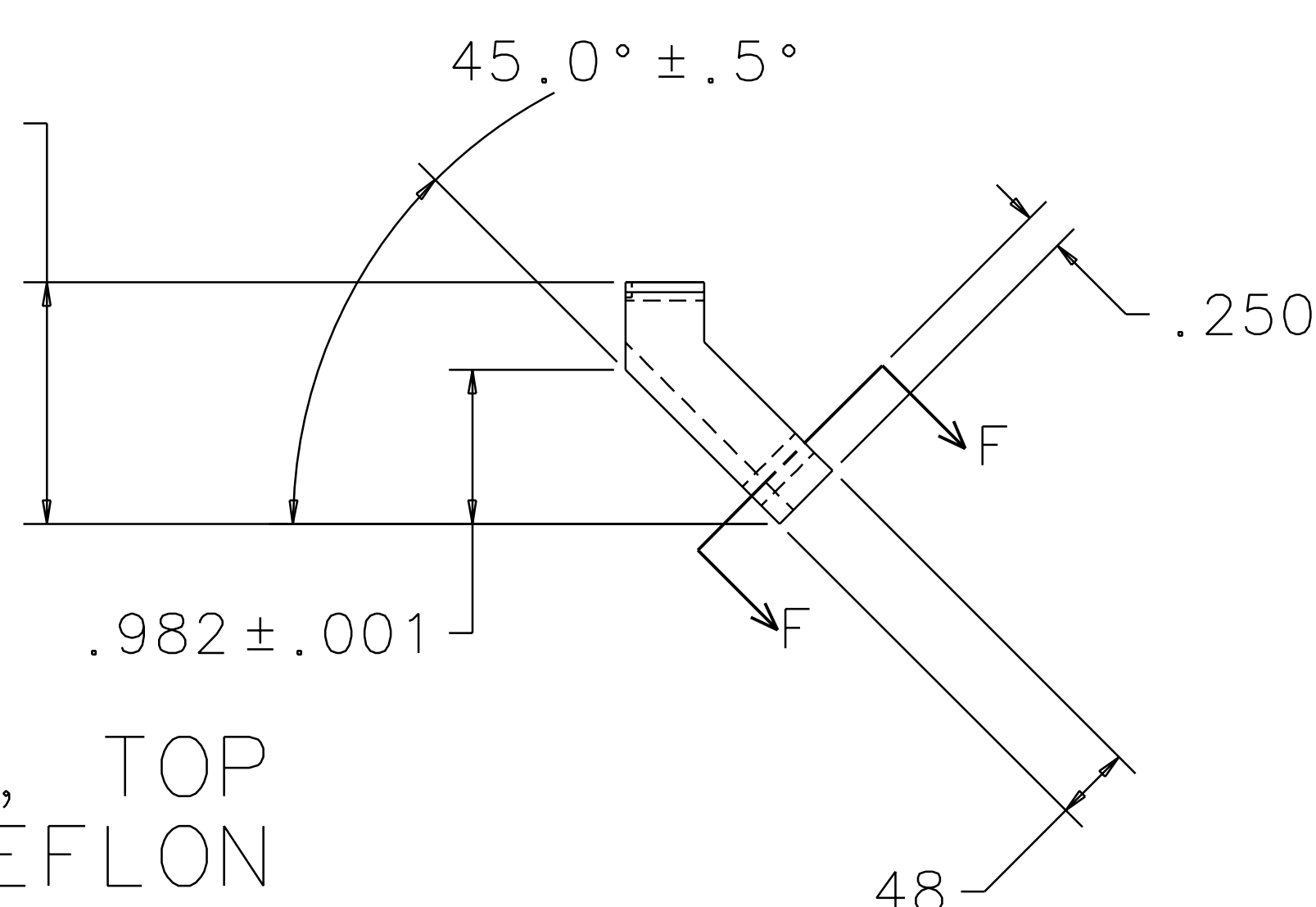
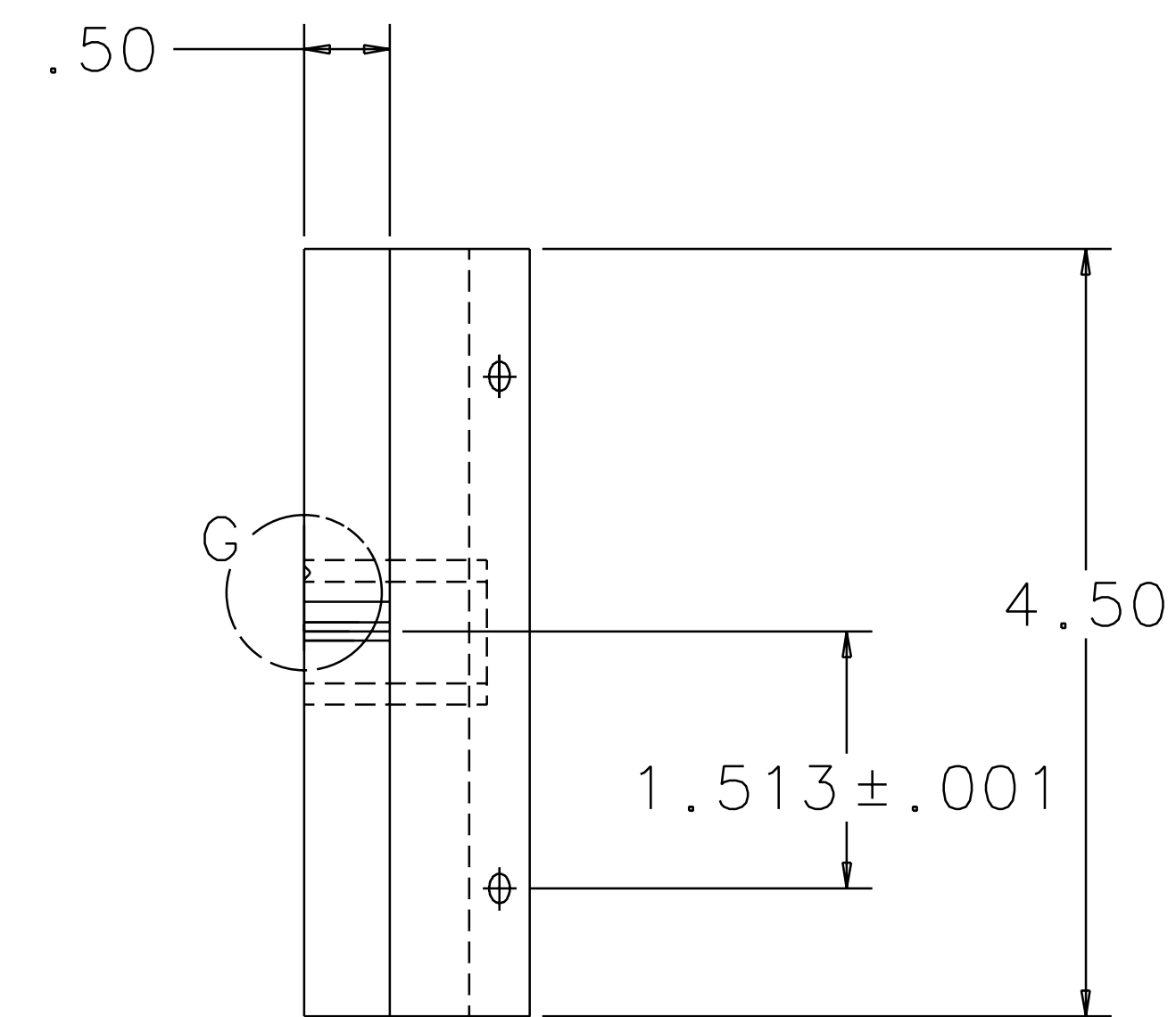
VIEW G  
SCALE 4:1



VIEW K  
SCALE 2:1



SECTION F-F



QTY REQ	PART OR IDENTIFYING NO	NOMENCLATURE OR DESCRIPTION	MATERIAL SPECIFICATION	ITEM NO.
		GUIDE ROD FIXTURE ITM, 4k (LOS1b)		

APPROVALS	DATE	TITLE
J. Romie	8/98	GUIDE ROD FIXTURE ITM, 4k (LOS1b)

UNLESS OTHERWISE SPECIFIED DIMENSIONS ARE IN INCHES	FRACCTIONS	DECIMALS	ANGLES
0. XX ± 0.01			
0. XXX ± 0.005			
ANGLES ± 0.5°			

DO NOT SCALE DRAWING

FILE LOCATION	FINISH	SCALE	SHEET
		1/1	3 OF 3