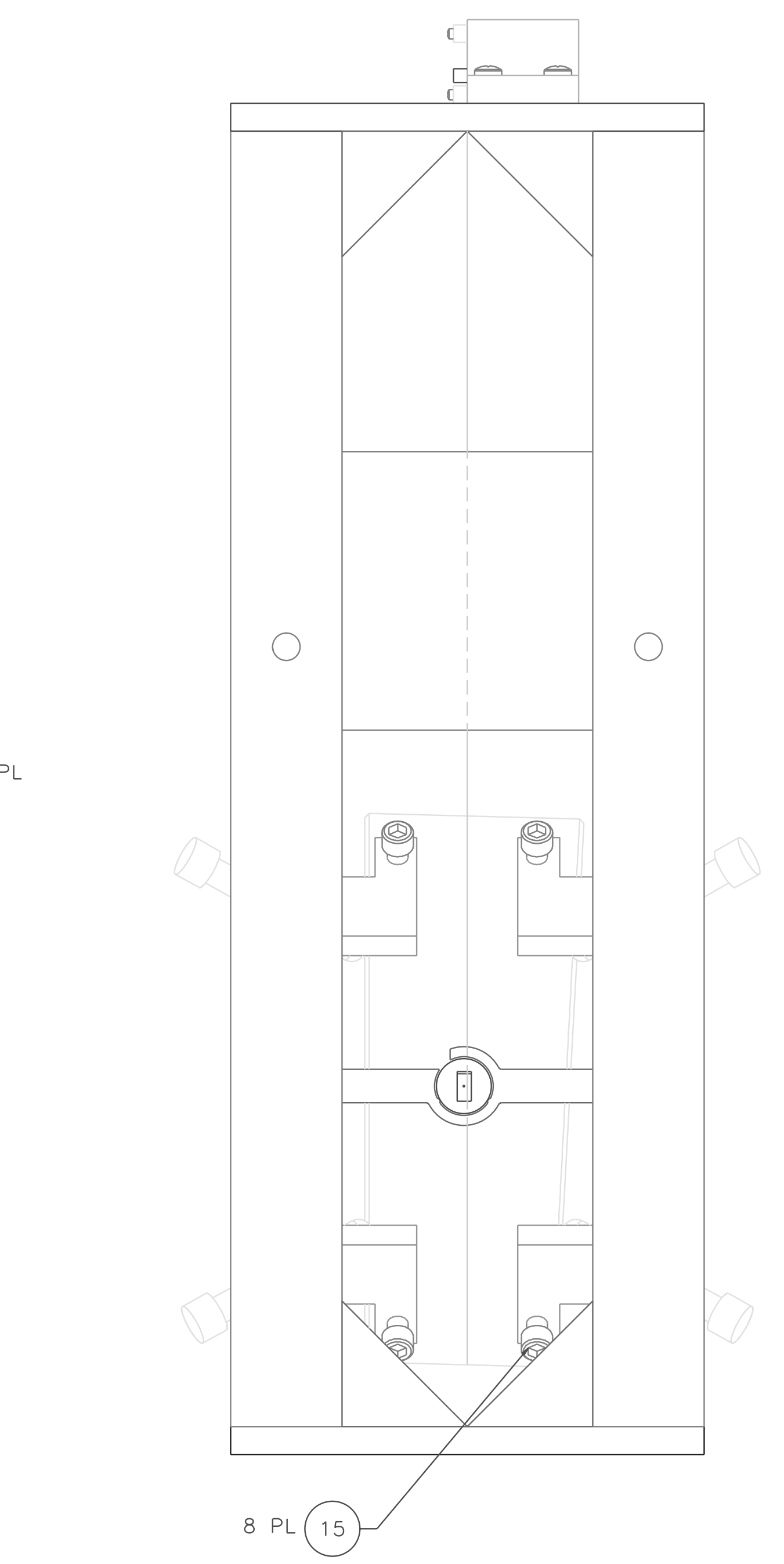
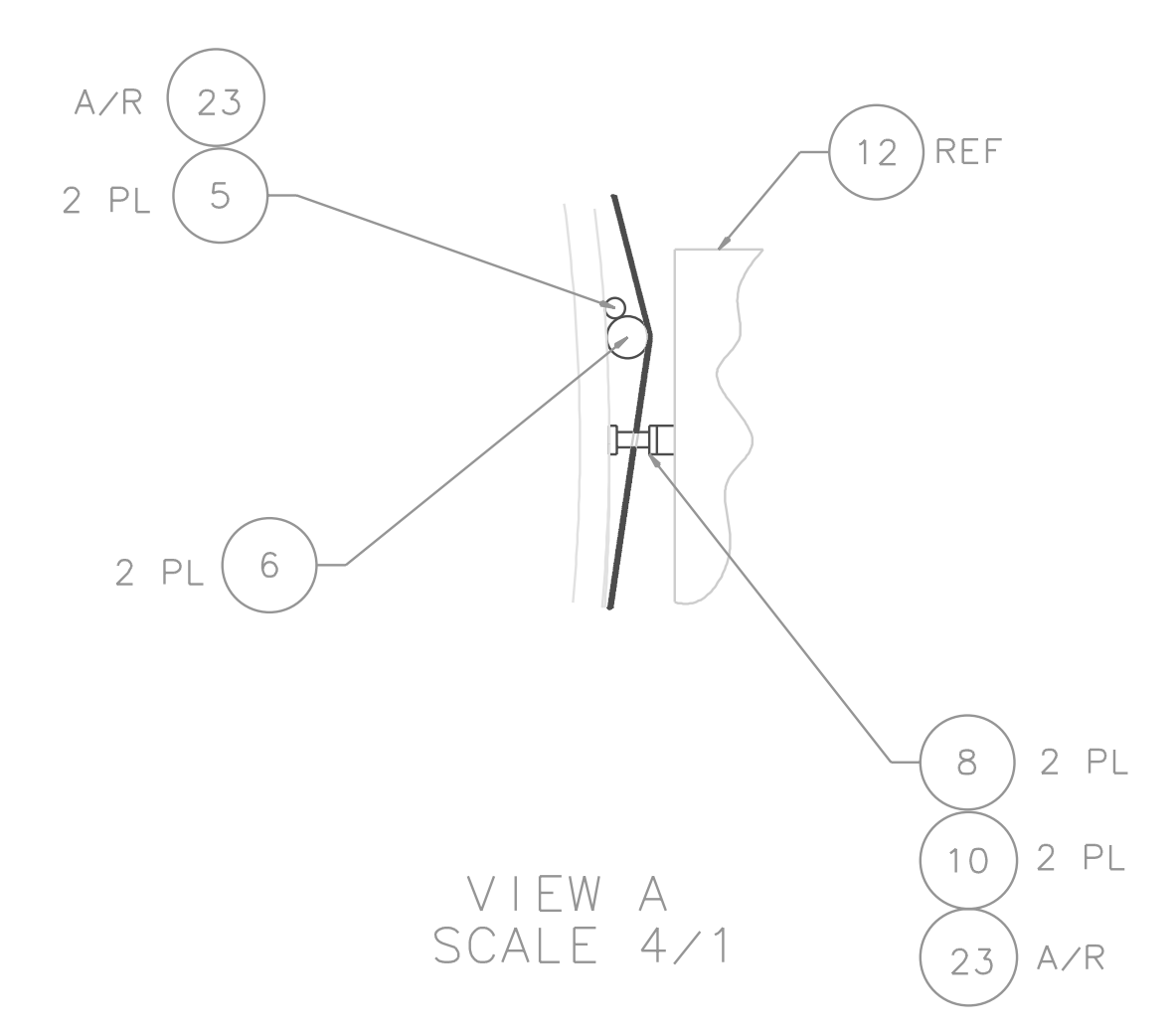
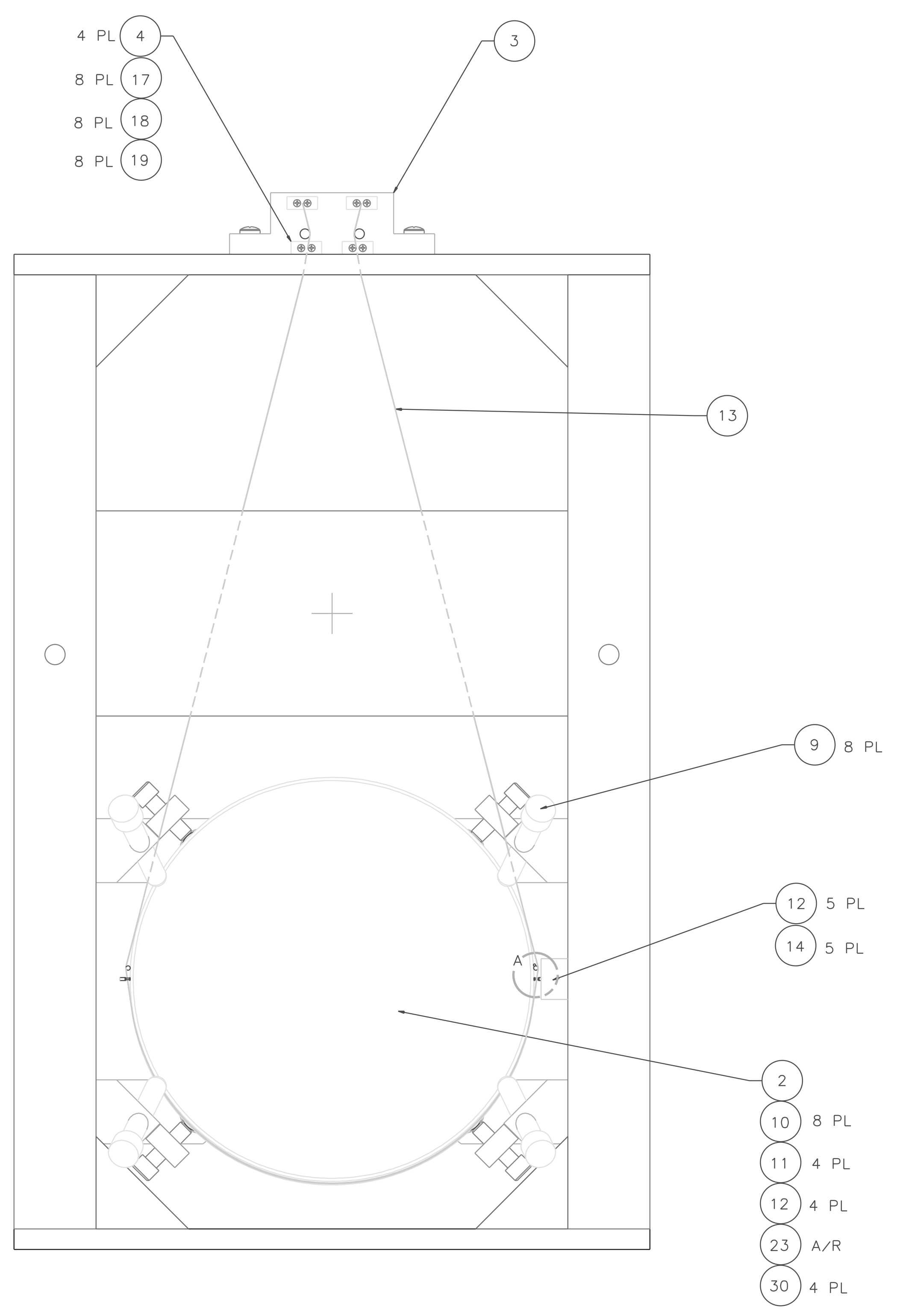
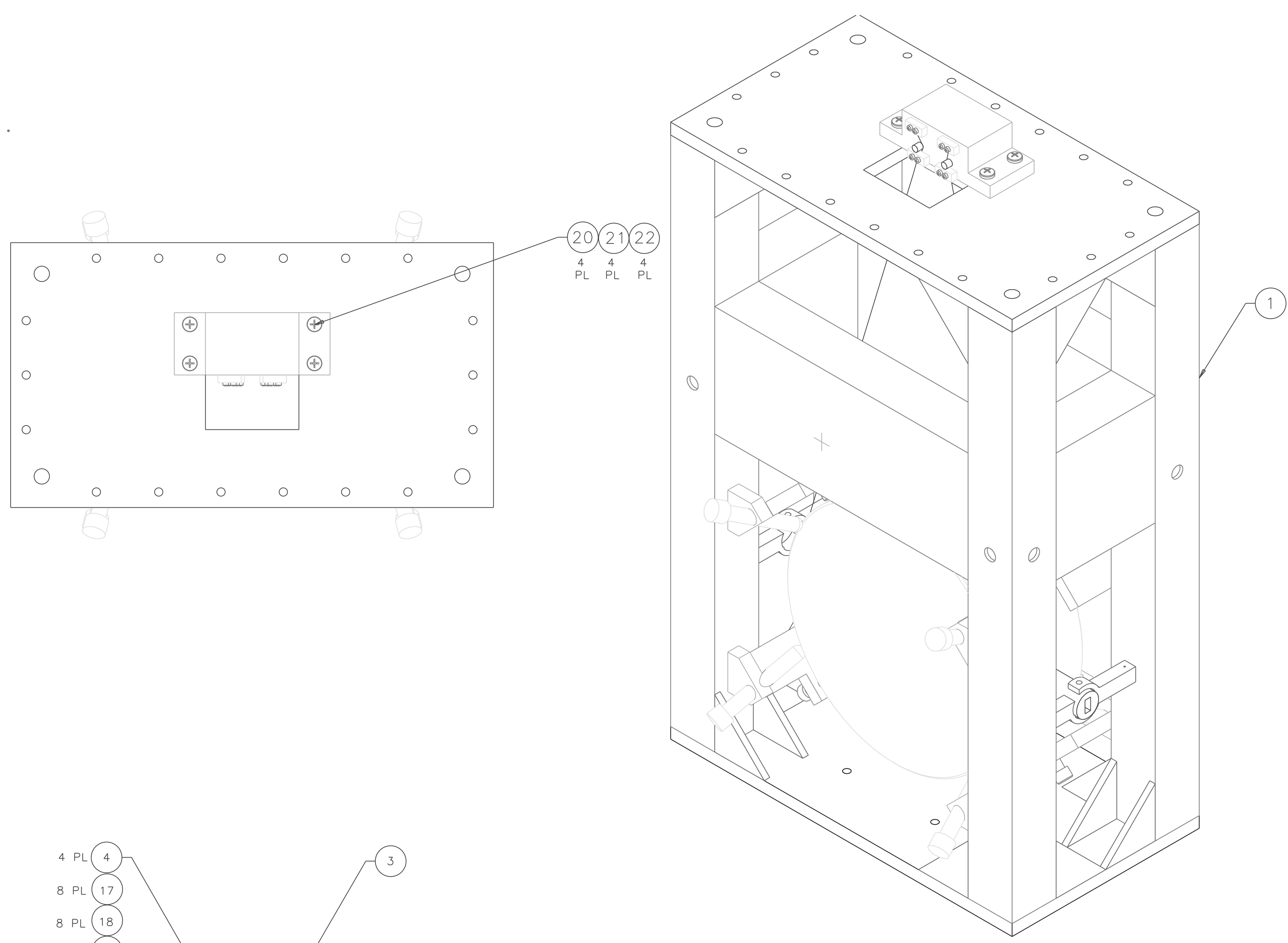


NOTES: (UNLESS OTHERWISE SPECIFIED)
 1. SPECIFICATIONS FOR THE CONSTRUCTION OF THIS ASSEMBLY ARE COVERED IN THE LARGE OPTIC SUSPENSION BALANCING SPECIFICATION, LIGO E970154. HEIGHT ADAPTER IS NOT SHOWN FOR CLARITY. IT IS BOLTED TO THE BOTTOM OF THE LOS STRUCTURE ASSEMBLY USING THE HARDWARE ITEM NOS. 25-28. INSTRUCTIONS INCLUDED IN LIGO E970154.

| REV | DATE | DRAWN BY | CHECKED | DCC | DCN/DESCRIPTION |
|-----|---------|----------|---------|-----------|-------------------------|
| A | 4/8/98 | J. Hazel | | L. Turner | E980077/INITIAL RELEASE |
| B | 4/27/01 | J. Romie | | | E010077/INCRP. REV A1 |



| QTY | PART OR IDENTIFYING NO. | DESCRIPTION | MATERIAL SPECIFICATION | ITEM NO. |
|-----|------------------------------|---|------------------------|----------|
| | | | | 41 |
| | | | | 40 |
| | | | | 39 |
| | D990188 | SIDE BLOCKS, RM | | 38 |
| | D970180 | WINCH FIXTURE | | 37 |
| | D960753 | FIXTURE, WIRE AND OPTICS | | 36 |
| | D970568 | FIXTURE, GUIDE ROD, RM, 2K | | 35 |
| | D990159 | FIXTURE, MAGNET/STAND, GLUING | | 34 |
| | D970169 | MAGNET STRENGTH FIXTURE | | 33 |
| | D970616 | COIL STRENGTH FIXTURE | | 32 |
| | | | | 31 |
| | D970615 | PAM SCREW | | 30 |
| | | | | 29 |
| 18 | | 1/4-20 x 1.5 LG SHCS | STAINLESS | 28 |
| 18 | | 1/4-20 LOCK WASHER | STAINLESS | 27 |
| 18 | | 1/4-20 FLAT WASHER | STAINLESS | 26 |
| 18 | U-C COMPONENTS P/N N-2520-A | 1/4-20 HEX NUT | STAINLESS, Ag PLTD | 25 |
| 1 | D970579 | HEIGHT ADAPTER, RM, 2K | (2) | 24 |
| A/R | | EPOXY, VAC-SEAL | | 23 |
| 4 | COMMERCIAL EQUIV NAS620416L | WASHER, FLAT, #1/4 | STAINLESS | 22 |
| 4 | COMMERCIAL EQUIV MS35338-139 | WASHER, SPLIT LOCK, #1/4 | STAINLESS | 21 |
| 4 | U-C COMPONENTS P/N C-2016-NA | SCREW, SHCS, 1/4-20 x 1.00 | STAINLESS, Ag PLTD | 20 |
| 8 | COMMERCIAL EQUIV NAS620C4L | WASHER, FLAT, #4 | STAINLESS | 19 |
| 8 | COMMERCIAL EQUIV MS35338-135 | WASHER, SPLIT LOCK, #4 | STAINLESS | 18 |
| 8 | U-C COMPONENTS P/N C-408-NA | SCREW, SHCS, 4-40 x .50 | STAINLESS, Ag PLTD | 17 |
| | | | | 16 |
| 8 | D990690 | LOS SAFETY STOP | | 15 |
| 6 | U-C COMPONENTS P/N T-1003-NA | SET SCREW, SOCKET, 10-32 x .188 | STAINLESS, Ag PLTD | 14 |
| A/R | | WIRE, ϕ .0120 \pm -.0003* | MUSIC WIRE | 13 |
| 5 | D960138 | SENSOR/ACTUATOR HEAD ASSEMBLY | | 12 |
| 4 | D970075 | DUMBBELL STANDOFF | | 11 |
| 10 | D960501 | MAGNET | | 10 |
| 8 | D960499 | LOS CHAMFER STOP | | 9 |
| 2 | D970567 | RECYCLING MIRROR SIDE STANDOFF | | 8 |
| | | | | 7 |
| 2 | D970565 | RECYCLING MIRROR WIRE STANDOFF | | 6 |
| 1 | D970566 | RECYCLING MIRROR GUIDE ROD | | 5 |
| 4 | D960134 | LOS CLAMP, SUSPENSION BLOCK | | 4 |
| 1 | D960144 | LOS SUSPENSION BLOCK | | 3 |
| 1 | COATING SPEC E980070 | OPTIC, ϕ 25cm x 10cm THICK | RECYCLING MIRROR, 2K | 2 |
| 1 | D970551 | RECYCLING MIRROR LOS STRUCTURE ASSEMBLY | | 1 |

UNLESS OTHERWISE SPECIFIED DIMENSIONS ARE IN INCHES TOLERANCES ARE: FRACTIONS DECIMALS ANGLES

APPROVALS: J. Hazel, DATE: 5/96

TITLE: LARGE OPTIC SUSPENSION ASSEMBLY (LOS1e) FOR RECYCLING MIRROR, 2K (RM, 2K)

SIZE: E, SCALE: 1/2

FILE LOCATION: home/dcc/docs/0970577.pdf

REVISION: REV B, SHEET 1 OF 1