

NOTES:
 1. ALL PIPING BEFORE STERILE FILTER IS SCH 40 GALV STEEL.
 2. SEE COMPRESSOR AND COMPONENT DRAWINGS FOR ELECTRICAL AND ADDITIONAL INFORMATION.
 3. APPROXIMATE WEIGHT: 5500 LBS.

PROCESS SYSTEMS INTERNATIONAL DOCUMENT APPROVAL CHECKLIST

PROJECT NAME: *Rev 1*
 PSI DOC. NO.: *049-8-298*

NOTE: THIS REVIEW DOES NOT RELEASE THE SELLER OR CONTRACTOR OF ANY OBLIGATIONS UNDER THE P.O. OR CONTRACT.

FA = FINAL APPROVAL
 AS = APPROVED AS NOTED - REVISE & RESUBMIT
 AF = APPROVED FOR FABRICATION
 NA = NOT APPROVED
 RP = RELEASED FOR PROCUREMENT OF MATERIALS ONLY

BY: *Paul Bayly* DATE: *8/13/97*

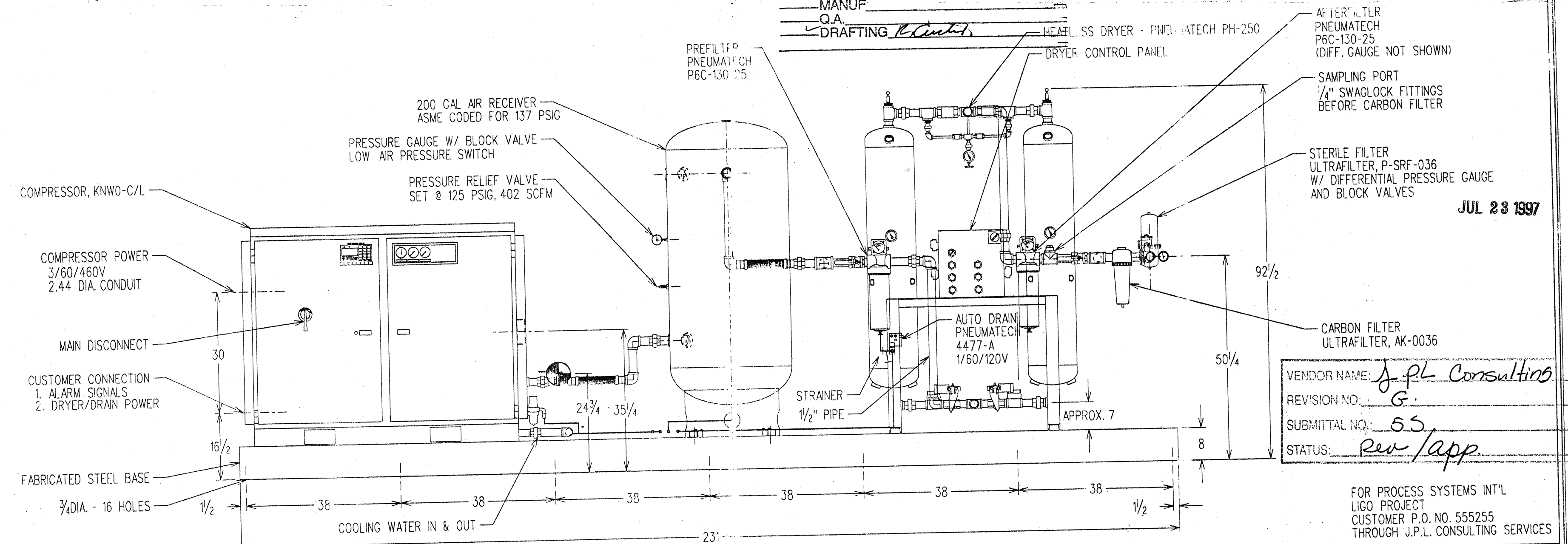
PROCESS SYSTEMS INTERNATIONAL DOCUMENT REVIEW CHECKLIST

PROJECT NAME: _____
 PSI DOC. NO. _____

CHK	BY / DATE
PROJECT ENG	<i>SM 8/11/97</i>
MECHANICAL	
STRESS	
ELECTRICAL	
PROCESS	
MFG. ENG.	
MANUF.	
Q.A.	
DRAFTING	<i>R. Smith</i>

DRAIN SCHEDULE

A- PULSATION WHEN COMPRESSOR LOADS
 B- PULSATION WHEN COMPRESSOR UNLOADS
 C- MANUAL DRAIN
 D- TIMED DRAIN
 NOTE: SUGGEST PIPING DRAINS TO OPEN TROUGH TO VERIFY CORRECT OPERATION.



AFTER FILTER PNEUMATECH P6C-130-25 (DIFF. GAUGE NOT SHOWN)
 SAMPLING PORT 1/4\" SWAGLOCK FITTINGS BEFORE CARBON FILTER
 STERILE FILTER ULTRAFILTER, P-SRF-036 W/ DIFFERENTIAL PRESSURE GAUGE AND BLOCK VALVES
 CARBON FILTER ULTRAFILTER, AK-0036

JUL 23 1997

VENDOR NAME: *J. P.L. Consulting*
 REVISION NO.: *G*
 SUBMITTAL NO.: *55*
 STATUS: *Rev/app*

⊙ DENOTES LOCATION OF CENTER OF GRAVITY

G	11 JUL 97	ETI	CORRECTED PER CUSTOMER COMMENTS	DRAWN	T. DUGAN	4/25/96
F	24 JUN 97	ETI	CORRECTED BYPASS AND FILTER LOCATION	CHECKED		
E	27 MAY 97	ETI	NOTE TO 2\" MUFFLER PER CUSTOMER COMMENTS	SHEET		SCALE NONE
LTR	DATE	BY	CHANGE	JOB NO.	96G0246, 96G0247	

Rogers Machinery Co, Inc
 Central Engineering
 Portland, Oregon, 97224

COMPRESSED AIR SKID
 KNWO COMPRESSOR
 DRYER, 200 GAL VERT TANK
 & FILTERS

DRAWING NUMBER
KAC-1841-G